

Green Leaf Lab®

12025 NE Marx St. Portland, OR 97220
503-253-3511 / www.greenleafabs.com
License#: 10029074C70

Quality Control Testing Official Report

Bubba Kush 8

Sample ID: G4B0076-04

Matrix: Industrial Hemp

Test ID: 5025748

Source ID:

Date Sampled: 02/06/24

Date Accepted: 02/06/24

Harvest/Prod. Date: 02.05.2024

Potency Analysis

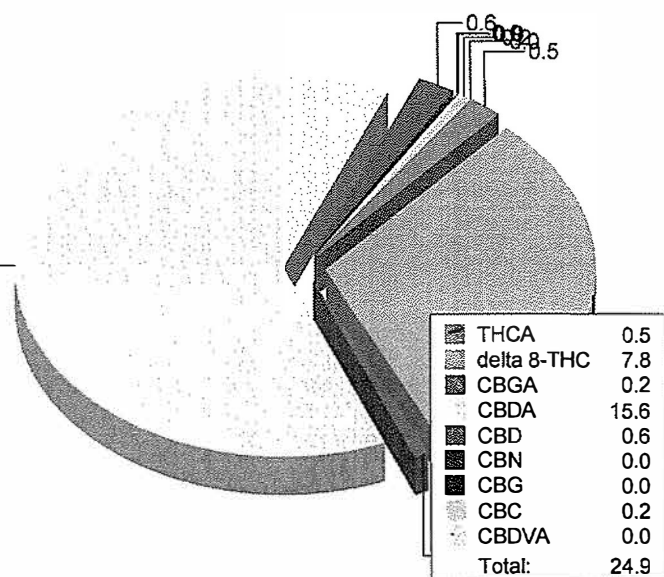
Date/Time Extracted: 02/07/24 09:15

Analysis Method/SOP: 215

Batch Identification: 2406025

Cannabinoids	LOQ (%)	% by Wt.	mg/g
Total THC	0.009080	0.3955	3.955
Total CBD	0.008300	14.24	142.4
Total CBG	7.900E-4	0.1947	1.947
THCA	5.000E-4	0.2509	2.509
delta 9-THC	5.000E-4	< LOQ	< LOQ
delta 8-THC	0.01796	7.823	78.23
THCV	0.005055	< LOQ	< LOQ
THCVA	0.001885	< LOQ	< LOQ
CBD	0.002000	0.5769	5.769
CBDA	0.002000	15.58	155.8
CBDV	0.005000	< LOQ	< LOQ
CBDVA	0.001640	0.03181	0.3181
CBN	0.002990	0.02892	0.2892
CBG	7.900E-4	0.02437	0.2437
CBGA	7.900E-4	0.1940	1.94
CBC	0.008965	0.1618	1.618

Cannabinoids Profile



Total THC = delta 9-THC + (THCA * 0.277)

Total CBD = CBD + (CBDA * 0.877)

Total CBG = CBG + (CBGA * 0.878)

LOQ=Limit of Quantification, the lowest measurable concentration of an analyte.

THCA, delta 9-THC, delta 8-THC, CBDA and CBD are accredited by TNI 2016 and ISO 17025



ISO 17025
ACCREDITED
LABORATORY

Patrick Hermonson
Quality Officer - 2/16/2024

These results relate only to the sample included on this report. The report may not be reproduced except in full, without the written permission of Green Leaf Lab.

This is for informational testing and is not compliance testing. Lab results apply to the sample as received.