

Turns DOMESTIC WASTE WATER into REUSABLE WATER

Germany's first certified small scale waste water treatment with membrane bioreactor technology

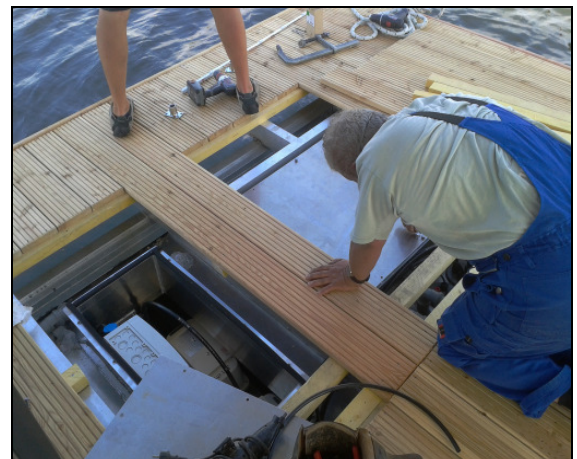


Reference spezial applications

Type	BUSSEMF type MF-SKA 4	
Location	Private floating home Kröslin	
Commissioning	2012	
Size of plant (population equivalent)	[p. E.]	4
Required Space	[m x m]	Integrated in the floating body
Additional requirements	Filtrate can be discharged directly into the surrounding water	
Reuse of water		



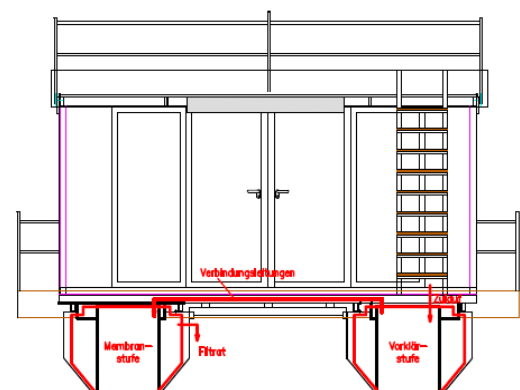
Exterior view of the floating home at the marina Kröslin



Tank 1: Septic tank with additional space for equipment in the starboard-floating body



Tank 2: Membrane stage in the portside-floating body



Schema of the procedure