

Turns DOMESTIC WASTE WATER into REUSABLE WATER

Germany's first certified small scale waste water treatment with membrane bioreactor technology

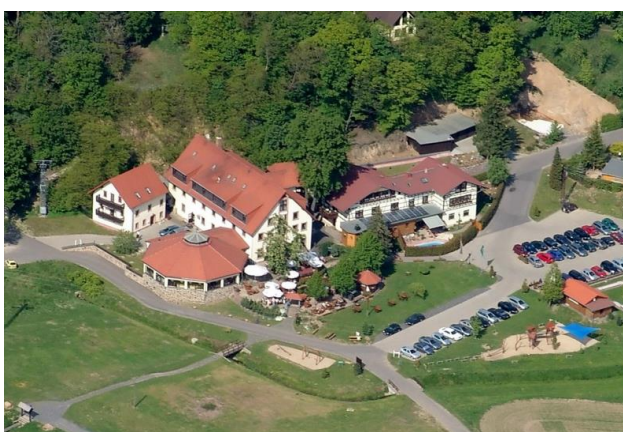


Reference special applications

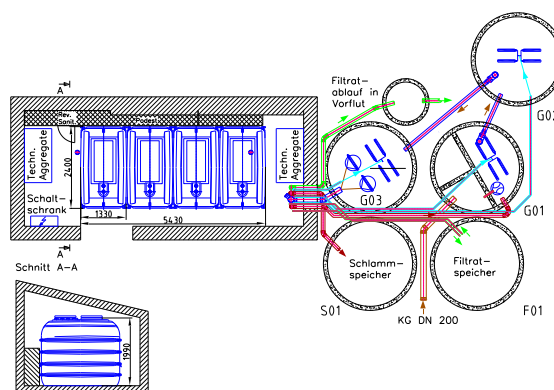
| | | |
|---------------------------------------|---|---|
| Type | BUSSEMF Type MF 200 | |
| Location | Hotel „Zur Schiffsmühle“ Grimma/Höfgen | |
| Commissioning | 2012 | |
| Size of plant (population equivalent) | [p. e.] | 200 p. e./ 30 rooms, 1 suite, 2 holiday apartments, restaurants, conference space |
| Required space | [m x m x m] | 6,50 m x 3,00 m x 3,00 m |
| Additional requirements | - | |
| Reuse of water | Flushing of toilets, irrigation | |



4 MBR tanks each with 5000 liters of volume installed in the technical room of the hotel



Aerial view of the hotel and restaurant „Zur Schiffsmühle“



Floor plan of the BUSSE-MF system on site