

MID-COLUMBIA MASTERSINGERS

2019-2020 SEASON

American Dreamers

Friday, January 10, 7:30pm
St. Patrick Catholic Church, Pasco

Saturday, January 11, 7:30pm
St. Joseph Catholic Church, Kennewick

Sunday, January 12, 4:00pm
St. Joseph Catholic Church, Sunnyside



*Presented in partnership with the
Tri-Cities Immigrant Coalition and
supported in part by the Washington
State Arts Commission, the National
Endowment for the Arts and the
Washington Chapter of the American
Choral Directors Association*

www.mcmastersingers.org

CONCERT PROGRAM

Today's performance is being recorded. Please silence cell phones and watches.

The Star-Spangled Banner arranged by Emily Lau (b. 1984)

Love Your Neighbor Reginald Unterseher (b. 1956)
Jamie Goad, soprano

Light Beauty Peace Joan Szymko (b. 1957)

To Be Free arranged by Karen Siegel (b. 1980)

Two Immigrants Jenni Brandon (b. 1977)

The New Colossus Saunder Choi (b. 1988)

INTERMISSION

American DREAMers Melissa Dunphy (b. 1980)

Marlene Part 1
Talitha McCall, soprano

Dancing in Buses
Marlene Part 2
Matthew Monroe, tenor

More milk, more milk makes it better
Marlene Part 3
Reginald Unterseher, bass

#UndocuJoy
Marlene Part 4
Colleen Hatch, alto

#UnitedWeDream

Journey Home Abbie Betinis (b. 1980)
Sibyl Kaufman and Ted Miller, soloists

The Road Home adapted by Stephen Paulus (1949-2014)
Kelly Parks, soprano

AMERICAN
CHORAL
DIRECTORS
ASSOCIATION



This program is supported in part by the Washington State Arts Commission and the Washington Chapter of the American Choral Directors Association

THANK YOU TO **stcu** FOR SPONSORING
FREE TICKETS FOR K-12 STUDENTS THIS SEASON!

WWW.MCMASTERSINGERS.ORG

MID-COLUMBIA MASTERSINGERS

ARTISTIC DIRECTOR

Justin Raffa

CONDUCTING INTERN

Paris Rodgers

PIANO

Benjamin Walley

MCM CHAMBER CHOIR

SOPRANO

Jamie Goad
Molly Holleran
Sibyl Kaufman
Jennifer Lefler
Talitha McCall
Kelly Parks
Paris Rodgers

ALTO

Laurel Adams
Hannah Bonham
Clarissa Fraley
Terri Geluso
Colleen Hatch
Lisa Hill
Kirsten Sauey Hofmann

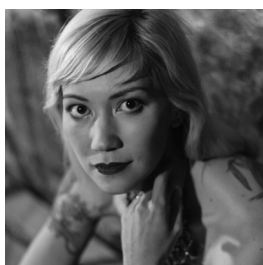
TENOR

Paul Davis
Tanya Knickerbocker
Greg Levy
Josh Lindberg
Ted Miller
Matthew Monroe
Matt Smith

BASS

Paul Klein
Jim Mailloux
Scott Rodgers
Greg Rose
Benjamin Stürmer
Reginald Unterseher
Alex Veysey
Weston Walker

MELISSA DUNPHY, COMPOSER



Born and raised in Australia, Melissa Dunphy moved to the United States in 2003 and has since become an award-winning and acclaimed composer specializing in political and theatrical music. She first came to national attention in 2009 when her large-scale choral work the *Gonzales Cantata*, written while still an undergraduate at West Chester University, was featured in The Wall Street Journal, The Atlantic, Harper's Magazine, National Review, Comedy Central, and on MSNBC's The Rachel Maddow Show. The *Gonzales Cantata* was subsequently staged by the American Opera Theater and played a sold-out run in Baltimore. Word of the *Gonzales Cantata* has since spread internationally, including to Croatian President Ivo Josipović, who played excerpts in a speech he gave at Yale University on politics and music in September 2014.

Dunphy's first song cycle *Tesla's Pigeon*, has been recognized with a Spirit of Tesla award by the Tesla Science Foundation, first place in the 2012 National Association of Teachers of Singing Art Song Composition Award, the American Prize, and inclusion in the Chicago Ensemble Discover America VIII. Her choral work *What do you think I fought for at Omaha Beach?* won the Simon Carrington Chamber Singers Composition Competition and has been performed around the country by ensembles including GRAMMY Award-winning Chanticleer, Cantus, and the St. Louis Chamber Chorus, who recorded it for their album *American Declarations*. Dunphy has also received awards from ASCAP, the Lotte Lehmann Foundation, Boston Metro Opera, Boston Choral Ensemble, and the Secret Opera, and commissions include pieces for Ensemble Epomeo, Choral Arts Philadelphia, Opus Anglicanum (UK), mezzo-soprano Maren Montelbano, harpist Shana Norton, Voice of this Generation, the Kennett Symphony Children's Choir, Piedmont Children's Choir, and Whitman College Chamber Singers.

Dunphy has been the composer-in-residence for the Immaculata Symphony Orchestra (2010), the Volti Choral Arts Lab (2013-2014), and the Volti Choral Institute (2016), and is currently the composer-in-residence of the Saint Louis Chamber Chorus (2015-2017). In addition to her concert and choral music, she composes frequently for Philadelphia-area theatres such as People's Light, the Philadelphia Shakespeare Theatre, and Gas and Electric Arts, and since 2014 has been the music director for the Eugene O'Neill Theater Center National Puppetry Conference.

Dunphy has completed doctoral studies in composition at the University of Pennsylvania, where she was a Benjamin Franklin Fellow; her dissertation in progress is an opera about the sex life of author Ayn Rand. Her teachers have included Robert Maggio, Larry Nelson, Van Stiefel, James Primosch, Jay Reise and Anna Weesner. Dunphy lives with her husband, Matt, for whom she occasionally creates internet-famous Halloween costumes, and three cats; the Dunphys are currently the owners and developers of the Hannah Callowhill Stage, a new performance venue in Old City Philadelphia which they hope to open in 2017. In 2010, Dunphy achieved notoriety after appearing on Fox & Friends [Fox News] for playing the piano while upside down. She is also an accomplished actor, recognized in Philadelphia as "unquestionably the city's leading Shakespeare ingénue," [Philadelphia Inquirer]; in 2014, her solo performance in the Robin Malan play *iHamlet* earned her a Falstaff Award nomination from PlayShakespeare, and in 2015 she appeared as Puck in Philadelphia Shakespeare Theatre's *A Midsummer Night's Dream* and played solo amplified viola in the Opera Philadelphia new commission *ANDY: A Popera*. She also plays viola occasionally with the Delaware County Symphony and Penn Symphony Orchestra, and electric mandolin and mandola in the rock band Up Your Cherry. www.melissadunphy.com



MID-COLUMBIA MASTERSINGERS

Transforming lives through the power of choral music

BOARD OF DIRECTORS

Jeremiah Griffith, President
 Ellen Kathren, Vice-President
 Jamie Goad, Treasurer
 Stephen Miller, Secretary
 Ana Armijo
 Lucinda Borneman
 Janet Diediker
 Joe Francik
 Marisha Hamm
 Candice Jones
 Miriam Kerzner
 Kerry Lorenzo
 Scott Rodgers
 Tom Sackett

STAFF

ARTISTIC DIRECTOR Justin Raffa
 MANAGING DIRECTOR Wendy Veysey
 ASSOCIATE CONDUCTOR Reginald Unterseher
 ACCOMPANIST Benjamin Walley
 CONDUCTING INTERN Paris Rodgers
 MY CHOIR DIRECTORS JoLyn Glenn
 Kurtis McFadden
 Marianne Larsen
 Scott Wagnon
 MY CHOIR CONDUCTING INTERN Laurie Evans
 MY CHOIR ADMINISTRATOR Emily James
 MY CHOIR ACCOMPANISTS Josh Lindberg
 Adrienne Shields

ADDRESS

1177 Jadwin Ave, Ste 110
 Richland WA 99352

OFFICE HOURS

Monday-Thursday 9am-noon

CONTACT INFORMATION

509-460-1766
 info@MCMastersingers.org
 www.MCMastersingers.org



FRIDAY, JANUARY 17

6:30-9:00PM

MOONSHOT BREWING
 8804 W Victoria Ave, Kennewick

Sage Massage

Connie DeHaan, RN, LMP

*Massage therapist of choice of the MCM Artistic Director and
 visiting guest artists*



8797 Gage Blvd, Suite A
 Kennewick WA 99336
 509-531-8151
 cjdehaan54@gmail.com

The Trophy Shoppe Recognition Awards & Engraving

PLAQUES - TROPHIES
 ACRYLIC & GLASS AWARDS
 RUBBER STAMPS - NAME TAGS
 MISC. ENGRAVING

3180-P W. CLEARWATER AVE.
 KENNEWICK, WA 99336
 PHONE & FAX 509-735-3951
 EMAIL - jbawards300@gmail.com

Ethos

BAKERY & CAFE

Espresso Bar • Pastries & Breads • Café Menu
*Home of the Ethos Burger, as seen on
 Diners, Drive-ins, and Dives on Food Network!*

2150 Keene Rd.
 Richland, WA, 99352

ask@ethosbakery.net
 509.942.8417