



ARDOT: Monthly Updates and Insights

December 2024



ARDOT Secures \$1 Million Grant for Enhanced Roadway Safety Through Innovative Debris Removal Tech

The Arkansas Department of Transportation (ARDOT) has been awarded a \$1 million grant from the U.S. Department of Transportation's Accelerated Innovation Deployment Demonstration Program.

ARDOT will use this grant funding to purchase additional Lane Blade devices – vehicle attachments that aid in safe and efficient debris removal from the roadway.

[Read Full Article](#)



On the Front Lines: Influencing Construction Site Safety

No one has more influence on construction site safety than frontline supervisors, also known as foremen. Their impact on a project's overall success cannot be overstated—and that's particularly true for safety. But those responsibilities are a heavy burden given the dangers of working in our industry. In the last 16 years, more fatalities have occurred in construction than in any other industry.

[Read Full Article](#)

Construction Can Look to Gen Z and Technology to Sustain Talent Pipeline

You've heard it over and over: Gen Z is the solution to the labor shortage. But there may be another way to tap into that talent pipeline.

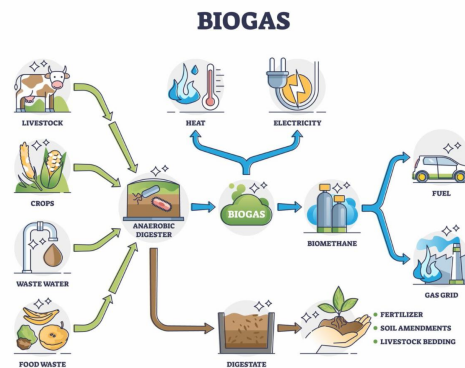
[Read Full Article](#)



Biogas and Renewable Energy: A Growing Opportunity for the Construction Industry

While wind and solar have dominated the renewable landscape, biogas offers unique benefits in addressing environmental concerns, particularly through its ability to repurpose waste into usable energy.

[Read Full Article](#)



*We are Here
to Help You!*



ABOUT CEI DBE SUPPORTIVE SERVICES

The goal of the DBE Supportive Services Program is to boost the presence of certified DBE contractors and consultants in ARDOT projects, increasing the dollar percentage allocated to DBEs.

Your support team!

Kasey Malone - Advisor

Val Smith - Marketing Specialist

Lyn Condon - Admin Support

Michelle Stauffer - Administrator

CONTINUE READING

**CEI DBE SUPPORTIVE
SERVICES**

SEND US A MESSAGE



CONNECT WITH US!