



**RBG technologies**

Knowledge Creates Unlimited Technologies - like primary colours



# My SQL Installation

www.rbgtechnologies.com

# How to install MySQL

MySQL is one of the most popular relational database management software that is widely used in today's industry. It provides multi-user access support with various storage engines. It is backed by Oracle Company. In this section, we are going to learn how we can download and install MySQL for beginners

## Prerequisites

The following requirements should be available in your system to work with MySQL:

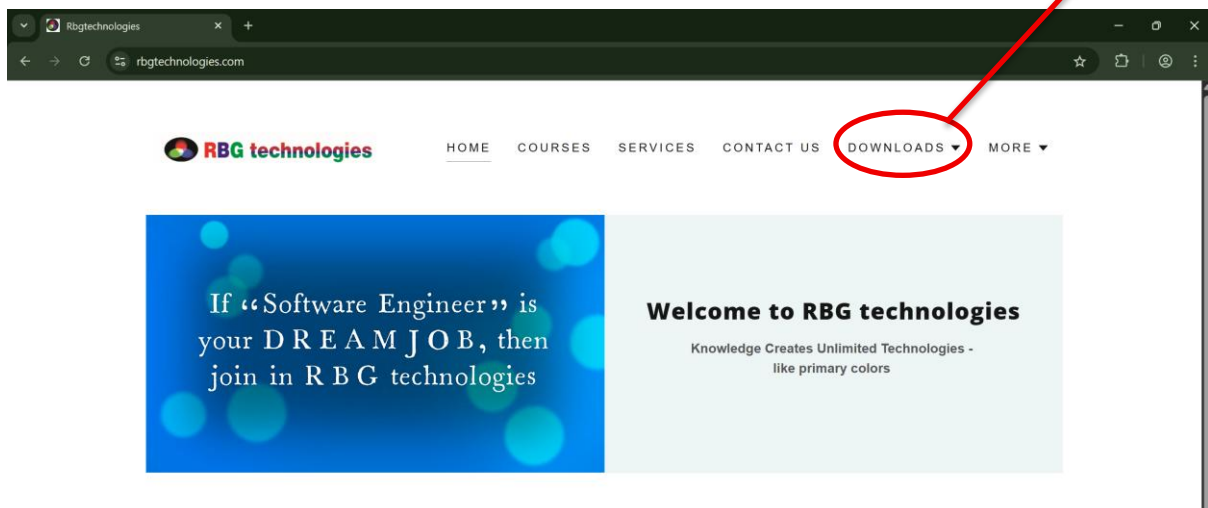
- **MySQL Setup Software**
- Microsoft .NET Framework 4.5.2
- Microsoft Visual C++ Redistributable for Visual Studio 2019
- RAM 4 GB (6 GB recommended)

## Download MySQL

Follow these steps:

**Step 1:** Go to the [official website](https://www.mysql.com/) of MySQL and download the community server edition software. Here, you will see the option to choose the Operating System, such as Windows or Go to our website : <https://rbgtechnologies.com/>

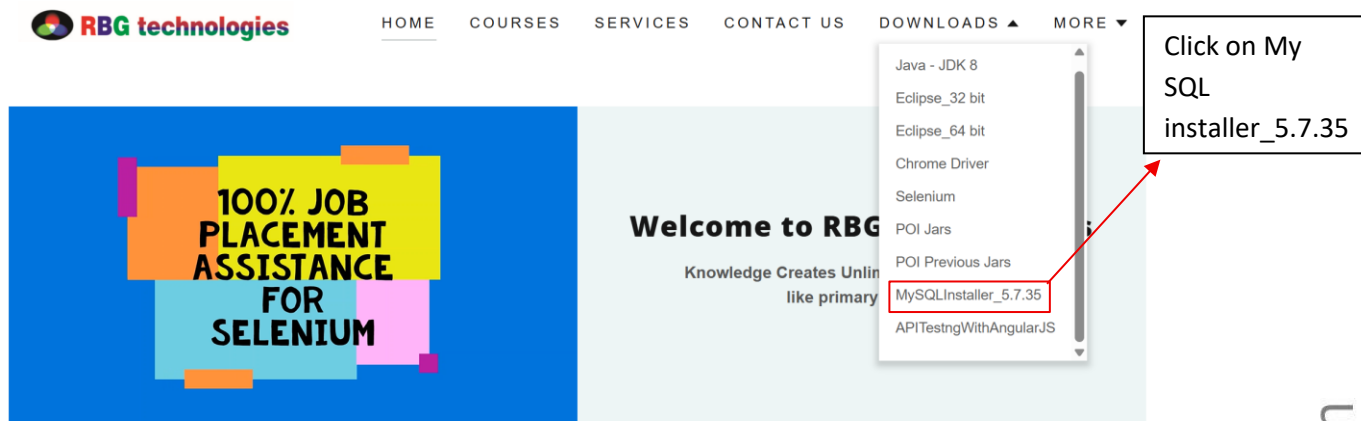
Click on Downloads



**Step 2 :** Next, there are two options available to download the setup. Choose the version number for the MySQL community server, which you want. If you have good internet connectivity, then choose my SQL-installer-web-community. Otherwise, choose the other one.

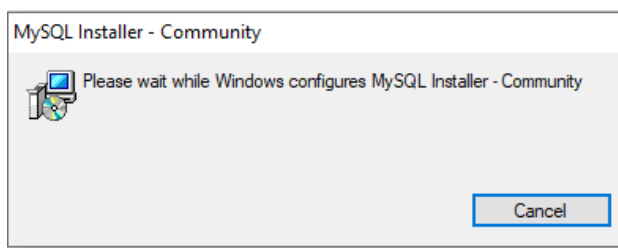
1.go to the dropdown Download

In the dropdown click on the MY SQL installer 5 7 35



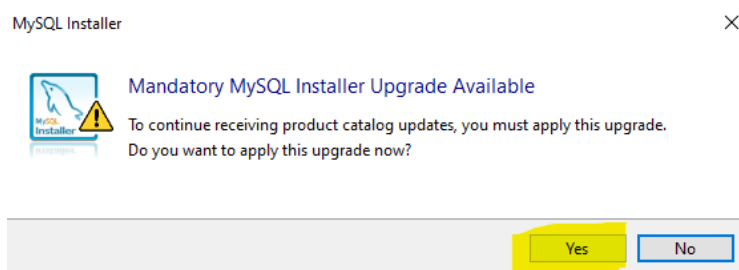
Double click on this msi file

2. After downloading the setup, double click the MSI **installer .exe file**. It will give the following screen:



After generator it will be give the Alert in the Alert click on the Yes

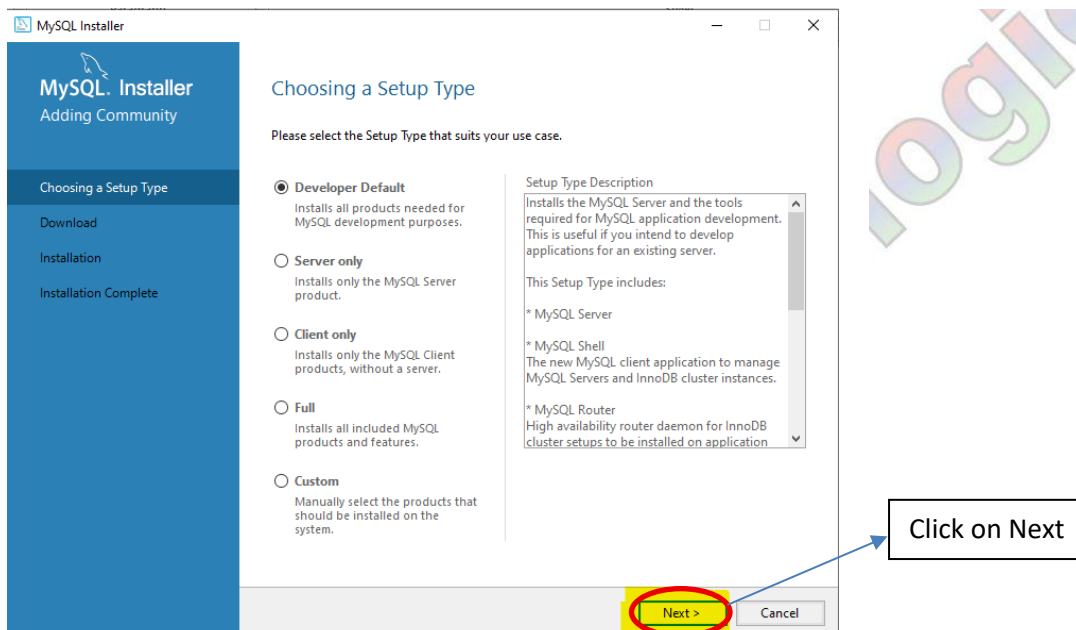
After click on the yes, it will give the Alert in the alert the click on the yes



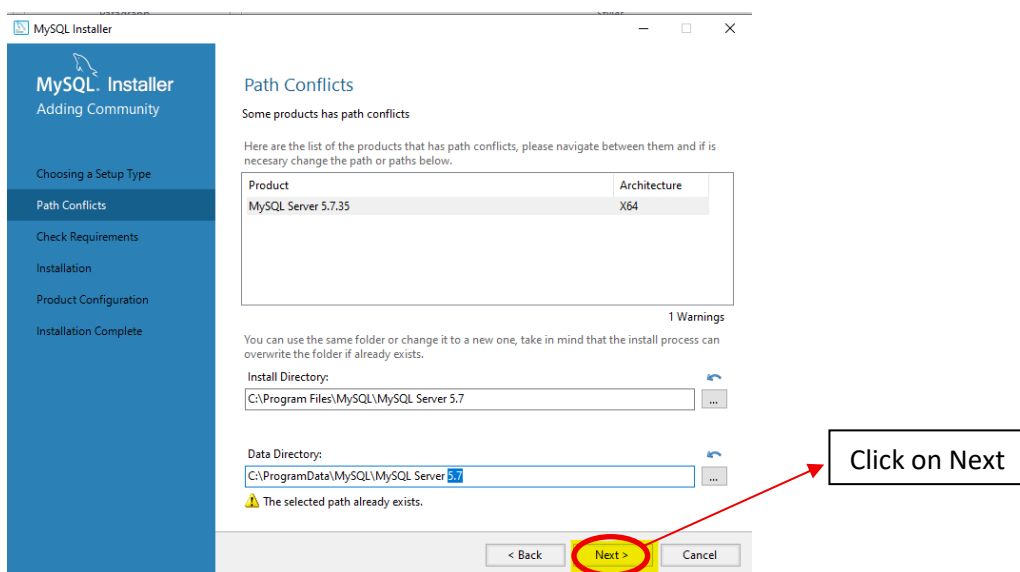
3. In the next wizard, choose the **Setup Type**. There are several types available, and you need to choose the appropriate option to install MySQL product and features. Here, we are going to select the **Developer** option and click on the **Next** button.

This option will install the following things: MySQL Server, MySQL Shell, MySQL Router, **MySQL Workbench**, MySQL Connectors, documentation, samples and examples, and many more.

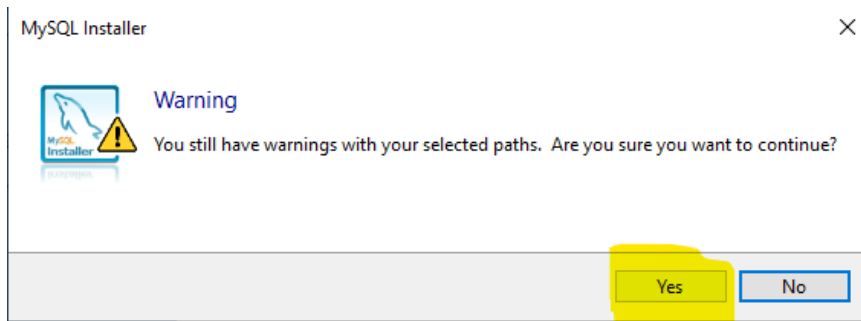
**Step 3:** Once we click on the Next button, it may give information about some features that may fail to install on your system due to a lack of requirements. We can resolve them by clicking on the **Execute** button that will install all requirements automatically or can skip them. Now, click on the **Next** button.



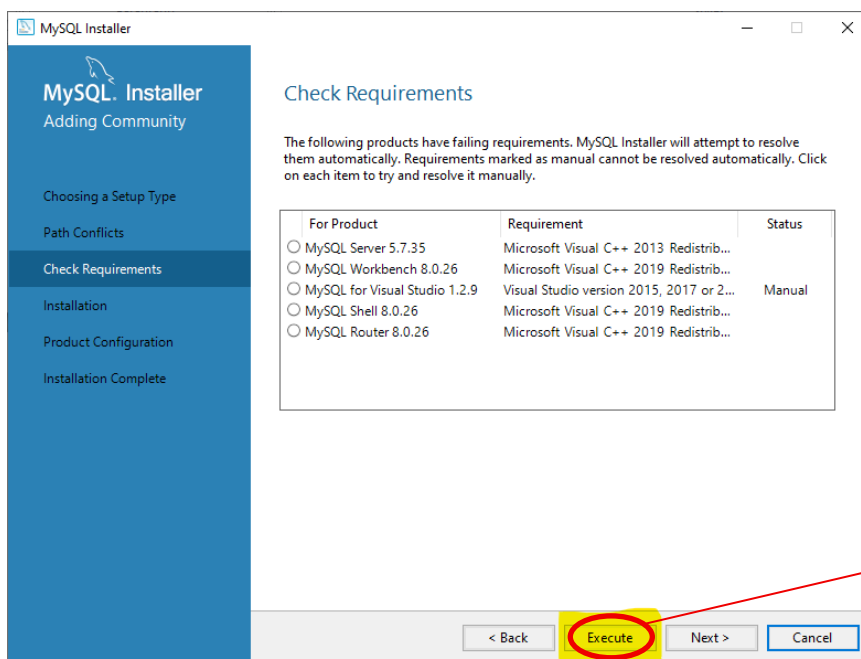
After, the software will be stored in the given image, **click on the Next**



After click it on Next, then alert box will appear click on Yes.

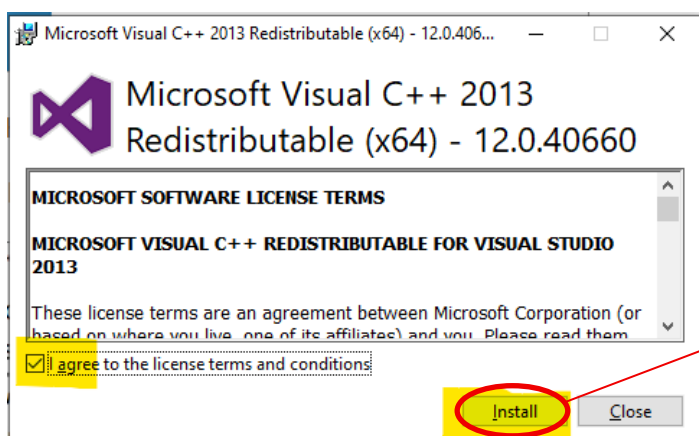


After clicking on the Yes button, we will see the list of the products which are going to be installed. So, if we need all products, click on the **Execute** button.



Click on Execute Button

After clicking on Execute button a popup window will appear, click on I agree, & click on Install

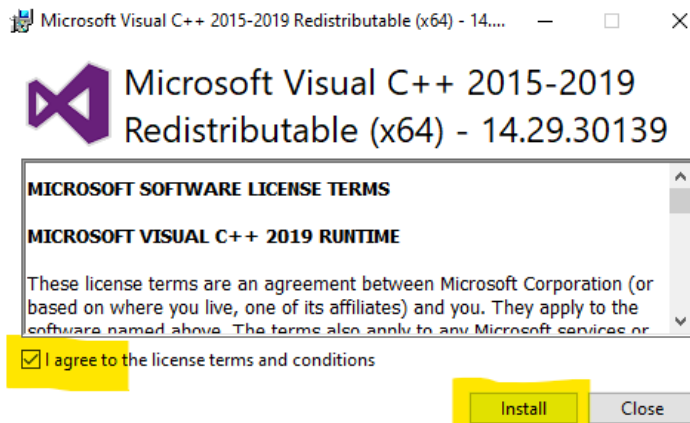


Click on install

After download c ++ language **close** the window

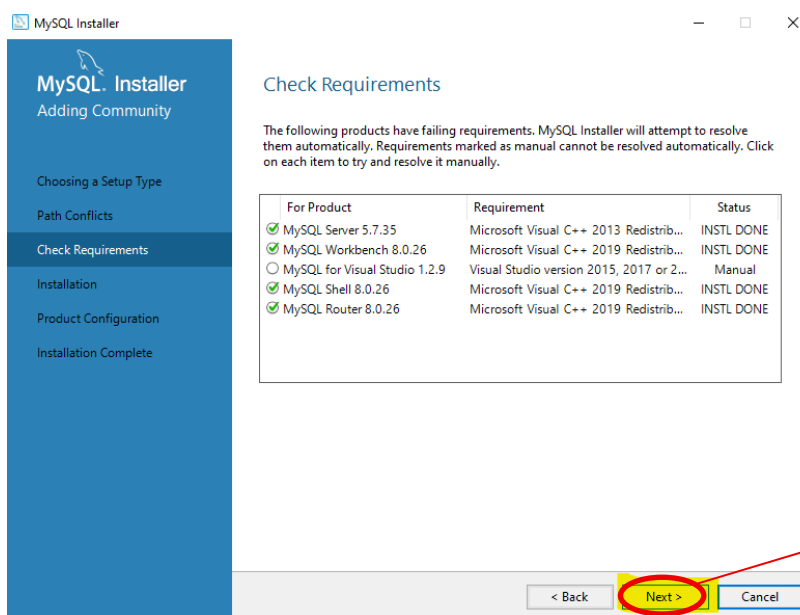
After close the given another alert in the alert we need to download to c language

Click on the check box and click on the **install**

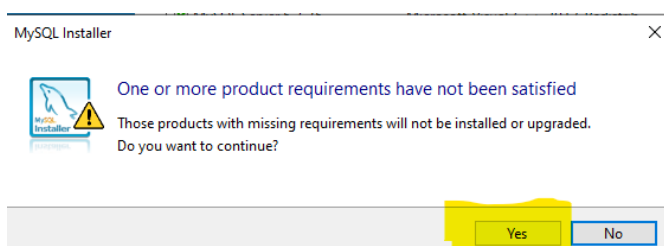


After download completion close the window  
And all supporting languages download

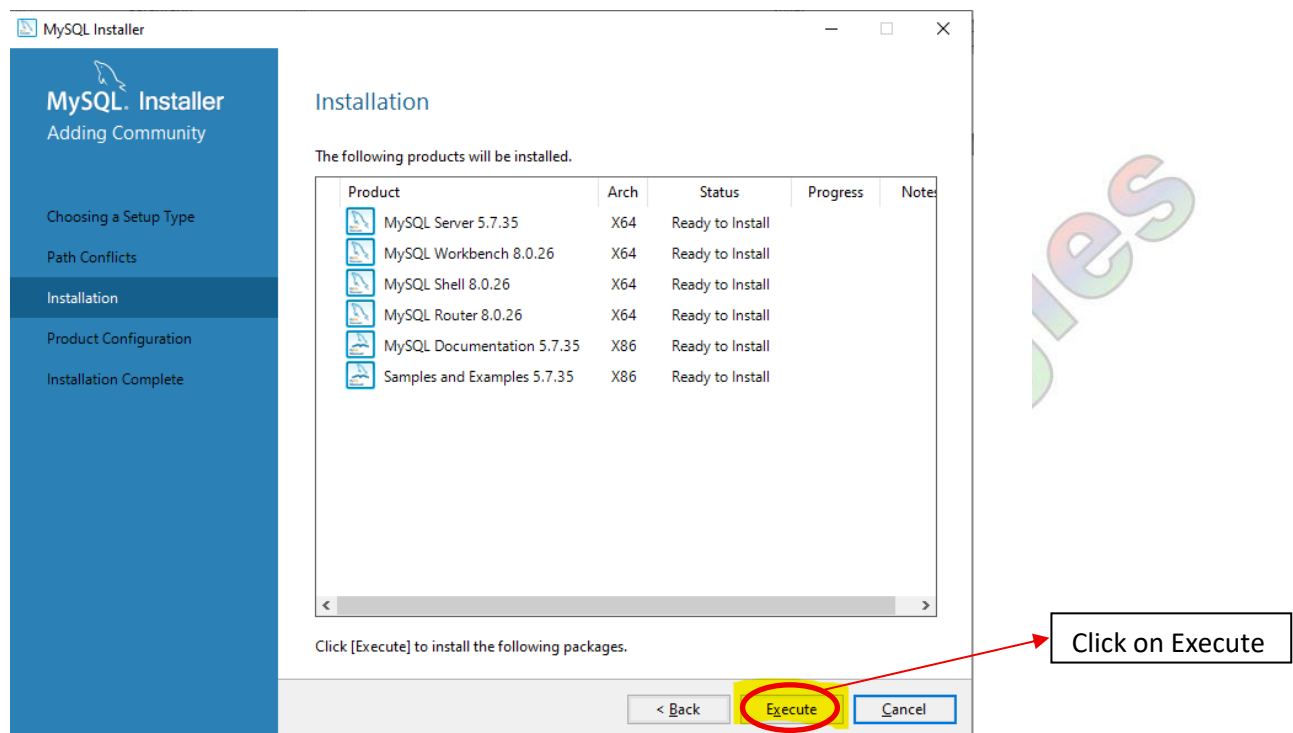
In the window click on the **Next**



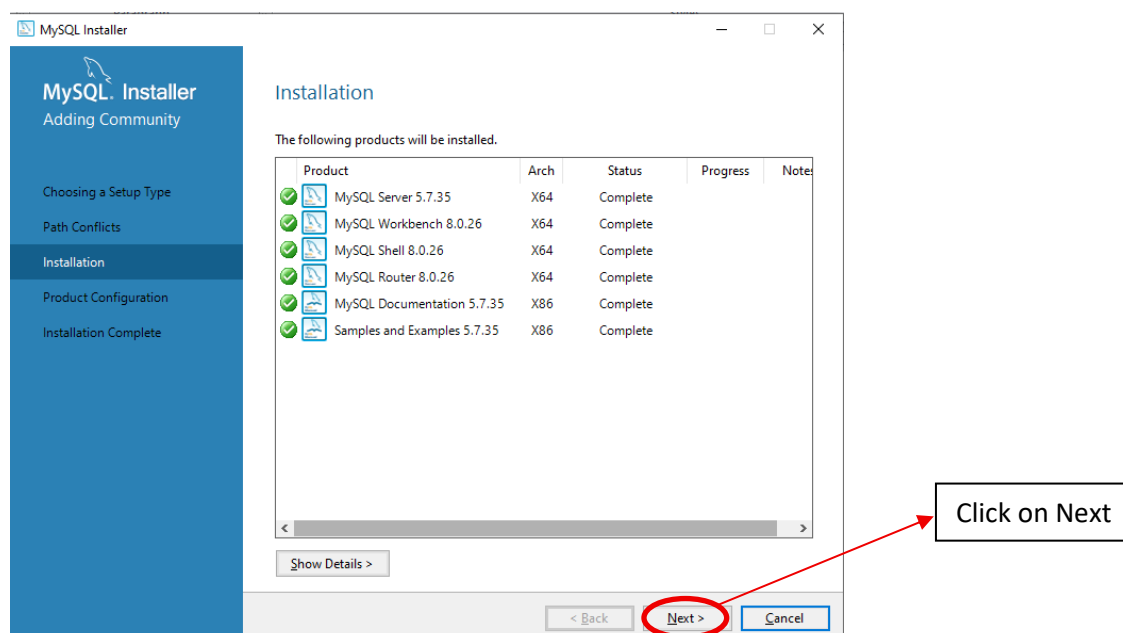
In the next wizard, we will see a dialog box that asks for our confirmation of a few products not getting installed. Here, we have to click on the **Yes** button.



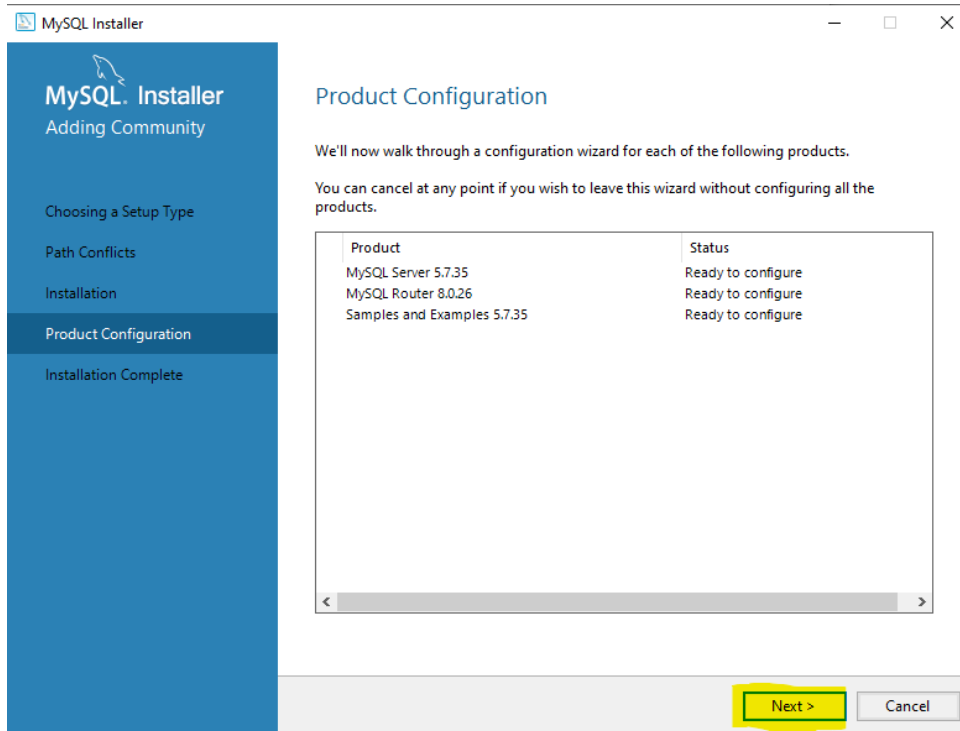
After clicking on the **Yes** button, we will see the list of the products which are going to be installed. So, if we need all products, click on the Execute button.



Once we click on the Execute button, it will download and install all the products. After completing the installation, click on the Next button.

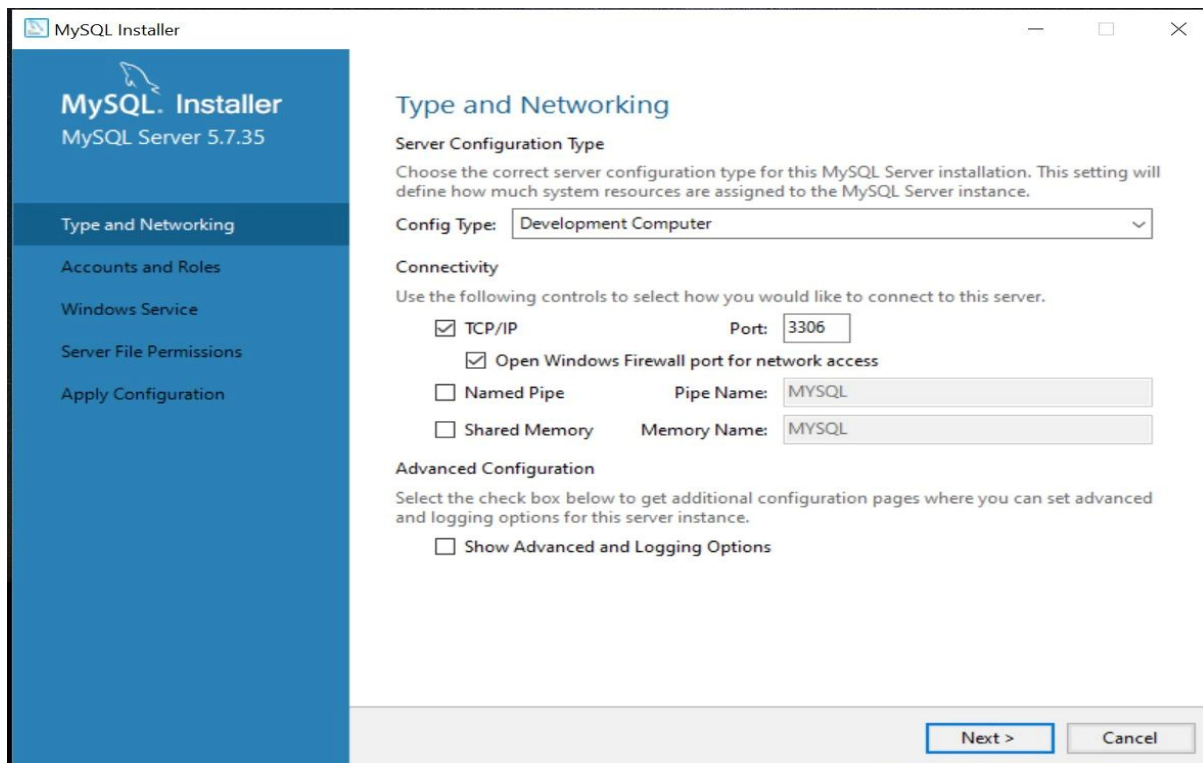


In the next wizard, we need to configure the MySQL Server and Router. Here, I am not going to configure the Router because there is no need to use it with MySQL. We are going to show you how to configure the server only. Now, click on the **Next** button.



In the next screen, the system will ask you to choose the Config Type and other connectivity options. Here, we are going to select the **Config Type** as 'Development Machine' and Connectivity as **TCP/IP**, and **Port Number** is 3306, then click on Next.

After click on the next the page will be [Type and Networking](#)  
In the window click on the Next





After click on the next the page Account And roles

Enter the data in fields

MYSQL Root password =root

Repeat password = root and click on Next

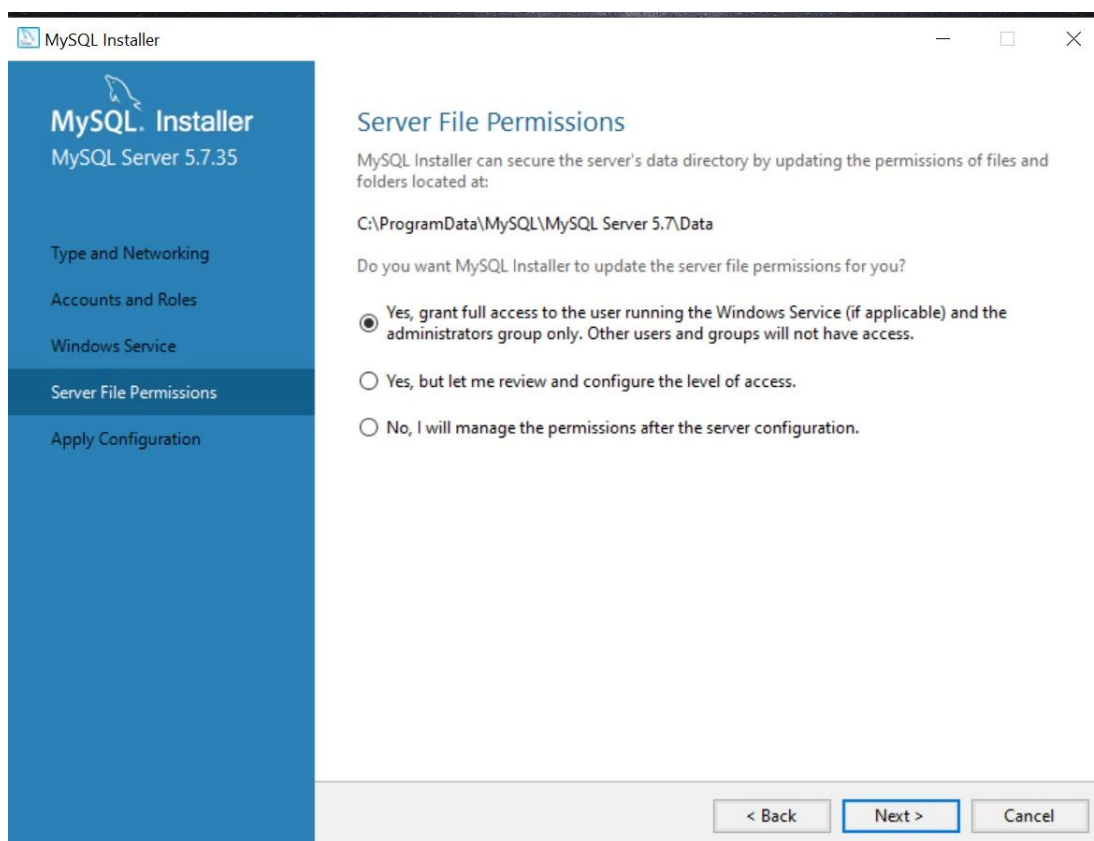
The screenshot shows the 'MySQL Installer' window for 'MySQL Server 5.7.35'. The left sidebar has 'Accounts and Roles' selected. The main area is titled 'Accounts and Roles' and contains two sections. The first section, 'Root Account Password', asks for the password for the root account. It has two input fields: 'MySQL Root Password:' and 'Repeat Password:'. The password strength is indicated as 'Weak'. The second section, 'MySQL User Accounts', instructs the user to create MySQL user accounts. It features a table with columns 'MySQL User Name', 'Host', and 'User Role'. To the right of the table are buttons for 'Add User', 'Edit User', and 'Delete'. At the bottom of the window are navigation buttons: '< Back', 'Next >', and 'Cancel'.

After click on the Next the next window will be move to Windows services

The screenshot shows the 'MySQL Installer' window for 'MySQL Server 5.7.35'. The left sidebar has 'Windows Service' selected. The main area is titled 'Windows Service' and contains several options. The first option is 'Configure MySQL Server as a Windows Service', which is checked. Below this is the 'Windows Service Details' section, which asks for a 'Windows Service Name' (the input field contains 'MySQL57') and has a checkbox for 'Start the MySQL Server at System Startup' which is also checked. The final section is 'Run Windows Service as ...', which offers two options: 'Standard System Account' (selected with a radio button) and 'Custom User'. At the bottom of the window are navigation buttons: '< Back', 'Next >', and 'Cancel'.

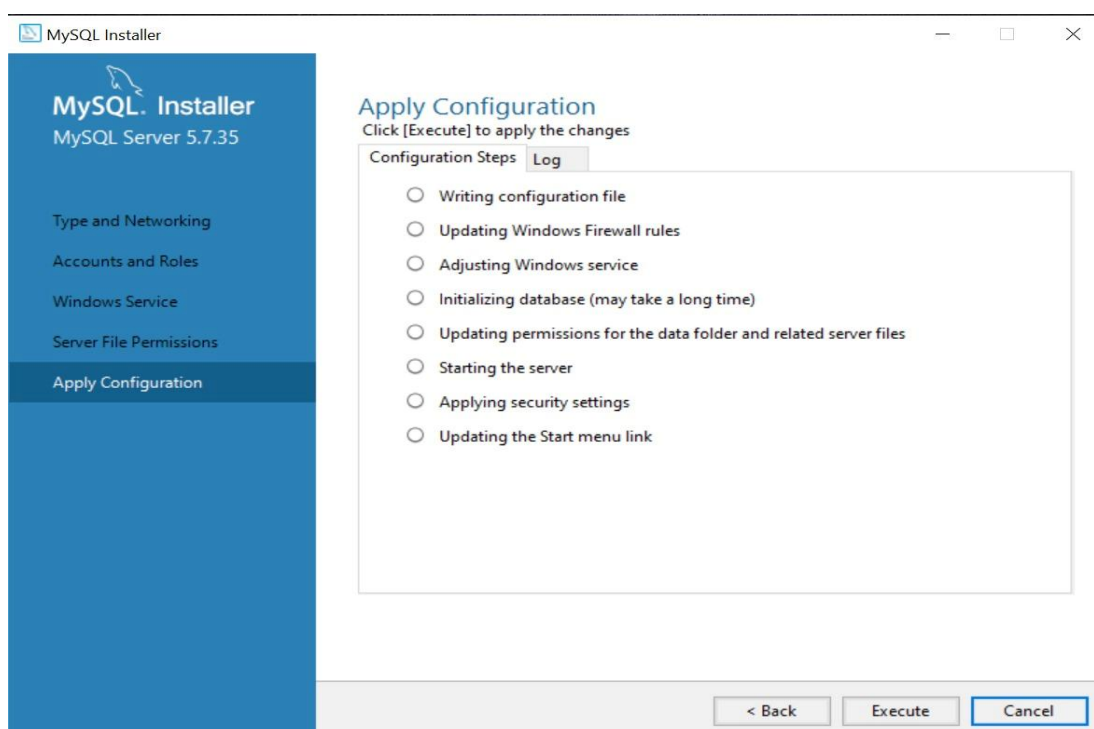
In the Above click on the Next

The page will be move to [Server File Permissions](#)

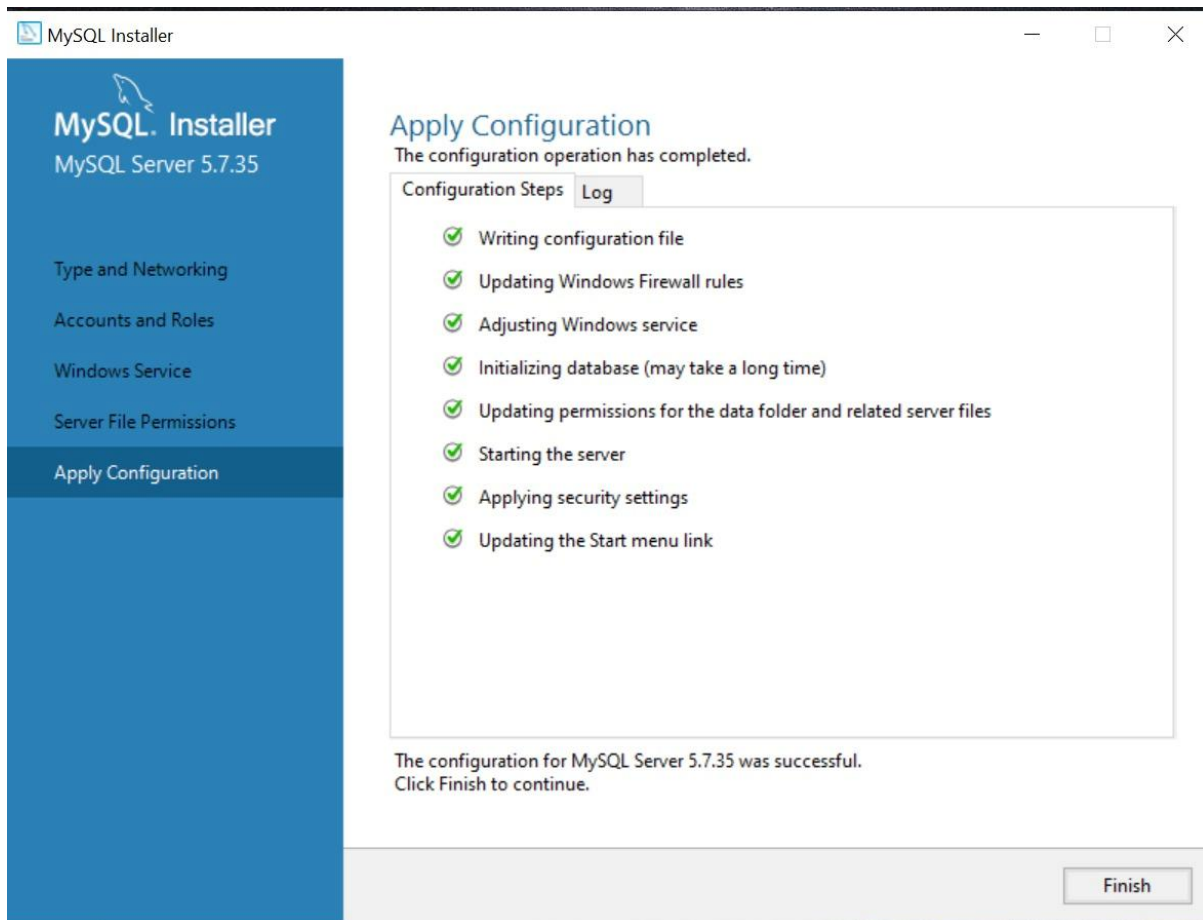


In the Above window click on the **Next**

After click on the next the window will be move to [Apply Configuration](#).

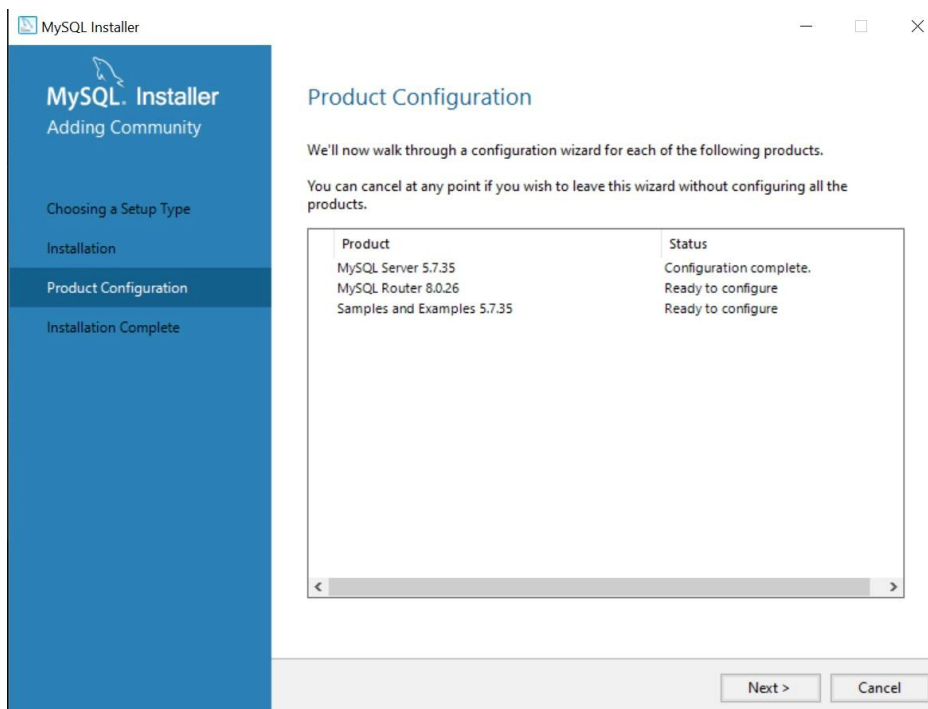


In the above window click on the **Execute**



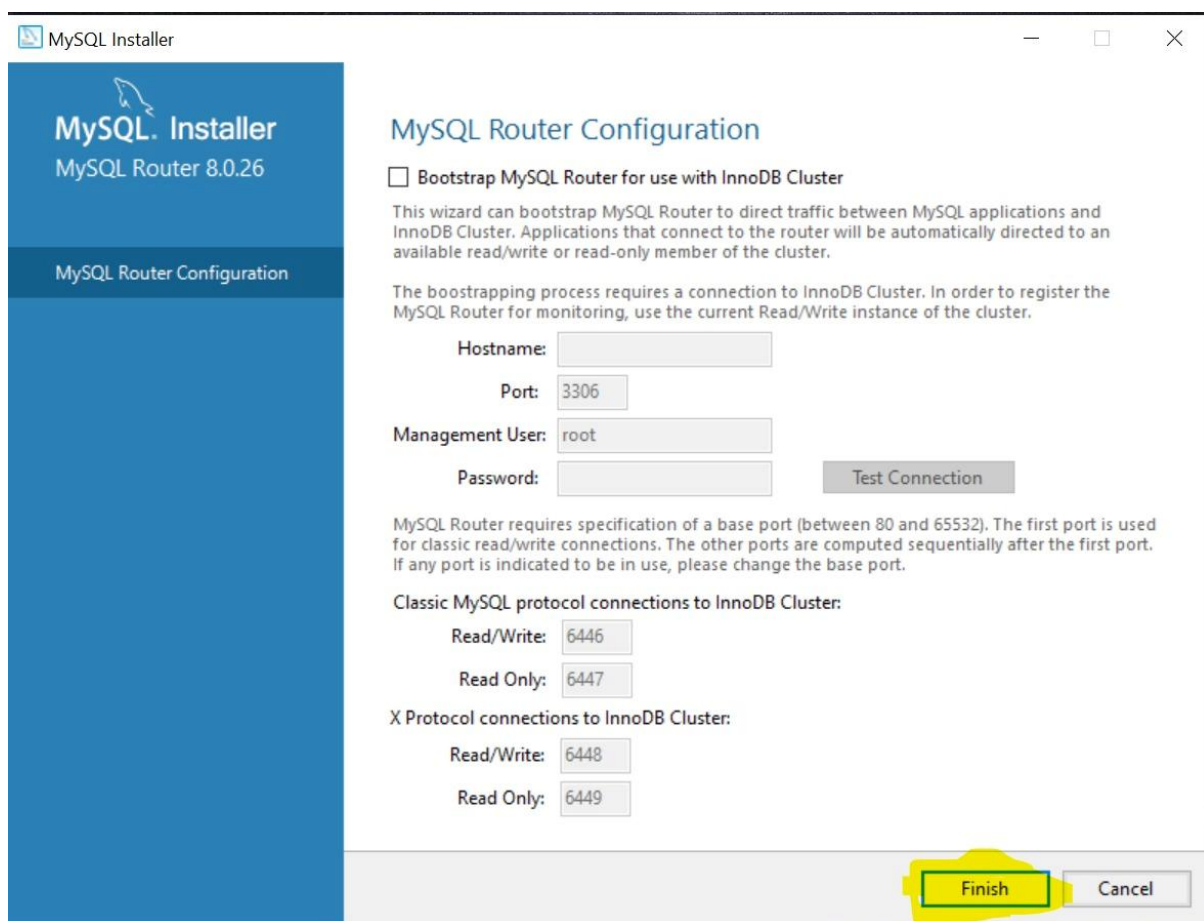
After complete download click on **Finish**

The window will be move to the **Product configuration**



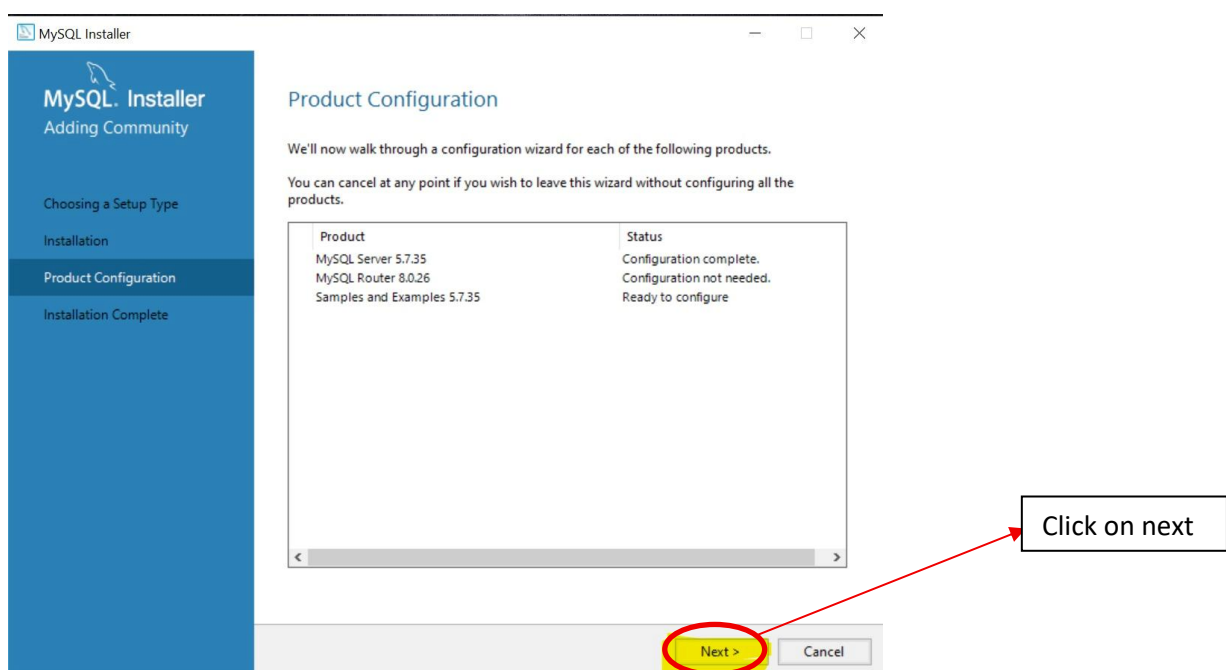
click on **Next**

After click on the next the window will be move to MY SQL Router configuration

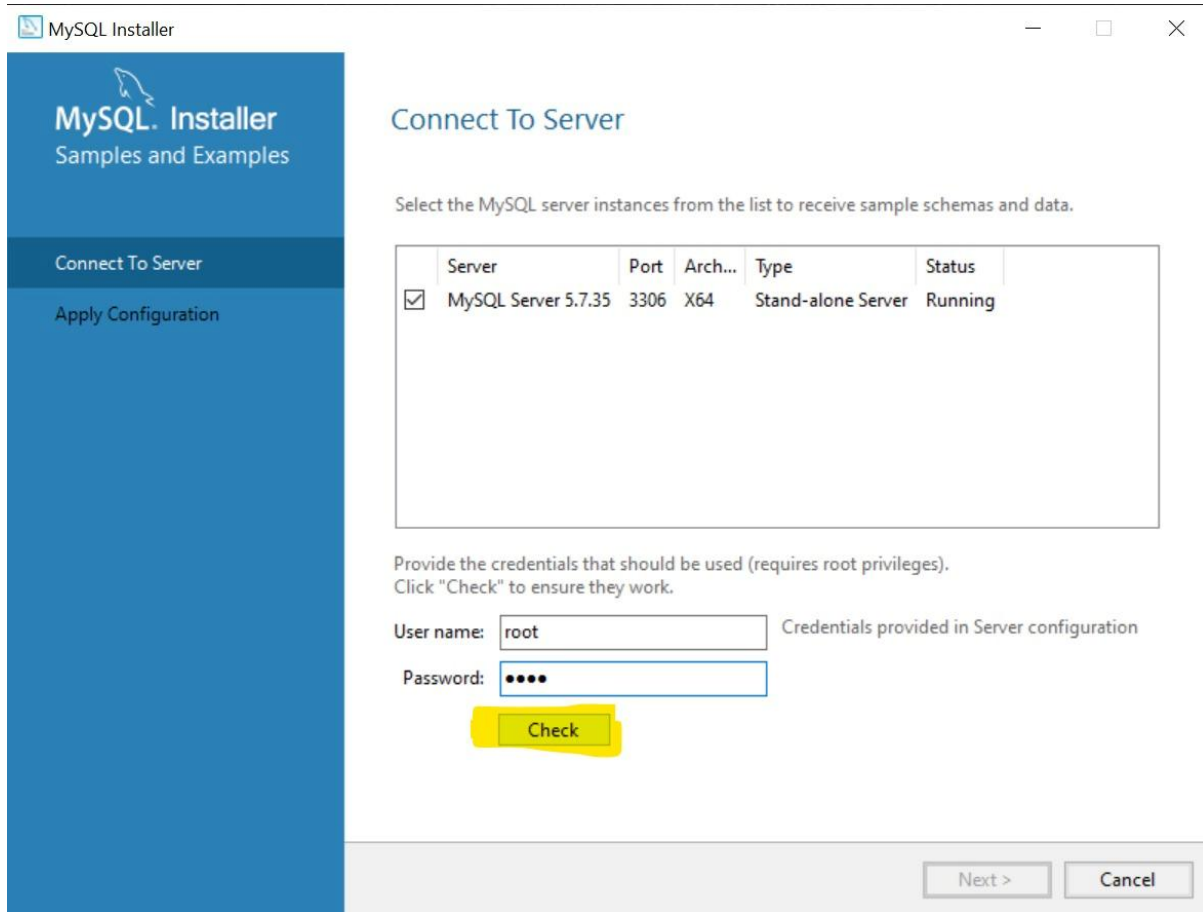


click on **Finish**

After click on **Finish** the window will be move to **Product configuration**



After click on the next the window will be move to the Connect to server  
In the window Give the **password =root**



MySQL Installer  
Samples and Examples

Connect To Server

Apply Configuration

Select the MySQL server instances from the list to receive sample schemas and data.

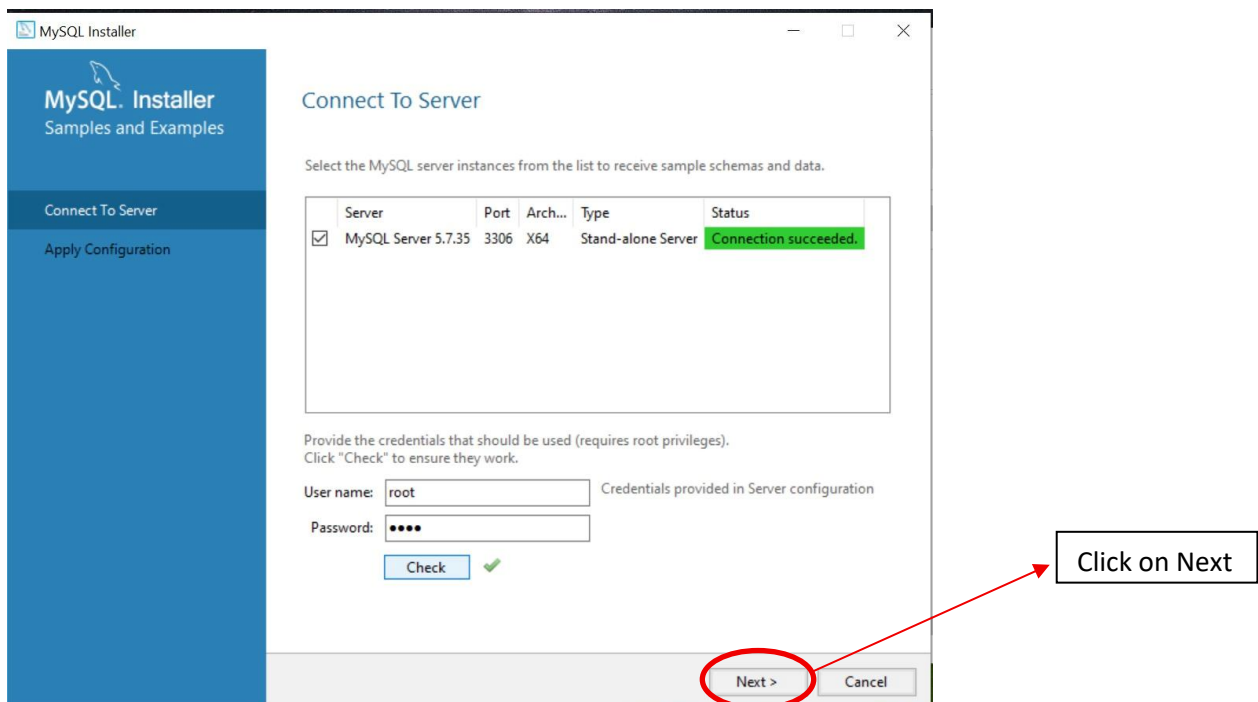
Server	Port	Arch...	Type	Status
<input checked="" type="checkbox"/> MySQL Server 5.7.35	3306	X64	Stand-alone Server	Running

Provide the credentials that should be used (requires root privileges).  
Click "Check" to ensure they work.

User name:  Credentials provided in Server configuration

Password:

And click on the check and server will be connect to our pc



MySQL Installer  
Samples and Examples

Connect To Server

Apply Configuration

Select the MySQL server instances from the list to receive sample schemas and data.

Server	Port	Arch...	Type	Status
<input checked="" type="checkbox"/> MySQL Server 5.7.35	3306	X64	Stand-alone Server	Connection succeeded.

Provide the credentials that should be used (requires root privileges).  
Click "Check" to ensure they work.

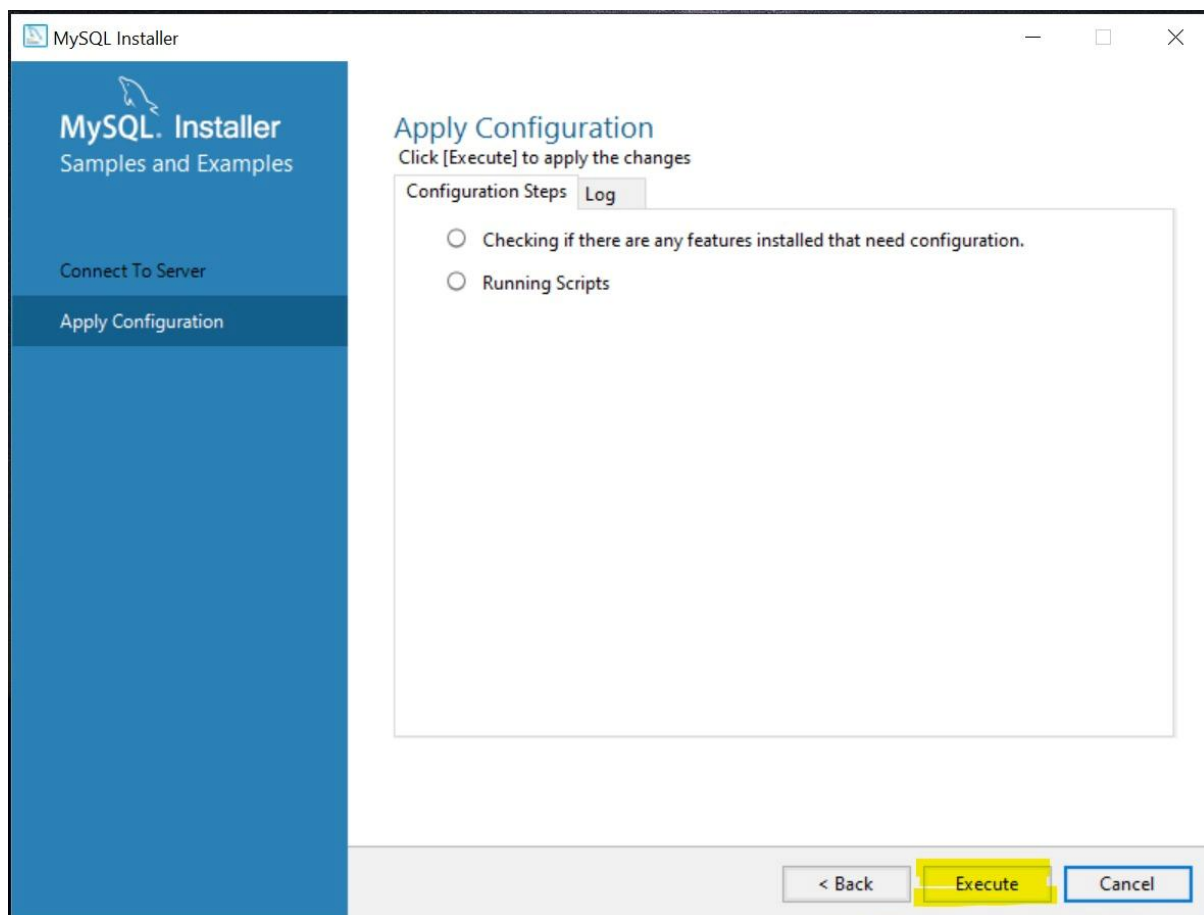
User name:  Credentials provided in Server configuration

Password:

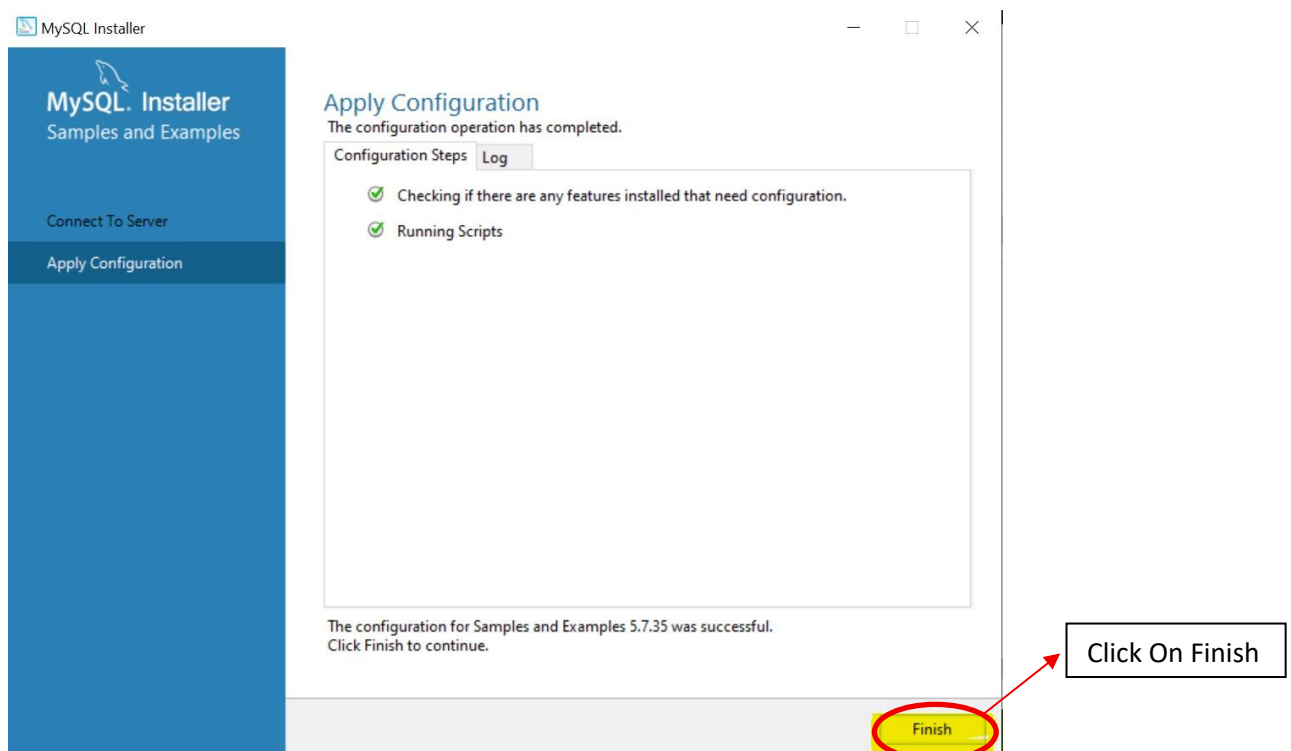
☒

Click on Next

The window will be move to the [Apply configuration](#)

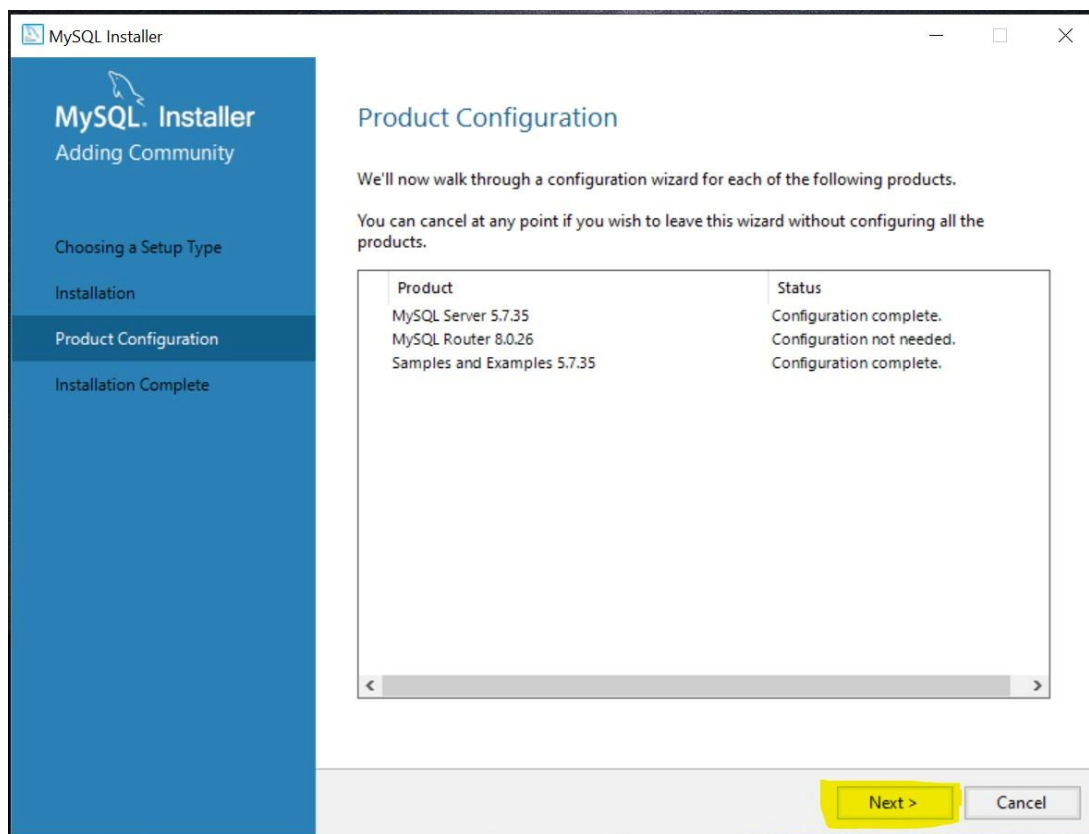


In the window click on the **Execute** the configuration Download

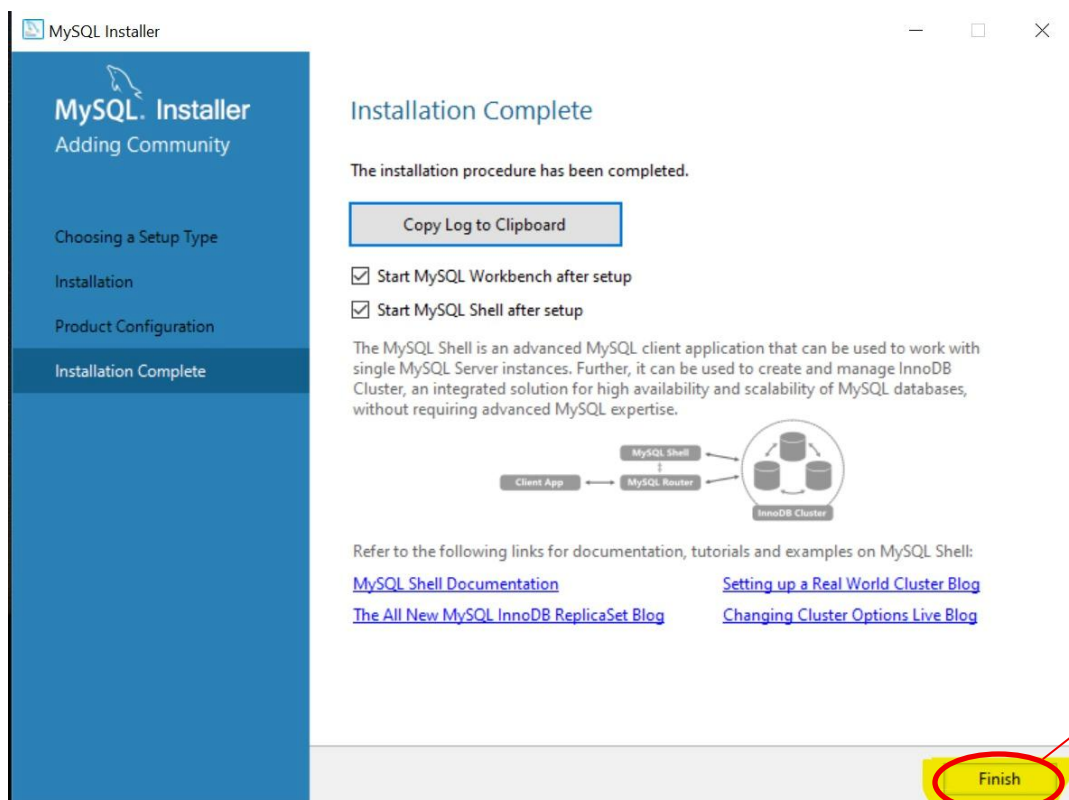




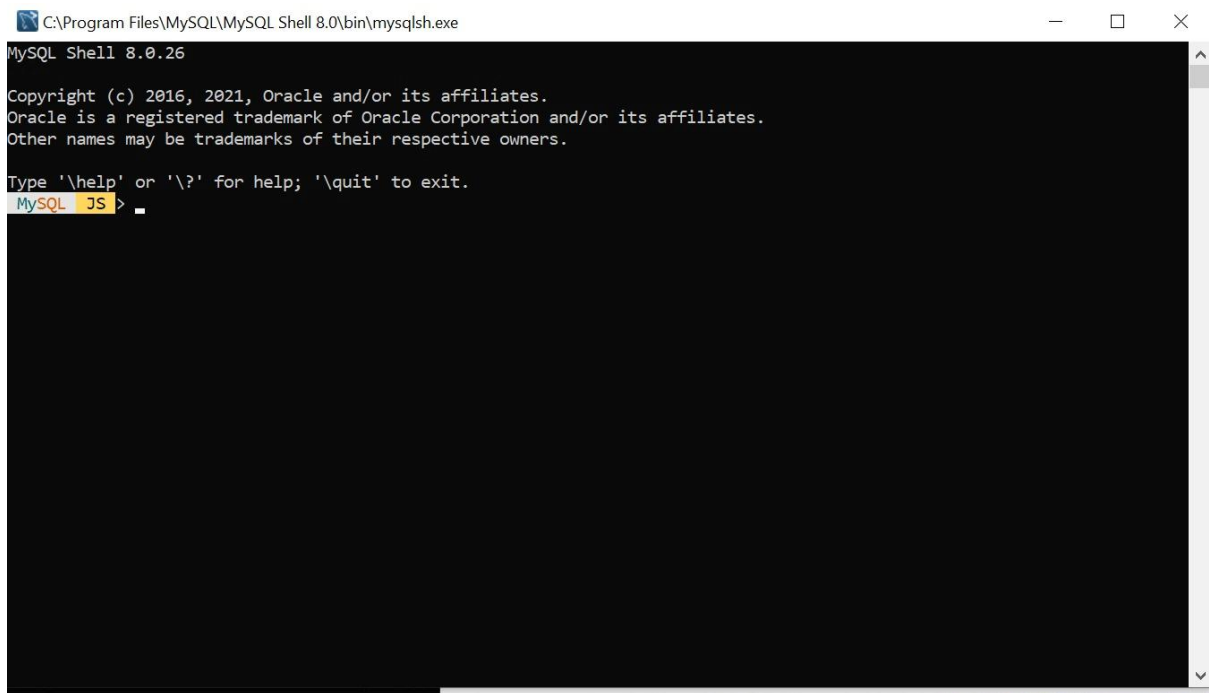
After click on the Finish, window will be move to [product configuration](#)



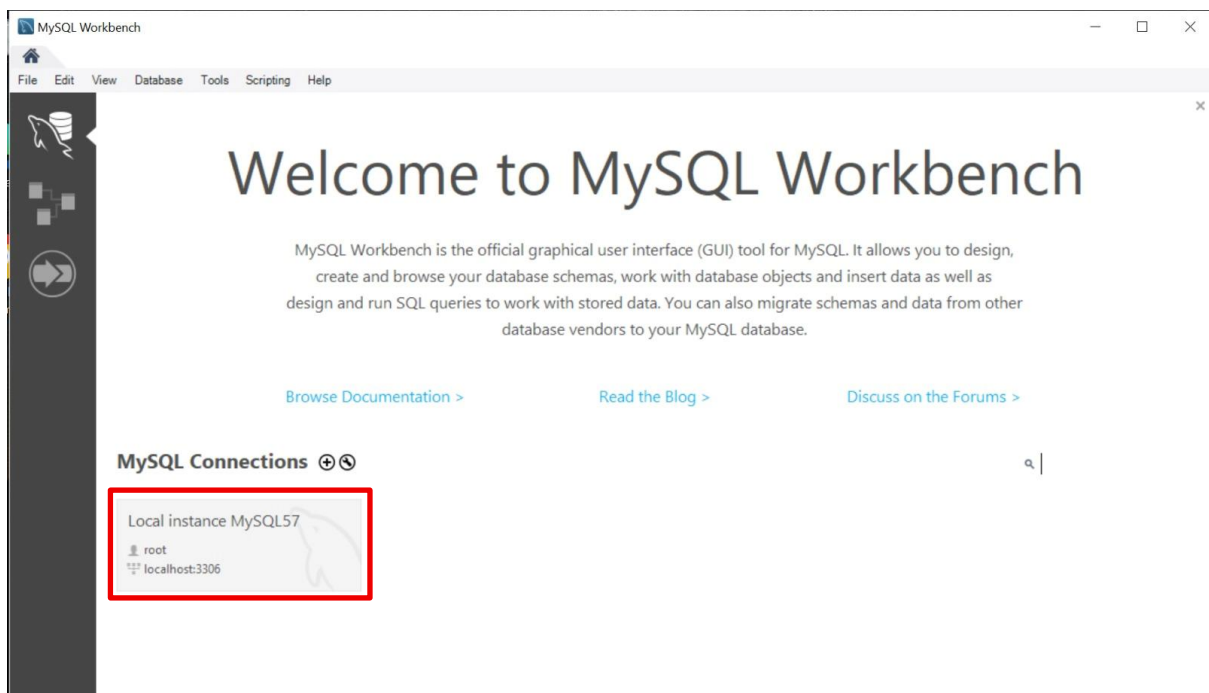
The window will be move to be [installation complete](#)



After Installation Complete then **MY SQL Shell** will be open



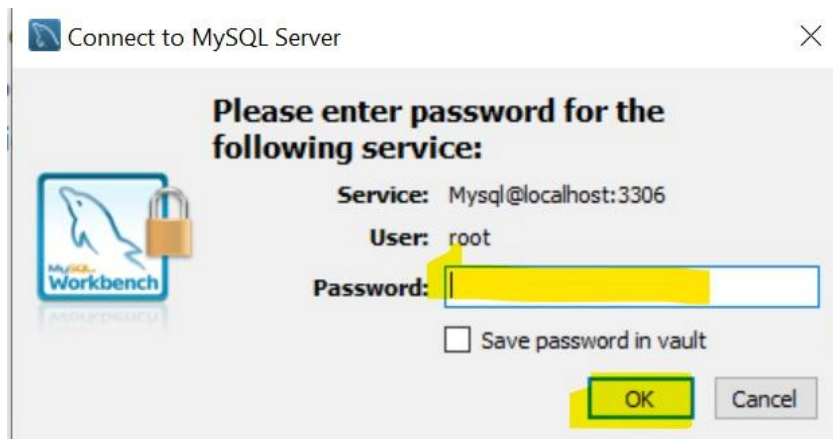
**MY SQL Workbench** will be open



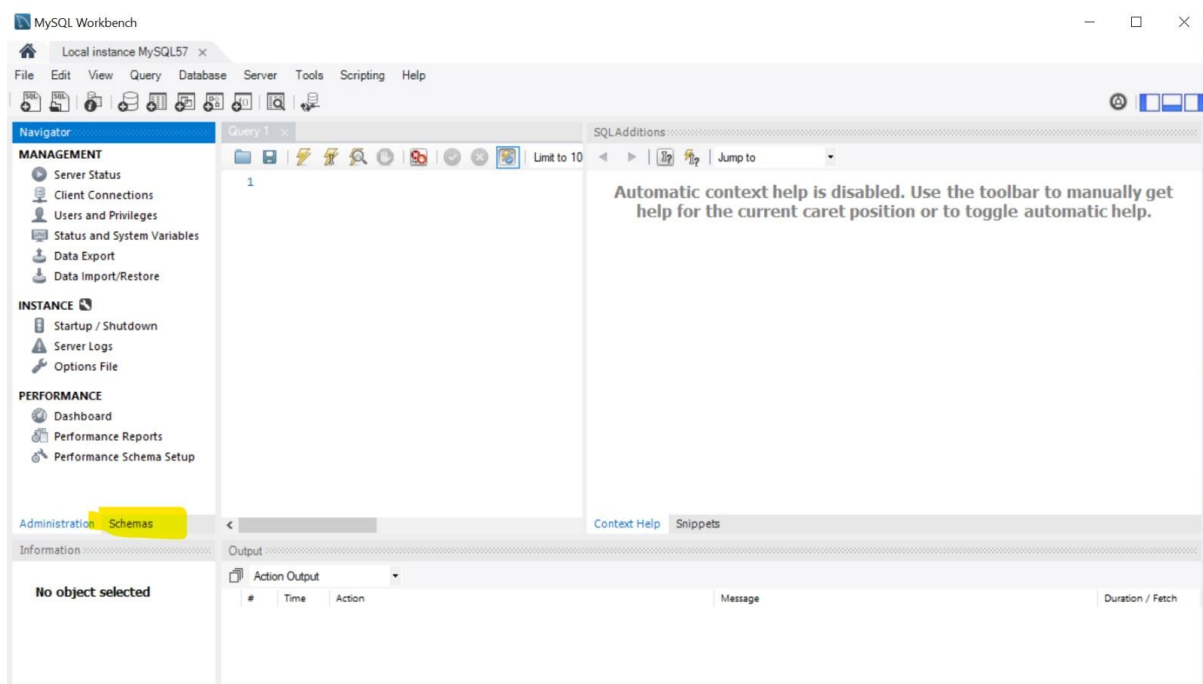
In the Above window click on the window click on the below **Highlight** one



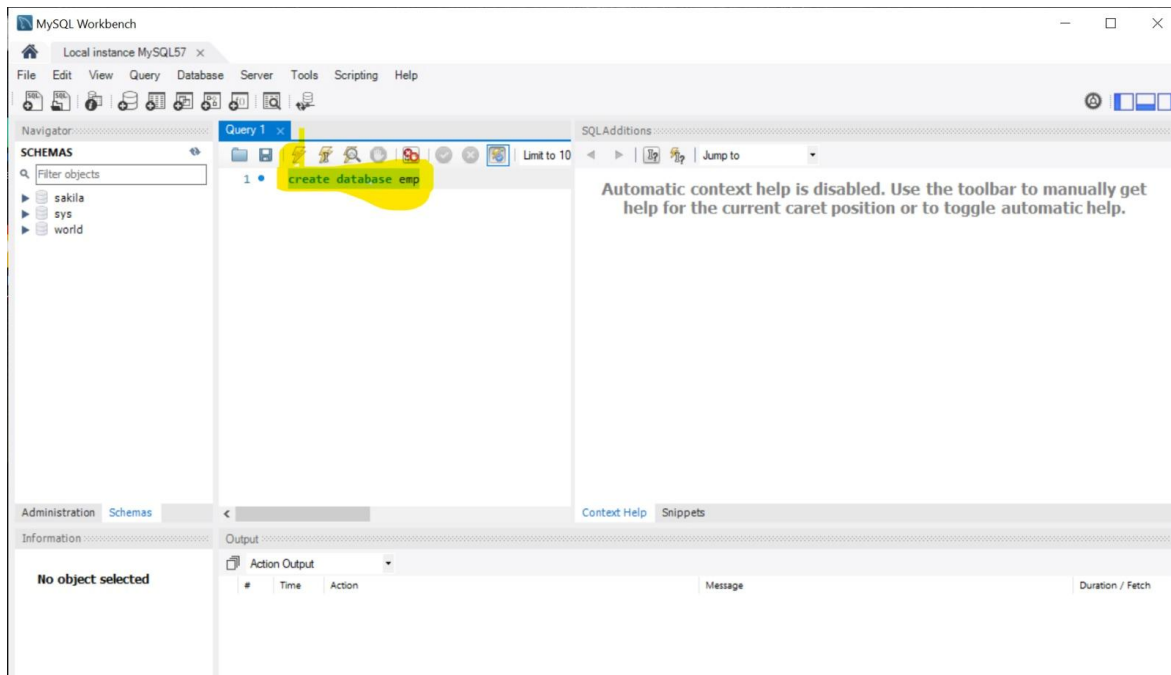
After click the Popup will be come in the popup Enter the password  
Password =root



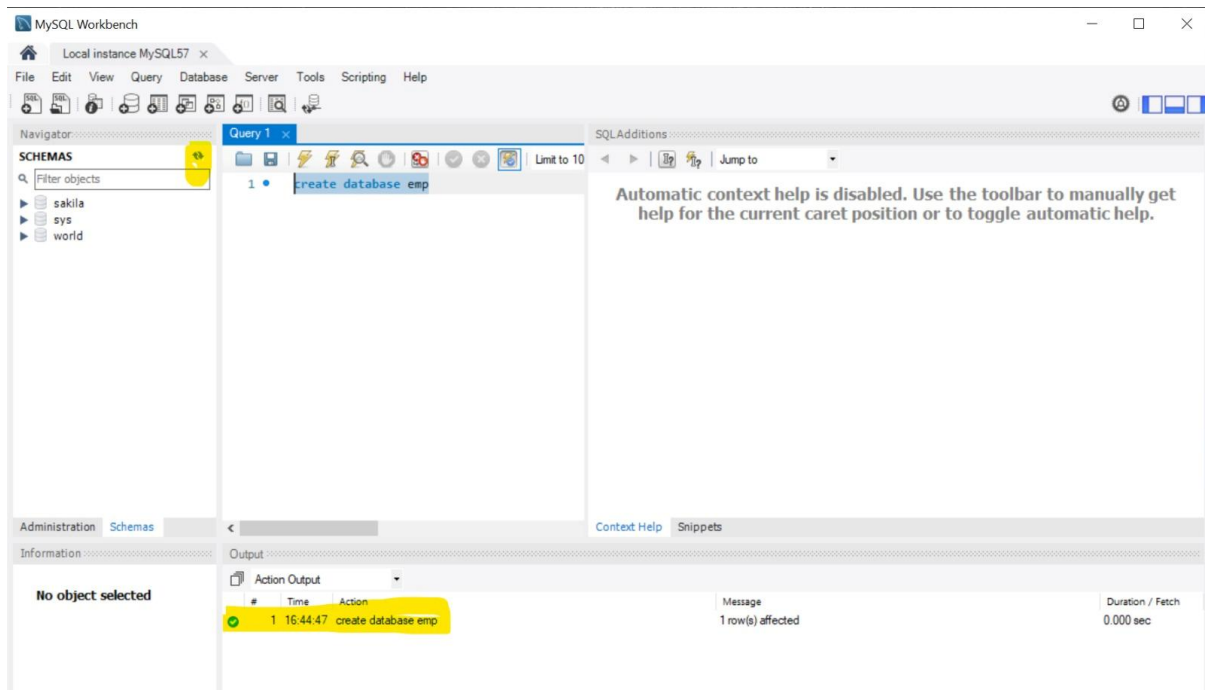
In the above popup click on **OK**



1. MYSQL workbench Editor will be open
2. in the editor click on the Schemas
3. in the Editor Write A query
4. Create database emp
5. Select the line and click on power button.



After click the data base will be created



Installation & Adding Database in My SQL successfully Done

**THANK YOU**