

June 2025 NEWSLETTER



BENDIGO WOODTURNERS INC.
BOX 1259 BENDIGO CENTRAL VICTORIA 3552

Volume 39: Number 06



Bendigo Woodturners Activities Program

General Meeting:	4th Monday Monthly	7.00pm
Executive Meeting:	1st Monday Monthly	6.30pm
Tuesday Group:	Every Tuesday	9.00am to 12.00pm
General Woodworking:	Every Thursday	9.00am to 12.00pm
Toy Group:	1st & 3rd Saturday Monthly	9.00am to 12.00pm
Pyrography Group:	1st & 3rd Tuesday Monthly	7.00pm
Carvers Group:	1st & 3rd Tuesday Monthly	7.00pm
Triton Group:	1st & 3rd Tuesday Monthly	7.00pm
Scroll Saw Group:	2nd & 4th Tuesday Monthly	7.00pm
Wood Turning Group:	2nd & 4th Tuesday Monthly	7.00pm
Group Activities:	Saturday (as required)	9.00am to 12.00pm

Bendigo Woodturners Directory

President:	Steve Brereton	Ph: 0419 389 259
Vice President:	Arthur Curnick	Ph: 0459 422 273
Past President: & Welfare Officer	Harald Mai	Ph: 0437 178 552
Secretary:	John Phillips	Ph: 0488 666 006
Treasurer:	Tammy Miatke	Ph: 0408 000 629
Assistant Treasurer:	Malcolm Hill	Ph: 0427 496 477
Editor:	Heather Pascoe	Ph: 0409 663 835
Committee:	Malcolm Hill, Andrea Tozer, Helen Franklin Chris Pascoe, David Alexander, Heather Pascoe	
Librarian:	Dawn Eason	Ph: 5446 3200
Assistant Librarian:	Cheryl Curnick	
Grounds Committee:	Jeff Willey	Ph: 0407 683 585
Public Officer:	John Phillips	Ph: 0488 666 006
Auditor:	Rod Lester	
Safety Officer:	Jeff Willey	Ph: 0407 683 585
Shop Operator:	Arthur Curnick	Ph: 0459 422 273
Assistant:	Norm Eason	
Equipment Officer:	Malcolm Hill	Ph: 0427 496 477
Assistants:	David Alexander, John Phillips, John McDonald	
Woodturning:	Arthur Curnick	Ph: 0459 422 273
Triton Group:	John Phillips	Ph: 0488 666 006
Pyrography Group:	Allan Edwards	Ph: 5432 6659
Scroll Saw Group:	Heather Pascoe	Ph: 0409 663 835
	Helen Craig	Ph: 0423 069 514
	Harald Mai	Ph: 0437 178 552
Carvers Group:	Bruce Guilmartin	Ph: 0428 387 550
Toy Group:	Kevin Trevan	Ph: 0487 851 878

Postal Address: Box 1259 Bendigo Central Vic. 3552
Editor: Heather Pascoe – heatherpascoe@gmail.com
Web site: www.bendigowoodturners.com

Show and Tell

This section of the meeting is open to all members to enable them to exhibit any interesting items that they have made, brought, found or otherwise acquired.

Monthly Competition

The competition for June is Scroll Saw, the competition for July is Carving.

The open competition is for any other items. One entry only in each section per month and once an item has been entered it cannot be entered again later. Entrants will be invited to discuss their entry detail allowing members to gain from your experiences.

President's Report

Hello Woodies,

Well, as I write this report we have just finished a very cold 3 days of Craft Alive and I would like to thank all of those brave souls who helped out during the 3 days to make it a successful exercise. The sales were down from last year but I think we were probably on average to other years of 3 days, John will clarify this. Our floor space was much smaller than previous years but it still worked ok, well done everyone.

We have 4 weeks to go till Sheep and Wool show, this is our big one, our Grand Final show and as a Richmond supporter, my only Grand Final for the year, bleat bleat you Geelong supporters (2020, ahhh yes). Keep up the quality work and I have no doubt that it will be another successful show. We will again be running a roster, keep an eye out on the board, John will update everyone on the cost each day.

I would like to thank all of those involved in creating and finishing the coffee table for the midyear raffle, it has really come up a treat and no doubt helped with raffle sales at Craft Alive, also thanks to the raffle spruikers.

We were hit with a number of workers going down with a pretty ordinary virus (not Covid) prior to and including Craft Alive and to their credit they all stayed away once we were set up, but this just highlights that there are a number of serious viruses around let alone Covid and the Flu, if you are unwell please stay away from the club and Sheep and Wool show, it is not fair on everyone. If you are ill before Sheep and Wool show club members can set up your sales for you, just reach out.

For those of you who are unaware, a new video doorbell has been installed on the front door, if you find the door locked on Tuesday or Thursday, just ring the bell and wait for someone to open the door, this has been installed to stop unwanted intruders entering the building during days or nights that we are open.

That's all for now, keep on turning.

Steve Brereton

President

Secretary's Report

Hello All,

No new members to welcome in this report, so straight into business.

We have just finished CraftAlive at the Showgrounds and it was very successful again. That being said, it wasn't as good as last year but it was certainly on par for most of the recent years. The CraftAlive team are most sincere when they tell us that they love having us there as a NFP group and many patrons remember us and return knowing that we will be there. Total profit for the club from commissions, toy sales and raffle was about \$1,800, which is great. Thank you to our raffle ticket sellers who brought in about \$1,200, a fantastic effort.

Our next major event is the Sheep & Wool Show from 18 to 20 July at the Showgrounds. This event is now our biggest turnover than any other. It will be cold in the mornings so rug up. The cost for a 3-day pass for exhibitors is \$35.00 (full price \$67.00, pensioner \$40.00) and \$33.00 for a 3-day parking pass. This cost adds up very quickly for the club to try and absorb so our policy for the last couple of years is for members attending to pay \$5.00 per day (\$15 for 3 days), and the club to subsidise the rest. This subsidy only applies to those assisting/working at the Club display. Please see blackboard for names, payment will be requested prior to event.

As just mentioned, the Sheep Show is BIG for the Woodturners so I strongly suggest you get busy.

This must nearly be a first but I have nothing to mention about past or near future Bunnings events.

Steve probably has mentioned this but there are some serious viruses going around at the moment, flu and colds etc. So, if you feel crook stay home in the warm and don't spread it and come back to us when you can nice and healthy.

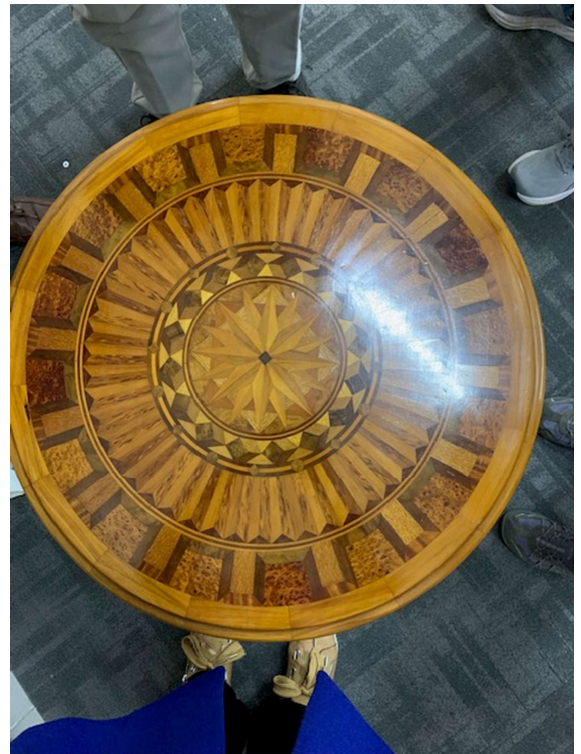
Stay safe

**John Phillips,
Secretary**

May Monthly Meeting



Show & Tell – Kevin Trevan brought in a table made by his grandfather , Percy , born in New Zealand in 1882; migrating to Melbourne in 1912. Percy was a carpenter then went into cabinet making Table was made around 1930-46 Kevin remembers it in the lounge room growing up. The table has around 400 inlaid pieces possible Kauri legs and frame. The leg length of the table has possibly been reduced as there originally was a shelf. Finish is shellac and beeswax This is probably the last piece Percy made as he fell off a tram in 1945 and died from infection in 1946



Jeff Willey demonstrated how to use the router – as always SAFETY FIRST, if you don't know how to use it ASK

CRAFT ALIVE



Figure 1 Our set up - small but impressive



2 Bendigo Advertiser, Monday 16 June

Chris Pascoe. Photo Darren Howe

Events Calendar

June 2025	
2 nd	Executive Meeting
23 rd	General Meeting
This month's competition is Scroll Saw	
July 2025	
7 th	Executive Meeting
18-20 th	Sheep & Wool Show
28 th	General Meeting
This month's competition is Carving	
August 2025	
4 th	Executive Meeting
9 th	Open Day
26 th	Annual General Meeting – no competition
September 2025	
1 st	Executive Meeting
22 nd	General Meeting
This month's competition is Wood Turning.	
October 2025	
3 rd -5 th	Dingley Art Trail
6 th	Executive Meeting
27 th	General Meeting
This month's competition is Pyrography	
November 2025	
3 rd	Executive Meeting
24 th	General Meeting
This month's competition is Scroll Saw	
December 2025	
1 st	Executive Meeting
7 th	Christmas Party
No general meeting in December	

Our Sponsors

