



Maeda MC305c-2

Technical specifications

Offering the best balance of power and design



- Two Travel Speeds
- Programmable Moment Limiter
- Rubber Tracks
- Hydrostatic Transmission
- Centralised Controls
- 4 Fall / 2 Fall Hook Block
- Automatic Hook Stowage System
- Tilt Sensor/Alarm
- Powerful Winch with Hydraulic Disc Brake
- Two Speed Winch
- Fully Automatic Pentagonal Section Boom
- Cable Remote Controller

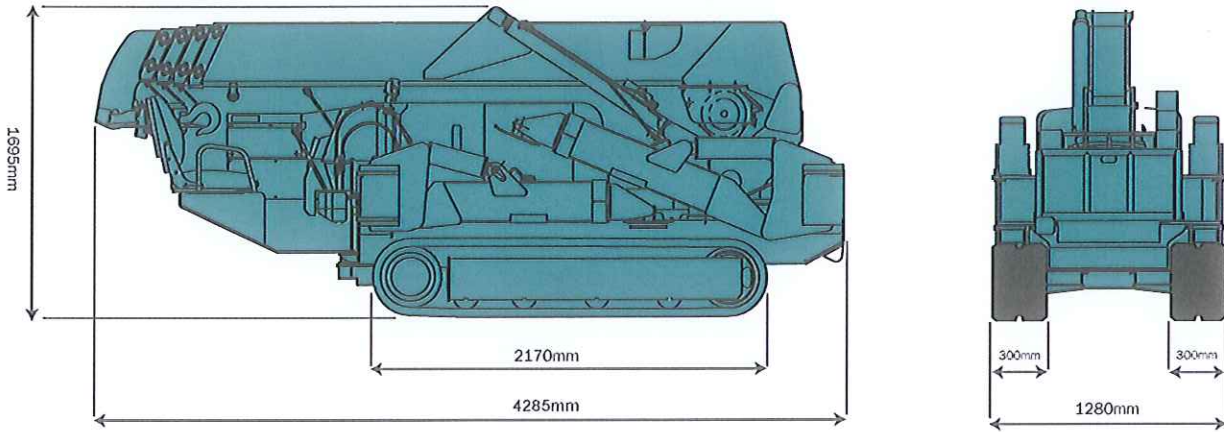
Specification

Model	MC305C-2	
Crane capacity	2.98t x 2.5m	
Max. working radius	12.16m	
Max. lifting height	12.52m	
Hook speed	13.5m / min. (4 falls, 4th layer)	
Single line speed	54m / min. (4th layer)	
Hoist rope	IWRC 6 x WS(26) 8mm x 73m	
Telescopic system	Boom length	3.695m - 12.485m
	Telescoping speed	8.79m / 38 sec. (26 sec.)
	Boom type	Fully automatic 5 section pentagonal telescopic boom
Boom hoist system	Hoist angle / speed	0 - 80° / 21 sec. (14.5 sec.)
	Slew system	Slew angle / speed
Outrigger system	Type	Extension and set up by direct acting hydraulic cylinders
	Maximum extended dimensions	(Length) 4888mm x (Front) 4504mm x (Rear) 4396mm
Traction system	Drive	Hydraulic motor driven, stepless speed changer
	Travel speed	0 - 2.8 km/h (1.3 km/h)
	Gradability	23°
	Crawler length x width	1750mm x 300mm
	Ground pressure	36.3 kpa (0.37 kgf/cm ²)
Engine	Model	Yanmar 3TNV76
	Type	3 cylinder water cooled diesel, 1.15 litre.
	Rated output	15.2kw / 2500min ⁻¹ (20.7PS/2500rpm)
	Starting method	Electric
	Fuel / Fuel tank capacity	Diesel / 40L
	Remote control system	Type
Dimensions	Length x Width x Height	4285mm x 1280mm x 1695mm
	Weight MC305C-2	3900kg 4040kg (with electric motor)
Standard equipment	Overwind protection, load indicator, hydraulic safety valve, wire rope latch, level, machine body inclination alarm, EMO switch, travel lock lever, outrigger interlock device, moment limiter, rotary lamp, hour-meter, 4-fall / 2-fall hook block	
Optional equipment	Radio remote control, white rubber tracks, single fall hook, searcher hook. Electric motor.	

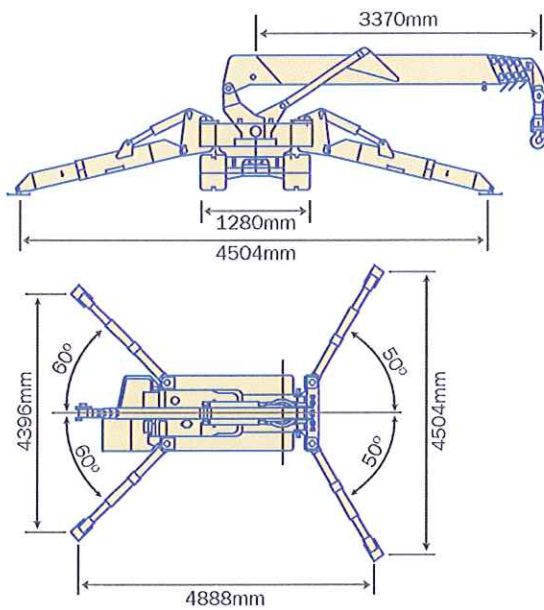
Maeda MC305c-2

Dimensions

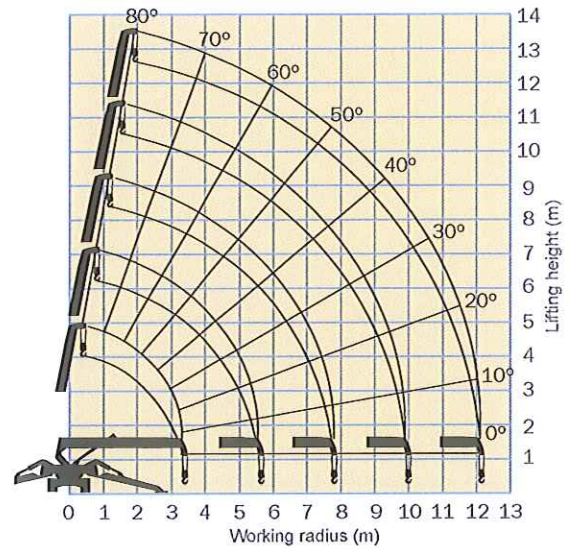
Overall Size



Outrigger Spread Dimensions



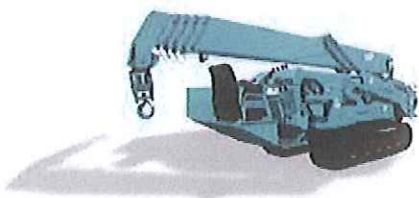
Working Range Chart



The Working Range Chart does not take into account boom deflection under load.

The maximum reach below ground level is:

Four Fall	Two Fall	Single Fall
16.09m	32.18m	64.36m



Maeda MC305c-2 Load Charts

Total rated load Outriggers at Maximum position

5.945m boom		8.145m boom		10.315m boom		12.485m boom	
Working radius (m)	Total rated load (kg)	Working radius (m)	Total rated load (kg)	Working radius (m)	Total rated load (kg)	Working radius (m)	Total rated load (kg)
< 2.5	2980	2.7	2270	4.0	1080	< 4.5	790
3.0	2390	3.0	2120	4.5	985	5.0	660
3.5	1990	3.5	1680	5.0	880	6.0	520
4.0	1710	4.0	1440	6.0	770	7.0	430
4.5	1490	4.5	1260	7.0	670	8.0	380
5.0	1340	5.0	1110	8.0	570	9.0	340
5.62	1160	5.5	990	9.0	500	10.0	310
		6.0	880	9.99	435	11.0	280
		7.0	730			12.16	260
		7.82	630				



Total rated load Outriggers at Intermediate position

5.945m boom		8.145m boom		10.315m boom		12.485m boom	
Working radius (m)	Total rated load (kg)	Working radius (m)	Total rated load (kg)	Working radius (m)	Total rated load (kg)	Working radius (m)	Total rated load (kg)
< 2.5	2980	2.7	2270	4.0	1060	< 4.5	780
3.0	2390	3.0	2090	4.5	950	5.0	650
3.5	1960	3.5	1680	5.0	860	6.0	500
4.0	1680	4.0	1420	6.0	750	7.0	410
4.5	1380	4.5	1240	7.0	630	8.0	360
5.0	1140	5.0	1070	8.0	490	9.0	320
5.62	950	5.5	950	9.0	410	10.0	290
		6.0	800	9.99	350	11.0	260
		7.0	610			12.16	250
		7.82	520				



Total rated load Outriggers at Minimum position

5.945m boom		8.145m boom		10.315m boom		12.485m boom	
Working radius (m)	Total rated load (kg)	Working radius (m)	Total rated load (kg)	Working radius (m)	Total rated load (kg)	Working radius (m)	Total rated load (kg)
< 2.5	2980	2.7	2270	4.0	1060	< 4.5	780
3.0	2350	3.0	2090	4.5	950	5.0	650
3.5	1800	3.5	1680	5.0	860	6.0	500
4.0	1430	4.0	1370	6.0	680	7.0	410
4.5	1140	4.5	1120	7.0	530	8.0	360
5.0	950	5.0	910	8.0	420	9.0	320
5.62	790	5.5	790	9.0	340	10.0	290
		6.0	670	9.99	300	11.0	240
		7.0	510			12.16	210
		7.82	430				



The Total Rated Load Charts are based on the actual working radius including boom deflection. The weight of the hook (standard 4 fall - 30kg) must be included as part of the load shown in the Total Rated Load Charts.

When using two fall or single fall hooks, use the appropriate four fall Total Rated Load Chart above but with a maximum load of: Two Fall - 1480kg, Single Fall - 750kg.

