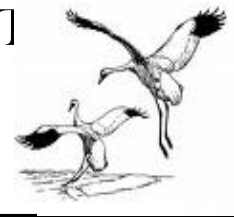




PICKEREL/CRANE LAKE P&R DISTRICT

Protection and Rehabilitation District

Newsletter



From the Chairman's Desk...

On July 28th your Lake District held a Commissioners meeting to discuss the 2014 Pickerel/Crane Lake District proposed budget. After a lengthy discussion of budget line items we were able to work out a workable budget without raising the Lake District tax levy. Fortunately, we have been able to keep the same levy for over the last 15 years if my memory serves me correctly. There may come a time when we will not be able to do so but for now we are able to function under the same tax levy. While on the subject of finances, this budget will reflect the additional \$3000 being spent on the 2013 Walleye Restoration project on Crane Lake. If you will recall there was a motion made and passed at the spring 2013 meeting authorizing us to spend this additional amount in 2013. The total stands at \$10,500 on this project. In 2014 the amount will be reduced to \$7,500.

On July 19th I received an email from biologist Gregory Matzke of the WDNR proposing a Bullhead eradication project on Pickerel Lake. If you recall, the WDNR took out 8,345 Bullheads out of Crane Lake this year which amounted to 5,899.5 lbs. of Bullheads. It seems that he is now presenting us with a proposal to remove an estimated 15,000-20,000 lbs. of Bullheads from Pickerel Lake in 2014. Biologist Matzke asked if the Lake District could donate between \$700 and \$1,000 to help cover some

some of their travel costs during this eradication project. At the Commissioners meeting we felt that if it was a good idea to net the Bullheads out of Crane Lake it would probably be advantageous to do the same in Pickerel. It was also felt that we may not have another opportunity like this again. We did learn from the removal on Crane Lake that Bullheads eat anything that they can get in their mouths including small perch other pan fish and even small Walleyes. With this being said, we included the WDNR donation request in the proposed 2014 proposed budget. Unfortunately, not included in the 2014 budget was the Port-A-Potty rental fee. It was decided by the Commissioners that due to the abuse of the Port-A-Potty it would be removed. Sorry to say that again the non-responsible 1% has spoiled a good thing for the rest of the folks.

I would like to take this opportunity to thank Peg and Phil Holmann for their many years of volunteering their time to the Lake District. As we all know Peg was our Treasurer for many years and Phil was our lead man with the aeration system. As a result of the Hollmann's moving out of the District and out of the township we need to find someone to run the aeration program. I have asked Phil for a list of his duties involved in the system. I do know that the system needs to be checked during the winter months and requires startup

fencing, fencing take down and shut down. The system also needs to be watched for unseasonal weather changes. This may require someone who is a permanent resident or someone connected to someone who is a resident. The aeration program is a very important one that we have operated for several years. If we can't find someone to take the lead role we will have no choice but to shut the system down. PLEASE consider volunteering for this job!!

As a reminder the Fall L/D meeting will be on Saturday, August 31, 2013 at the Nashville Community Center and Town Fall meetings are always important as we discuss the next year's budget, fish stocking and other Lake District issues. Please see the enclosed agenda for the areas of discussion. Also attending this meeting will be Ms. Molly McKay. She is a shoreland restoration specialist with a great idea of how to restore the shore but in a way that attracts birds, animals, etc. She is very interesting and practical. You don't want to miss her presentation. See you at the meeting.

Have a safe and enjoyable fall,

Chuck Sleeter



Forest County Association of Lakes (FCAL) Request

FCAL is an educational and research group that was organized to bring the different Lake Districts together to protect Forest County inland water bodies, environs and watershed for now and future generations, including, but not limited to: aesthetic beauty, water quality, wildlife habitat and fisheries. For the past few years, our lake has been represented by Peg Hollman, but she has recently resigned. It is important for Pickerel/Crane lake to have someone be a part of this group. This is a great way to learn about the lakes that we all love and help to preserve them for future generations. The commitment level is very small. There are one - two meetings per year. Please look at their website at fcalfwi.org to check out what they do. If you would like to represent our lake at these meetings, please call Chuck Sleeter at 715-484-3226.

Aeration News

Each winter, the Lake District runs and monitors an aeration system that helps with the oxygen level during the heavy ice periods of winter. Ever since this system was put into use, we have experienced very little spring kill. Since it can take three years to recover from a severe fish kill, our lakes have benefited greatly from this program. Hollman has been running this equipment, but needs to resign. Here are a list of the job responsibilities:

- When ice is safe, drill holes, insert stakes, attach rope and reflective material around area to be aerated.
- Call Duane Anderson to steam the lines until they are clear of ice.
- Start the blowers.
- After you have significant open water, you can turn off 1 of the 2 blowers.
- Check the system every couple days to make sure the system is running OK and not opening water beyond the fence.
- At ice out, retrieve stakes.

For more information or to volunteer, please call Chuck Sleeter at 715-484-8166.

Port-a-Potty Removal

For the past few years, the Lake District has provided a port-a-potty at the North Shore boat landing. Unfortunately, there has been repeated abuse of the equipment by people dumping their garbage or dirty diapers in the tank. The tanks are designed to break down solid waste, not garbage, and we were notified by the company providing the equipment that the misuse of the toilets were breaking his equipment. The decision was made to remove the port-a-potty.

Lake District Website

Our Lake District sponsors a web page for Pickerel and Crane Lake. Here, you will find archive copies of the newsletter, District meeting minutes, and any information that needs to be passed along in between newsletter mailings such as the big fish give away next spring! (See the article below for information.)
www.pickerelcranelakedistrict.org

Bullhead Removal From Pickerel Lake

As part of our Walleye Restoration Program, the DNR agreed to remove bullheads from Crane Lake. They removed 8,345 bullheads for a total of 5,899.5 pounds. DNR biologist, Greg Matzke was so pleased with the results of this process that he is trying to arrange a similar removal of bullheads next spring in Pickerel Lake. Bullheads have a voracious appetite for small fry which is believed to have a direct impact on the reproduction of the other species of fish in the lake. Because of the size of Pickerel Lake, Mr. Matzke is guessing that there will be over 15,000 pounds of bullheads removed next spring. These fish will once again be made available to any stakeholder who comes to the removal site. The date will be announced on the Lake District website, www.pickerelcranelakedistrict.org. It will be approximately four weeks after ice out. Be sure to keep an eye out for this free event. Rod Sternhagen has been enjoying his bullheads all year with this recipe.

Poor Man's Lobster

½ c. sugar
¼ c. salt
2 quarts water

Skin and filet bullhead. Bring all ingredients to boil. Drop fish in for 1 minute. Remove from heat and cover for 20 minutes. Serve with drawn butter.

Notice of Pickerel/Crane Lake P&R

District Fall Meeting

August 31, 2013 - 9:30 a.m.
Nashville Town Hall
1038 County Hwy. Q, Pickerel

Agenda

1. Call to Order/Roll Call/Pledge of Allegiance
2. Reading of the Spring Meeting Minutes
3. Treasurer's Report
4. Old Business
 - a) Aeration report/discussion on replacing Phil Hollman
 - b) 2013 Aquatic plant harvesting report
 - c) New donation boxes at landings
 - d) 2013/2014 Fish stocking report
 - e) Clean Water/Clean Boats update
 - f) Discuss filling in power loading holes at boat landing
 - g) Consider placing more "No Power Loading" signs at docks
 - h) Bullhead removal results on Crane Lake
 - i) Invasive plant chemical treatment on Lake Elwood
5. New Business
 - a) Discuss bullhead removal on Pickerel Lake in 2014
 - b) Crane Lake fall walleye survey
 - c) Budget hearing/ adoption of tax levy
 - d) Removal of Port-a-potty from Pickerel lake
 - e) Shoreland Resoration presentation with Molly McKay
6. Election of three Commissioner (Chuck Sleeter, Kathy Kupfer, and Dan Vosters)
7. Public Comment
8. Adjourn
(Two members of the Nashville Town Board may be in attendance.)

PROPOSED BUDGET FOR 2014

Notice is given that the Pickerel/Crane Lake P&R District will conduct a hearing on the proposed budget for 2014 and adopt a tax levy at the annual meeting September 2, 2013.

Expenditures	2013 Budget	2014 Proposed Budget
Printing/Ads	400	100
Webpage/Newsletter	100	500
Postage	1,000	1,100
Administrative	200	200
Meetings/Mileage/Phone	500	500
Dues	100	100
Insurance	2,500	2,500
Lake Monitoring	500	500
Boat Landings	800	2,000
Aeration	2,000	2,500
Weed Harvesting	3,000	5,000
Capital Purchases	3,400	8,500
Lake Management Plan	15,000	-0-
Office Rent	3,000	3,000
Misc.	500	500
Walleye Restoration Project	7,500	8,500
Total	\$40,500	\$35,500

Revenues	2013 Budget	2014 Proposed Budget
Tax Levy	\$27,800	\$27,800
Interest	1,500	1,100
Boat Landing Donations	200	200
Lake Man. Plan Grant	8,500	5,900
Lake Monitoring Reserve	500	500
Harvester Reserve	2,000	-0-
Total	\$40,500	\$35,500

***2014 Approved Tax Levy \$27,800**

Percentage of Change: 0%

A detailed copy of the budget may be obtained from the Treasurer, Kathy Kupfer at 262-255-0174

Pickerel/Crane Lake District Commissioners & Representatives

Chuck Sleeter – Chair (715) 478-1038 or (715) 484-4501
email: nashchair@frontier.com

Rod Sternhagen – Vice Chair (920) 540-4507

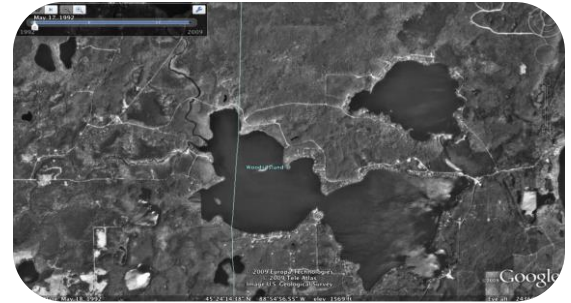
Dan Vosters – DNR Rep. (715) 484-3142 or (920) 766-9202

Kathy Kupfer – Treasurer (262) 255-0174

Lauren Freston – Secretary (715) 701-0066
email: lafreston@yahoo.com

Duane Marshall – Town of Nashville Rep. (715) 484-8198

Jim Stormer – Forest County Liaison (715) 484-2022



Pickerel/Crane Lake
www.earth.google.com

In order for us to keep our mailing list current, please notify us of your new address if you move. It would also be helpful if you would let us know the name and address of the new owners in the event your property is sold, so we can include them in our mailings. Thank you.

Pickerel/Crane Lake P&R District

P.O. Box 18
Pickerel, WI 54465

[Recipient]