

PICKEREL/CRANE LAKE P&R DISTRICT

Protection and Rehabilitation District

Newsletter



From the Chairman's Desk...

I'm not sure about you, but it seems to me that summer just got started and now fall is right around the corner. I would like to bring you up to speed on some of the projects that your Lake District has been involved with this season.

Approximately three weeks after ice out on Pickerel Lake, Greg Matzske from the WDNR and the Sokaogon Chippewa fishery staff began the 2014 Bullhead extraction on Pickerel Lake. With the help of Jim Huss and other volunteers, all the Bullheads were used for human consumption and none went to waste. The event was another great success.

After the extraction was completed, the weed harvester was transported to Pickerel Lake. As of this writing only about 8 loads of weeds have been removed from the lake. Some folks believe that the long harsh winter, cool temperatures, and lack of sunshine have slowed the aquatic plant growth. Therefore our weed harvesting activity has been very slow this summer.

An important part of our weed harvesting program is the hauling of weeds from the lake to Jim Huss's land. At the Spring Lake District meeting the voters indicated that we should look for a newer used weed hauler truck. I then began to look for a replacement but found this would be harder than we had expected. The underlining issues are that the truck needs to have an automatic transmission so that most volunteers could operate it; the truck needs to have a gross weight of 26,000 lbs. so that our volunteers would not have to get a Wisconsin commercial truck driving

license and it also has to have a diesel engine for fuel economy. I soon discovered that the type of vehicle we needed was in demand by everyone and that folks that had them kept their trucks until they were pretty well used up. With the help of Steve Bailey the search began and we located a 1999 Ford F650 and purchased it knowing it needed some minor repairs. We are now arranging for these repairs and it should be on the road soon.

As long as we are on the subject of weed harvesting, please know that we are still in desperate need of a volunteer weed boss. Please consider volunteering. Jim Huss will train you and assist you until you can take over. Please give it a try.

I am very pleased to inform you that two very important volunteer positions have been filled this summer. The aeration boss position has been filled by Jerry Hietpas of Waters Edge Custom Woodworking and he will be assisted by Al Meier from Final Lap. The lake water sampling position was filled by Commissioner Dan Vosters. If you see these volunteers please be sure to thank them! We really appreciate their service to our lake community. Speaking of volunteers, this summer we were asked by Greg Matzske if we would watch for Bullhead fry that start to form Bullhead pods or balls and to net them for removal from Crane and Pickerel Lakes. We purchased 5 nets and the following volunteers received permits to net; from Pickerel Lake Sally Ferguson, Jim Huss and myself; from Crane Lake Rod Sternhagen and Ken Olson.

Thanks again for volunteering!

At the spring meeting members asked to have "No Power Loading" signs installed at our boat landings. We were able to get them purchased and installed in July. Let's hope people will read the signs and not steal them again. Also, maybe you noticed that each dock now has a terrific donation box that were built and installed by our great volunteers. Thanks again!

Finally, please try to attend the Fall Annual meeting on Saturday, August 30, 2014. Of the two meetings we have each year I think this is the most important. Two of our Commissioner positions are up for election so if you think the Lake District needs some changes or you just want to get involved this is your chance. At this meeting we also discuss and vote on the 2015 budget. Here is your opportunity to comment on how your tax dollars are being spent. Looking for ways to control spending is always a challenge, which is why our volunteers are so important to keeping our Lake District functioning at such a high level while keeping costs at a minimum. I have been Chairman for 18 years now and we have not had to increase the Lake District tax levy during that time, and thanks to all of our hard working volunteers and commissioners we do not foresee an increase in 2015. This is a Lake District we can all be proud of!

See you at the meeting,

Chairman
Chuck Sleeter

A Big Thank You!

We'd like to extend a great big thank you to Ken Verhagen for building our new metal donation box located at the Crain Lake boat landing and to Len Hadovski for spearheading the project. We also thank Fox Valley Tool & Die for donating the materials. This is a beautiful addition to the boat landing.

The money collected from each donation box is truly appreciated and helps pay for the upkeep of the boat landings. This year repairs were needed due to boats using the



power loading method to launch boats (see article below).

Thanks again to our Lake District members who volunteer their time and talents. You are much appreciated!

Think Snow! ? !

After last year's brutal winter, I don't know anyone who is yearning for winter to return, but at least we have lots of winter lake activities to enjoy on the lake during every season. Between ice fishing, snowmobiling, cross country skiing, and of course the Valentine's weekend Jump in at Schuh's, both Pickerel and Crane Lake offer a lot of fun activities throughout the winter. Be sure to take advantage of all the lake has to offer throughout all the seasons. Have a fun and safe winter!

Lake District Website

Our Lake District sponsors a web page for Pickerel and Crane Lake. Here, you will find archive copies of the newsletter, District meeting minutes, and any information that needs to be passed along in between newsletter mailings.

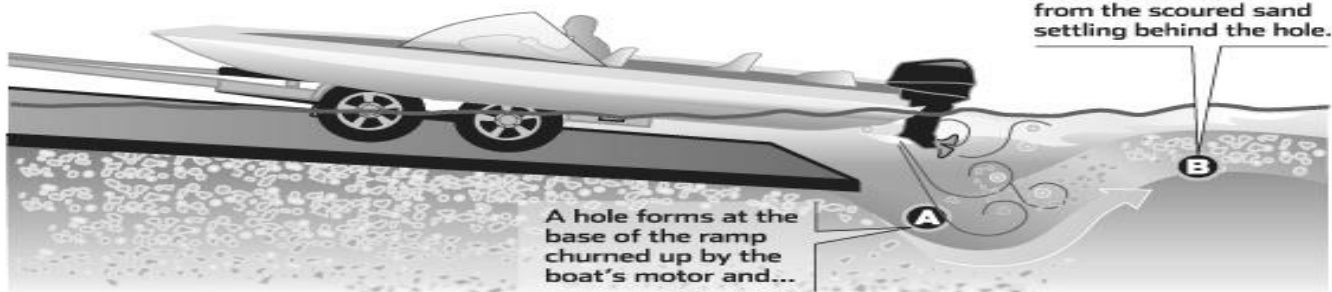
www.pickerelcranelakedistrict.org

The Dangers of Power Loading Boats

Power loading boats seems to be an effortless way to get a boat onto a trailer; however, it is a practice that has caused many problems for public boat ramps throughout the country. The problem comes from using the motor to thrust the boat onto the trailer. The strong current created by the boat's propeller causes severe erosion and washes out the end of the ramp. These large holes that are dug at the base of the ramp also pushes sediment up and creates a mound behind the trailer tires and boats can run aground when these conditions exist. This seemingly convenient way to load boats is actually causing damage to boats and our landings.

Boat ramps and 'power loading'

The practice causes a scouring of the lake bottom at the ramp's base.



Source: Minnesota Department of Natural Resources Information Center

PIONEER PRESS

Notice of Pickerel/Crane Lake P&R

District Fall Meeting

Aug. 30, 2014 / 9:30 a.m.

Town of Nashville Community Center & Office

1038 County Rd. Q

Pickerel, WI

Agenda

1. Call to Order
2. Pledge of Allegiance
3. Greet New Members
4. Reading of May 24, 2014 Meeting Minutes
5. Treasurer's Report
6. Old Business:
 - (a) Aeration Report/Jerry Hietpas & Al Meier Volunteer to Replace Phil Hollmann
 - (b) 2014 Aquatic Plant Harvesting Update
 - (c) Donation Boxes at Boat Landings
 - (d) 2014/2015 Fish Stocking Report by Brad Kupfer
 - (e) "No Power Loading" Signs at Docks Installed
 - (f) Update on 2014 Bullhead Extraction on Pickerel Lake and Donation to WDNR
 - (g) Update on Bullhead Fry Netting on Crane and Pickerel Lakes
 - (h) Volunteer Needed for Weed Boss Position
 - (i) Dan Vosters Volunteers to Replace Phil Hollmann as Lake Water Sampler
7. New Business
 - (a) WDNR Greg Matzke Proposed 2015 and 2017 Walleye Stocking in Crane and Pickerel Lakes
 - (b) Discuss Increasing the Mileage Rate for Required Volunteer Travel
 - (c) The Purchase of Newer Weed Hauling Truck
8. Budget Hearing/Adoption of Tax Levy
9. Election of Commissioners
10. Public Comment
11. Adjourn

Immediately after the Annual Meeting there will be a commissioners meeting to determine commissioners duties.

(Two or more members of the Nashville Town Board may be in attendance.)

PROPOSED BUDGET FOR 2015

Notice is given that the Pickerel/Crane Lake P&R District will conduct a hearing on the proposed budget for 2015 and adopt a tax levy at the annual meeting August 30, 2014.

Expenditures	2014 Budget	2015 Proposed Budget
Printing/Ads	100	50
Webpage/Newsletter	500	500
Postage	1,000	500
Administrative	200	200
Meetings/Mileage/Phone	500	500
Dues	100	100
Insurance	2,500	3,500
Lake Monitoring	500	500
Boat Landings	2,000	1,000
Aeration	2,500	2,500
Weed Harvesting	5,000	5,000
Capital Purchases	8,500	3,450
Office Rent	3,000	3,000
Misc.	500	500
Walleye Restoration Project	8,500	7,500
Total	\$35,400	\$28,800

Revenues	2014 Budget	2015 Proposed Budget
Tax Levy	\$27,800	\$27,800
Interest	1,100	800
Boat Landing Donations	200	200
Private Donations	-0-	-0-
Lake Mangt. Plan Grant	5,900	-0-
Lake Monitoring Reserve	500	-0-
Harvester Reserve	-0-	-0-
Total	\$35,500	\$28,800

***2015 Approved Tax Levy \$27,800**

Percentage of Change: 0%

A detailed copy of the budget may be obtained from the Treasurer, Kathy Kupfer at 262-255-0174

Pickerel/Crane Lake District Commissioners & Representatives

Chuck Sleeter – Chair (715) 478-1038 or (715) 484-4501
email: nashchair@frontier.com

Rod Sternhagen – Vice Chair (920)540 -4507

Dan Vosters – DNR Rep. (715) 484-3142 or (920) 766-9202

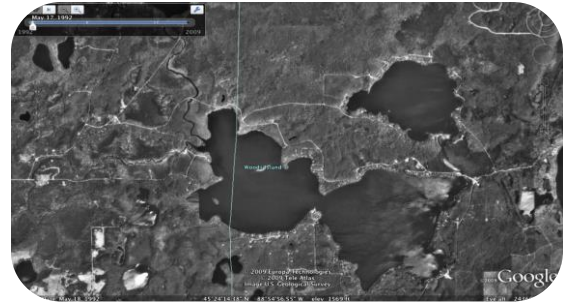
Kathy Kupfer – Treasurer (262) 255-0174

Lauren Freston – Secretary (715) 701-0066
email: lafreston@yahoo.com

Duane Marshall – Town of Nashville Rep. (715) 484-8198

David Solin – Langlade Co. Liaison (715) 627-4221 or (715) 610-6241

Jim Stormer – Forest County Liaison (715) 484-2022



Pickerel/Crane Lake
www.earth.google.com

In order for us to keep our mailing list current, please notify us of your new address if you move. It would also be helpful if you would let us know the name and address of the new owners in the event your

Pickerel/Crane Lake P&R District

P.O. Box 18
Pickerel, WI 54465

[Recipient]