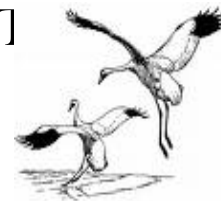




# PICKEREL/CRANE LAKE P&R DISTRICT

Protection and Rehabilitation District

Newsletter



## From the Chairman's Desk...

I'm sure you are happy that this long and harsh winter is finally coming to an end. Unfortunately, as a result of the extreme low temperatures accompanied by the large amount of snow and length of the winter, we are looking at the possibility of a major winter fish kill in Pickerel Lake and in some of the shallow areas of Crane Lake.

I recently spoke with WDNR fish biologist, Mr. Greg Matzski regarding the chance of winter fish kills and he indicated that there was a major concern about the kill in any shallow lake and on any water body having shallow areas. But Greg also indicated that lakes that have winter aeration stand a better chance of avoiding a major kill but could see some fish kill. He asked if our system was still being used and to what extent, as systems that were only operated part-time may see major kills, but systems that had operated like ours may "dodge the bullet."

With that being said, if we do "dodge the bullet" this winter, we all owe it to Mr. Phil Hollman. I have spoken previously about Phil moving off the lake and, therefore, wanting to give up operating the aeration system for the last year. So far, we have not been able to fill this position. Fortunately for all of us, Phil stayed with the operation of the system for this terrible winter, but we need to find someone to step up and take over. Phil has operated the system since the day we installed it, and that was many years ago. We have not had a major winter kill since he was in charge of the system, and we owe him a BIG THANK YOU!

who will be responsible for the aeration system. The requirements require someone who is in the area during the winter months and can routinely check the system during the winter. Phil indicated he would help out and give advice. Please consider helping out as you can see that the operation of the system is critical to the survival of our fish.

For some better news, Mr. Matzski notified us that two to three weeks after ice-out Greg, his staff, and the staff from the Mole Lake Sokaogon Chippewa Fisheries Department will be conducting a bullhead extraction on Pickerel Lake. They will be placing 40 to 50 nets around the shoreline and expect to catch between 30,000-40,000 bullheads. If you recall last year the WDNR conducted the bullhead extraction on Crane Lake and with the help of Mr. Jim Huss all the bullheads were given to folks for human consumption and not wasted. We are going to try to pull this off again this spring. If you would like to help out with the extraction and want to pick up some bullheads, please contact Mr. Huss at 715-484-3406 (home), 715-216-2453 (cell) or me. As an additional note, the WDNR will be placing a few nets in Crane Lake to see if they can net any bullheads and if so how many. **Please, we are asking everyone to be patient with the WDNR bullhead nets that will be placed near shore around Pickerel Lake. This is an effort that involves the WDNR, Sokaogon Chippewa Fishery staff, Pickerel/Crane Lake District, and many volunteers from the area. We see this as a very positive effort for the lake and please, be courteous and helpful.**

For more good news, Greg indicated he was able to acquire 16,500 seven to eight inch walleyes from the WDNR ponds for our lakes in 2015 and 2017. He indicated that the WDNR only stock on odd numbered years which explains the 2015, 2017 sequence. This is great news for our lakes and a money saving opportunity for us. His goal is to hit a ten walleye per acre level in Crane Lake. Please keep in mind this is only happening due to the Crane Lake bullhead extraction, the follow through and Greg's dedication to seeing Crane and Pickerel Lakes support a healthy fish population. We all need to thank Mr. Greg Matzski, his staff, and the WDNR for their continued support.

Please keep in mind one of the chief elements that plays into who gets fish stocking and who doesn't is water quality. You may wonder how this data is gathered. Well, to make this short and to the point, our water quality is based on samples collected by our volunteers, one of whom is Phil Hollman. Phil has also resigned from that position, and we need to have someone volunteer to take that job. Phil will also help you get started and assist. His replacement does not need to be on the lake during the winter. If you are able to help with water sampling or aeration, please call Phil at 715-484-7800 or me at 715-219-0835.

As far as volunteerism is concerned, I have found that we (Continued on Page 2)

*Generous Award from the  
Sokaogon Chippewa Community!*

The Pickerel Crane Lake Protection and Rehabilitation District would like to send a great big thank you to Michael Preul, Fisheries Biologist for the Sokaogon Chippewa Community who has awarded \$5,000 to our lake district from the tribe. We are grateful for the continued help that the Chippewa Tribe continues to give us. We will make sure that this money goes towards protecting and improving the two lakes we all love.

.....

**Can Anglers Accidentally Introduce Asian Carp?**

As anglers purchase bait to fish with, there is a chance that Asian carp can sneak into the regular minnows that are harmless to our waters. Common bait are Gizzard Shad, Emerald Shiner, Spottail Shiner, and a Golden Shiner. The dangerous breeds are Bighead Carp and Silver Carp. Large scale bait companies will net minnows and sell them for public use. There is always the potential danger of an Asian Carp slipping into the bait anglers unwittingly introduce into their favorite fishing spots. The angler will be the final defense for protecting our waterways.

The fisheries Division in collaboration with the Aquatic Invasive Species (AIS) core team and the Michigan out-of-doors TV has developed and produced an education and outreach video that focuses on identification of juvenile Asian carp. The overall message of the video is to increase awareness of a potential pathway for the introduction of these detrimental invasive species that the common angler can relate with. This is a quick video that will teach you how to identify the types of minnows that won't hurt our lakes. You can find this video at the link below or search for "Juvenile Asian carp identification" on YouTube. <http://www.youtube.com/watch?v=tekJq3L0gPA&>

**Aeration System Request**

As you can see from the severe weather we had this year, the aeration system is an essential need for the health of the fish in our lake. Please consider volunteering to fill this position. See "From the Chairman's Desk" for more information. You may volunteer either by calling Chuck Sleeter at 715-478-1038 or by signing up at the spring meeting.

.....

**WEED BOSS NEEDED**

It is no surprise to anyone that we fight weeds all summer long. We are lucky enough to have a harvester that is prepared to make your docks accessible to open water. However, we need someone to volunteer to head up the scheduling / training of our volunteers. This position is also heads up making sure the harvester is put in the water in the spring and taken out in the fall as well as monitor any maintenance needs that may arise. You do not have to live on the lake to volunteer. We need you! Please call Chuck Sleeter at 715-478-1038 ASAP!!

**From the Chairman's Desk (Cont'd from Page 1)**

are in the same position that a lot of Lake Districts are in when it comes to the lack of volunteers. Folks, in the past our lake community has always stepped up, and we were able to have the programs that make our lakes healthy and our Lake District was admired by other folks throughout the state. It is also due to our volunteers and their dedication that we have been able to acquire lake grants and funding for the equipment we now have. Please try to help out. We need you!

Finally, our lake community has lost two members this spring. Longtime residents Jerry Schuh and Dorothy Tyra have passed away and will be remembered as folks who loved our lakes and our community and worked hard to protect and preserve our environment. Jerry was always a strong supporter of the Lake District and assisted us with many of our programs and projects. Dorothy was also a strong supporter of the Lake District and dedicated many years of her life fighting the Crandon Mine and was also involved in any issue that was a threat to our lakes. Both of these folks will be greatly missed by our lake community. This leaves us to carry on their good work.

Have a great spring and safe summer and remember to attend the spring meeting on May 24, 2014 at 9:30 am at the Nashville Community Center located at 1038 County Highway "Q" in Pickerel.

See you soon,  
Chuck Sleeter

**Notice of Pickerel/Crane Lake P&R  
District Spring Meeting**

May 24, 2014 - 9:30 a.m.  
Nashville Town Hall  
1038 County Road Q, Pickerel

**Agenda**

1. Call to Order
2. Pledge of Allegiance
3. Greet New Members
4. Reading of Fall Meeting Minutes
5. Treasurer's Report
6. Old Business:
  - (a) Aeration report and replacing Phil Hollman on the aeration and water sampling duties.
  - (b) 2014 Aquatic Plant Harvesting update and possible dead fish pickup
  - (c) Update on donation boxes at landings
  - (d) 2013/2014 Fish stocking report by Brad Kupfer
  - (e) Clean Water Clean Boats update with John Preuss
  - (f) Consider placing more "No Power Loading" signs at docks
  - (g) Spring of 2014 Bullhead extraction on Pickerel Lake
7. New Business:
  - (a) Presentation from Mr. John Preuss Aquatic Invasive coordinator
  - (b) Possible 2013/2014 fish winter-kill on lakes
  - (c) WDNR request for donation to complete the Bullhead extraction on Pickerel Lake
  - (d) WDNR Crane Lake fall Walleye survey results
  - (e) WDNR Greg Matzke proposed 2015 and 2017 Walleye stocking in Crane and Pickerel Lakes
  - (f) \$5,000 donation from the Sokaogon Chippewa Community
  - (g) Need volunteer to fill the Weed Boss position
  - (h) Appoint nominating committee
8. Public Comment
9. Adjourn  
(Two or more members of the Nashville Town Board may be in attendance.)

**Clean Boat/Clean Water Training**

Clean Boat/Clean Water is a community-based way we can protect our waters from invasive species. The best way to do this is by educating the public as they launch their boats. This is a low stress volunteer opportunity for you to visit the boat landing of your choice whenever you are able and talk to the people as they launch their boats. You will have brochures that explain the importance of following the established guidelines for launching your boat into Wisconsin lakes. Training is being provided in Forest County at the Crandon Public Library on Lincoln County will also have a training on May 9<sup>th</sup> at the Tomahawk Senior Center from 5:00 - 7:00 pm. Please contact John Preuss email him at johnpreuss@frontier.com or phone him at 715-369-9886 to reserve your spot.

.....

**To Volunteer or Not to Volunteer,  
That is the Question**

This newsletter has many requests for you to step up and volunteer. I want to make a personal plea to ask you to consider the various requests. We are the benefactors of selfless people who have given of themselves to ensure that we have a great lake. It is now your turn to ensure that our lakes stay healthy for the next generation!

**Summer Lake Etiquette**

After the long and cold winter we have had, most of us are beginning to long for warm days on the lake. Of course our goal is to have fun but to stay safe as well. The DNR has lots of good advice at [dnr.wi.gov](http://dnr.wi.gov) to see all the boating requirements. On top of the requirements of all boaters having an approved flotation advice, it is imperative that boaters follow the rule that states that reckless driving includes jumping the wake of any vessel that is towing a person on water skis, inner tube, wakeboard, etc. It also includes driving fast enough to create a wake within 100 feet of the shoreline. This is roughly 1/3 of a football field. Of course, weaving your vessel around other watercraft or steering towards another object or person and then swerving at the last possible moment is also reckless driving. In addition, chasing, harassing, or disturbing wildlife with your vehicle is also illegal. If you see any of the above behavior, you may call the DNR directly at 1-800-TIP-WDNR or text directly #367. Please take the time to review the law on the DNR website and ensure that we all have a great summer on the water!

---

## Pickerel/Crane Lake District Commissioners & Representatives

Chuck Sleeter – Chair (715) 478-1038 or (715) 484-4501

Rod Sternhagen – Vice Chair (920) 540-4507

Dan Vosters (715) 484-3142 or (920) 766-9202

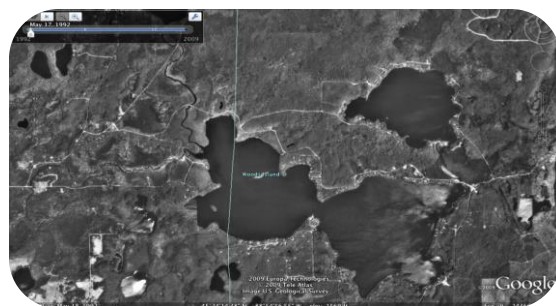
Kathy Kupfer – Treasurer (262) 255-0174  
email: kathykupfer@wi.rr.com

Lauren Freston – Secretary (715) 701-0066  
email: lafreston@gmail.com

Duane Marshall – Town of Nashville Rep. (715) 484-8198

Jim Stormer – Forest County Liaison (715) 484-2022

Dave Solin – Langlade Co. Liaison (715) 627-4221 (715) 610-6241



*Pickerel/Crane Lake*

[www.earth.google.com](http://www.earth.google.com)

---

*In order for us to keep our mailing list current, please notify us of your new address if you move. It would also be helpful if you would let us know the name and address of the new owners in the event your property is sold, so we can include them in our mailings. Thank you.*

---

---

Pickerel/Crane Lake P&R District

---

P.O. Box 18

Pickerel, WI 54465

[Recipient]