

AMEA Services UK Completes Hydraulic System Upgrade

REPLACEMENT CONTROL PANEL BUILT AND SHIPPED

Build taken place at AMEA Services HQ and shipped.

DRAWINGS AND PLC PROGRAM SUPPLIED

Full drawing schematic, parts list and copy of PLC program issued to customer upon completion.

INTEGRATION INTO AUXILIARY EQUIPMENT AND CONTROLS

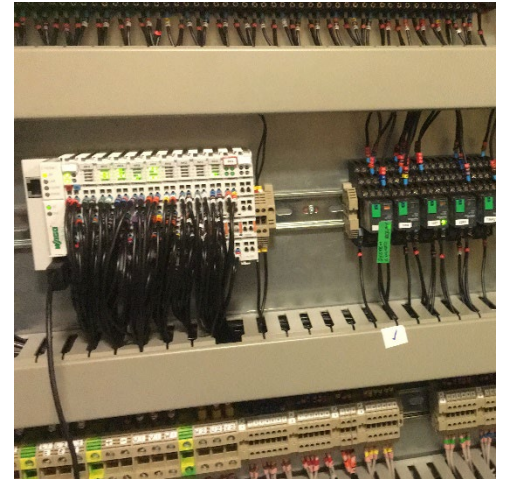
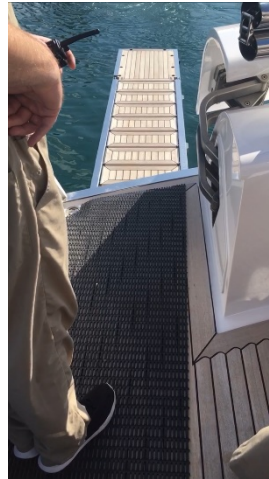
Existing user control inputs/outputs and radio controls re-utilised within main control panel.

SITE ACCEPTANCE TEST PERFORMED

Documented site testing procedure adhered to and followed.

EXCELLENT CUSTOMER FEEDBACK

Customer feedback questionnaire detailed 100% satisfaction.



A customer had a problem whereby their PLC in their aft hydraulic control system had a number of issues. The panel controls the passarelle, stern door and lazarette crane. A number of inputs had failed and there were intermittent problems causing the crew to have to manually operate the hydraulics. Due to the condition of the aforementioned PLC and the run-down nature of the main panel, it was agreed that the panel should be replaced in its entirety.

AMEA Services were able to design a replacement main control panel utilising more modern components and 'off the shelf items'. The original operational philosophy was to remain unchanged.

A replacement panel was built at AMEA premises in the UK and shipped to the customers site. The original panel was carefully removed with all connections documented before installation of the replacement. During commissioning a 'site acceptance test' document was followed and all aspects including alarms were demonstrated to ships staff.

Upon successful handover, all technical documents were provided to the client in a prompt and professional manner.



Unit 107 Summers Road,
Brunswick Business Park,
Liverpool,
United Kingdom,
L3 4BL