









Focusing on quality and integration and using materials such as polished steel, marble and granite the architects developed an essence in the building which reflects its true statement as one of the finest corporate structures in Sydney. 20 Hunter Street represents a unique opportunity to expand your business profile and relocate to the heart of Sydney's financial core. With modern A-Grade services, 20 Hunter Street offers a unique opportunity with flexible, light-filled workspaces in a contemporary building that has recently been extensively upgraded to a luxurious standard.

20 Hunter Street is close to major transport hubs such as Wynyard Station, the Carrington bus interchange and the Circular Quay ferries. Restaurants and food courts, as well as childcare, gyms and retail shopping are at your doorstep.

-  A Grade Building
-  5 Star NABERS
-  Basement Parking
-  End Of Trip Facilities
-  Lobby café on Ground
-  Fitted-out Spaces

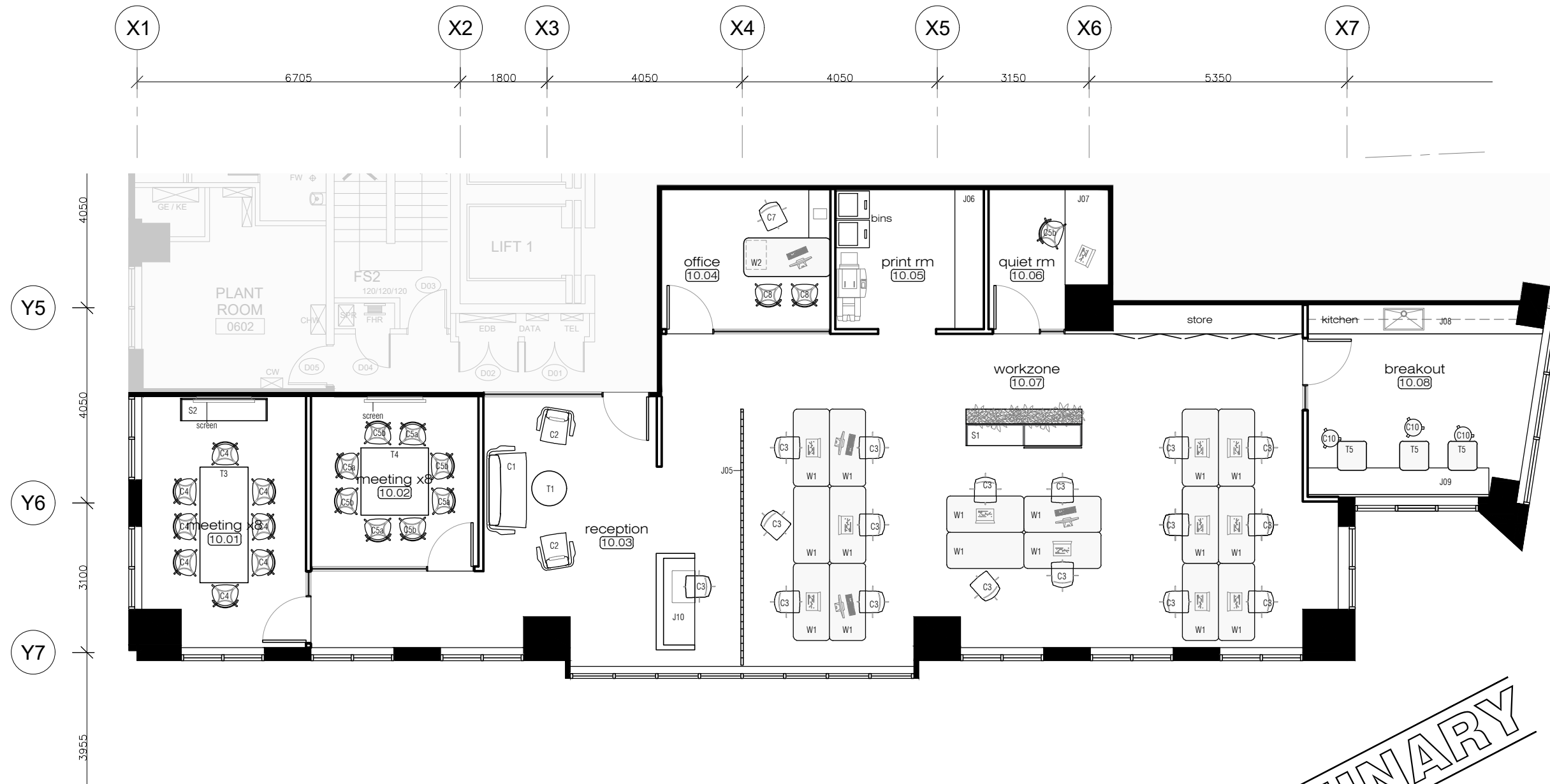
For more information, please contact:

Thomas Fredriksen
Director - Office Leasing
+61 4 0003 0003
thomas@onyxcommercial.com.au

| Level / Suite | Area (m ²) | Rent (psm ²) | Outs (psm ²) | Available | Fit- Out | Comments |
|---------------|------------------------|--------------------------|--------------------------|-----------|----------|---|
| Suite 10.02 | 161.0 | \$1,275 Net | \$212.25 | Sep 2022 | Yes | High quality existing fitout comprising reception / waiting area, boardroom (8 pax), meeting room (8pax), 1 x office, 16 workstations, quiet room, printer and storage room, kitchen / breakout area. Refer fitout plan attached. |

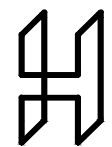
GENERAL NOTES:

- ALL DIMENSIONS ARE APPROXIMATE ONLY - CONFIRM ON SITE.
- TO BE READ IN CONJUNCTION WITH FINISHES AND EQUIPMENT SCHEDULE



| | | | |
|-------------------------------------|---------------------------|---|---|
| drawing no: ID-10 | issue no: a | drawing title: FURNITURE & JOINERY PLAN L10 | project: HUNTER STREET FIT OUT LEVEL 10, 20 HUNTER STREET |
| status: FOR PRELIM TENDER | scale: 1:100@A3 | date: 24.04.2018 | drawn: VM |
| | | approved: TH | |

HAMMOND STUDIO PTY LTD
 email : hello@hammondstudio.co
 address : level 1, 82 george st, redfern



contractor to verify dimensions on site prior to commencement of work. report all discrepancies to project manager use dimensions over scaling. this drawing is subject to copyright and may not be used or reproduced without permission from HAMMOND STUDIO PTY LTD