



Precision Radionuclide Therapy™ (PRnT)

Safe

IsoPet® delivers more than 90% of its therapeutic radiation within 10 days of a single treatment. Other therapies may require six weeks or more to deliver the full course of radiation therapy.

Same Day

IsoPet® is performed as an out-patient procedure and your pet may return home without subsequent concern for radiation exposure to your pet or family.

Side Effects

IsoPet® is administered directly into the tumor without harm to the surrounding tissues or organs. Your pet will feel minimal, any side effects of treatment.

Next Generation Cancer Treatment for Your Pet.

IsoPet®'s Precision Radionuclide Therapy™ is a safer cancer treatment for small and large animals.

Is your pet a candidate?



Before
Soft Tissue
Sarcoma



After
8 Weeks Post
Treatment

Brew, an 11 year old Labrador suffered from an aggressive soft tissue sarcoma. He avoided limb amputation and is a two year cancer survivor.



www.IsoPet.com

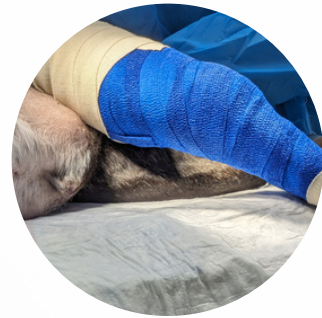


Next Generation Cancer Treatment for Animals

What is Precision Radionuclide Therapy™ ?

Precision Radionuclide Therapy (PRnT)™ is an yttrium-90 (90Y) based injectable device for the treatment of cancerous tumors in animals.

IsoPet® uses highly localized radiation to destroy, cancerous tumors by placing a radioactive isotope directly inside the treatment area using the company's patented and proprietary hydrogel technology.



A sterile, composite injection solution:

The future of brachytherapy cancer treatment - the insertion of our radionuclide device directly into the tumor tissue without harm to outside tissues or organs.

IsoPet® is injected directly into target tumor tissue, where it perfuses interstitial spaces, solidifies at body temperature, and confines the radioactive ⁹⁰Y-particles within the target tissue.

IsoPet® delivers therapeutically effective, physician-prescribed radiation dose with no concern for exposure to external tissues, your pet or your family.

IsoPet® has been studied as a compelling and safer alternative to conventional radiation therapy, also known as External Beam Radiation Therapy.

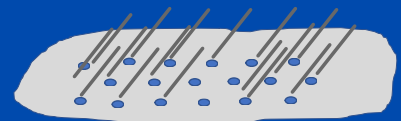
Clinical data from studies in cats and dogs show that IsoPet® can be prepared and administered safely by direct interstitial injection, resulting in high localized doses and effective destruction of tumor with no significant side effects. IsoPet® is a single same day treatment with a high therapeutic dose and minimal collateral damage.

Fisher DR, Fidel J, Maitz CA. Direct interstitial treatment of solid tumors using an injectable yttrium-90-polymer composite. Cancer Biother Radiopharm. 2019 Oct 17. doi: 10.1089/cbr.2019.2947.

How IsoPet® works...

Parallel Needle Injections

IsoPet® is placed into the tumor by continuous injections as the needle is withdrawn. Minimal dose to adjacent healthy tissue.



IsoPet® is in collaboration with distinguished veterinary research centers across the United States.



IsoPet®

A revolutionary cancer treatment for animals through our certified IsoPet® veterinarian clinics across the USA.

IsoPet® and Precision Radionuclide Therapy™ are internationally registered trademarks of Vivos Inc.