

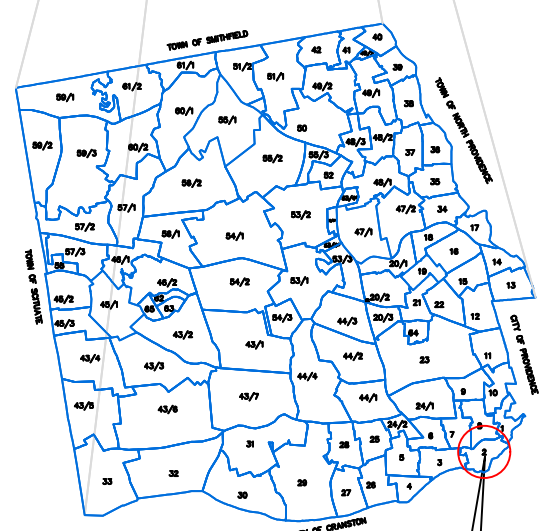
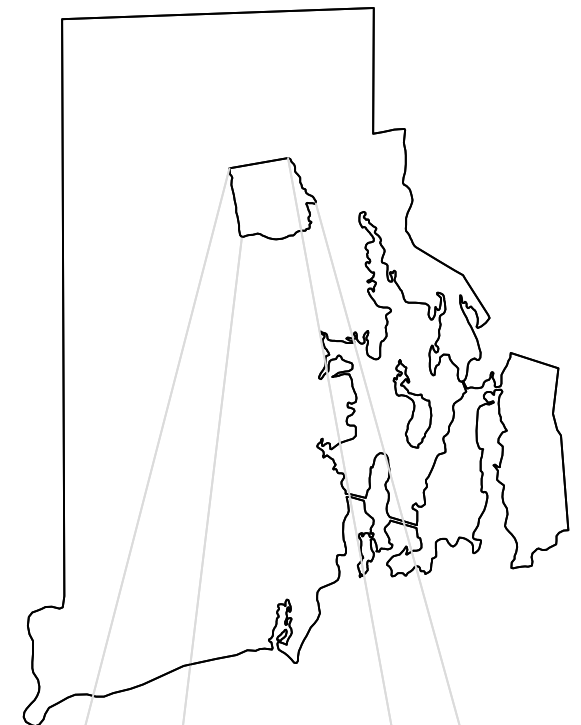
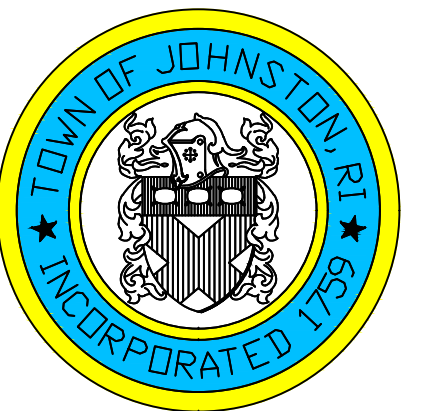
ASSESSOR'S MAP

SHOWING ZONING DISTRICTS

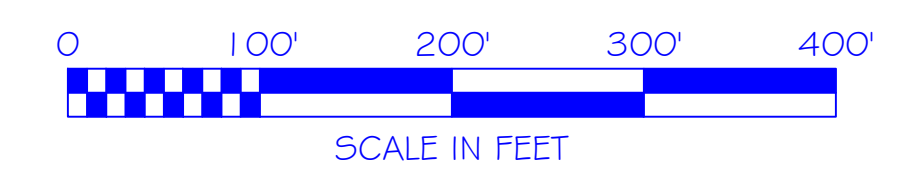
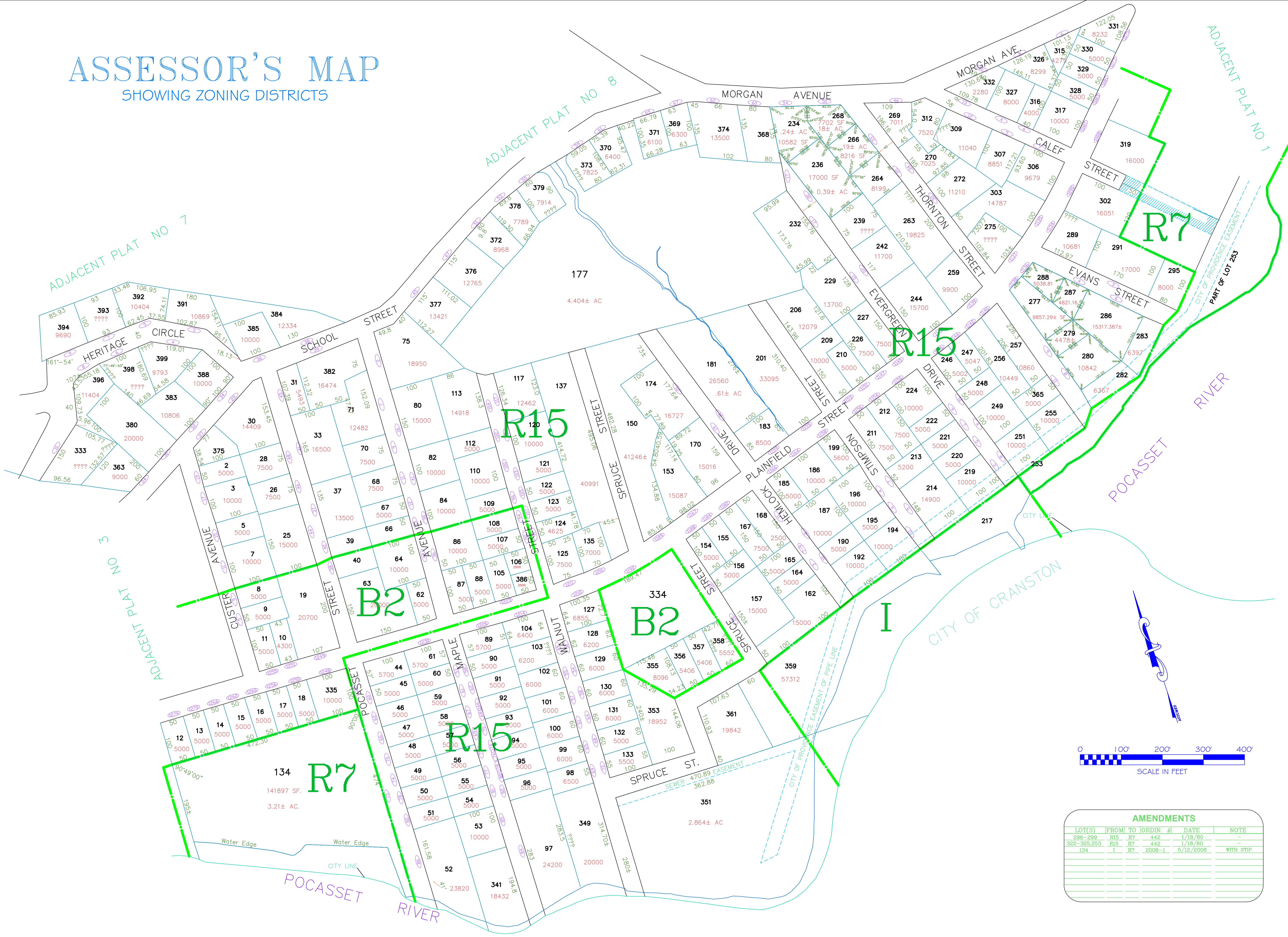
Assessor's Plat Number

2

STATE OF RHODE ISLAND
TOWN OF JOHNSTON
 PROVIDENCE COUNTY
 INCORPORATED 1759
 ASSESSOR'S OFFICE
 1385 HARTFORD AVENUE
 JOHNSTON, RHODE ISLAND
 02919



PLAT INDEX AREA



AMENDMENTS					
LOT(S)	FROM	TO	JORDIN #	DATE	NOTE
296-299	R15	R7	442	1/19/80	-
322-325,253	R15	R7	442	1/19/80	-
134	I	R7	2008-1	5/12/2008	WITH STIP.

Scale: 1:100
 Revised By: Benjamin Ng
 Last updated: January 02, 2022
 Date printed: May 04, 2022

For copies of plat maps, please go to the DPW at 100 Irons Avenue Johnston Rhode Island, Thank you.

NOTE: This map was prepared for the use of the Town of Johnston for assessment and illustrative purposes only. It does not represent a survey of the premises. No liability is assumed as to the sufficiency or accuracy of the data delineated hereon.