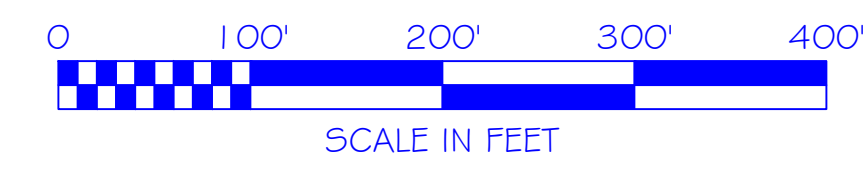
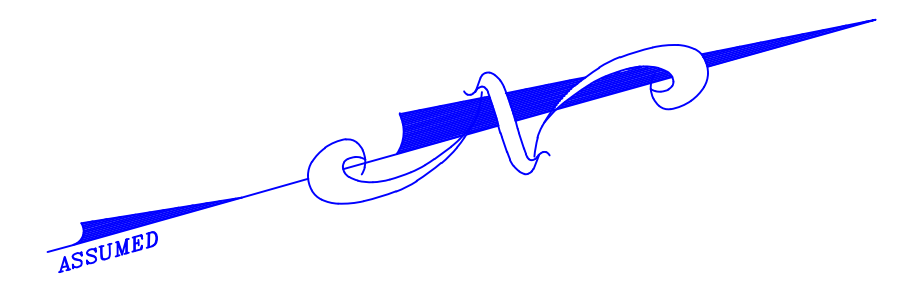
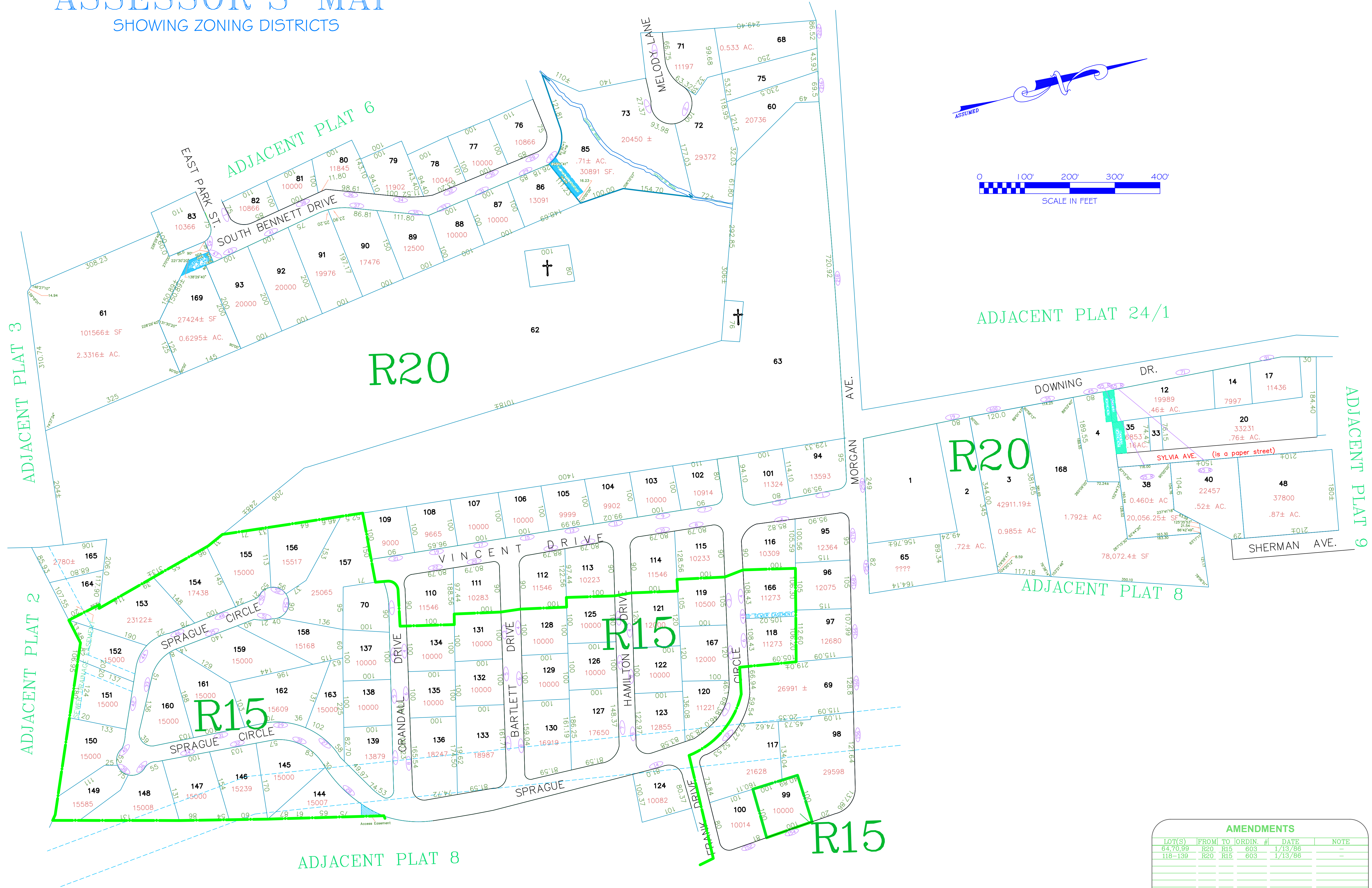


# ASSESSOR'S MAP

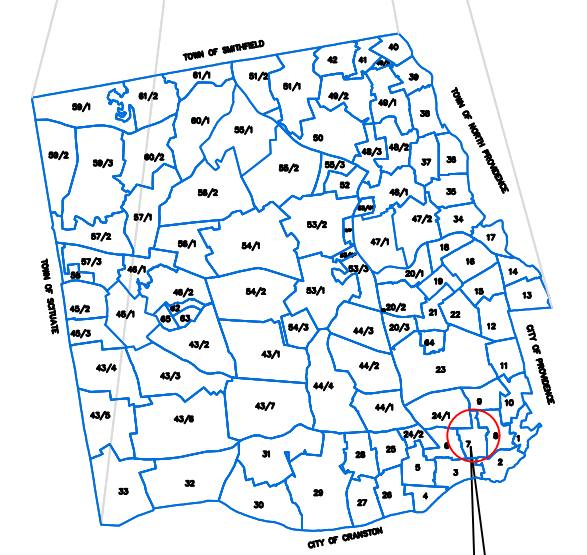
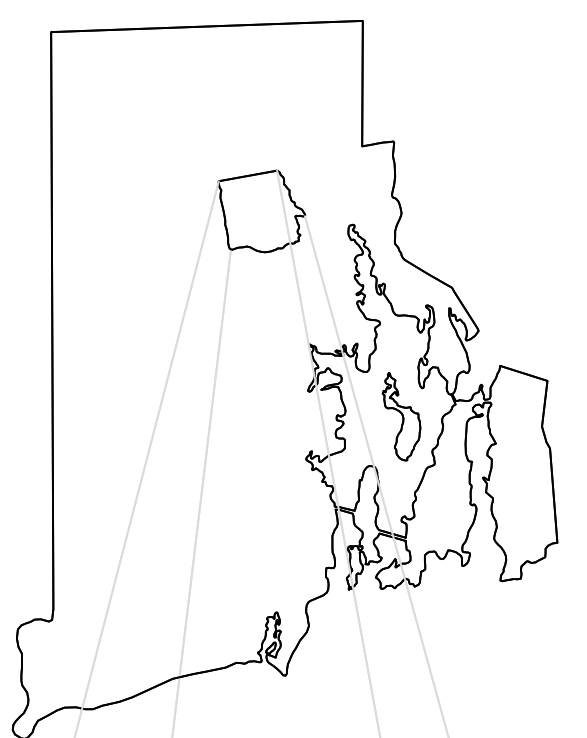
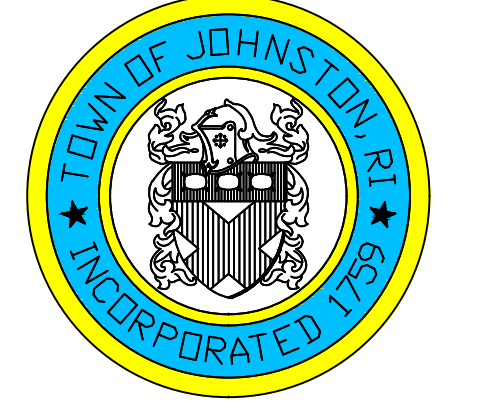
SHOWING ZONING DISTRICTS



Assessor's Plat Number

# 7

STATE OF RHODE ISLAND  
**TOWN OF JOHNSTON**  
 PROVIDENCE COUNTY  
 INCORPORATED 1759  
 ASSESSOR'S OFFICE  
 1385 HARTFORD AVENUE  
 JOHNSTON, RHODE ISLAND  
 02919



PLAT INDEX AREA

Scale: 1:100  
 Revised By: Benjamin Ng  
 Last updated: January 02, 2022  
 Date printed: May 24, 2022

AMENDMENTS					
LOT(S)	FROM	TO	ORDIN. #	DATE	NOTE
64,70,89	R20	R15	603	1/13/86	-
118-139	R20	R15	603	1/13/86	-

For copies of plat maps, please go to the DPW at 100 Irons Avenue Johnston Rhode Island, Thank you.  
 NOTE: This map was prepared for the use of the Town of Johnston for assessment and illustrative purposes only. It does not represent a survey of the premises. No liability is assumed as to the sufficiency or accuracy of the data delineated hereon.