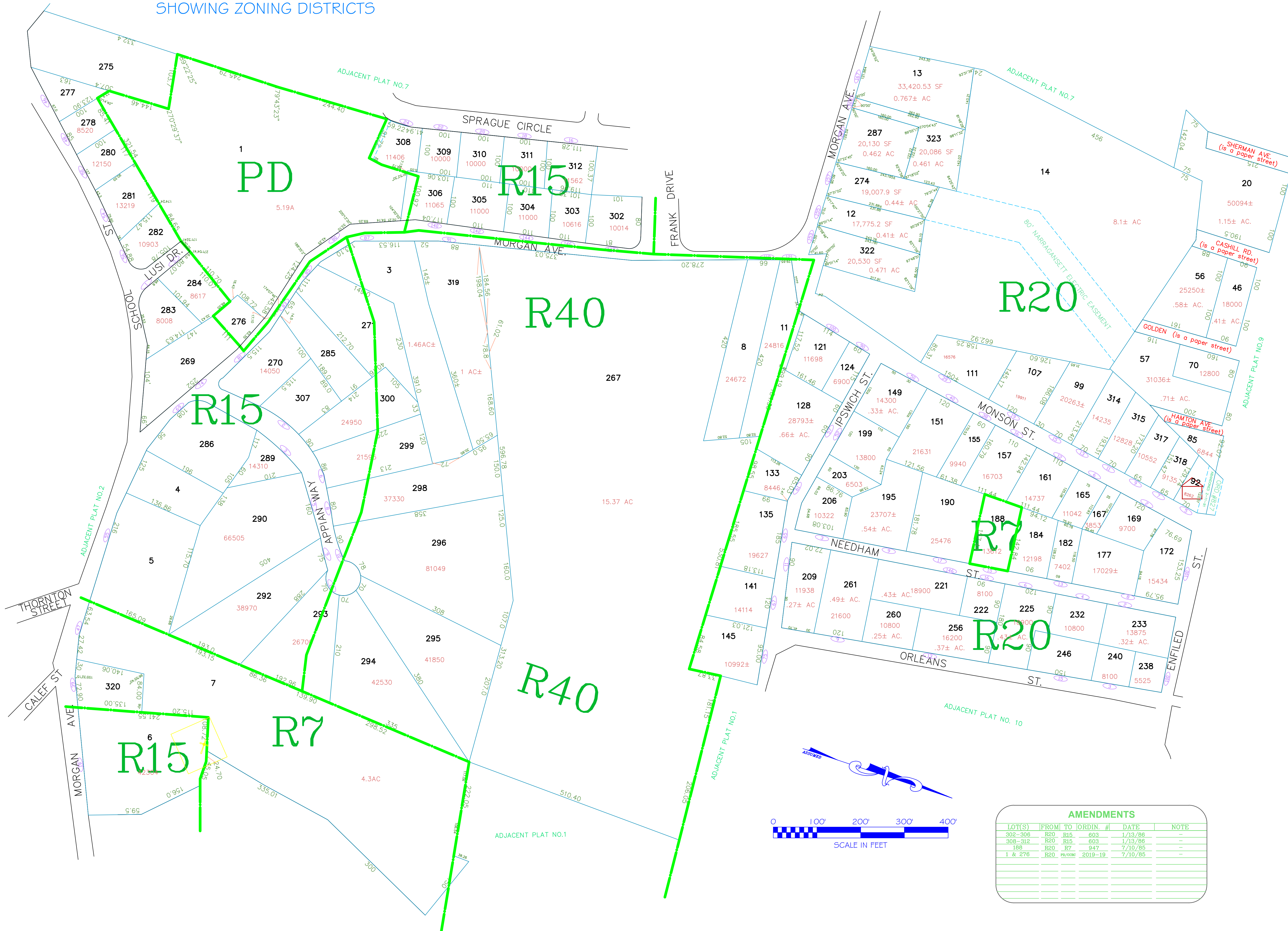


# ASSESSOR'S MAP

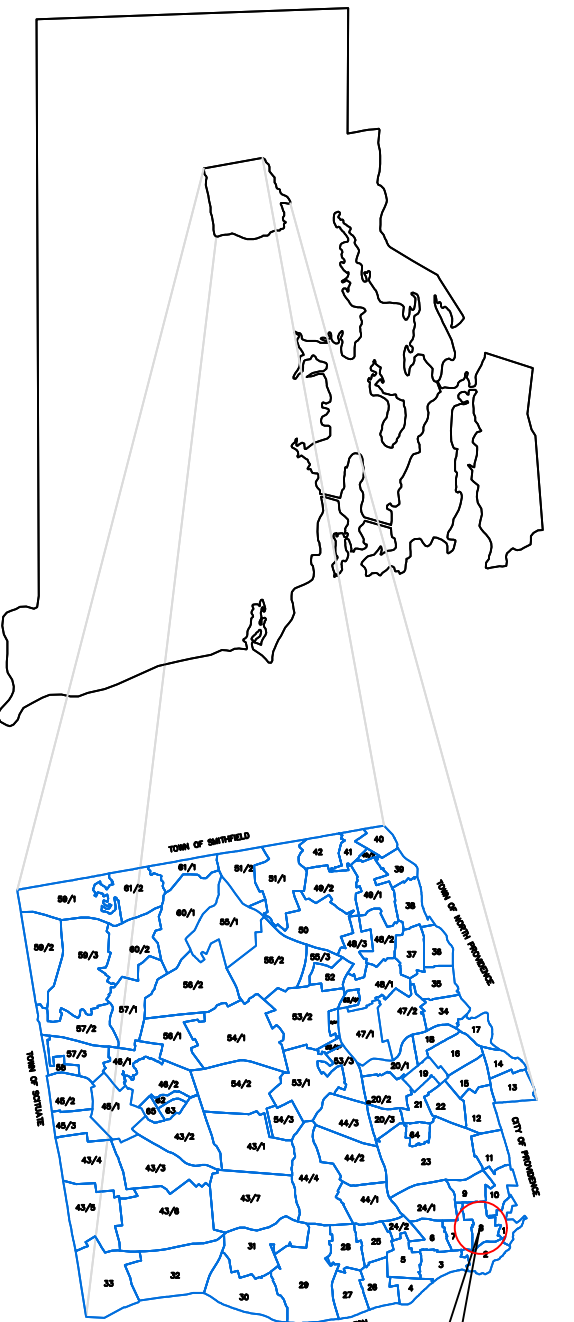
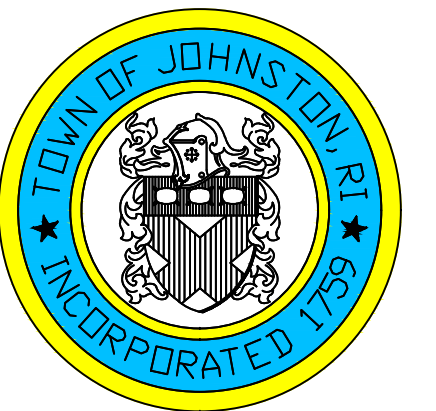
SHOWING ZONING DISTRICTS



Assessor's Plat Number

8

STATE OF RHODE ISLAND  
**TOWN OF JOHNSTON**  
 PROVIDENCE COUNTY  
 INCORPORATED 1759  
**ASSESSOR'S OFFICE**  
 1385 HARTFORD AVENUE  
 JOHNSTON, RHODE ISLAND  
 02919



PLAT INDEX AREA

Scale: 1:100

Revised By: Benjamin Ng

Last updated: January 02, 2022

Date printed: May 27, 2022

For copies of plat maps, please go to the DPW at 100 Irons Avenue Johnston Rhode Island, Thank you.

NOTE: This map was prepared for the use of the Town of Johnston for assessment and illustrative purposes only. It does not represent a survey of the premises. No liability is assumed as to the sufficiency or accuracy of the data delineated herein.

**AMENDMENTS**

LOT(S)	FROM	TO	ORDIN. #	DATE	NOTE
302-306	R20	R15	603	1/13/86	-
308-312	R20	R15	603	1/13/86	-
188	R20	R7	947	7/10/85	-
1 & 276	R20	R7	2019-19	7/10/85	-

