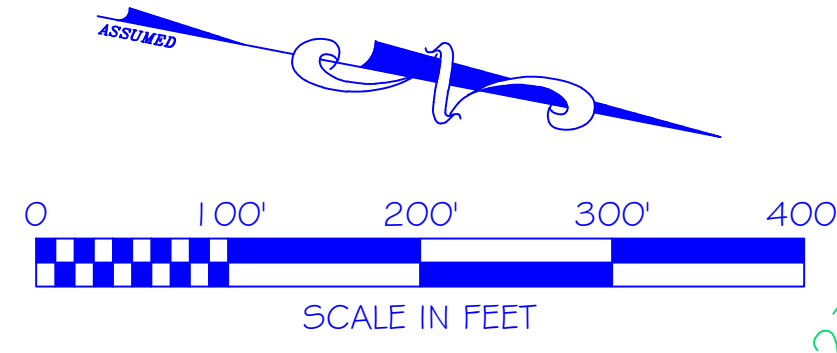


# ASSESSOR'S MAP

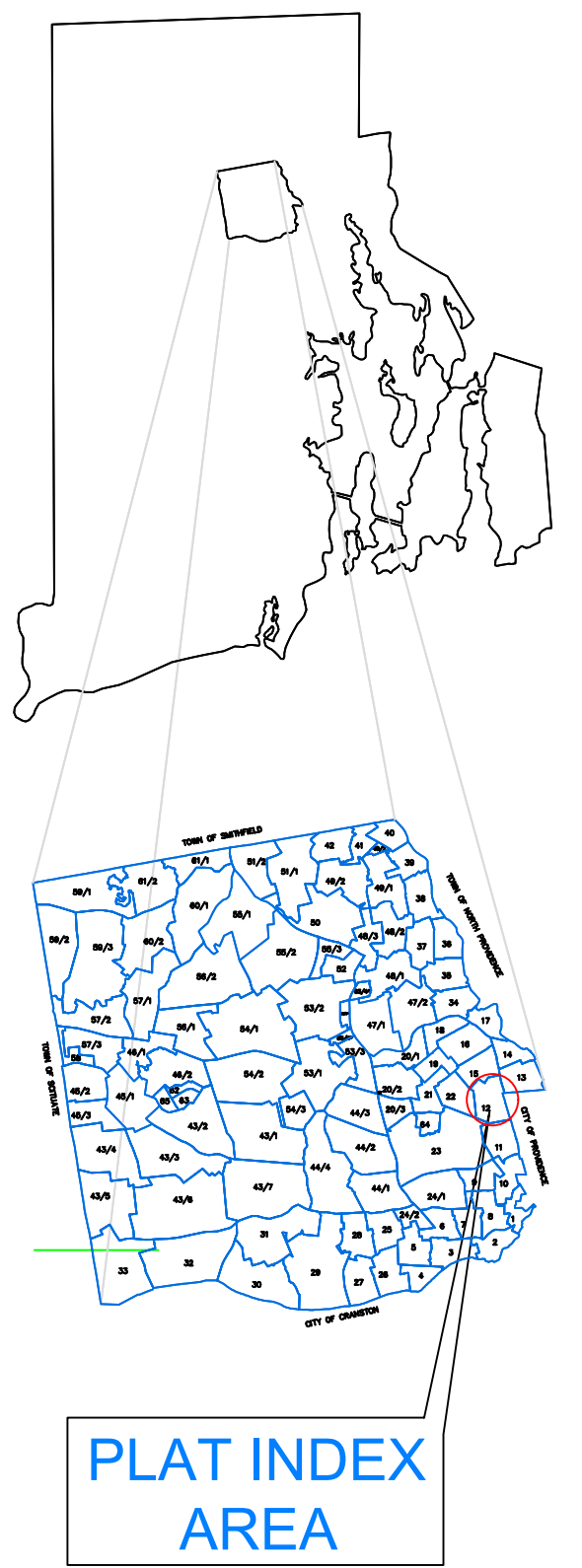
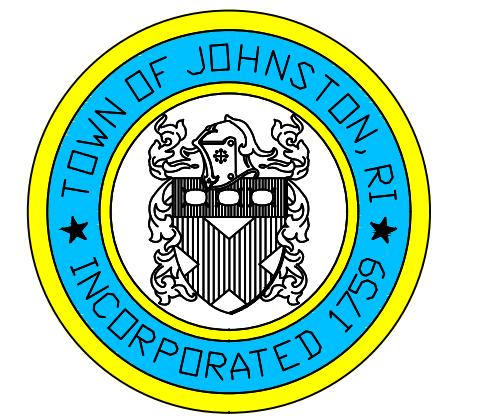
SHOWING ZONING DISTRICTS



AMENDMENTS					
LOT(S)	FROM	TO	ORDIN. #	DATE	NOTE
8	B2	R7	596	11/12/85	WITH STIP.
22	R10	B1	685	7/13/87	WITH STIP.
333, 360	R15	B2	2002-27	2/10/03	WITH STIP.

Assessor's Plat  
Number  
**12**

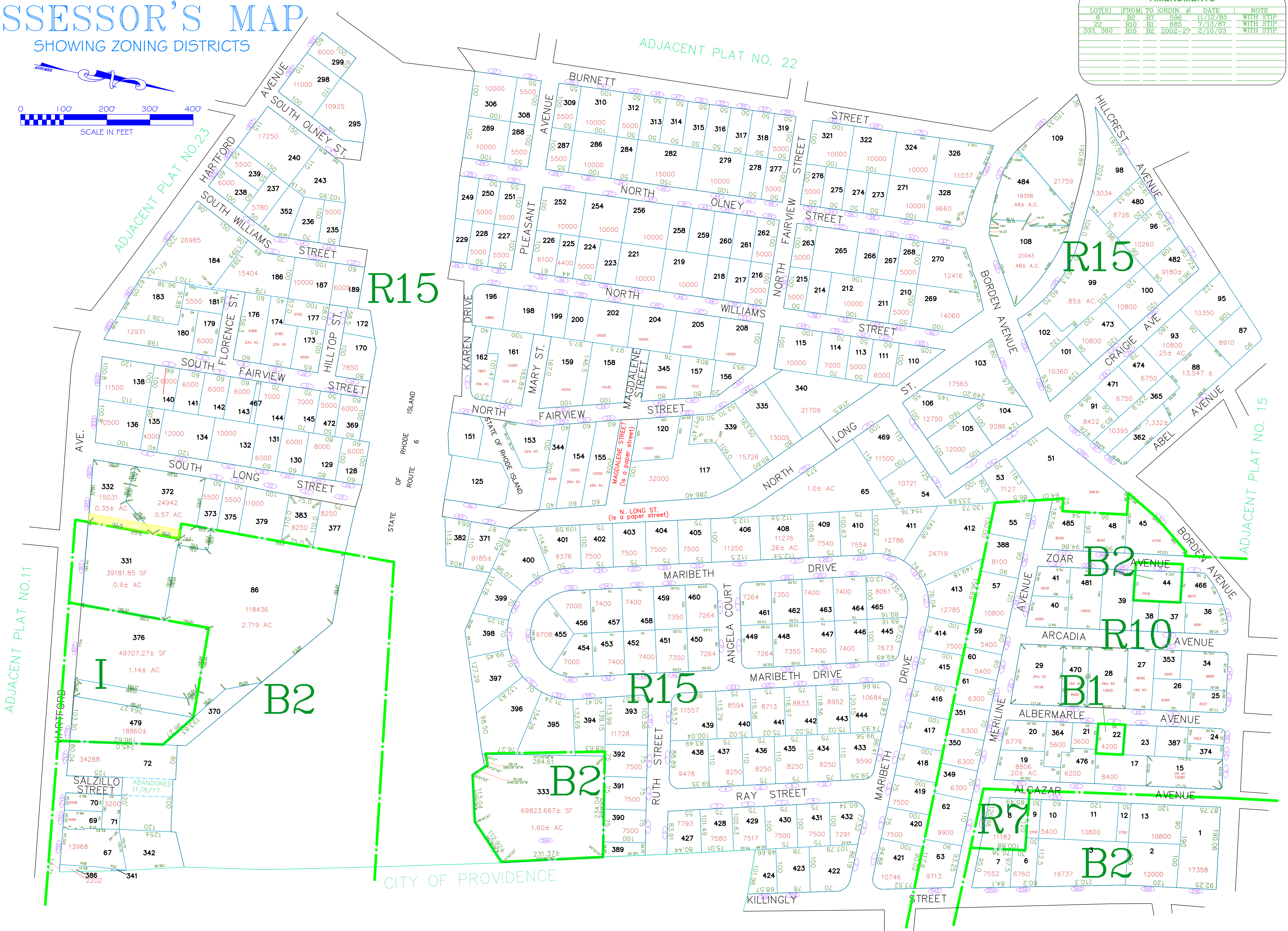
STATE OF RHODE ISLAND  
**TOWN OF JOHNSTON**  
PROVIDENCE COUNTY  
INCORPORATED 1759  
**ASSESSOR'S OFFICE**  
1385 HARTFORD AVENUE  
JOHNSTON, RHODE ISLAND  
02919



PLAT INDEX  
AREA

Scale: 1:100  
Revised By: Benjamin Ng  
Last updated: January 02, 2022  
Date printed: May 27, 2022

For copies of plat maps, please go to the DPW at 100 Irons Avenue Johnston Rhode Island, Thank you.  
NOTE: This map was prepared for the use of the Town of Johnston for assessment and illustrative purposes only. It does not represent a survey of the premises. No liability is assumed as to the sufficiency or accuracy of the data delineated hereon.



R15

R15

B2

R15

B1

R10

R7

B2

I