

ASSESSOR'S MAP

SHOWING ZONING DISTRICTS

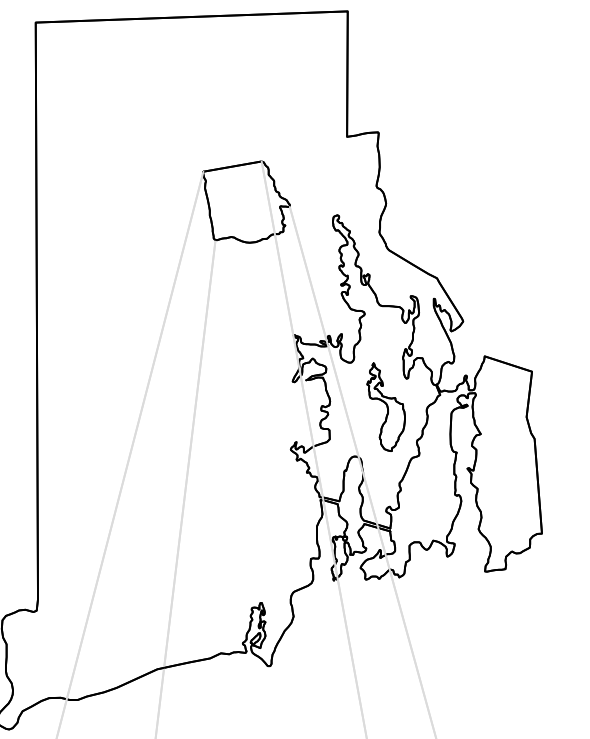
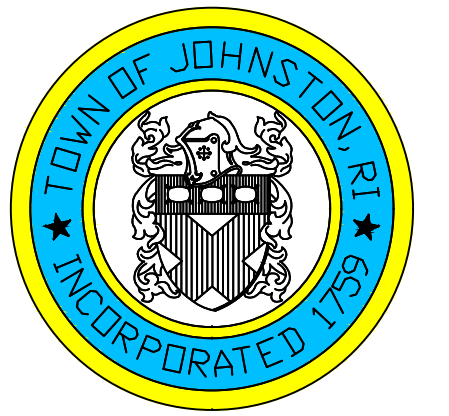
ADJACENT PLAT 18

AMENDMENTS					
LOT(S)	FROM	TO	JORDIN #	DATE	NOTE
400-402	R15	R7	854	1/13/92	-

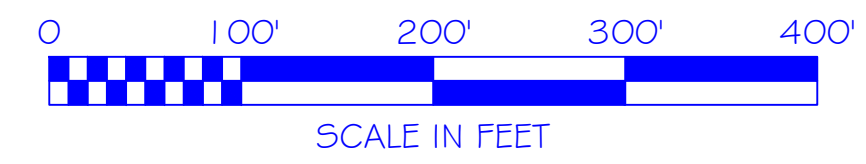
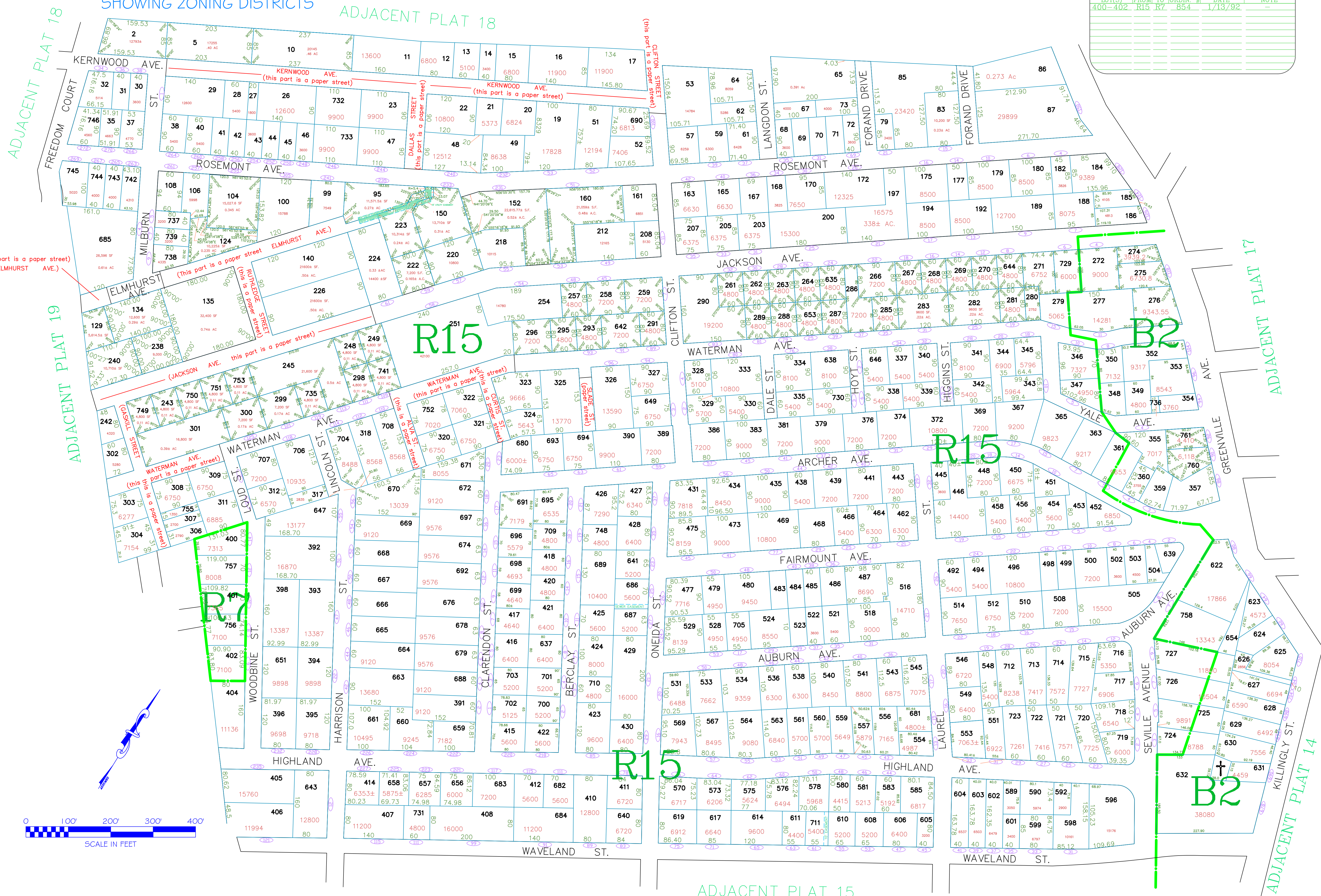
Assessor's Plat Number

16

STATE OF RHODE ISLAND
TOWN OF JOHNSTON
 PROVIDENCE COUNTY
 INCORPORATED 1759
 ASSESSOR'S OFFICE
 1385 HARTFORD AVENUE
 JOHNSTON, RHODE ISLAND
 02919



PLAT INDEX AREA



Scale: 1:100
 Revised By: Benjamin Ng
 Last updated: January 02, 2022
 Date printed: May 24, 2022

For copies of plat maps, please go to the DPW at 100 Irons Avenue Johnston Rhode Island, Thank you.

NOTE: This map was prepared for the use of the Town of Johnston for assessment and illustrative purposes only. It does not represent a survey of the premises. No liability is assumed as to the sufficiency or accuracy of the data delineated hereon.