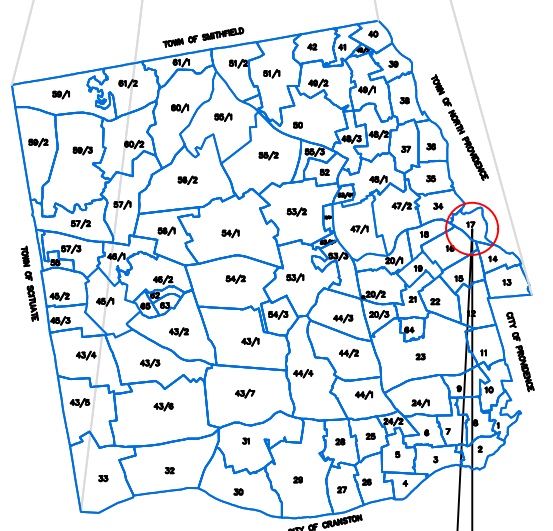
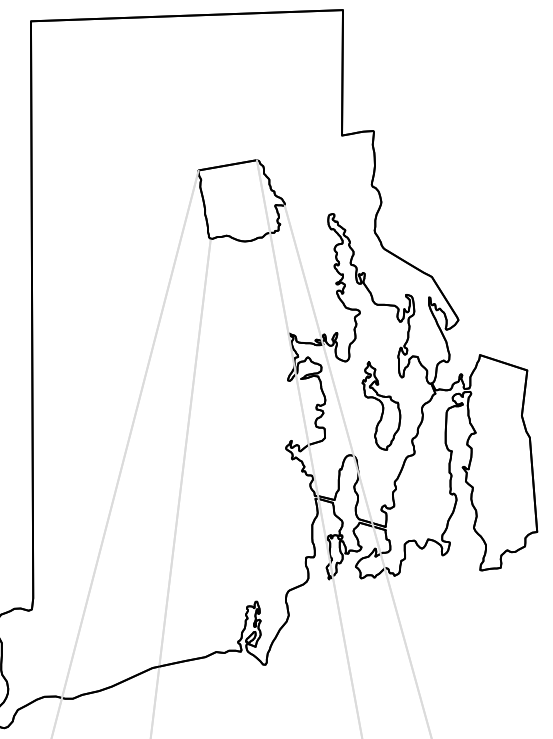
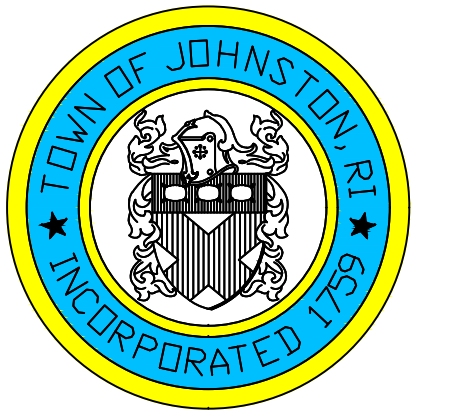


ASSESSOR'S MAP

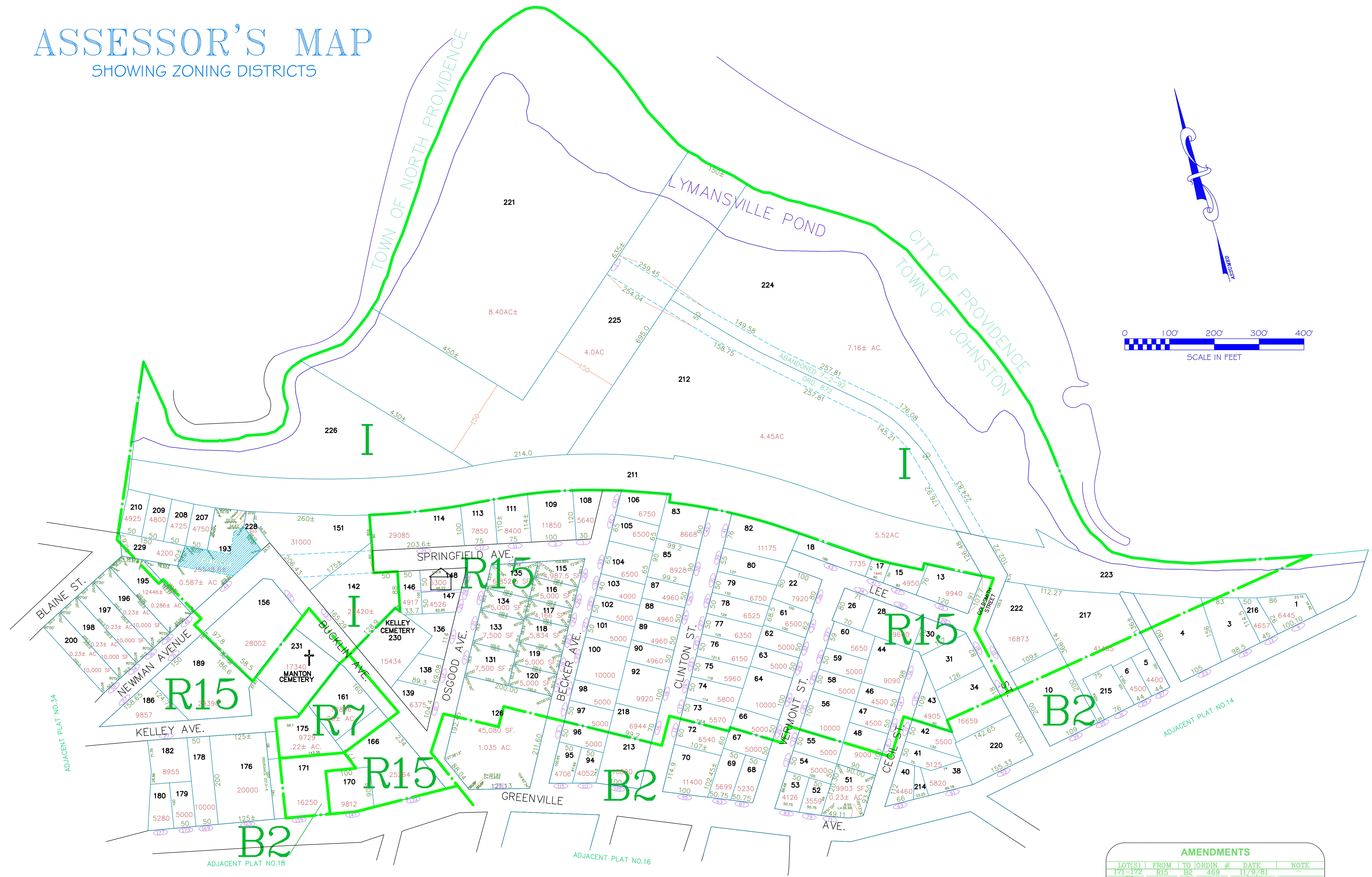
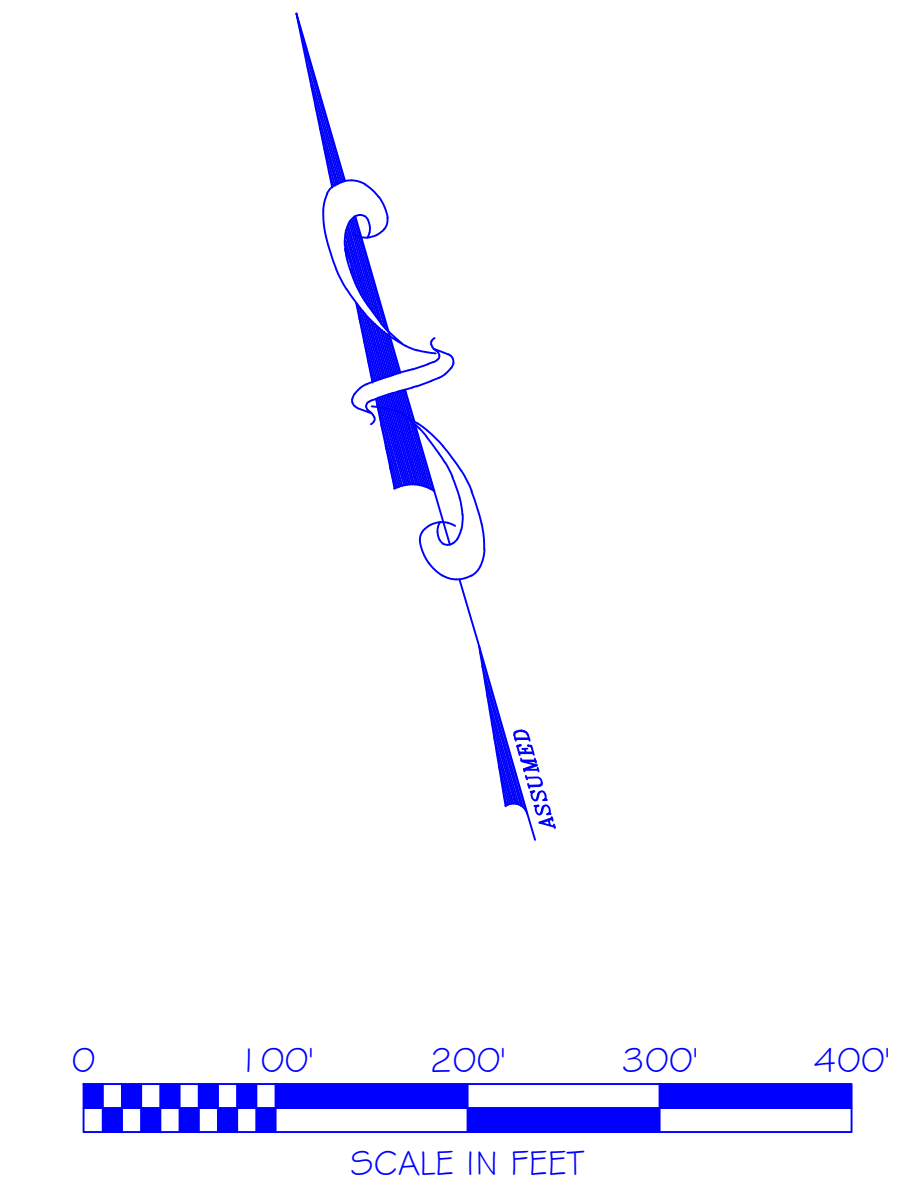
SHOWING ZONING DISTRICTS

Assessor's Plat
Number
17

STATE OF RHODE ISLAND
TOWN OF JOHNSTON
PROVIDENCE COUNTY
INCORPORATED 1759
ASSESSOR'S OFFICE
1385 HARTFORD AVENUE
JOHNSTON, RHODE ISLAND
02919



PLAT INDEX
AREA



AMENDMENTS					
LOT(S)	FROM	TO	ORDIN. #	DATE	NOTE
171-172	R15	B2	469	11/9/81	-
173	R15	B2	527	1/9/84	-
142	R15	I	607	4/21/86	-
160-163	R15	R7	737	7/11/88	-
174-175	R15	R7	737	7/11/88	-

Scale: 1:100
Revised By: Benjamin Ng
Last updated: January 02, 2022
Date printed: May 24, 2022

For copies of plat maps, please go to the DPW at 100 Irons Avenue Johnston Rhode Island, Thank you.

NOTE: This map was prepared for the use of the Town of Johnston for assessment and illustrative purposes only. It does not represent a survey of the premises. No liability is assumed as to the sufficiency or accuracy of the data delineated herein.