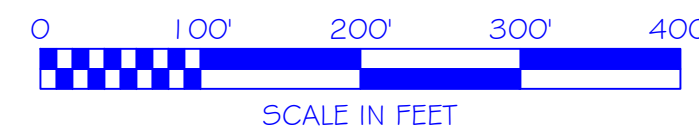
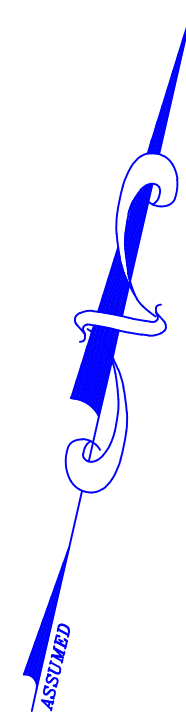


ASSESSOR'S MAP

SHOWING ZONING DISTRICTS

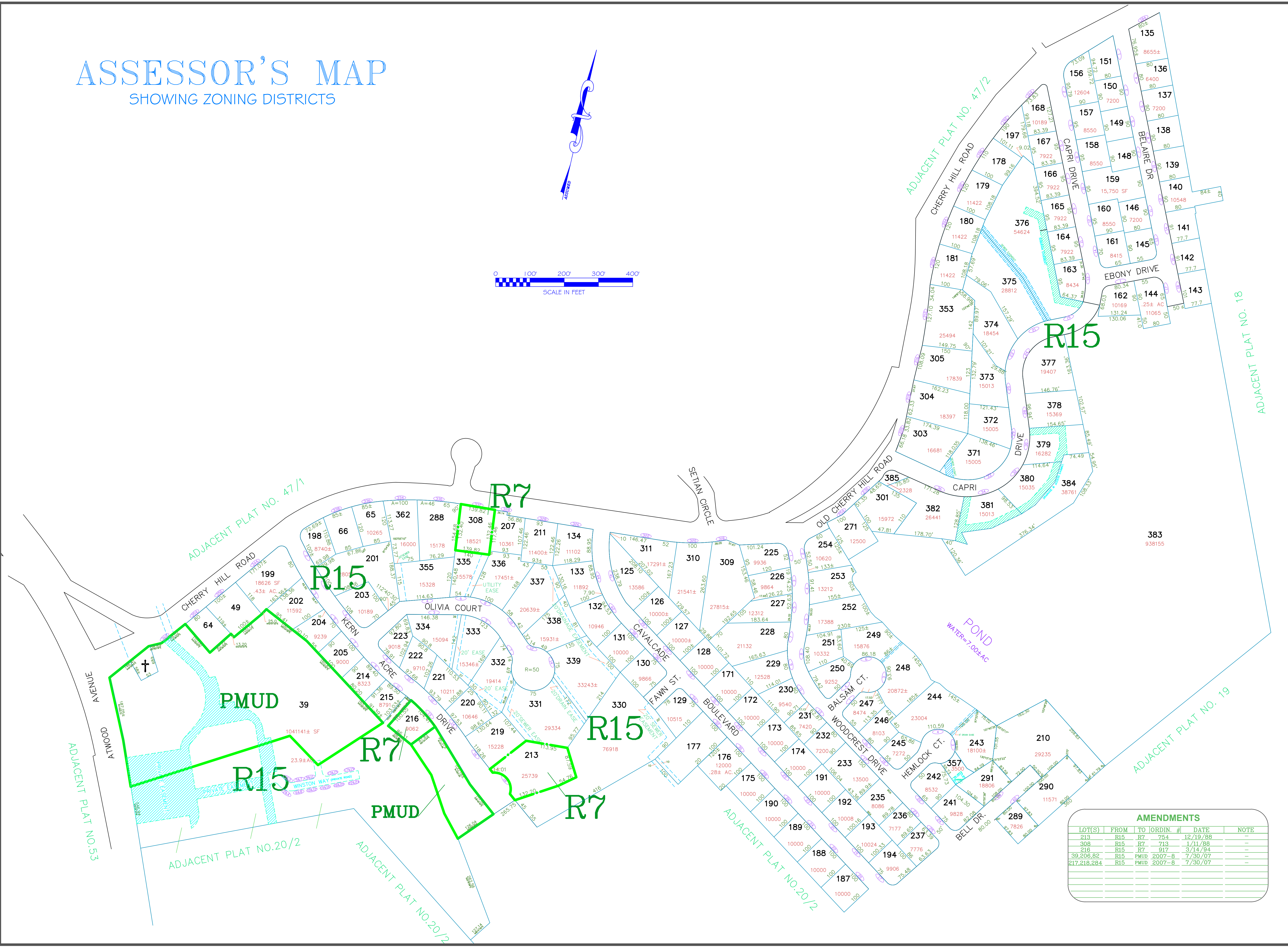
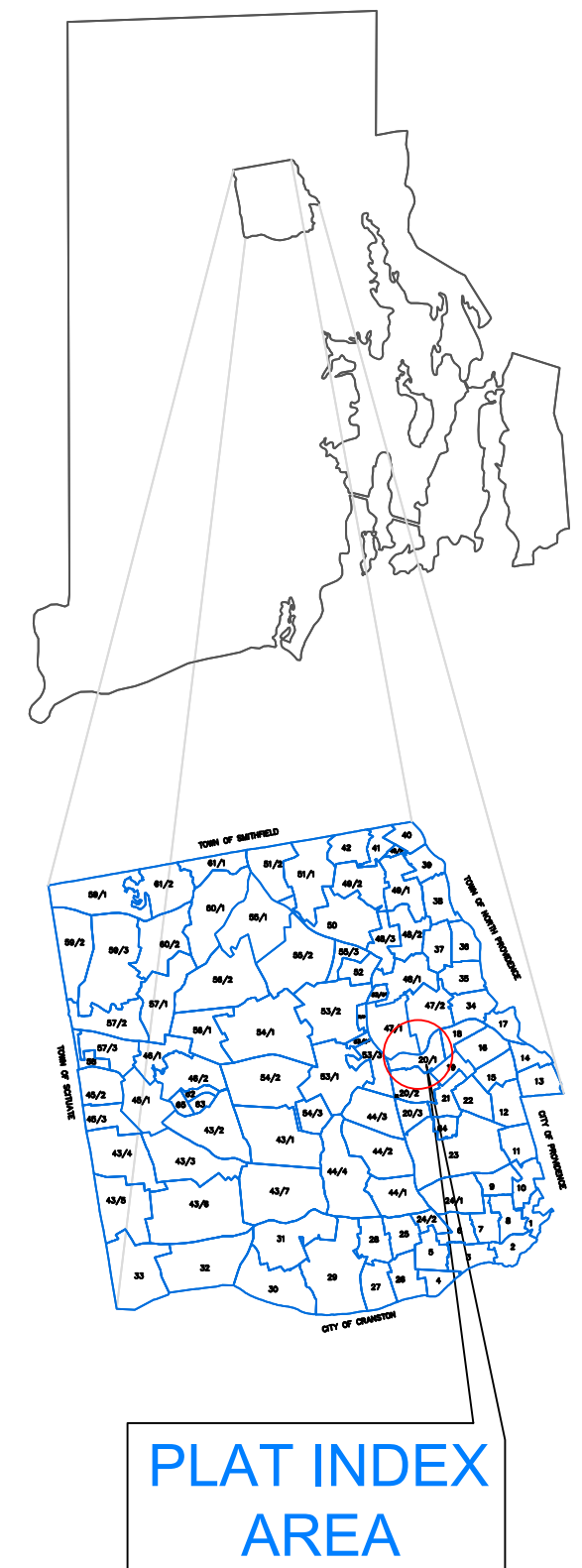
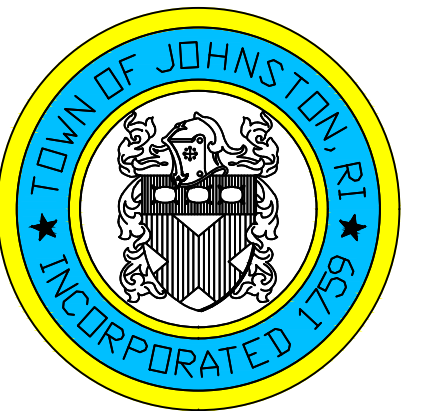


Assessor's Plat Number

20/1

STATE OF RHODE ISLAND
TOWN OF JOHNSTON
PROVIDENCE COUNTY
INCORPORATED 1759

ASSESSOR'S OFFICE
1385 HARTFORD AVENUE
JOHNSTON, RHODE ISLAND
02919



AMENDMENTS					
LOT(S)	FROM	TO	ORDIN. #	DATE	NOTE
213	R15	R7	754	12/19/88	-
308	R15	R7	718	1/11/88	-
216	R15	R7	917	3/14/94	-
39,206,82	R15	PMUD	2007-8	7/30/07	-
217,218,284	R15	PMUD	2007-8	7/30/07	-

Scale: 1:120
Revised By: Benjamin Ng
Last updated: January 02, 2022
Date printed: May 27, 2022

For copies of plat maps, please go to the DPW at 100 Irons Avenue Johnston Rhode Island, Thank you.

NOTE: This map was prepared for the use of the Town of Johnston for assessment and illustrative purposes only. It does not represent a survey of the premises. No liability is assumed as to the sufficiency or accuracy of the data delineated hereon.