

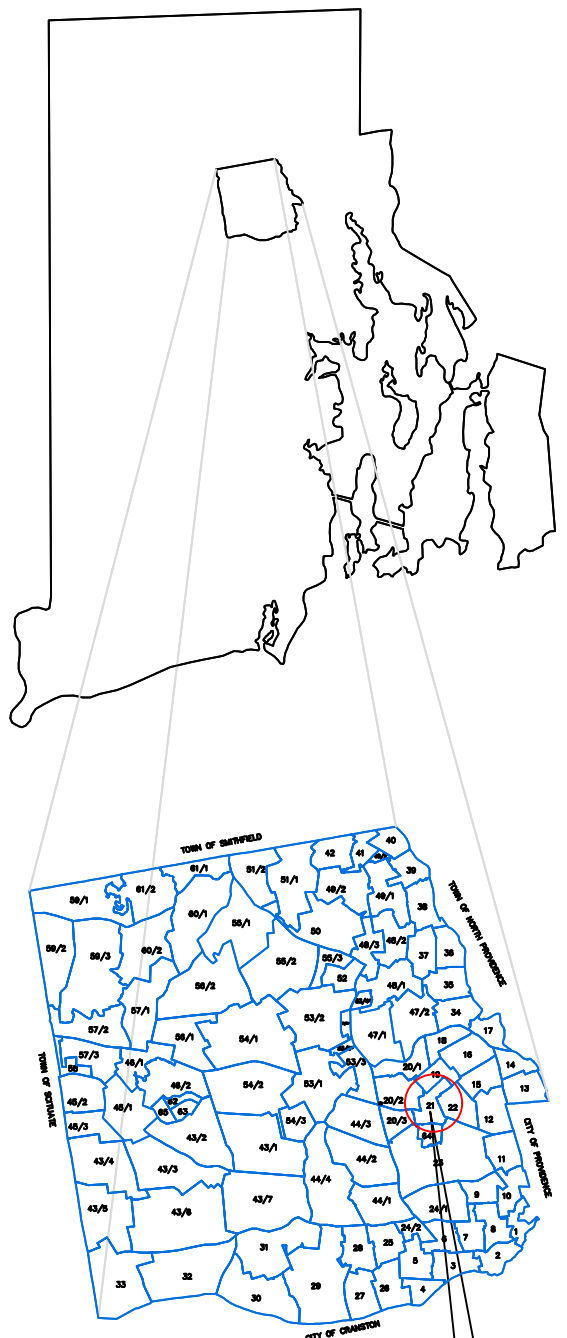
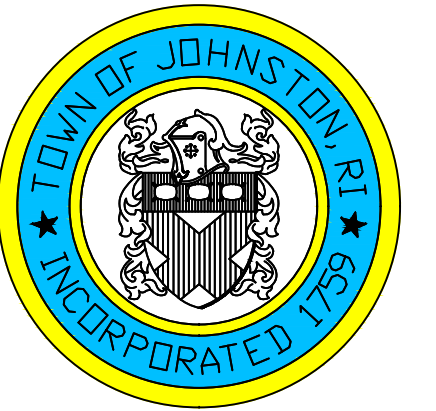
ASSESSOR'S MAP

SHOWING ZONING DISTRICTS

Assessor's Plat Number

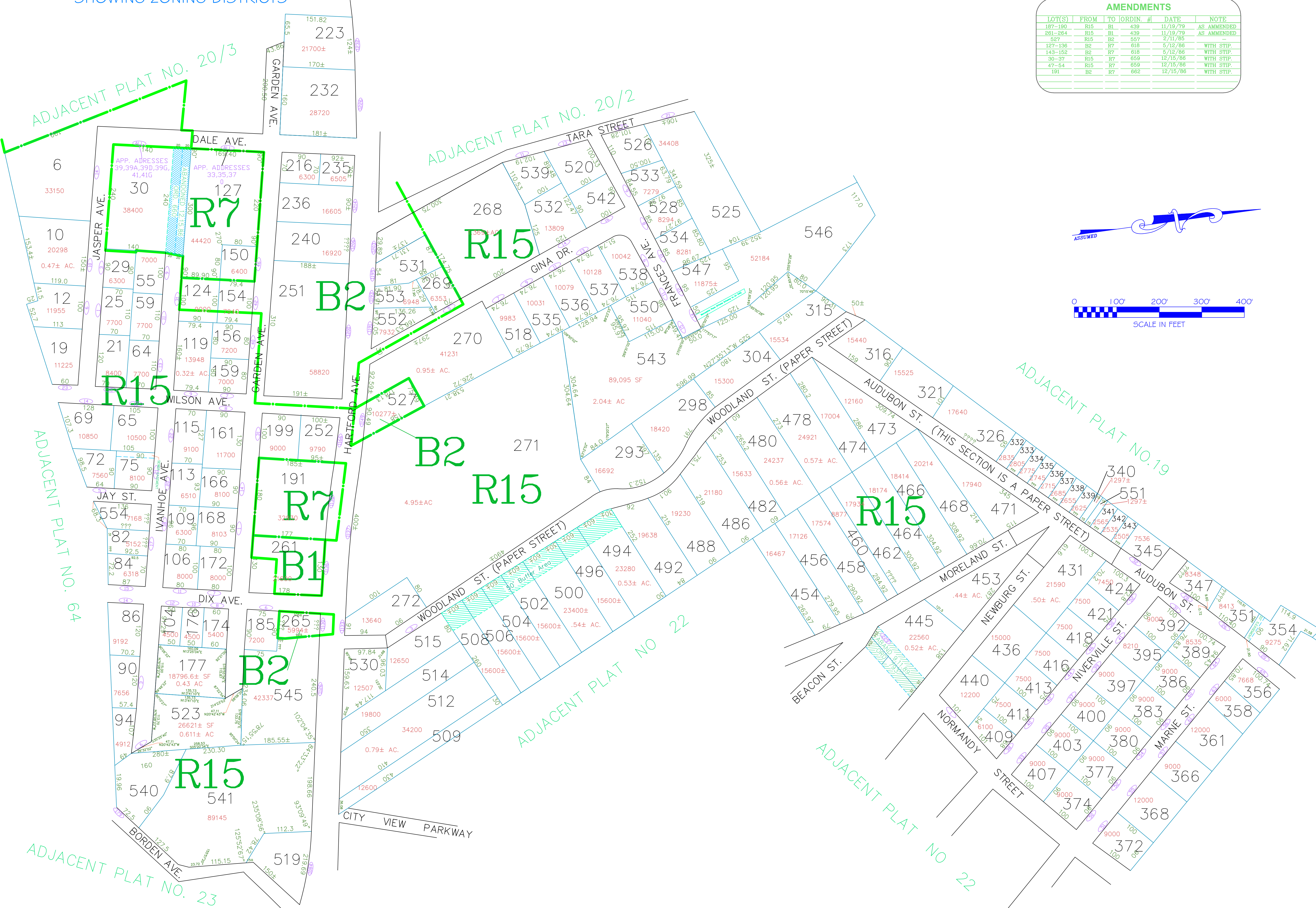
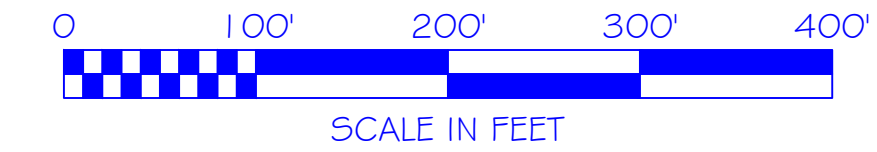
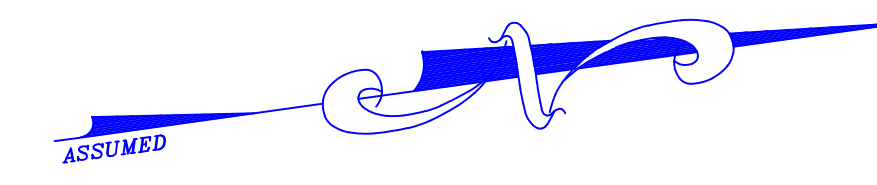
21

STATE OF RHODE ISLAND
TOWN OF JOHNSTON
 PROVIDENCE COUNTY
 INCORPORATED 1759
 ASSESSOR'S OFFICE
 1385 HARTFORD AVENUE
 JOHNSTON, RHODE ISLAND
 02919



PLAT INDEX AREA

AMENDMENTS					
LOT(S)	FROM	TO	ORDIN. #	DATE	NOTE
187-190	R15	B1	439	11/19/79	AS AMENDED
281-284	R15	B1	439	11/19/79	AS AMENDED
527	R15	B2	557	2/11/85	
127-136	B2	R7	618	5/12/86	WITH STIP.
143-162	B2	R7	618	5/12/86	WITH STIP.
30-37	R15	R7	659	12/15/86	WITH STIP.
47-54	R15	R7	659	12/15/86	WITH STIP.
191	B2	R7	662	12/15/86	WITH STIP.



Scale: 1:100
 Revised By: Benjamin Ng
 Last updated: January 02, 2022
 Date printed: May 24, 2022

For copies of plat maps, please go to the DPW at 100 Irons Avenue Johnston Rhode Island, Thank you.

NOTE: This map was prepared for the use of the Town of Johnston for assessment and illustrative purposes only. It does not represent a survey of the premises. No liability is assumed as to the sufficiency or accuracy of the data delineated hereon.