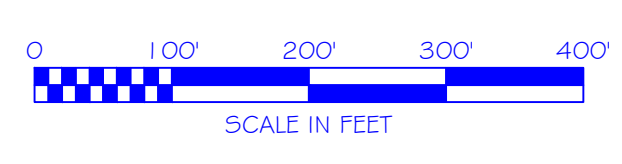
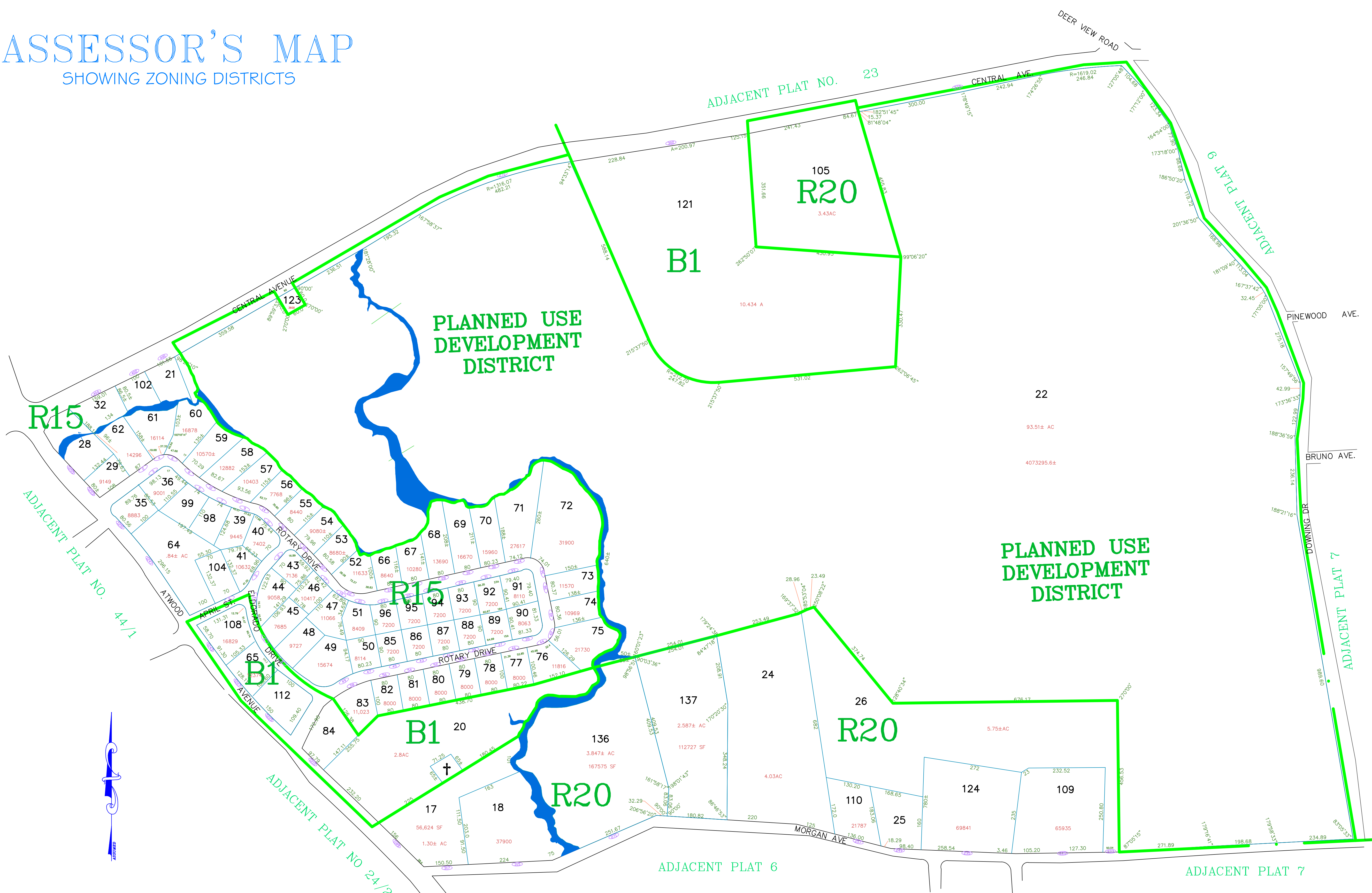
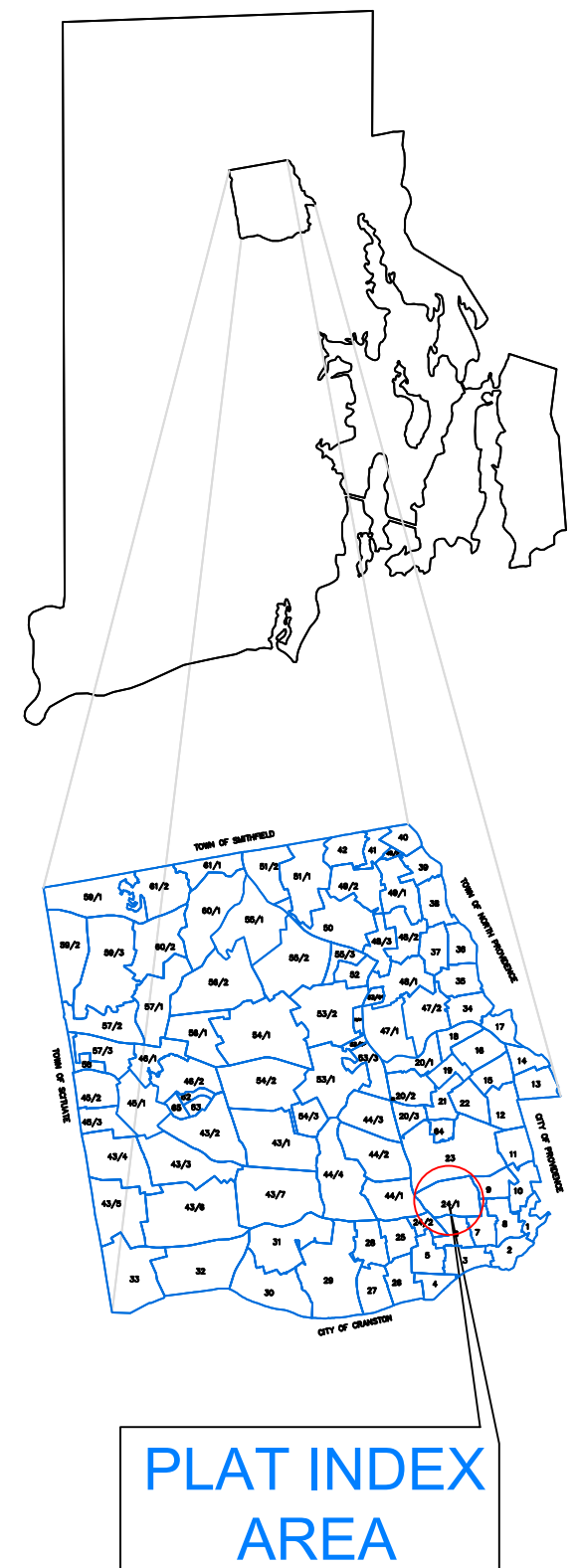
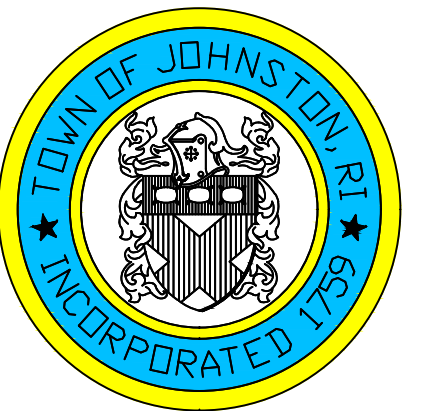


# ASSESSOR'S MAP

SHOWING ZONING DISTRICTS

Assessor's Plat Number  
**24/1**

STATE OF RHODE ISLAND  
**TOWN OF JOHNSTON**  
PROVIDENCE COUNTY  
INCORPORATED 1759  
ASSESSOR'S OFFICE  
1385 HARTFORD AVENUE  
JOHNSTON, RHODE ISLAND  
02919



AMENDMENTS					
LOT(S)	FROM	TO	ORDIN. #	DATE	NOTE
22, 114-115	R20, R15	B1	513	5/9/83	WITH STIP.
22, 115	B1	PD	2007-18	12/10/07	-
122, 114	B1	PD	2007-18	12/10/07	-

Scale: 1:140  
Revised By: Benjamin Ng  
Last updated: January 02, 2022  
Date printed: May 24, 2022

For copies of plat maps, please go to the DPW at 100 Irons Avenue Johnston Rhode Island, Thank you.

NOTE: This map was prepared for the use of the Town of Johnston for assessment and illustrative purposes only. It does not represent a survey of the premises. No liability is assumed as to the sufficiency or accuracy of the data delineated hereon.