

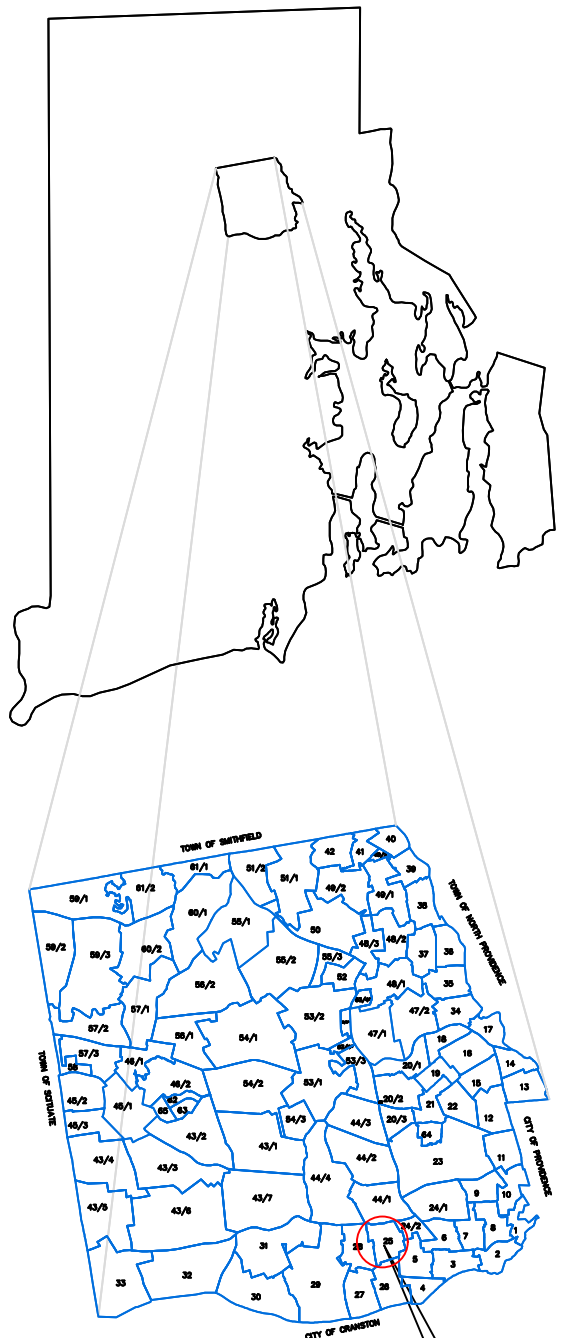
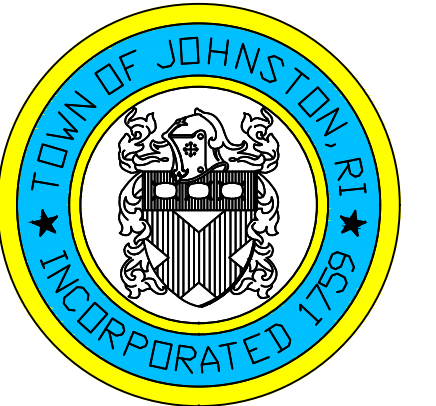
ASSESSOR'S MAP

SHOWING ZONING DISTRICTS

Assessor's Plat Number

25

STATE OF RHODE ISLAND
TOWN OF JOHNSTON
 PROVIDENCE COUNTY
 INCORPORATED 1759
 ASSESSOR'S OFFICE
 1385 HARTFORD AVENUE
 JOHNSTON, RHODE ISLAND
 02919

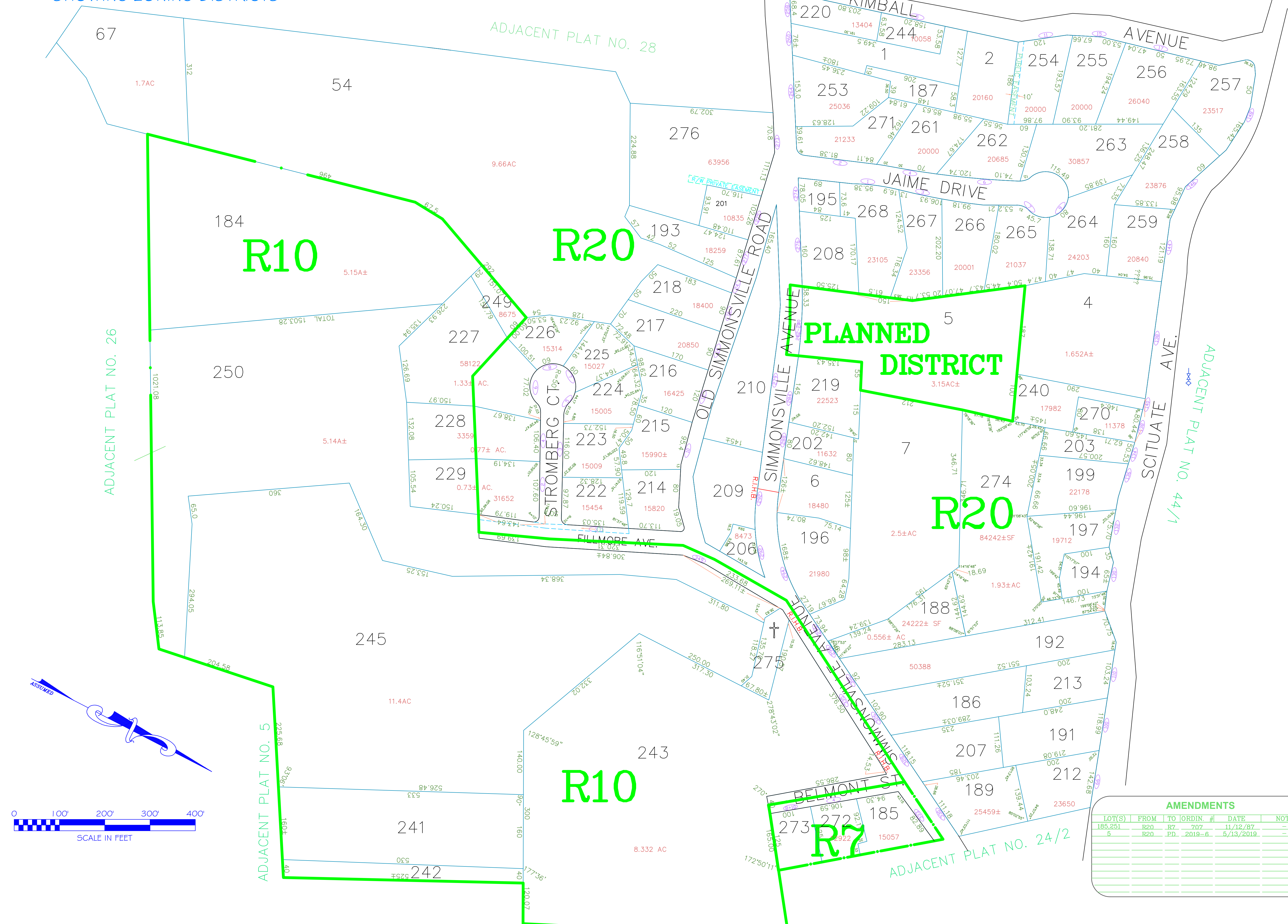


PLAT INDEX AREA

Scale: 1:120
 Revised By: Benjamin Ng
 Last updated: January 02, 2022
 Date printed: May 22, 2022

For copies of plat maps, please go to the DPW at 100 Irons Avenue Johnston Rhode Island, Thank you.

NOTE: This map was prepared for the use of the Town of Johnston for assessment and illustrative purposes only. It does not represent a survey of the premises. No liability is assumed as to the sufficiency or accuracy of the data delineated hereon.



AMENDMENTS					
LOT(S)	FROM	TO	ORDIN. #	DATE	NOTE
185,251	R20	R7	707	11/12/87	-
5	R20	PD	2019-6	5/13/2019	-

