

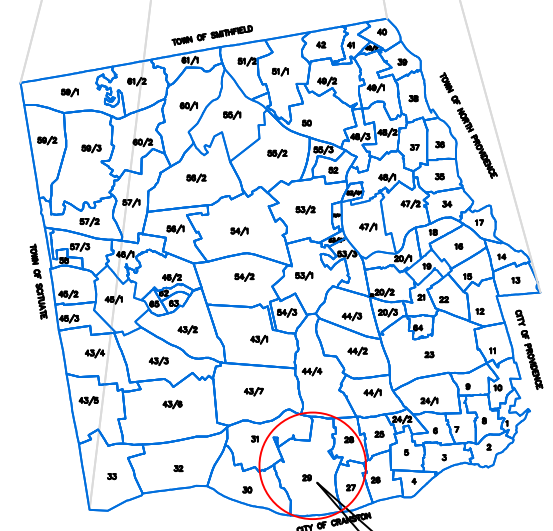
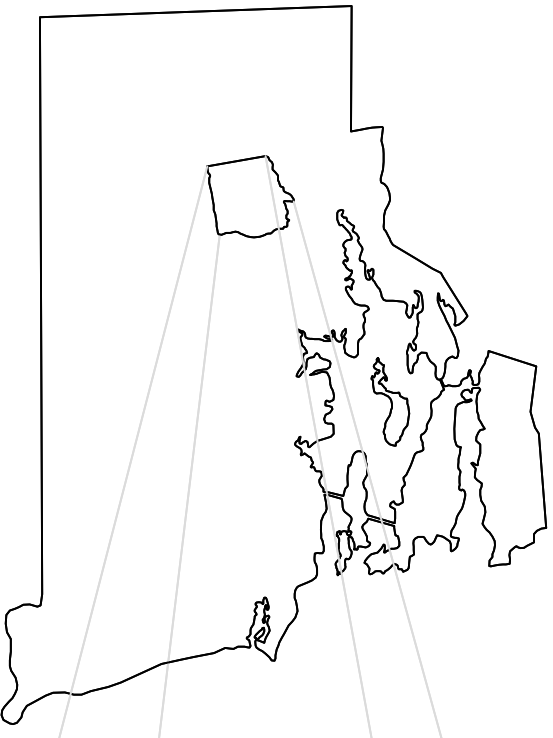
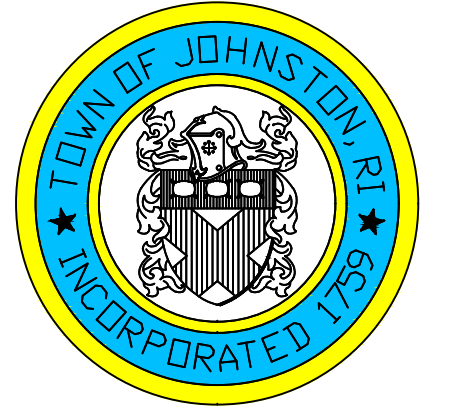
# ASSESSOR'S MAP

SHOWING ZONING DISTRICTS

AMENDMENTS				
LOT(S)	FROM	TO IORDIN. #	DATE	NOTE

Assessor's Plat  
Number  
**29**

STATE OF RHODE ISLAND  
**TOWN OF JOHNSTON**  
PROVIDENCE COUNTY  
INCORPORATED 1759  
ASSESSOR'S OFFICE  
1385 HARTFORD AVENUE  
JOHNSTON, RHODE ISLAND  
02919

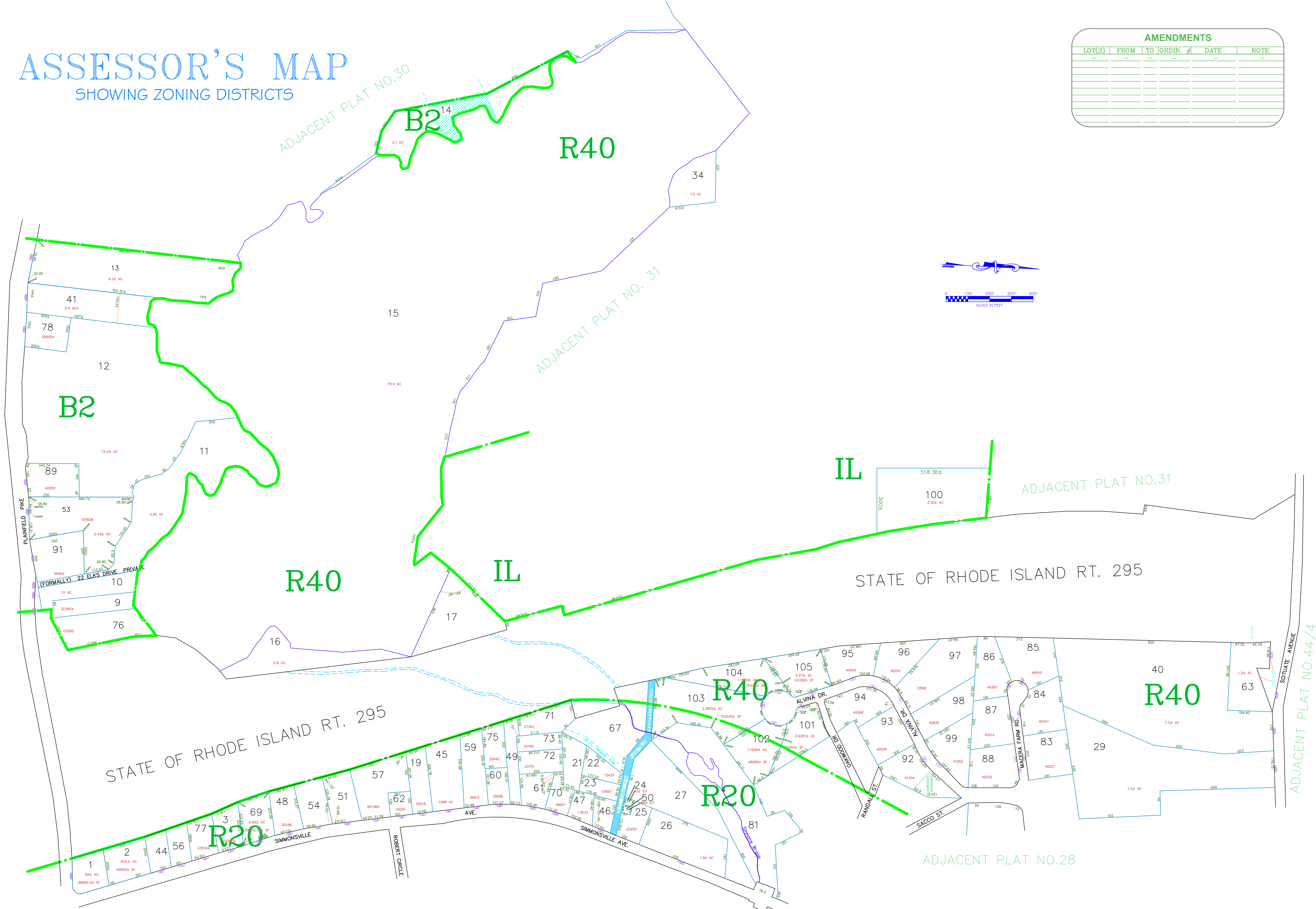


**PLAT INDEX AREA**

Scale: 1:200  
Revised By: Benjamin Ng  
Last updated: January 02, 2022  
Date printed: May 22, 2022

For copies of plat maps, please go to the DPW at 100 Irons Avenue Johnston Rhode Island, Thank you.

NOTE: This map was prepared for the use of the Town of Johnston for assessment and illustrative purposes only. It does not represent a survey of the premises. No liability is assumed as to the sufficiency or accuracy of the data delineated hereon.



ADJACENT PLAT NO.27

ADJACENT PLAT NO.28

ADJACENT PLAT NO.44/4