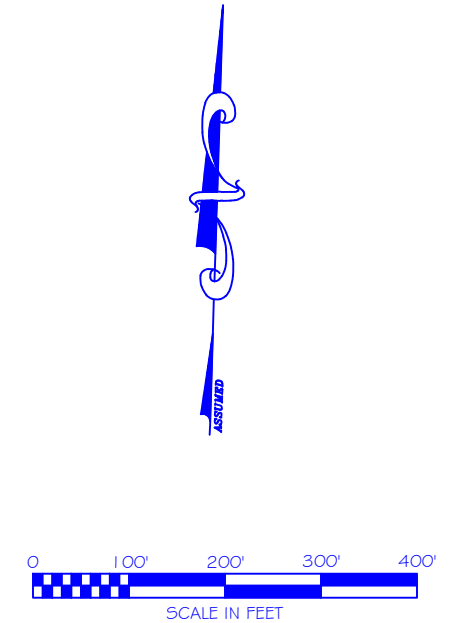
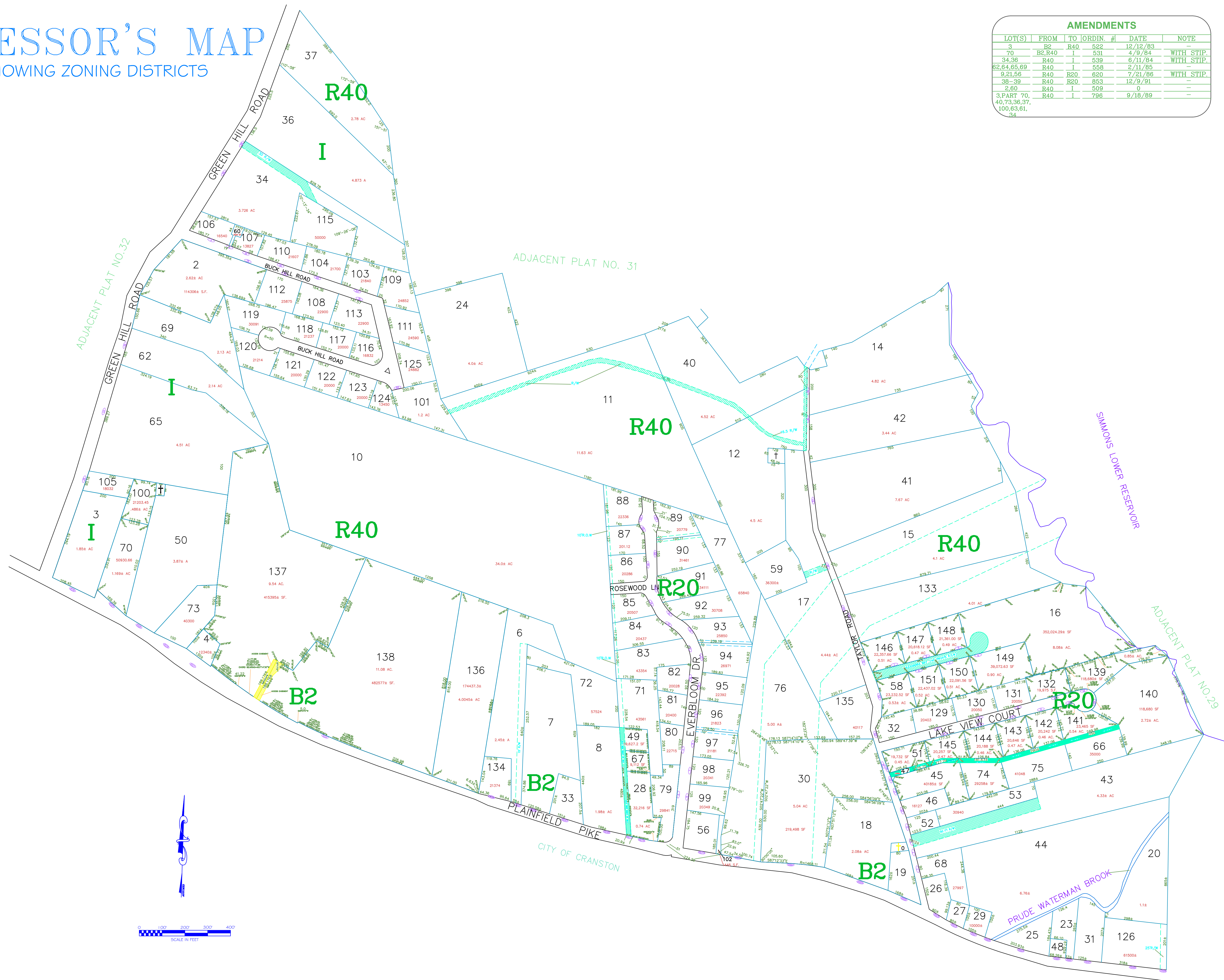


ASSESSOR'S MAP

SHOWING ZONING DISTRICTS

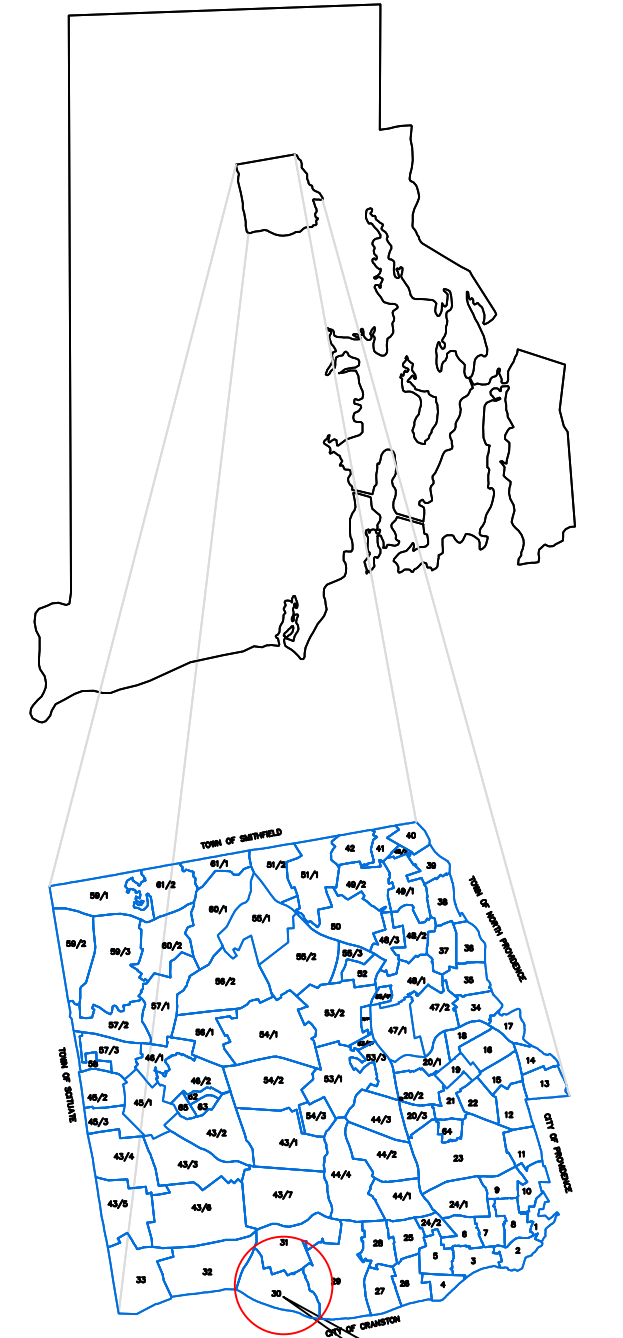
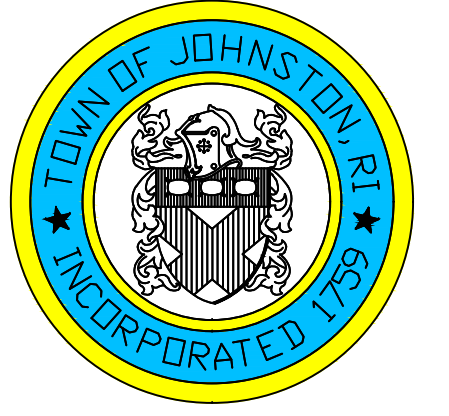
AMENDMENTS					
LOT(S)	FROM	TO	ORDIN. #	DATE	NOTE
3	R2	R40	522	12/12/83	-
70	B2,R40	I	531	4/9/84	WITH STIP.
34,36	R40	I	539	6/11/84	WITH STIP.
82,64,65,69	R40	I	558	2/11/85	-
9,21,56	R40	R20	620	7/21/86	WITH STIP.
38-39	R40	R20	853	12/9/91	-
2,60	R40	I	509	0	-
3,PART 70, 40,73,36,37, 100,63,61, 34	R40	I	796	9/18/89	-



Assessor's Plat Number

30

STATE OF RHODE ISLAND
TOWN OF JOHNSTON
 PROVIDENCE COUNTY
 INCORPORATED 1759
 ASSESSOR'S OFFICE
 1385 HARTFORD AVENUE
 JOHNSTON, RHODE ISLAND
 02919



PLAT INDEX AREA

Scale: 1:200
 Revised By: Benjamin Ng
 Last updated: January 02, 2022
 Date printed: May 22, 2022

For copies of plat maps, please go to the DPW at 100 Irons Avenue Johnston Rhode Island, Thank you.

NOTE: This map was prepared for the use of the Town of Johnston for assessment and illustrative purposes only. It does not represent a survey of the premises. No liability is assumed as to the sufficiency or accuracy of the data delineated hereon.