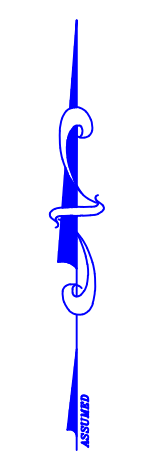
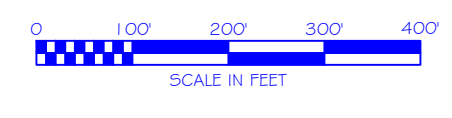
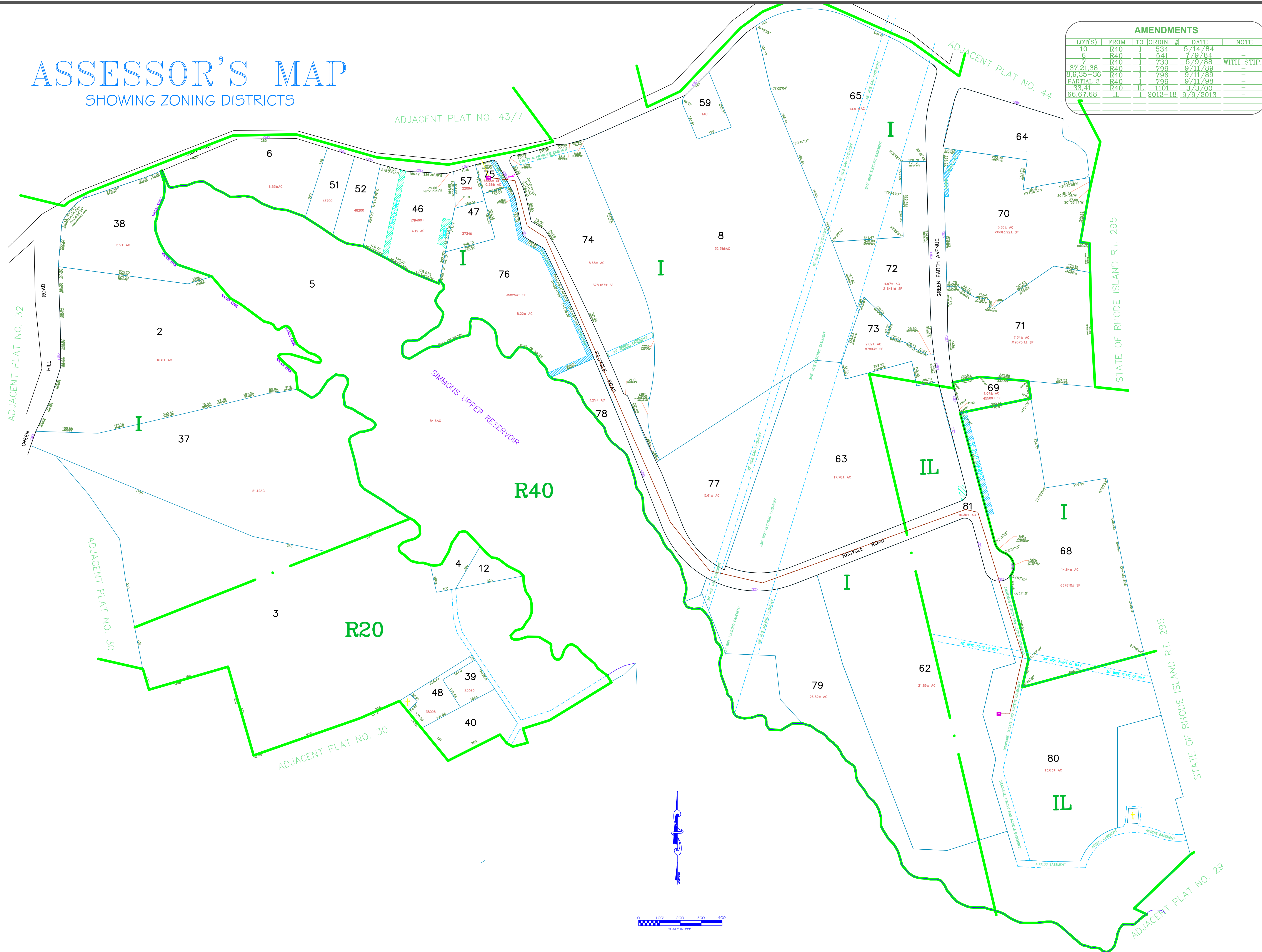


ASSESSOR'S MAP

SHOWING ZONING DISTRICTS

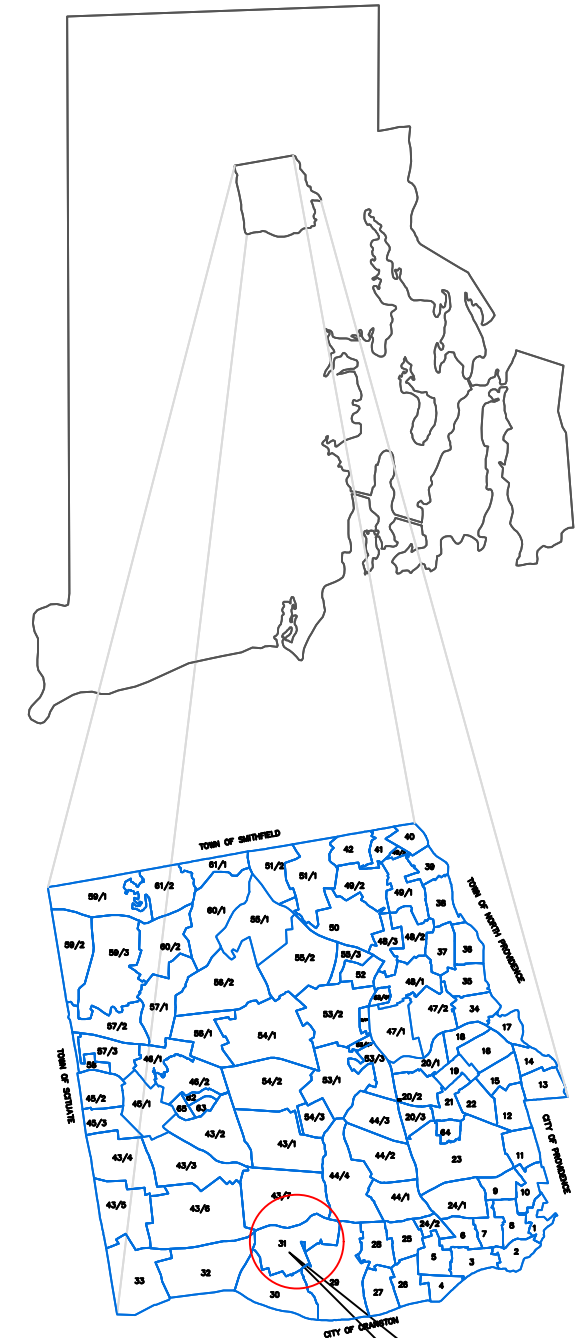
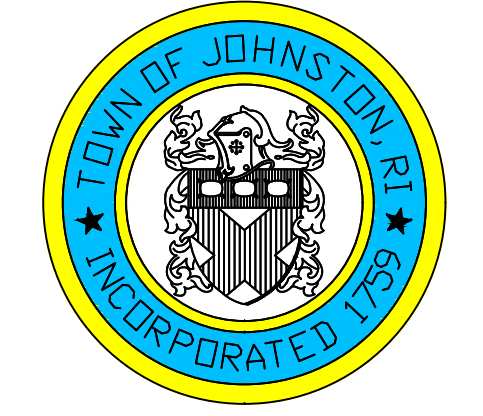
AMENDMENTS					
LOT(S)	FROM	TO	ORDIN. #	DATE	NOTE
10	R40	I	534	5/14/84	
6	R40	I	541	7/9/84	
7	R40	I	730	5/9/88	WITH STIP.
37,21,38	R40	I	796	9/11/89	
8,9,35-36	R40	I	796	9/11/89	
PARTIAL 3	R40	I	796	9/11/89	
33,41	R40	IL	1101	3/3/00	
66,67,68	IL	I	2013-18	9/9/2013	



Assessor's Plat Number

31

STATE OF RHODE ISLAND
TOWN OF JOHNSTON
 PROVIDENCE COUNTY
 INCORPORATED 1759
 ASSESSOR'S OFFICE
 1385 HARTFORD AVENUE
 JOHNSTON, RHODE ISLAND
 02919



PLAT INDEX AREA

Scale: 1:200
 Revised By: Benjamin Ng
 Last updated: January 02, 2022
 Date printed: May 22, 2022

For copies of plat maps, please go to the DPW at 100 Irons Avenue Johnston Rhode Island, Thank you.

NOTE: This map was prepared for the use of the Town of Johnston for assessment and illustrative purposes only. It does not represent a survey of the premises. No liability is assumed as to the sufficiency or accuracy of the data delineated hereon.