

# ASSESSOR'S MAP

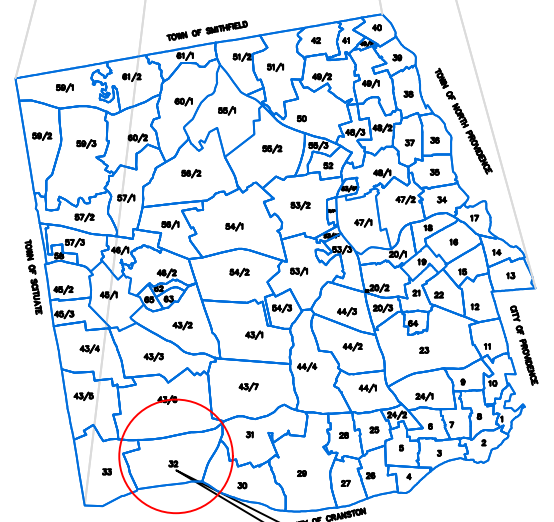
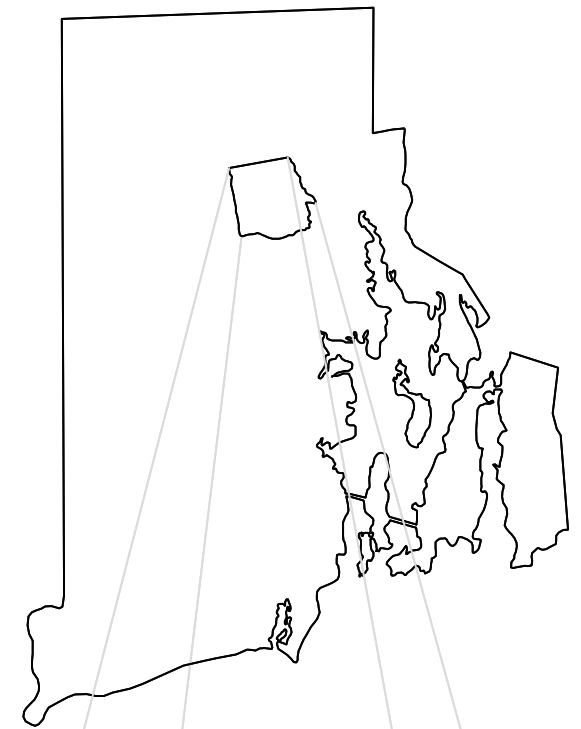
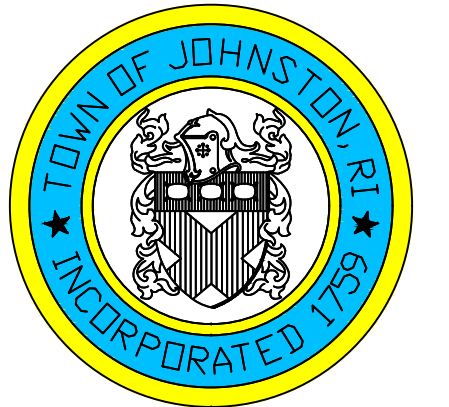
SHOWING ZONING DISTRICTS

Assessor's Plat Number

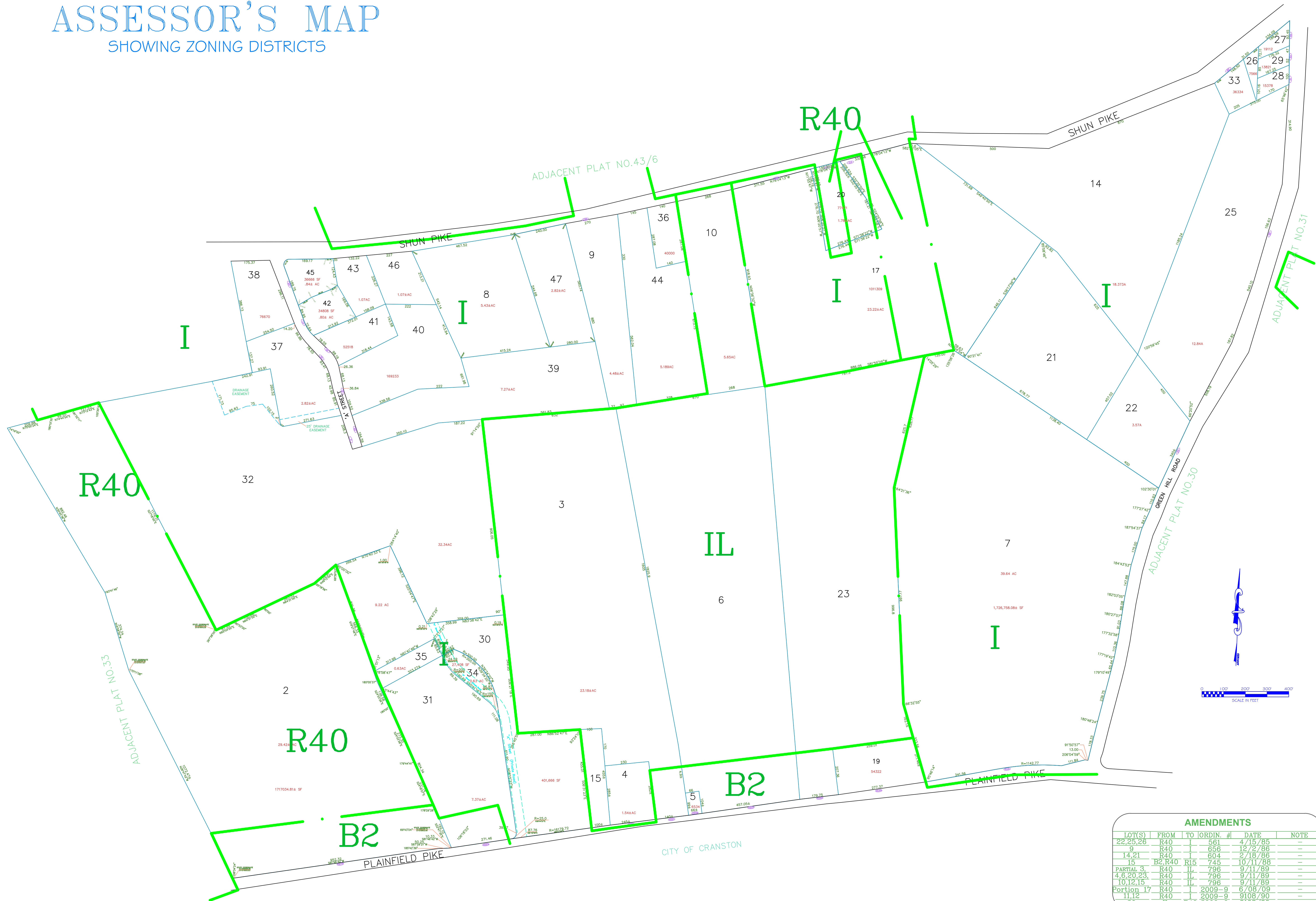
# 32

STATE OF RHODE ISLAND  
TOWN OF JOHNSTON  
PROVIDENCE COUNTY  
INCORPORATED 1759

ASSESSOR'S OFFICE  
1385 HARTFORD AVENUE  
JOHNSTON, RHODE ISLAND  
02919



PLAT INDEX AREA



AMENDMENTS					
LOT(S)	FROM	TO	ORDIN. #	DATE	NOTE
22,25,26	R40	I	561	4/15/85	-
9	R40	I	656	12/2/86	-
14,21	R40	I	604	2/18/86	-
15	B2,R40	R15	745	10/11/88	-
PARTIAL 3,	R40	IL	796	9/11/89	-
4,6,20,23,	R40	IL	796	9/11/89	-
10,12,15	R40	IL	796	9/11/89	-
Portion 17	R40	I	2009-9	6/08/09	-
11,12	R40	I	2009-9	9/08/90	-
20	IL	R40	2009-9	9/08/90	-

Scale: 1:200

Revised By: Benjamin Ng

Last updated: January 02, 2022

Date printed: May 22, 2022

For copies of plat maps, please go to the DPW at 100 Irons Avenue Johnston Rhode Island, Thank you.

NOTE: This map was prepared for the use of the Town of Johnston for assessment and illustrative purposes only. It does not represent a survey of the premises. No liability is assumed as to the sufficiency or accuracy of the data delineated hereon.