

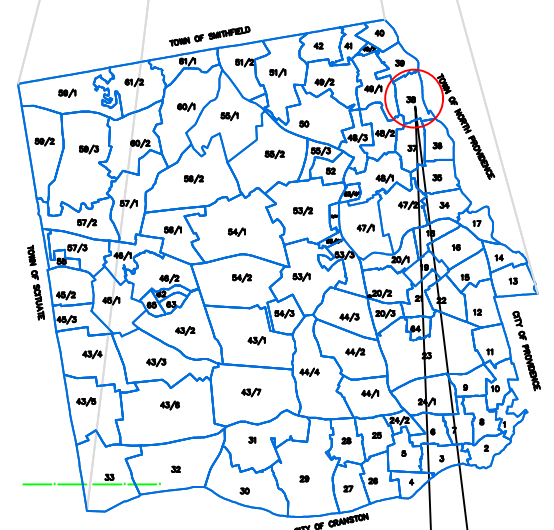
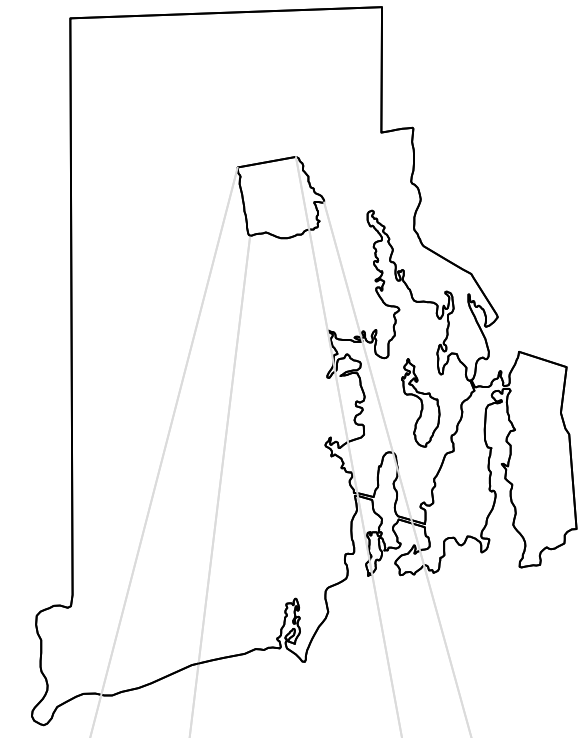
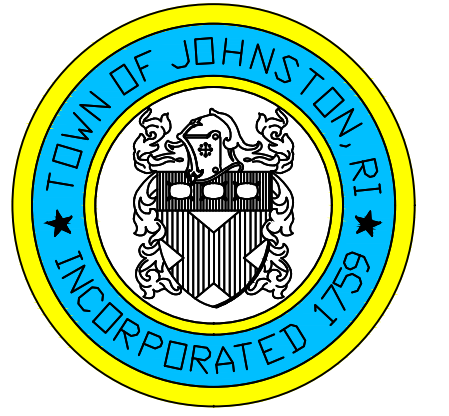
ASSESSOR'S MAP

SHOWING ZONING DISTRICTS

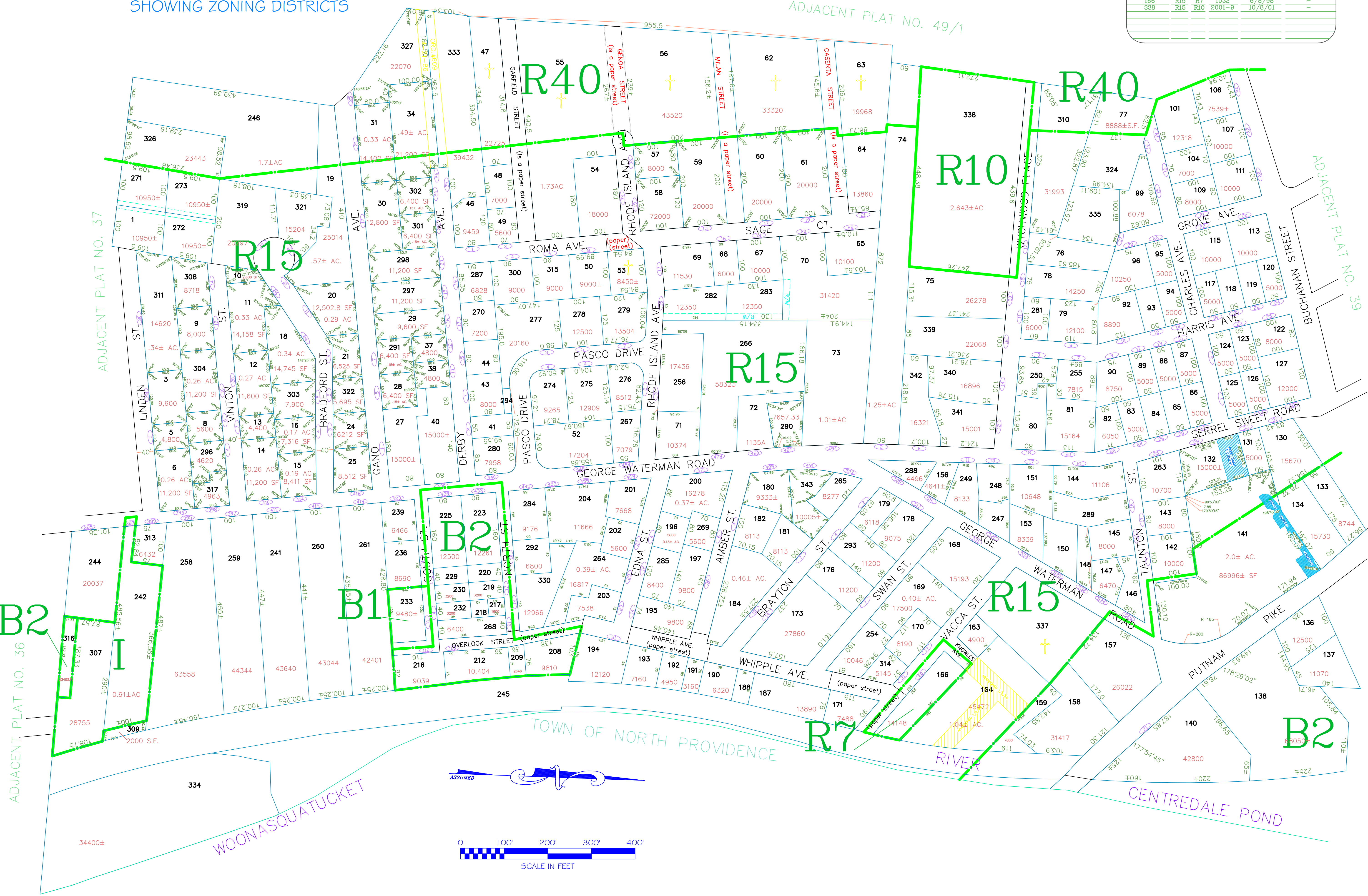
AMENDMENTS					
LOT(S)	FROM	TO	ORDIN. #	DATE	NOTE
233-235	R15	B1	827	7/21/86	WITH STIP.
307	R15	B1	850	10/20/86	-
38,58,616	R15	B2	645	10/12/86	-
242,313	R15	R7	677	3/18/87	WITH STIP.
166	R15	R7	1032	6/6/98	-
338	R15	R10	2001-9	10/8/01	-

Assessor's Plat Number
38

STATE OF RHODE ISLAND
TOWN OF JOHNSTON
PROVIDENCE COUNTY
INCORPORATED 1759
ASSESSOR'S OFFICE
1385 HARTFORD AVENUE
JOHNSTON, RHODE ISLAND
02919



PLAT INDEX AREA



Scale: 1:100
Revised By: Benjamin Ng
Last updated: January 02, 2022
Date printed: May 22, 2022

For copies of plat maps, please go to the DPW at 100 Irons Avenue Johnston Rhode Island, Thank you.

NOTE: This map was prepared for the use of the Town of Johnston for assessment and illustrative purposes only. It does not represent a survey of the premises. No liability is assumed as to the sufficiency or accuracy of the data delineated hereon.