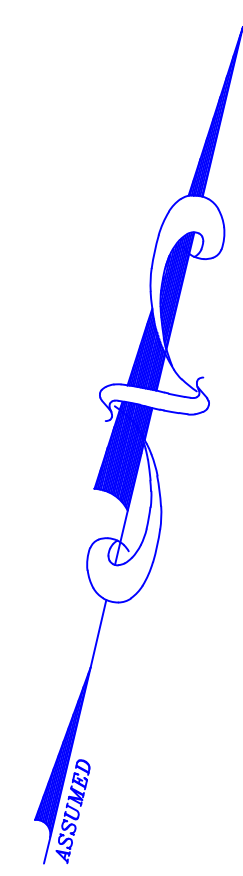
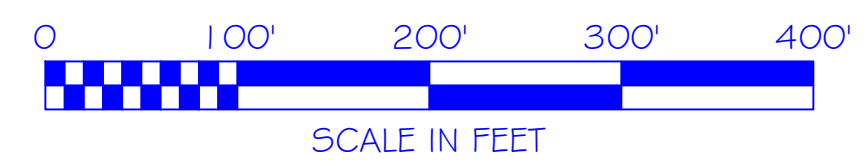
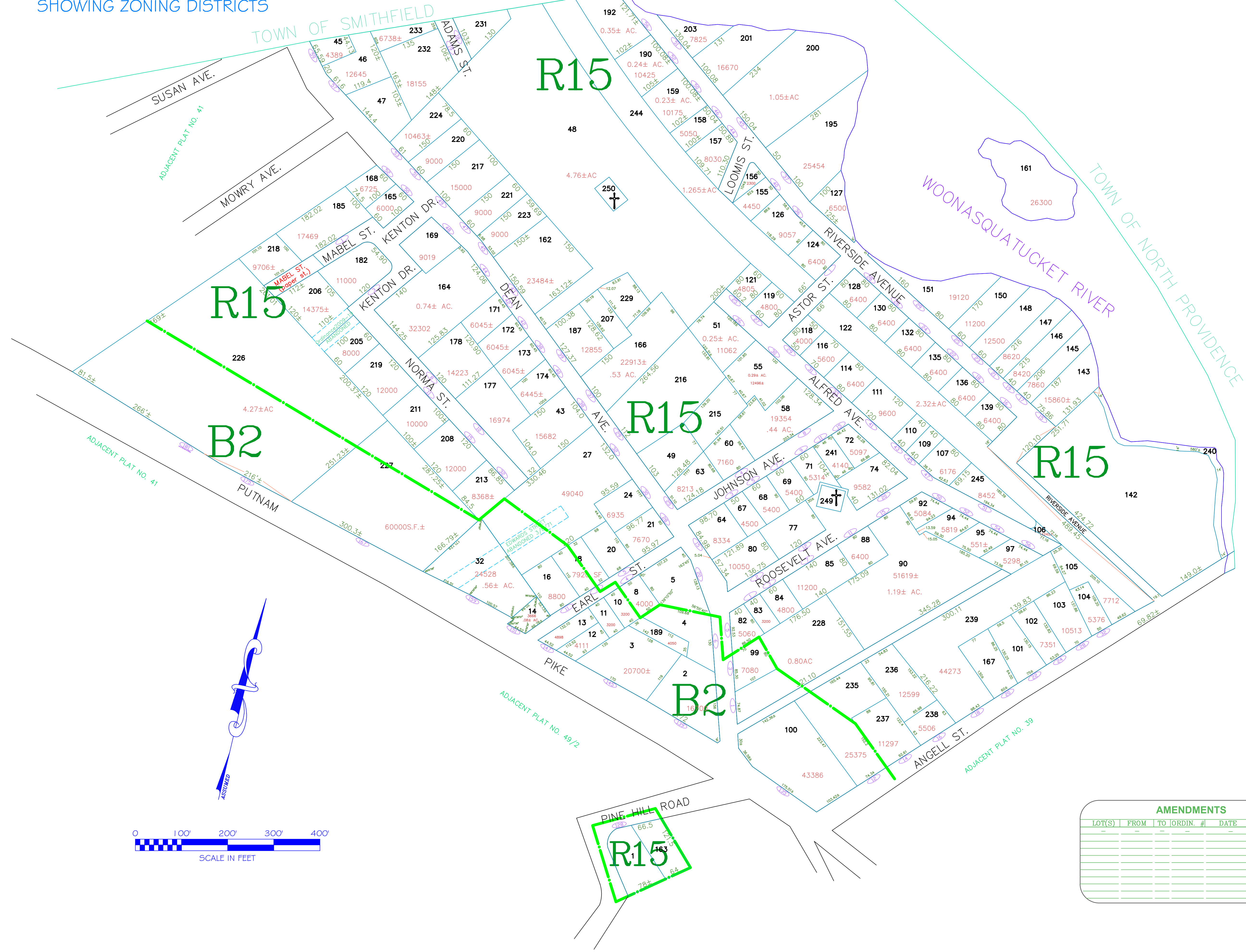


# ASSESSOR'S MAP

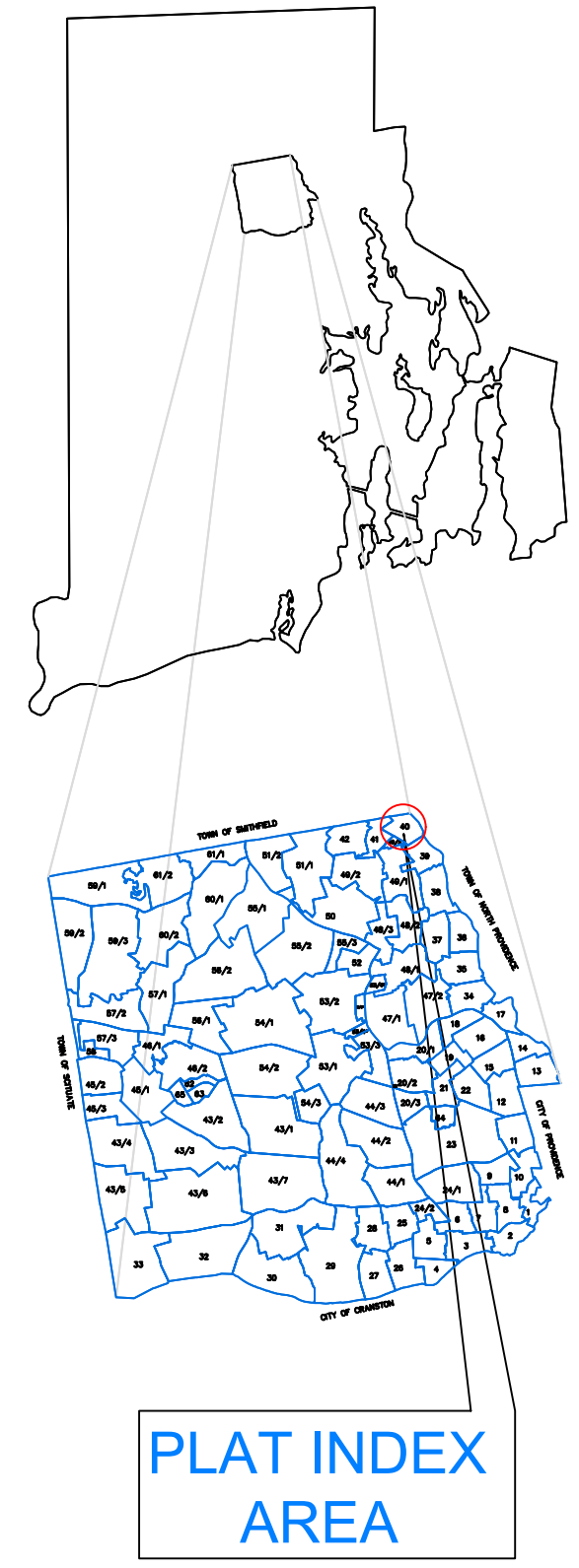
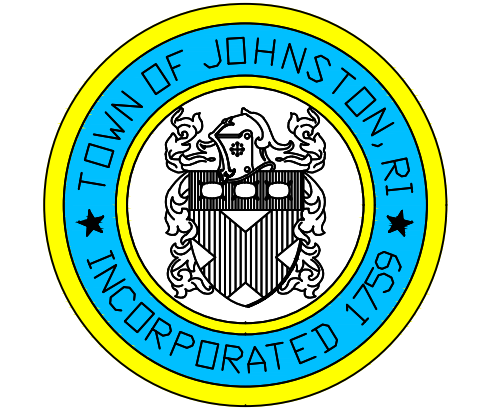
SHOWING ZONING DISTRICTS



AMENDMENTS					
LOT(S)	FROM	TO	ORDIN. #	DATE	NOTE

Assessor's Plat Number  
**40**

STATE OF RHODE ISLAND  
**TOWN OF JOHNSTON**  
PROVIDENCE COUNTY  
INCORPORATED 1759  
ASSESSOR'S OFFICE  
1385 HARTFORD AVENUE  
JOHNSTON, RHODE ISLAND  
02919



Scale: 1:100  
Revised By: Benjamin Ng  
Last updated: January 02, 2022  
Date printed: May 22, 2022

For copies of plat maps, please go to the DPW at 100 Irons Avenue Johnston Rhode Island, Thank you.  
  
NOTE: This map was prepared for the use of the Town of Johnston for assessment and illustrative purposes only. It does not represent a survey of the premises. No liability is assumed as to the sufficiency or accuracy of the data delineated hereon.