

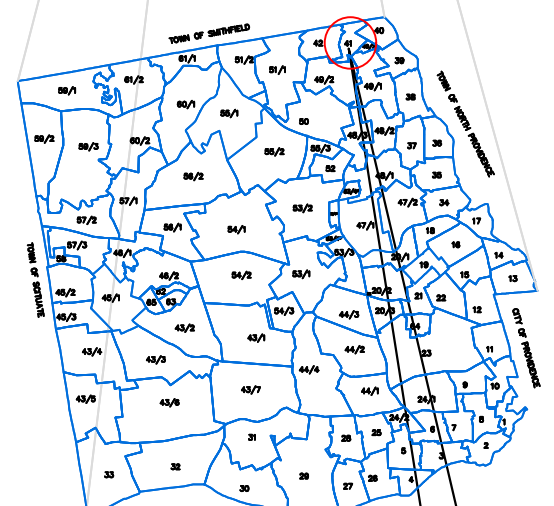
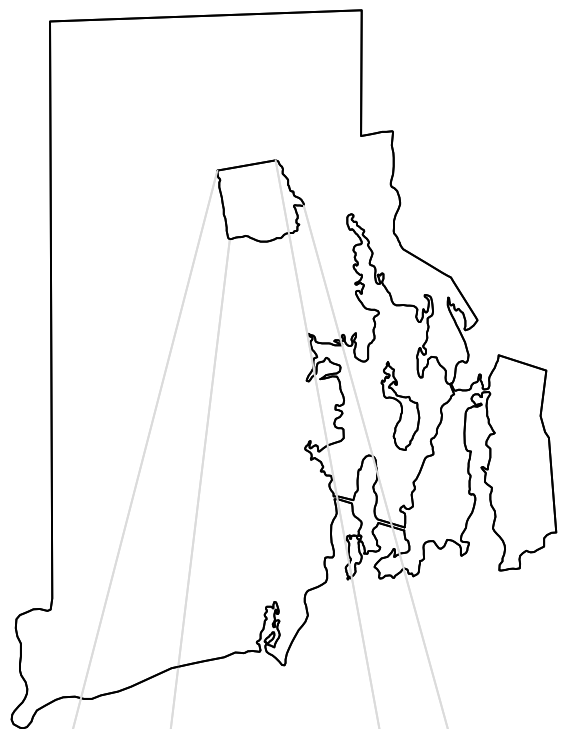
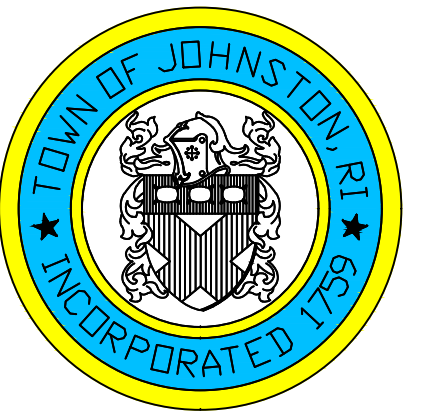
# ASSESSOR'S MAP

SHOWING ZONING DISTRICTS

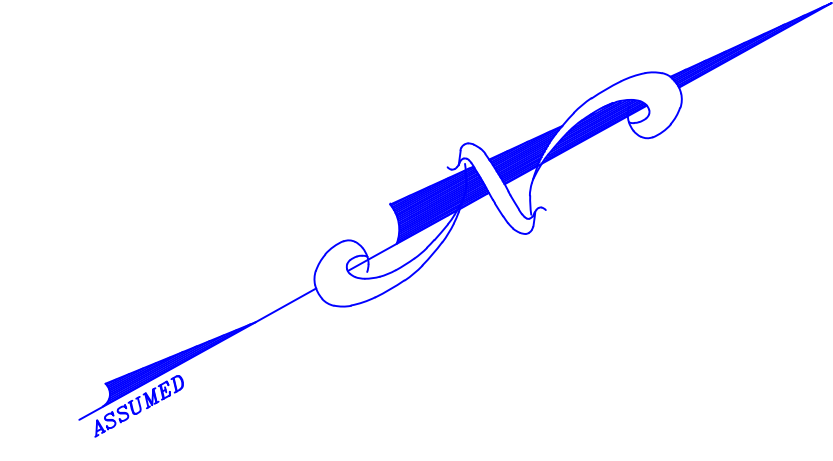
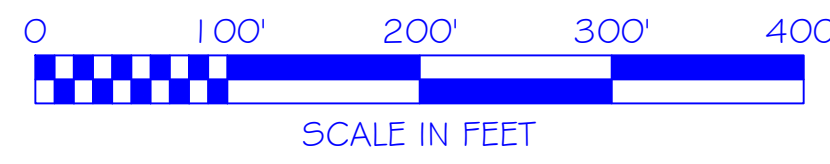
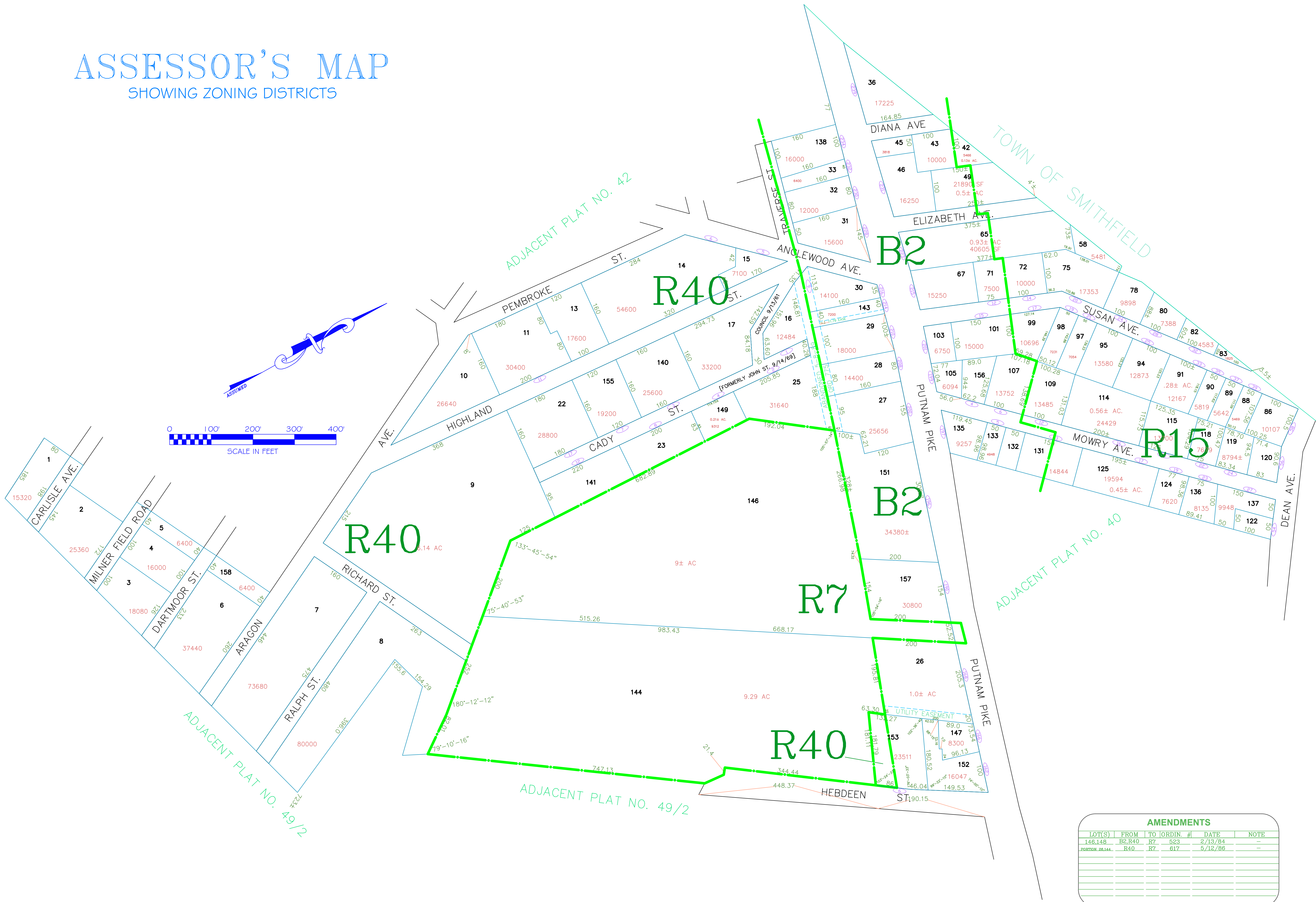
Assessor's Plat Number

# 41

STATE OF RHODE ISLAND  
**TOWN OF JOHNSTON**  
 PROVIDENCE COUNTY  
 INCORPORATED 1759  
 ASSESSOR'S OFFICE  
 1385 HARTFORD AVENUE  
 JOHNSTON, RHODE ISLAND  
 02919



PLAT INDEX AREA



AMENDMENTS					
LOT(S)	FROM	TO	ORDIN. #	DATE	NOTE
146,148	B2,R40	R7	523	2/13/84	-
PORTION 26144	R40	R7	617	5/12/86	-

Scale: 1:100  
 Revised By: Benjamin Ng  
 Last updated: January 02, 2022  
 Date printed: May 22, 2022

For copies of plat maps, please go to the DPW at 100 Irons Avenue Johnston Rhode Island, Thank you.

NOTE: This map was prepared for the use of the Town of Johnston for assessment and illustrative purposes only. It does not represent a survey of the premises. No liability is assumed as to the sufficiency or accuracy of the data delineated hereon.