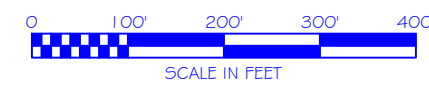
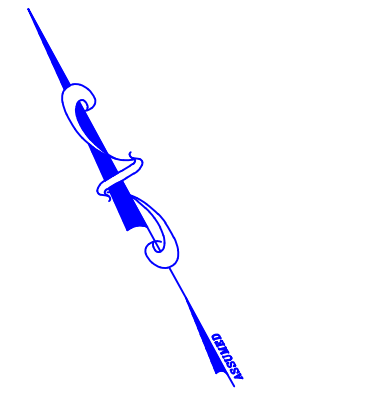


ASSESSOR'S MAP

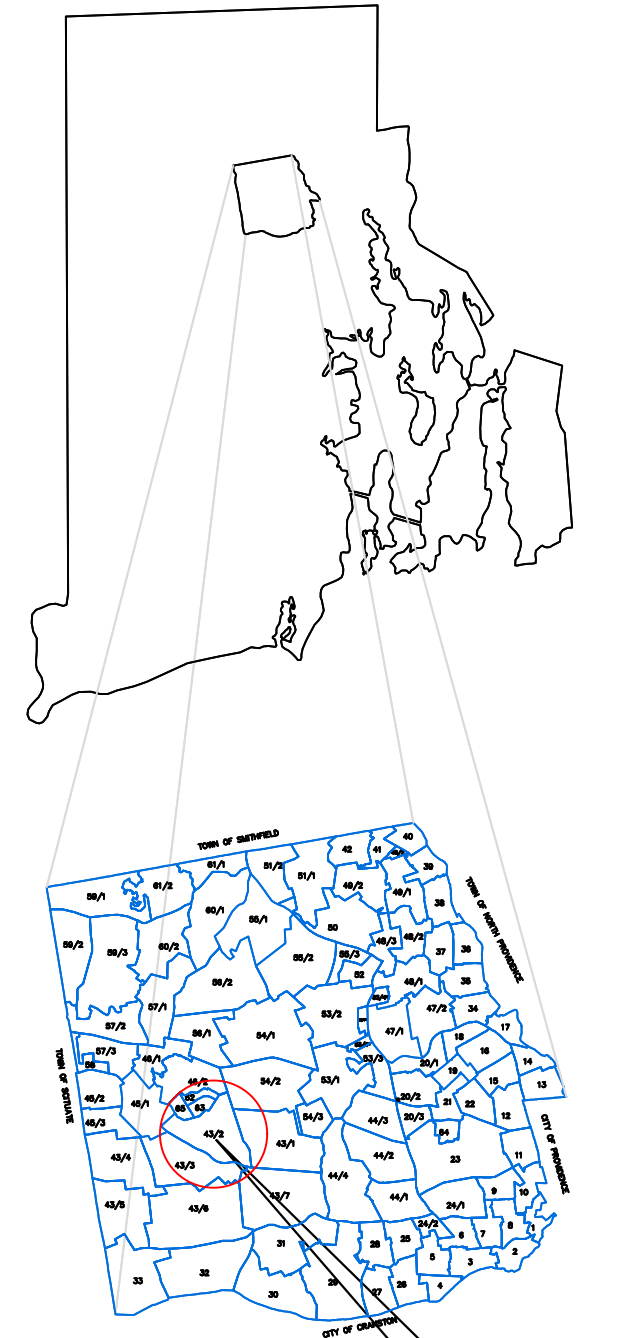
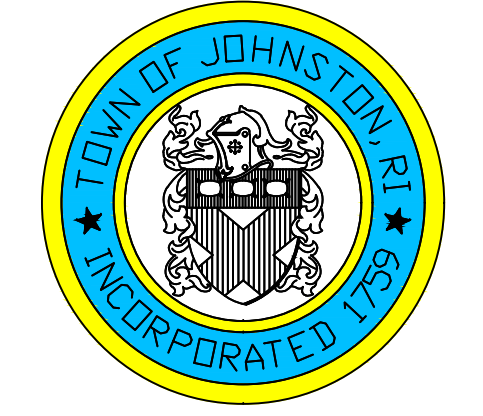
SHOWING ZONING DISTRICTS



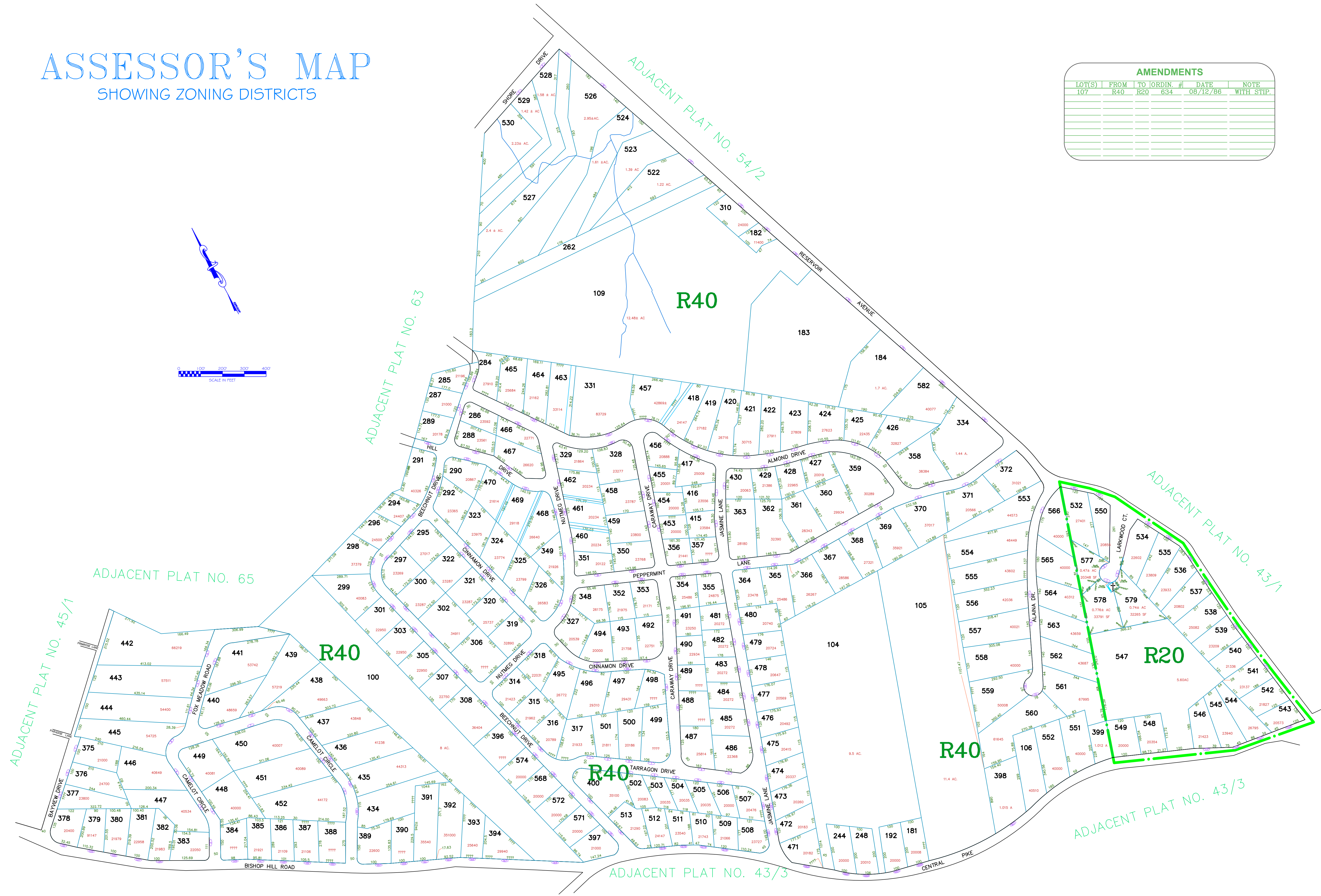
AMENDMENTS					
LOT(S)	FROM	TO	ORDIN. #	DATE	NOTE
107	R40	R20	634	08/12/86	WITH STIP.

Assessor's Plat Number
43/2

STATE OF RHODE ISLAND
TOWN OF JOHNSTON
PROVIDENCE COUNTY
INCORPORATED 1759
ASSESSOR'S OFFICE
1385 HARTFORD AVENUE
JOHNSTON, RHODE ISLAND
02919



PLAT INDEX AREA



Scale: 1:200
Revised By: Benjamin Ng
Last updated: January 02, 2022
Date printed: May 24, 2021

For copies of plat maps, please go to the DPW at 100 Irons Avenue Johnston Rhode Island, Thank you.

NOTE: This map was prepared for the use of the Town of Johnston for assessment and illustrative purposes only. It does not represent a survey of the premises. No liability is assumed as to the sufficiency or accuracy of the data delineated hereon.