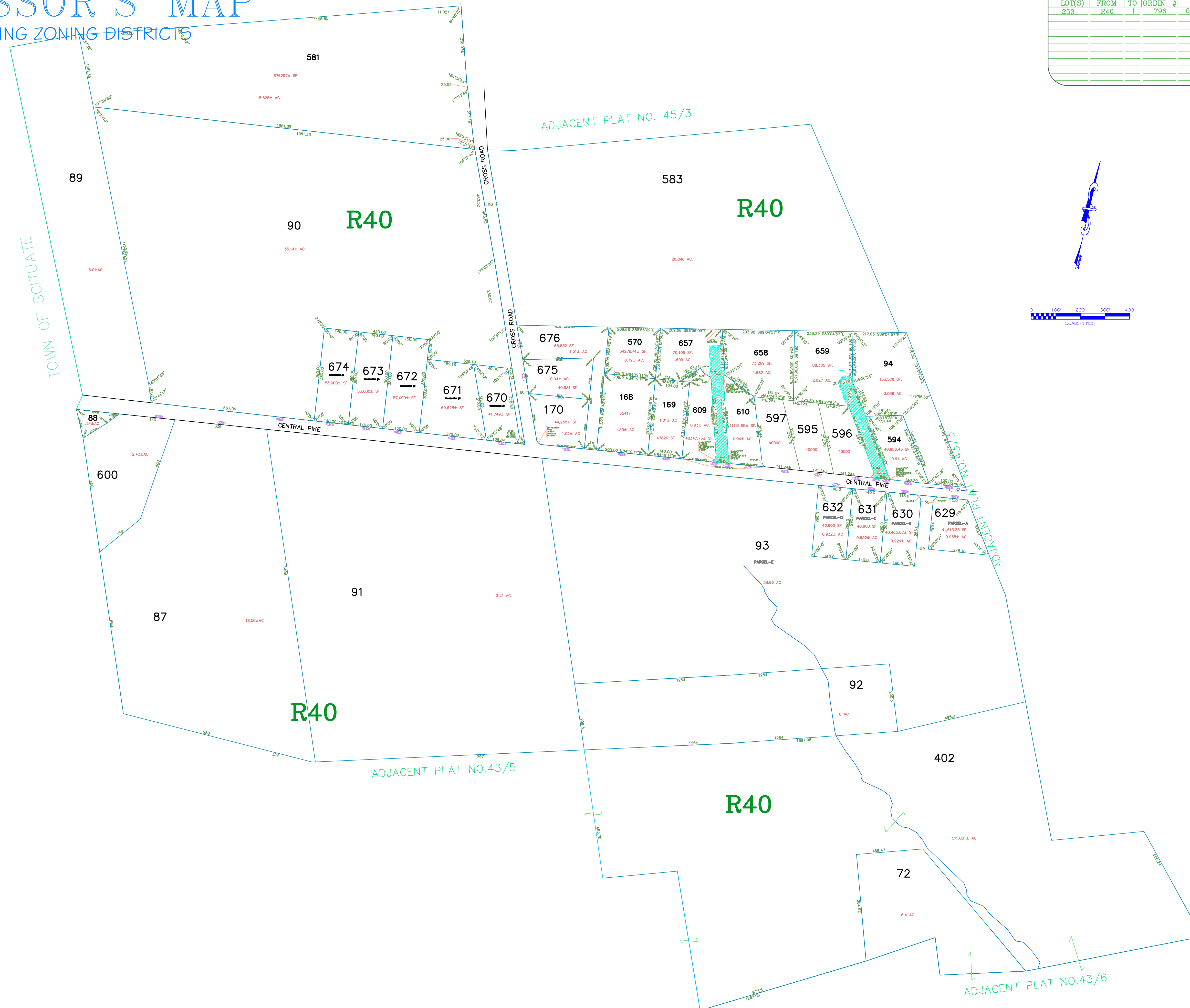
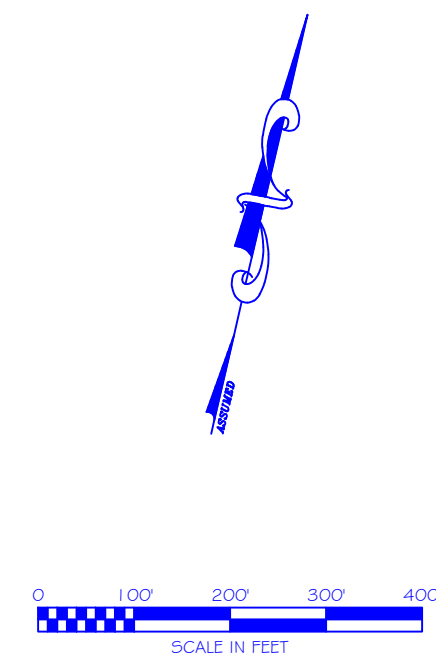


# ASSESSOR'S MAP

SHOWING ZONING DISTRICTS

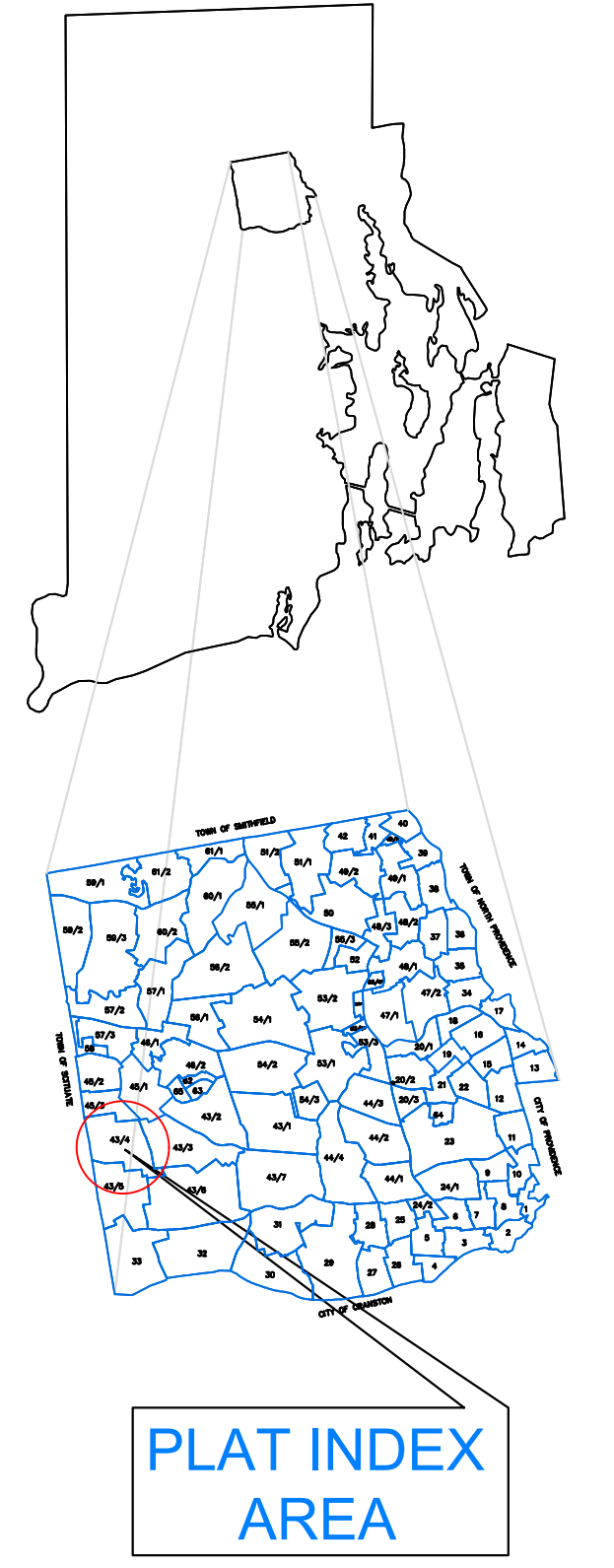
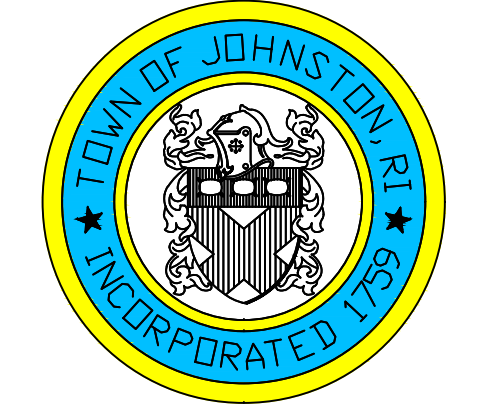


AMENDMENTS					
LOT(S)	FROM	TO	ORDIN. #	DATE	NOTE
253	R40	1	796	09/11/89	WITH STIP.



Assessor's Plat Number  
**43/4**

STATE OF RHODE ISLAND  
**TOWN OF JOHNSTON**  
PROVIDENCE COUNTY  
INCORPORATED 1759  
ASSESSOR'S OFFICE  
1385 HARTFORD AVENUE  
JOHNSTON, RHODE ISLAND  
02919



Scale: 1:200  
Revised By: Benjamin Ng  
Last updated: January 02, 2022  
Date printed: May 03, 2022

For copies of plat maps, please go to the DPW at 100 Irons Avenue Johnston Rhode Island, Thank you.  
NOTE: This map was prepared for the use of the Town of Johnston for assessment and illustrative purposes only. It does not represent a survey of the premises. No liability is assumed as to the sufficiency or accuracy of the data delineated hereon.