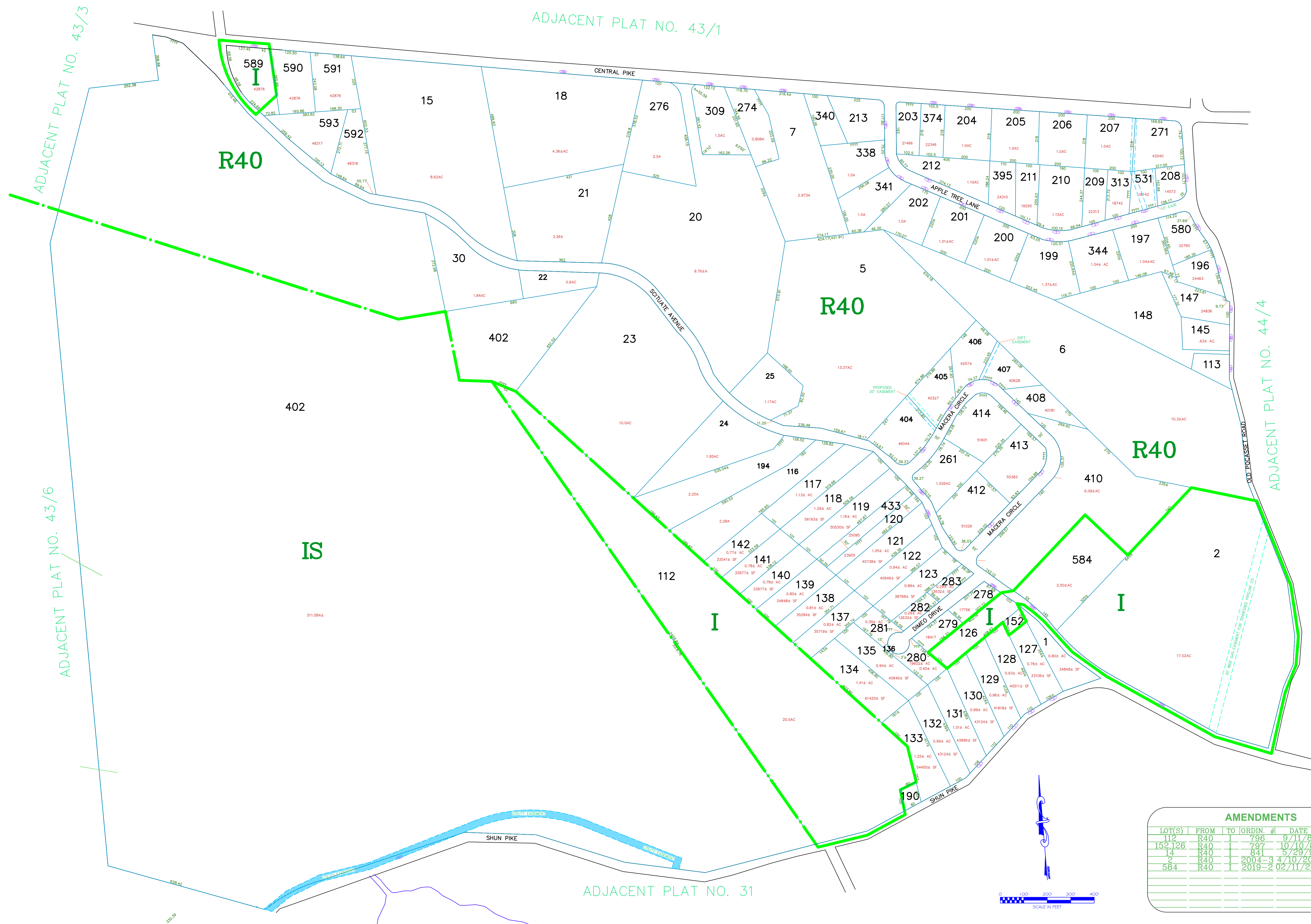


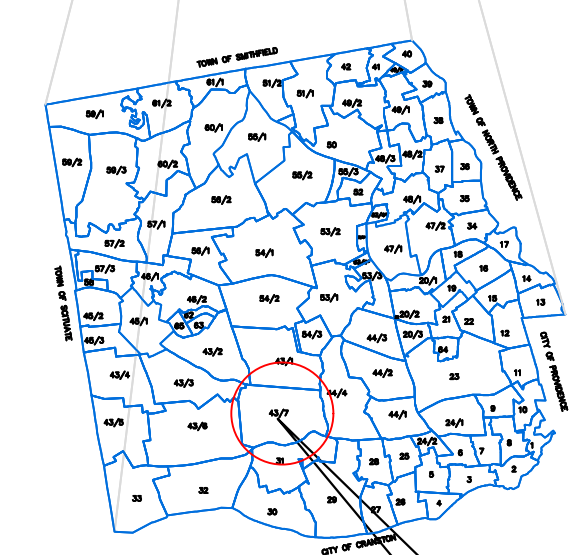
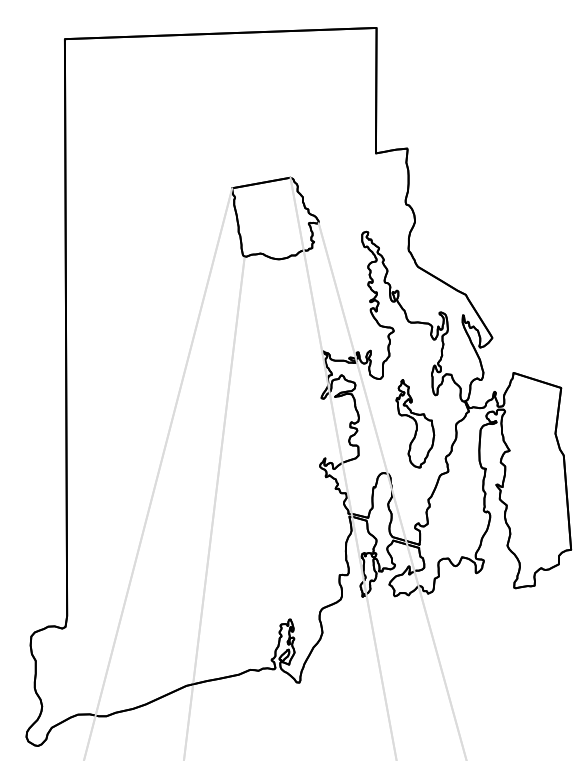
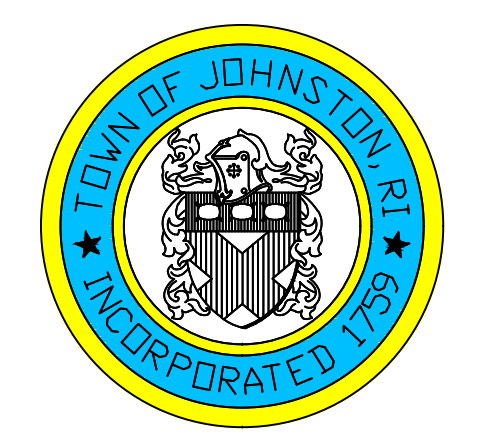
ASSESSOR'S MAP

SHOWING ZONING DISTRICTS



Assessor's Plat Number
43/7

STATE OF RHODE ISLAND
TOWN OF JOHNSTON
PROVIDENCE COUNTY
INCORPORATED 1759
ASSESSOR'S OFFICE
1385 HARTFORD AVENUE
JOHNSTON, RHODE ISLAND
02919



PLAT INDEX AREA

Scale: 1:200
Revised By: Benjamin Ng
Last updated: January 02, 2022
Date printed: May 03, 2022

AMENDMENTS					
LOT(S)	FROM	TO	ORDIN. #	DATE	NOTE
112	R40	I	796	9/11/89	
152, 126	R40	I	797	10/10/89	
14	R40	I	841	5/29/91	
2	R40	I	2004-3	4/10/2006	WITH STIP.
584	R40	I	2019-2	02/11/2019	

For copies of plat maps, please go to the DPW at 100 Irons Avenue Johnston Rhode Island, Thank you.

NOTE: This map was prepared for the use of the Town of Johnston for assessment and illustrative purposes only. It does not represent a survey of the premises. No liability is assumed as to the sufficiency or accuracy of the data delineated hereon.