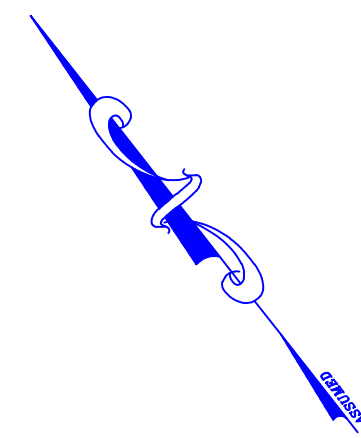
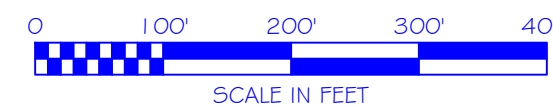
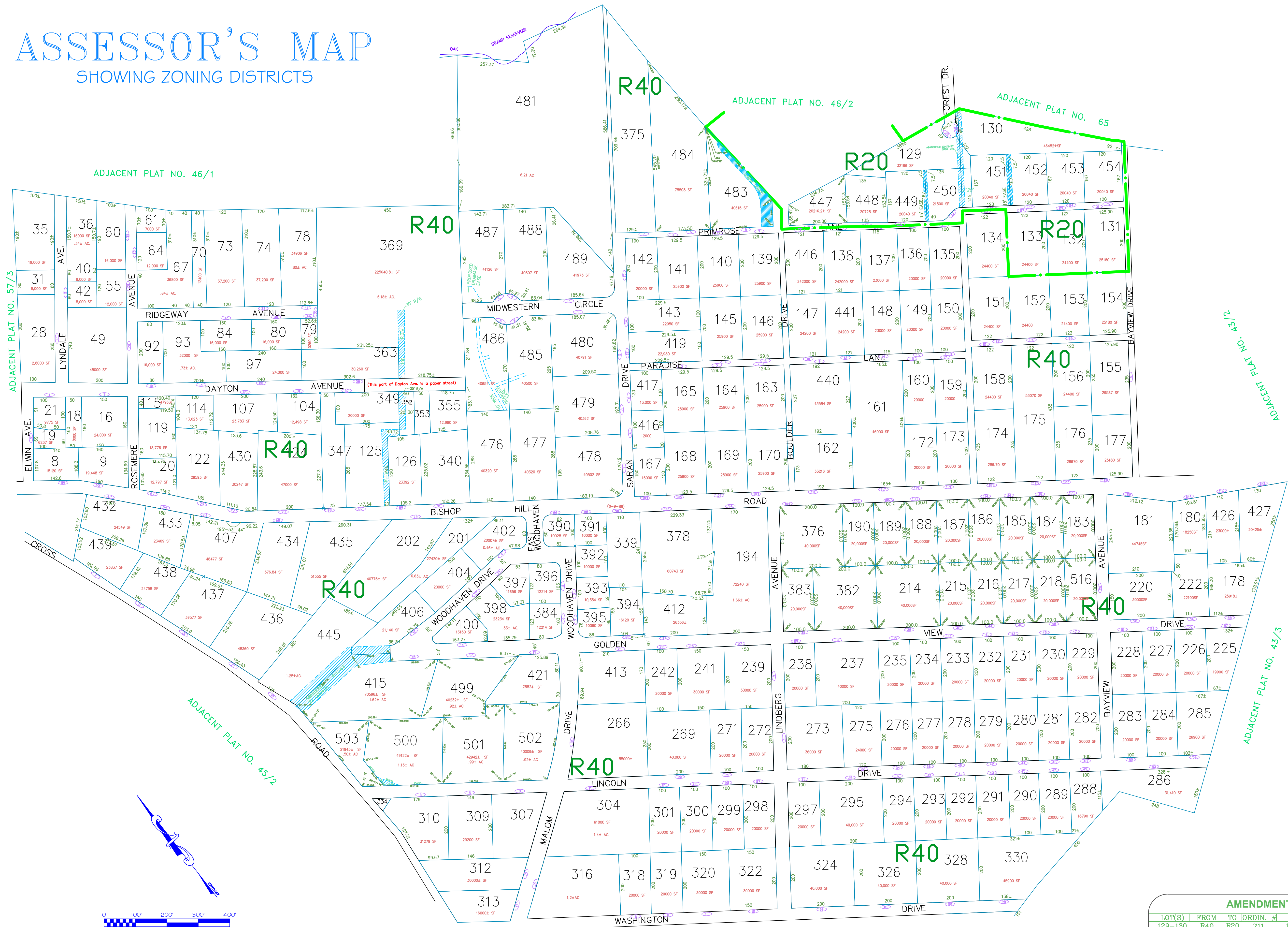


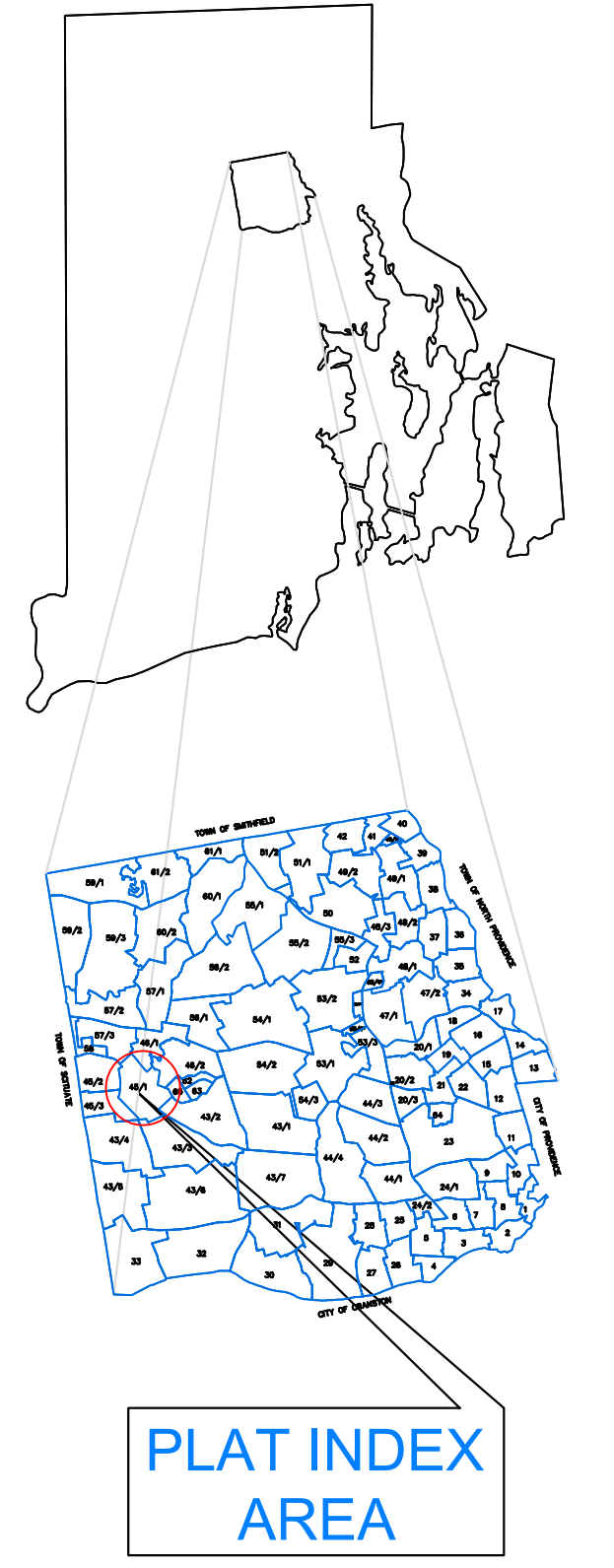
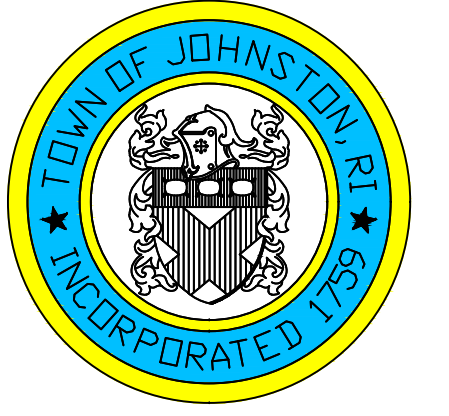
ASSESSOR'S MAP

SHOWING ZONING DISTRICTS



Assessor's Plat Number
45/1

STATE OF RHODE ISLAND
TOWN OF JOHNSTON
PROVIDENCE COUNTY
INCORPORATED 1759
ASSESSOR'S OFFICE
1385 HARTFORD AVENUE
JOHNSTON, RHODE ISLAND
02919



Scale: 1:150
Revised By: Benjamin Ng
Last updated: January 02, 2022
Date printed: May 04, 2022

AMENDMENTS					
LOT(S)	FROM	TO	ORDIN. #	DATE	NOTE
129-130	R40	R20	711	12/15/87	-
131-132	R40	R20	642	7/8/91	-

For copies of plat maps, please go to the DPW at 100 Irons Avenue Johnston Rhode Island, Thank you.

NOTE: This map was prepared for the use of the Town of Johnston for assessment and illustrative purposes only. It does not represent a survey of the premises. No liability is assumed as to the sufficiency or accuracy of the data delineated hereon.