

ASSESSOR'S MAP

SHOWING ZONING DISTRICTS

ADJACENT PLAT 48/3

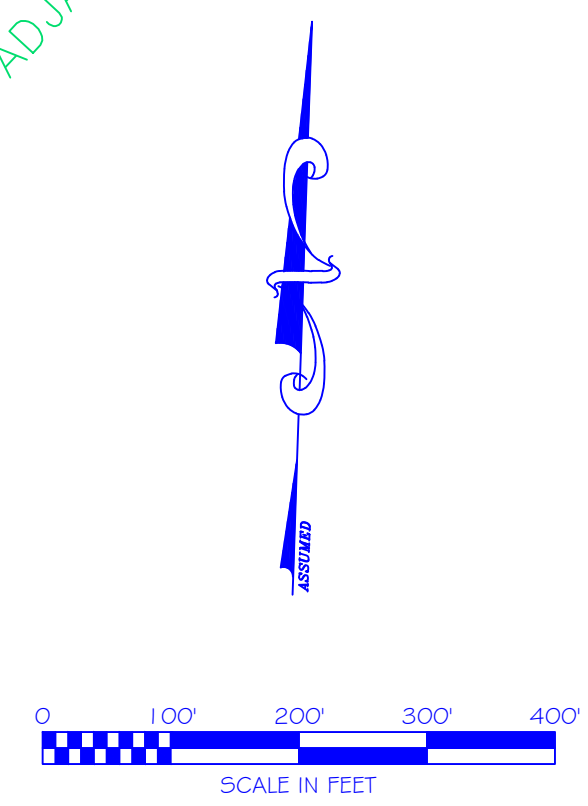
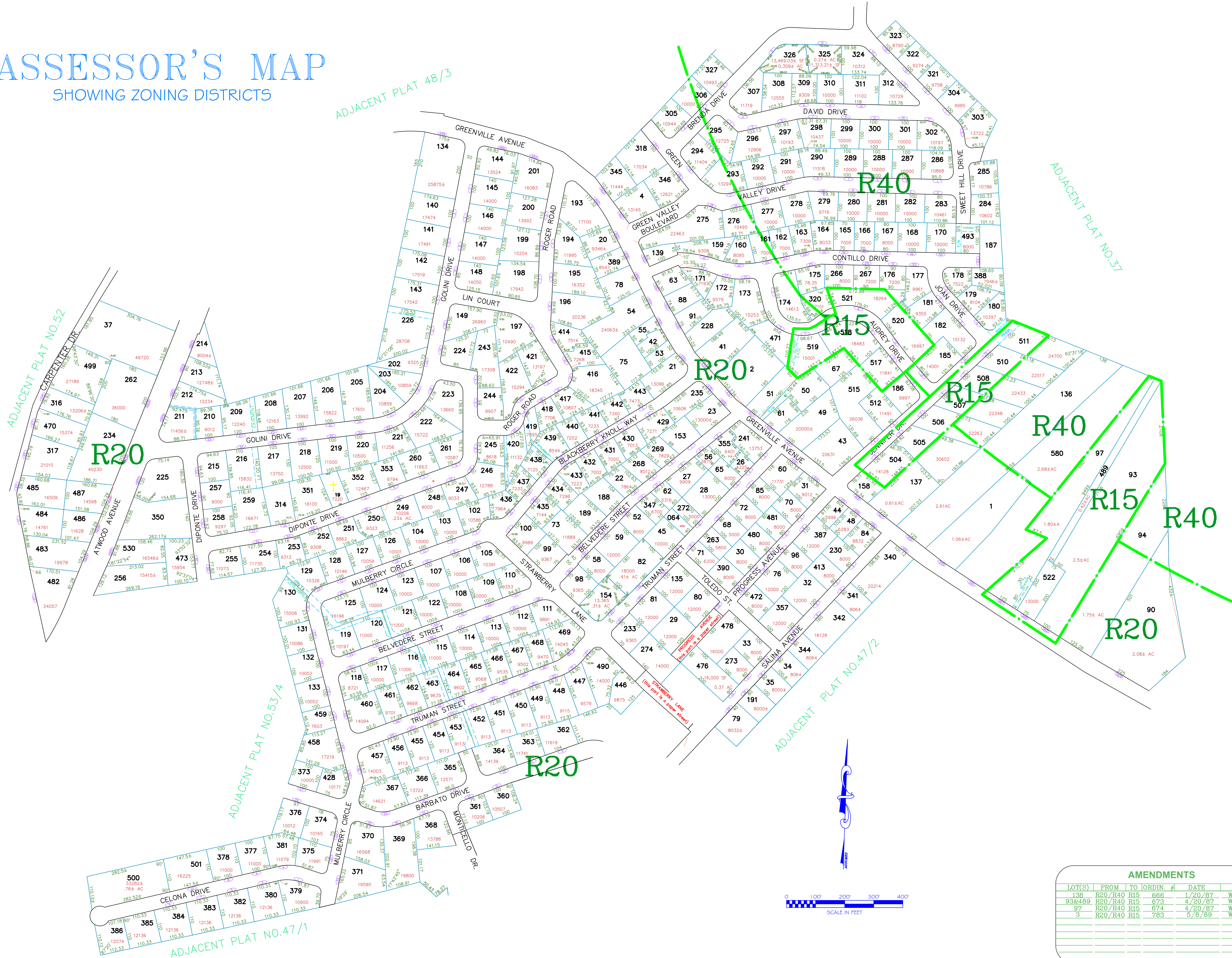
ADJACENT PLAT NO.52

ADJACENT PLAT NO.37

ADJACENT PLAT NO.53/4

ADJACENT PLAT NO.47/2

ADJACENT PLAT NO.47/1



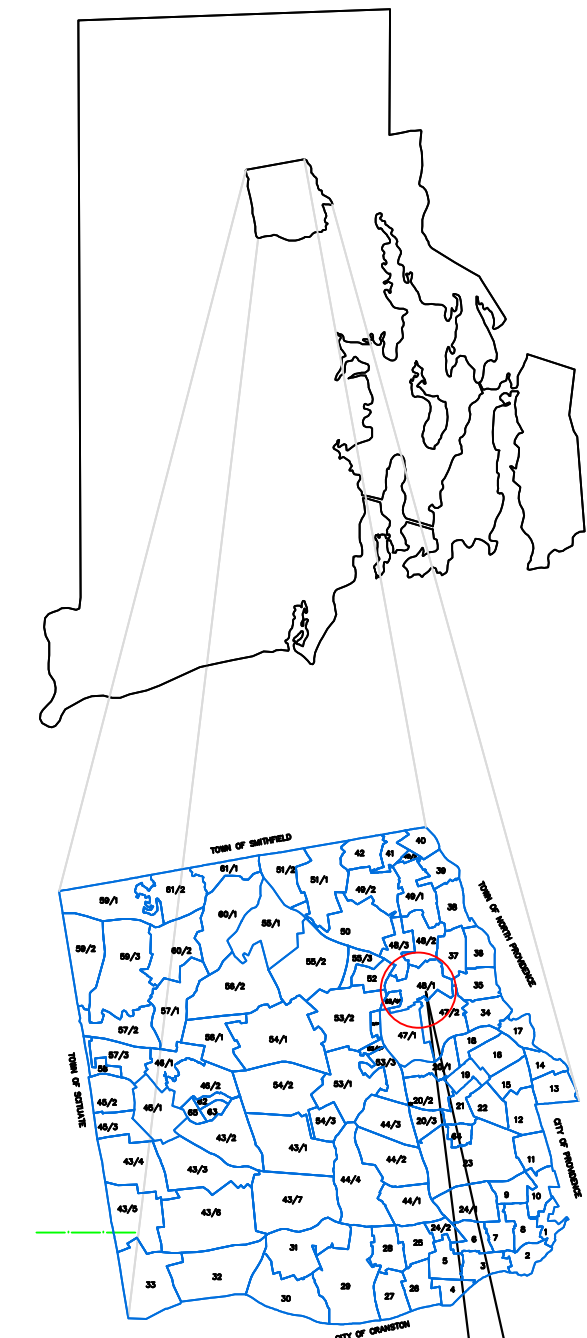
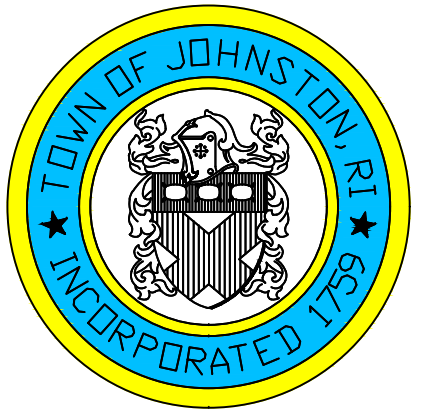
AMENDMENTS					
LOT(S)	FROM	TO	ORDIN. #	DATE	NOTE
138	R20/R40	R15	666	1/20/87	WITH STIP
93&489	R20/R40	R15	673	4/20/87	WITH STIP
97	R20/R40	R15	674	4/20/87	WITH STIP
3	R20/R40	R15	783	5/8/89	WITH STIP

Assessor's Plat Number

48/1

STATE OF RHODE ISLAND
TOWN OF JOHNSTON
PROVIDENCE COUNTY
INCORPORATED 1759

ASSESSOR'S OFFICE
1385 HARTFORD AVENUE
JOHNSTON, RHODE ISLAND
02919



PLAT INDEX AREA

Scale: 1:150
Revised By: Benjamin Ng
Last updated: January 02, 2022
Date printed: May 10, 2022

For copies of plat maps, please go to the DPW at 100 Irons Avenue Johnston Rhode Island, Thank you.

NOTE: This map was prepared for the use of the Town of Johnston for assessment and illustrative purposes only. It does not represent a survey of the premises. No liability is assumed as to the sufficiency or accuracy of the data delineated hereon.