

ASSESSOR'S MAP

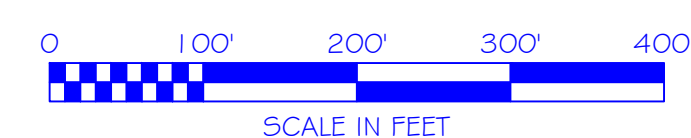
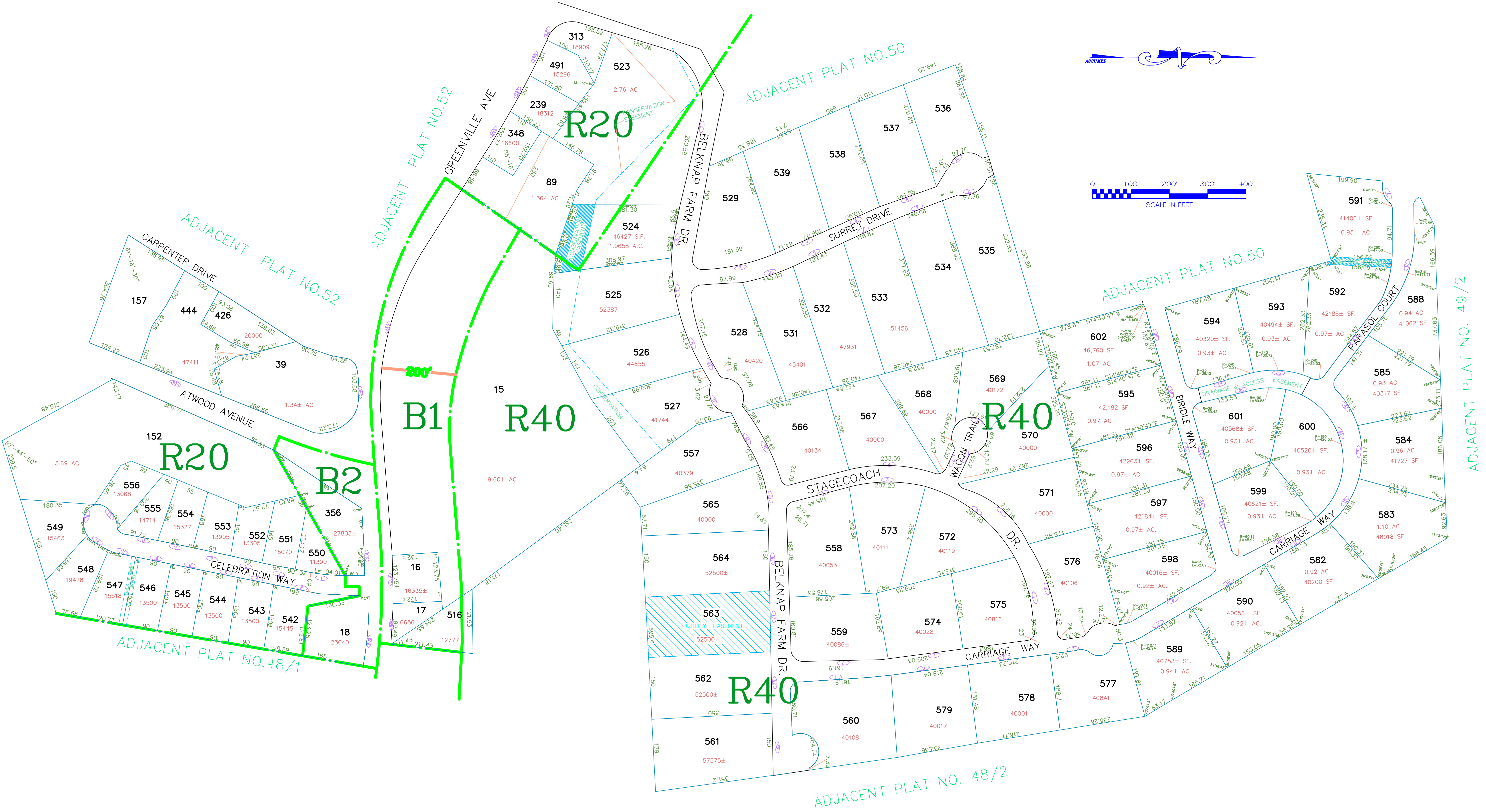
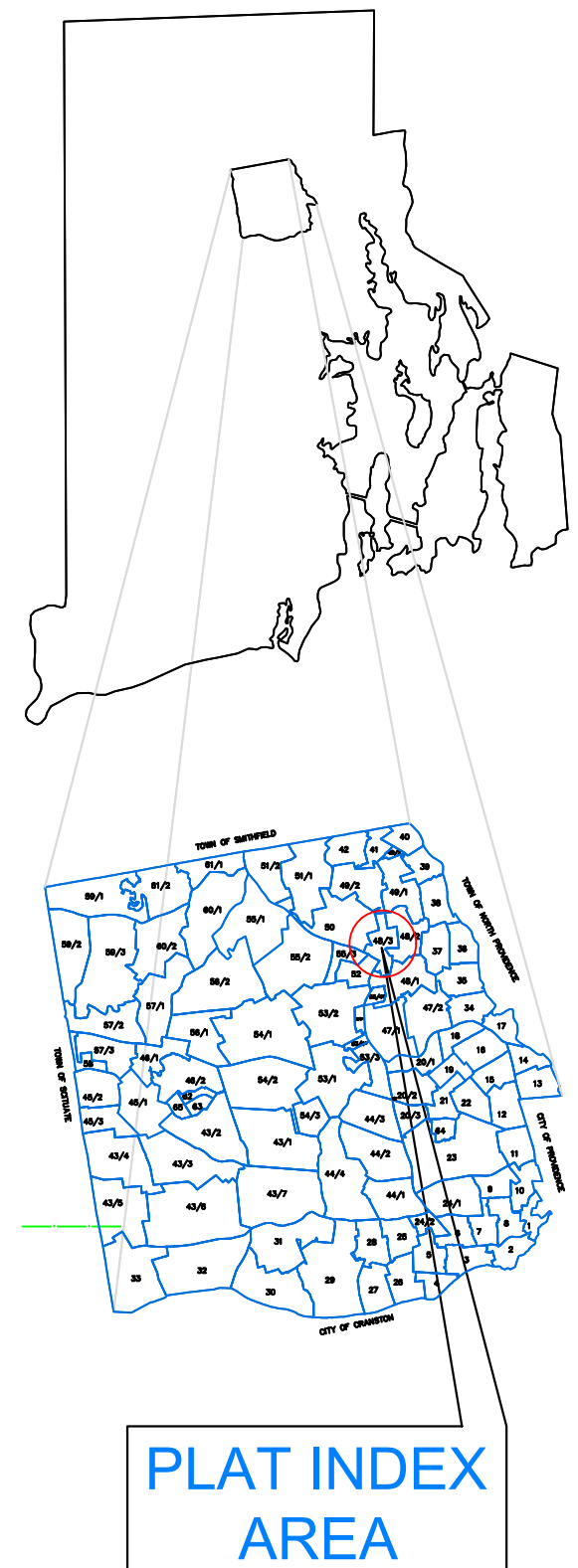
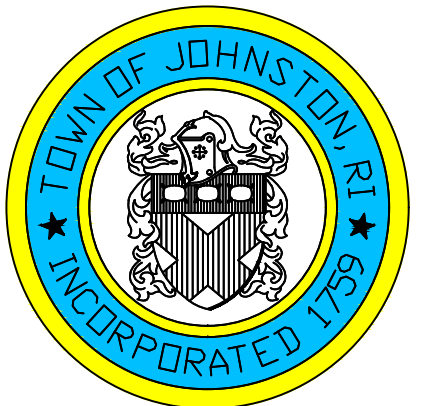
SHOWING ZONING DISTRICTS

Assessor's Plat Number

48/3

STATE OF RHODE ISLAND
TOWN OF JOHNSTON
PROVIDENCE COUNTY
INCORPORATED 1759

ASSESSOR'S OFFICE
1385 HARTFORD AVENUE
JOHNSTON, RHODE ISLAND
02919



AMENDMENTS					
LOT(S)	FROM	TO	ORDIN. #	DATE	NOTE
152	B2	R20	735	6/13/88	WITH STIP.

Scale: 1:125
 Revised By: Benjamin Ng
 Last updated: January 02, 2022
 Date printed: May 17, 2022

For copies of plat maps, please go to the DPW at 100 Irons Avenue Johnston Rhode Island, Thank you.

NOTE: This map was prepared for the use of the Town of Johnston for assessment and illustrative purposes only. It does not represent a survey of the premises. No liability is assumed as to the sufficiency or accuracy of the data delineated hereon.