

ASSESSOR'S MAP

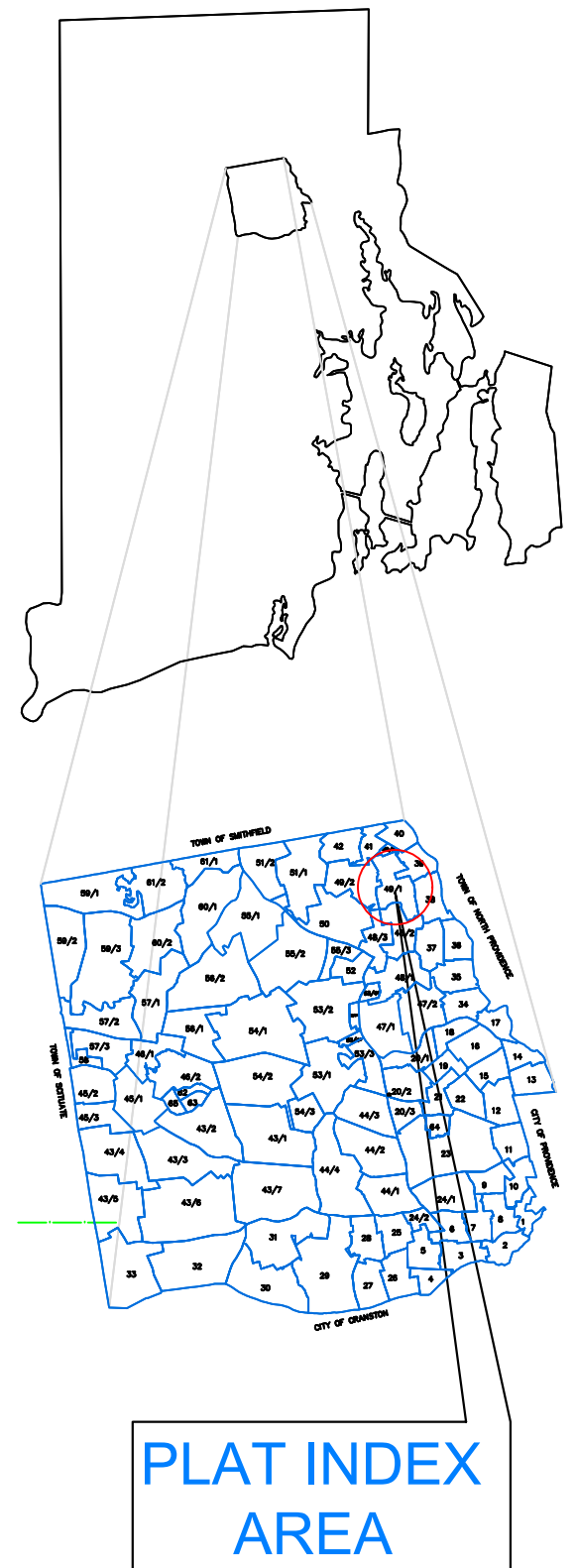
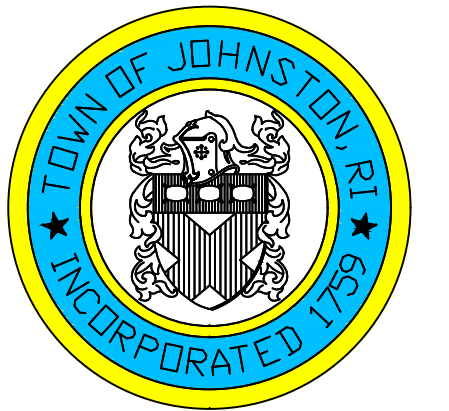
SHOWING ZONING DISTRICTS

Assessor's Plat Number

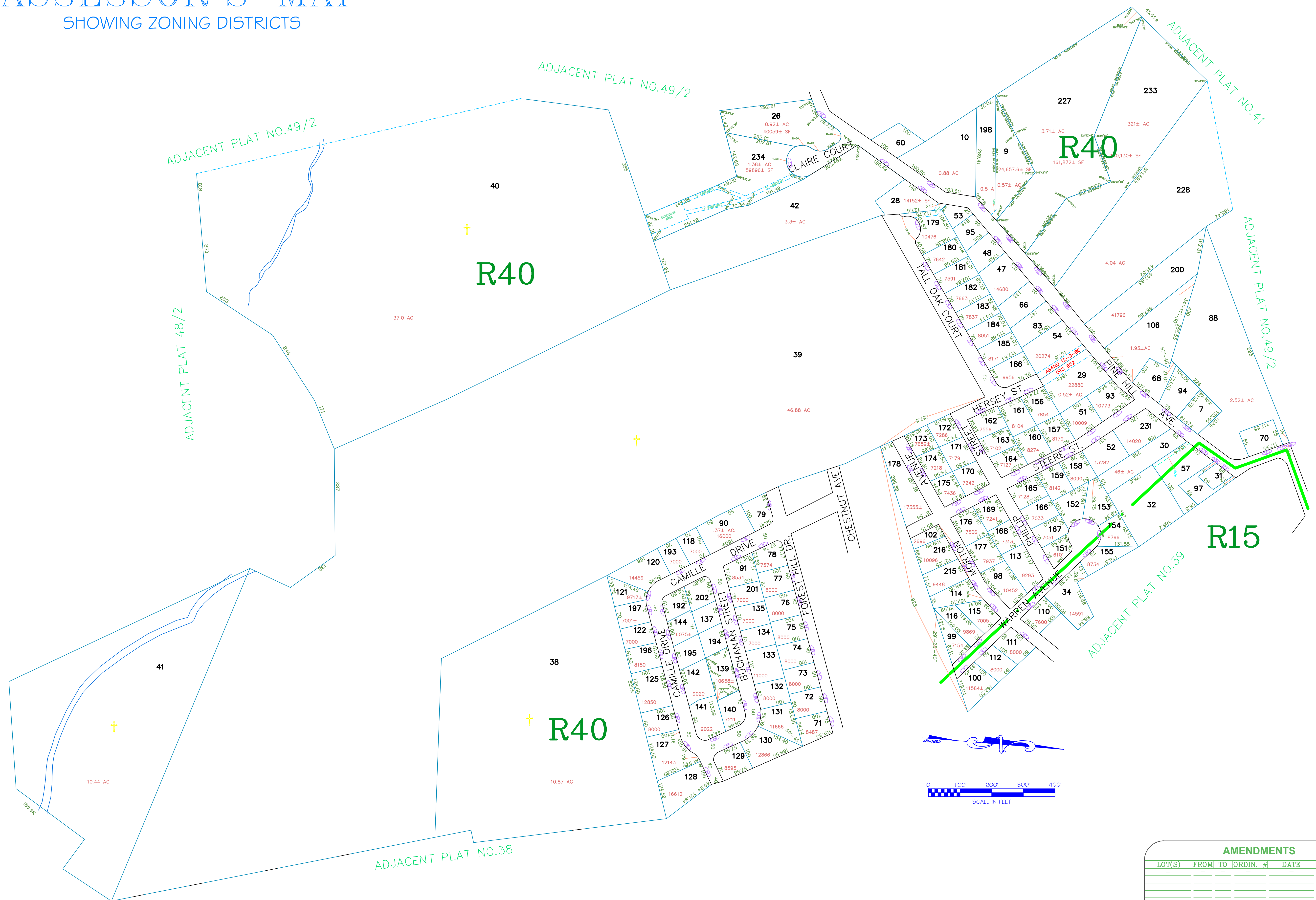
49/1

STATE OF RHODE ISLAND
TOWN OF JOHNSTON
PROVIDENCE COUNTY
INCORPORATED 1759

ASSESSOR'S OFFICE
1385 HARTFORD AVENUE
JOHNSTON, RHODE ISLAND
02919



PLAT INDEX AREA



AMENDMENTS				
LOT(S)	FROM TO	ORDIN. #	DATE	NOTE

Scale: 1:150
Revised By: Benjamin Ng
Last updated: January 02, 2022
Date printed: May 17, 2022

For copies of plat maps, please go to the DPW at 100 Irons Avenue Johnston Rhode Island, Thank you.

NOTE: This map was prepared for the use of the Town of Johnston for assessment and illustrative purposes only. It does not represent a survey of the premises. No liability is assumed as to the sufficiency or accuracy of the data delineated hereon.