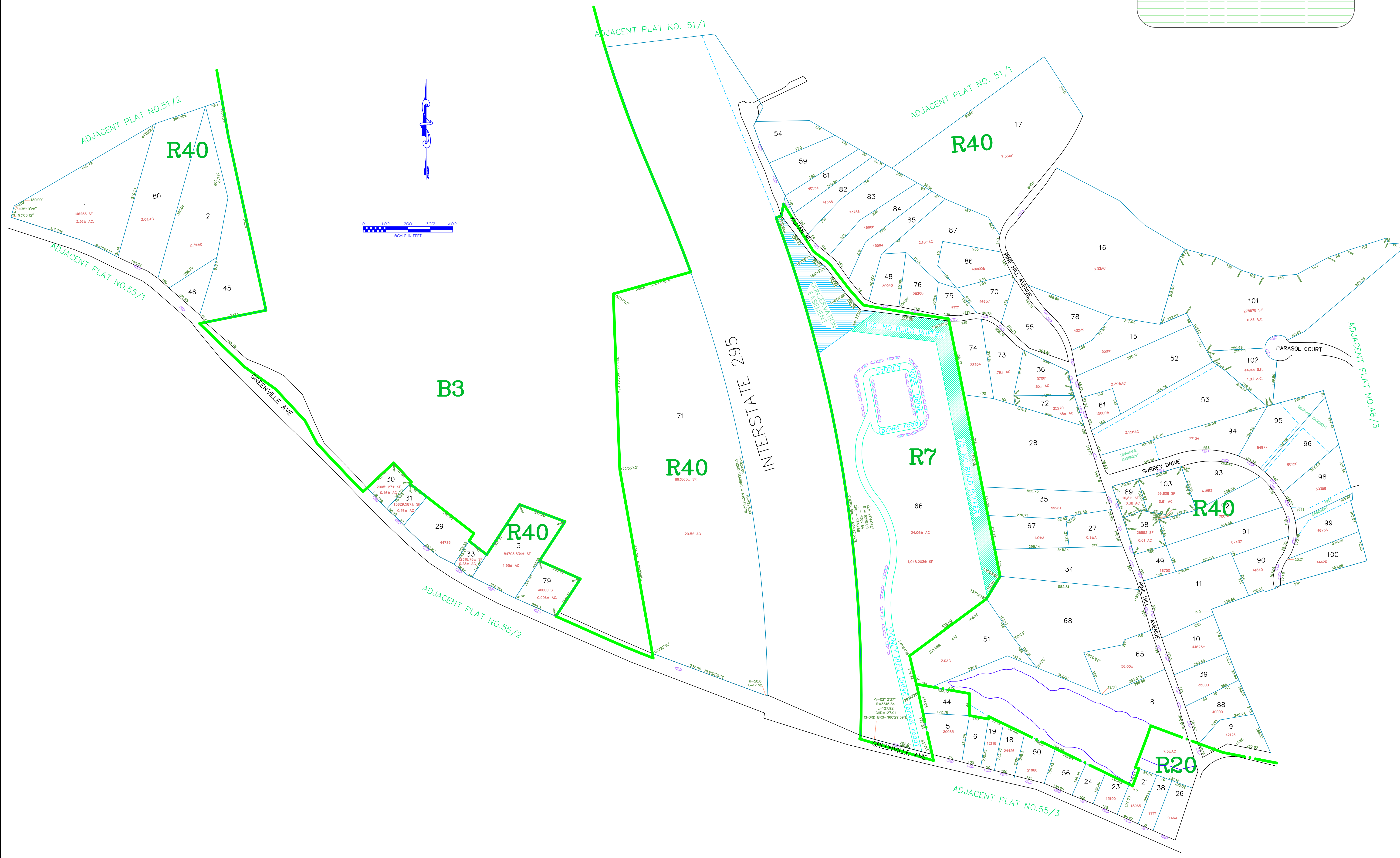


ASSESSOR'S MAP

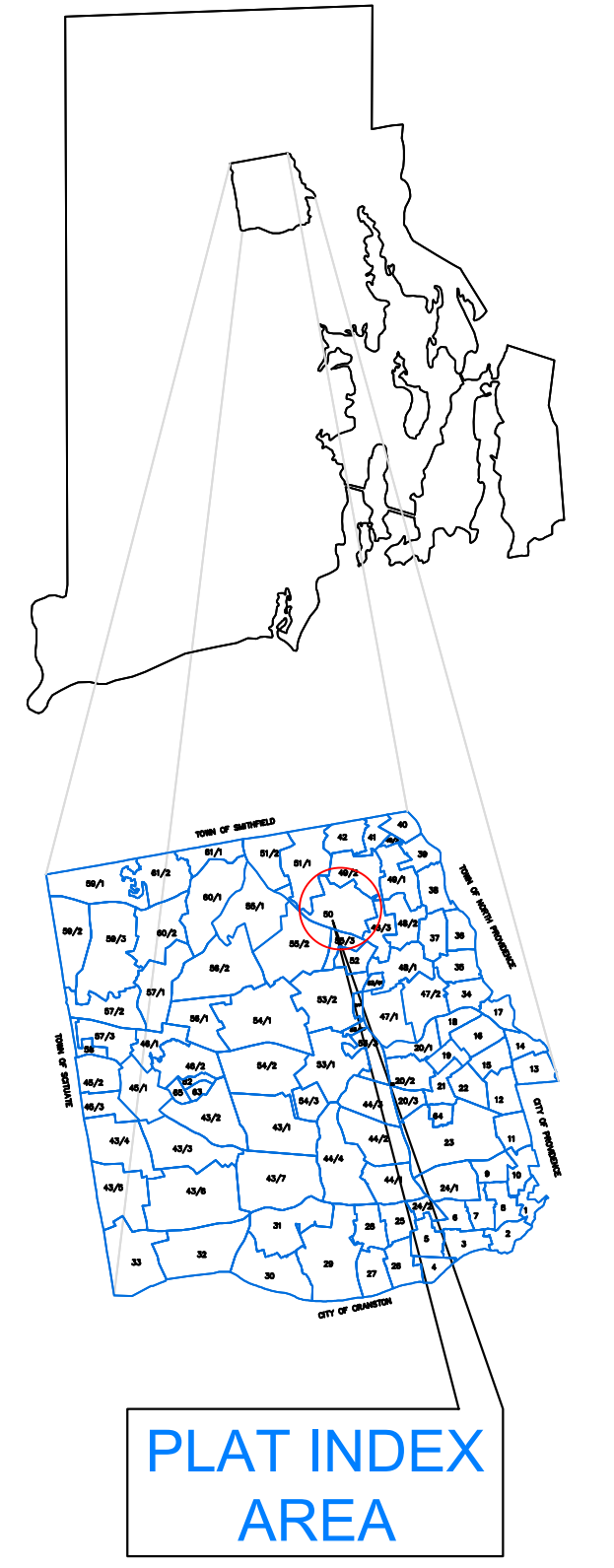
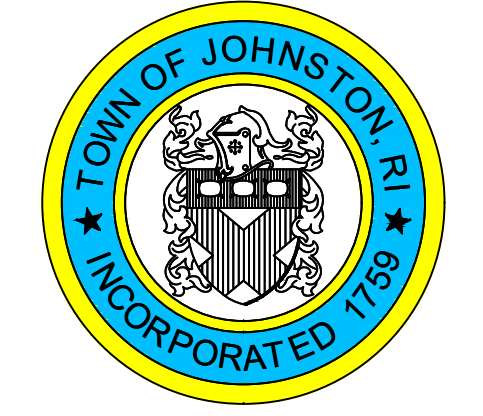
SHOWING ZONING DISTRICTS

AMENDMENTS					
LOT(S)	FROM	TO	ORDIN. #	DATE	NOTE
66	R40	CS	2008-12	7/22/08	
71	R40	B3	2016-6	5/09/16	PORTION
66	CS	R7	2017-15	9/15/2017	



Assessor's Plat Number
50

STATE OF RHODE ISLAND
TOWN OF JOHNSTON
PROVIDENCE COUNTY
INCORPORATED 1759
ASSESSOR'S OFFICE
1385 HARTFORD AVENUE
JOHNSTON, RHODE ISLAND
02919



Scale: 1:200
Revised By: Benjamin Ng
Last updated: January 02, 2022
Date printed: May 19, 2022

For copies of plat maps, please go to the DPW at 100 Irons Avenue Johnston Rhode Island, Thank you.

NOTE: This map was prepared for the use of the Town of Johnston for assessment and illustrative purposes only. It does not represent a survey of the premises. No liability is assumed as to the sufficiency or accuracy of the data delineated hereon.