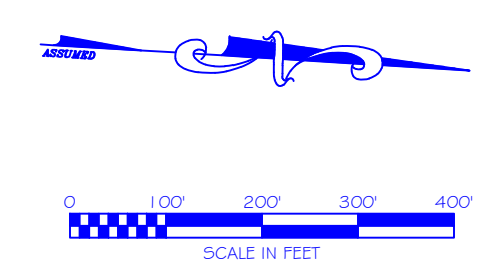
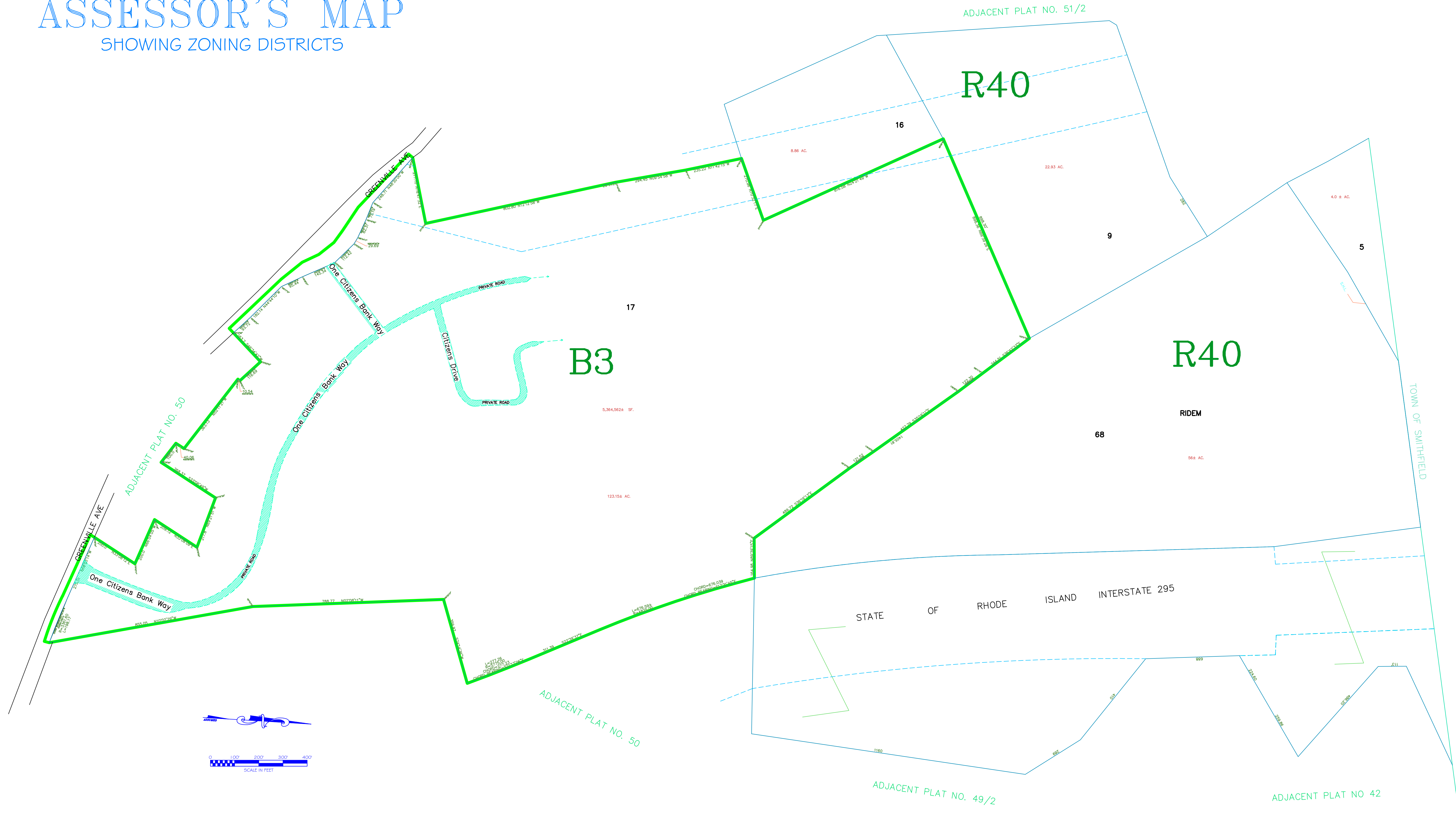


# ASSESSOR'S MAP

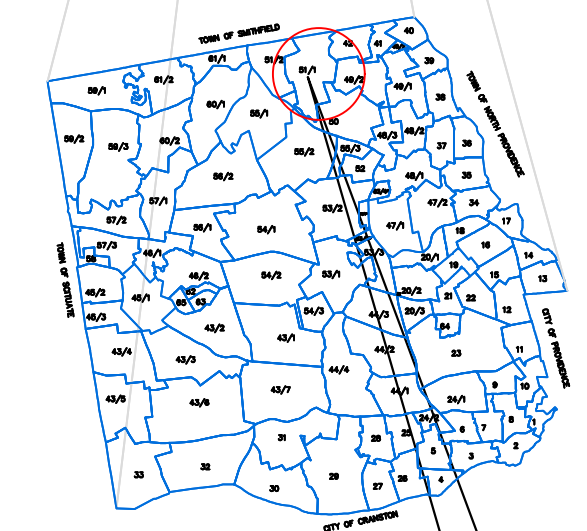
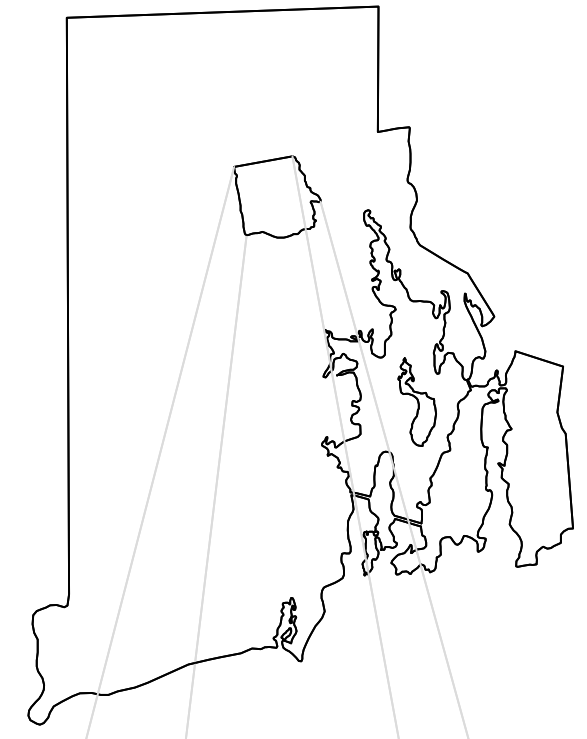
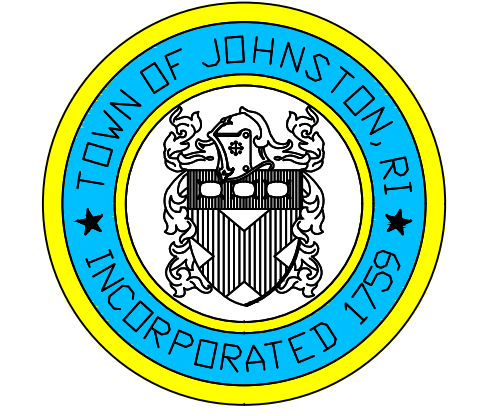
SHOWING ZONING DISTRICTS



AMENDMENTS					
LOT(S)	FROM	TO	ORDIN. #	DATE	NOTE
17	R40	B3	2016-7	05/09/2016	-

Assessor's Plat Number  
**51/1**

STATE OF RHODE ISLAND  
**TOWN OF JOHNSTON**  
PROVIDENCE COUNTY  
INCORPORATED 1759  
ASSESSOR'S OFFICE  
1385 HARTFORD AVENUE  
JOHNSTON, RHODE ISLAND  
02919



**PLAT INDEX AREA**

Scale: 1:200  
Revised By: Benjamin Ng  
Last updated: January 02, 2022  
Date printed: May 19, 2022

For copies of plat maps, please go to the DPW at 100 Irons Avenue Johnston Rhode Island, Thank you.

NOTE: This map was prepared for the use of the Town of Johnston for assessment and illustrative purposes only. It does not represent a survey of the premises. No liability is assumed as to the sufficiency or accuracy of the data delineated hereon.