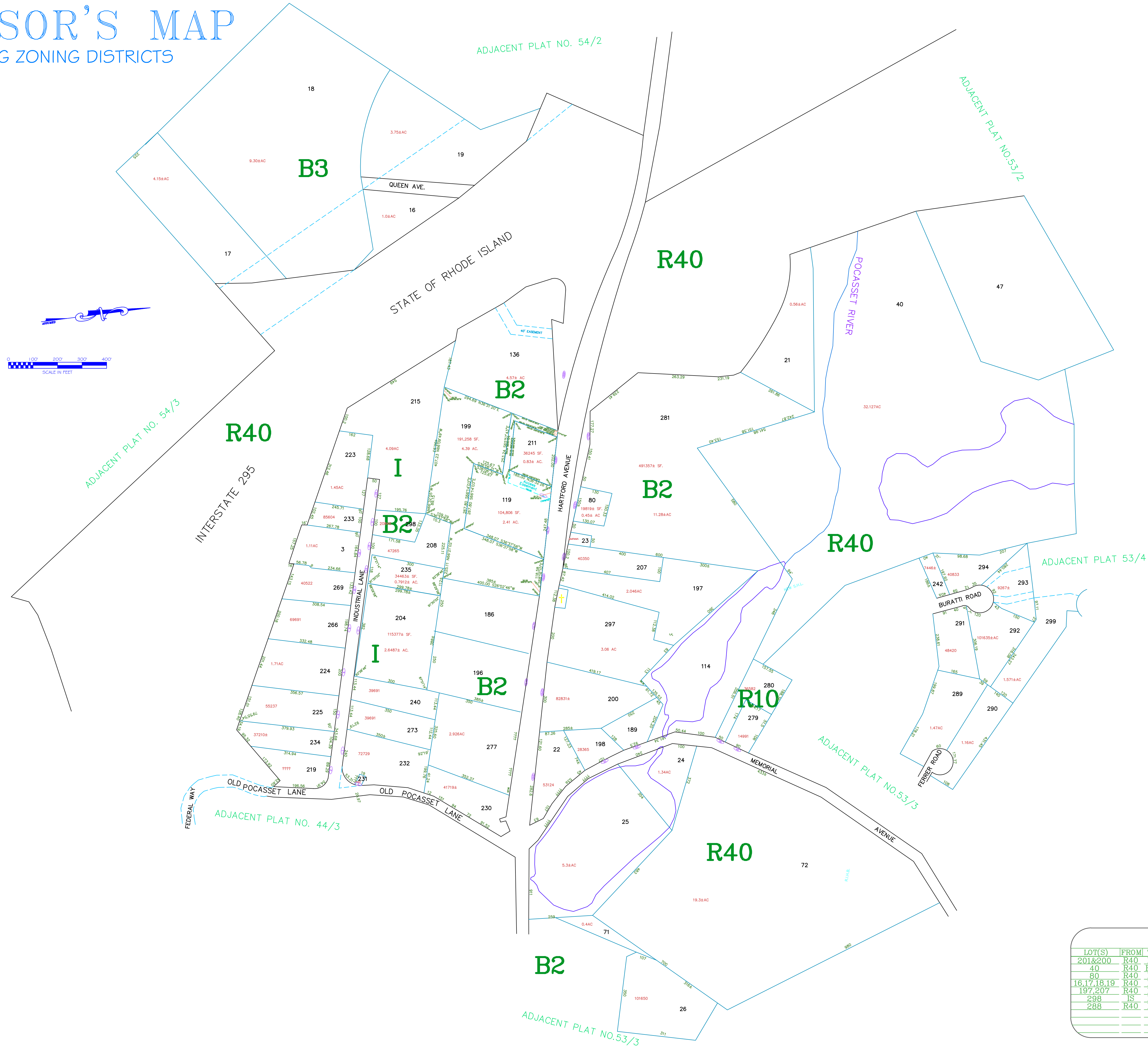
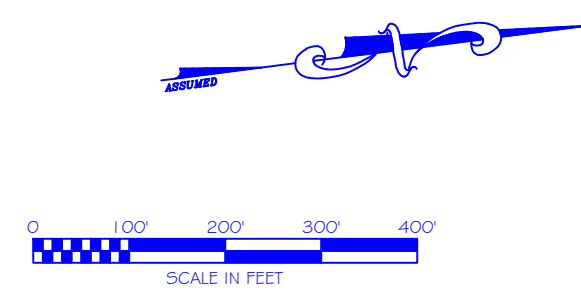


# ASSESSOR'S MAP

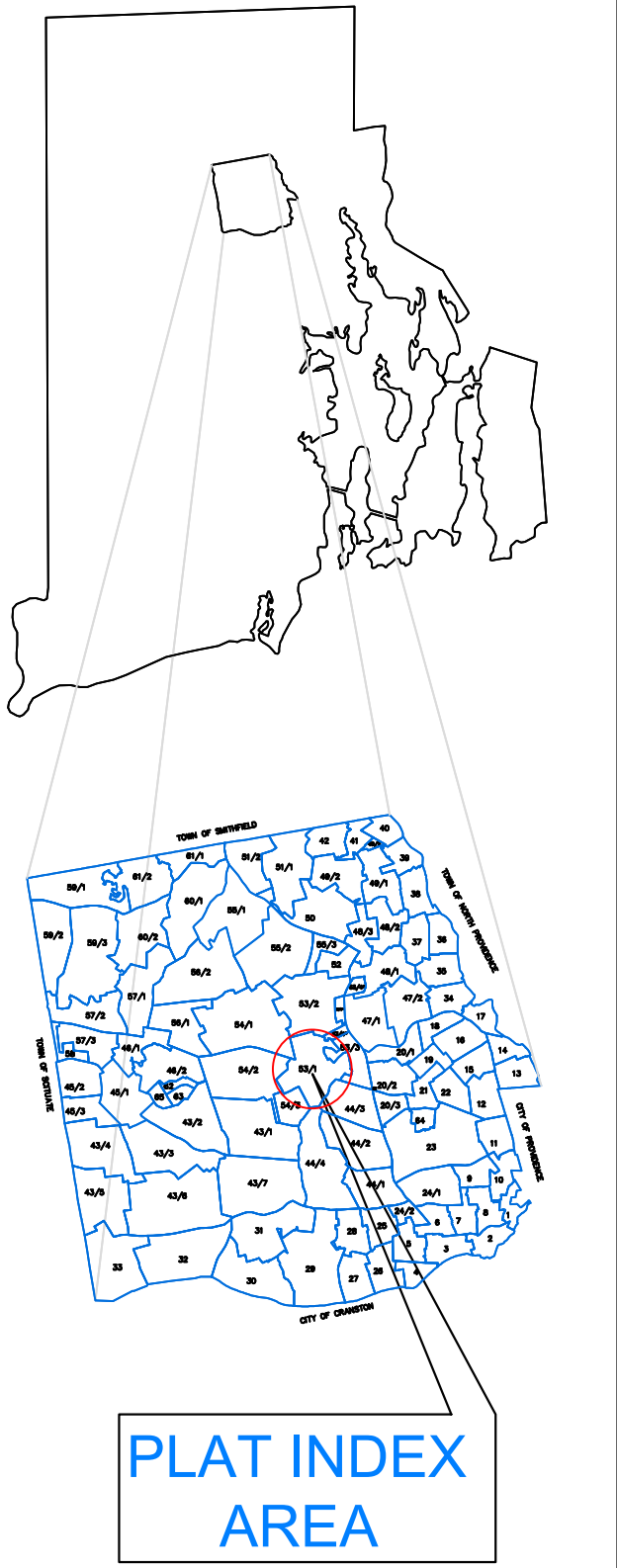
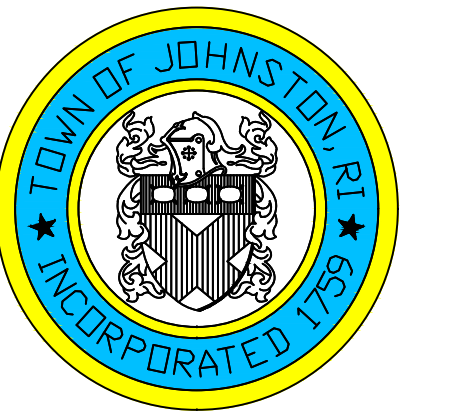
SHOWING ZONING DISTRICTS



AMENDMENTS					
LOT(S)	FROM	TO	ORDIN. #	DATE	NOTE
201&200	R40	B2	479	10/13/81	-
40	R40	R10	732	6/13/88	WITH STIP.
80	R40	B2	769	7/17/89	-
16,17,18,19	R40	B3	939	7/14/97	-
197,207	R40	B2	1009	7/14/97	-
298	IS	B2	1058	1/11/99	-
288	R40	B2	1084	10/12/99	-

Assessor's Plat Number  
**53/1**

STATE OF RHODE ISLAND  
**TOWN OF JOHNSTON**  
PROVIDENCE COUNTY  
INCORPORATED 1759  
ASSESSOR'S OFFICE  
1385 HARTFORD AVENUE  
JOHNSTON, RHODE ISLAND  
02919



Scale: 1:200  
Revised By: Benjamin Ng  
Last updated: January 02, 2022  
Date printed: May 12, 2022

For copies of plat maps, please go to the DPW at 100 Irons Avenue Johnston Rhode Island, Thank you.  
NOTE: This map was prepared for the use of the Town of Johnston for assessment and illustrative purposes only. It does not represent a survey of the premises. No liability is assumed as to the sufficiency or accuracy of the data delineated hereon.