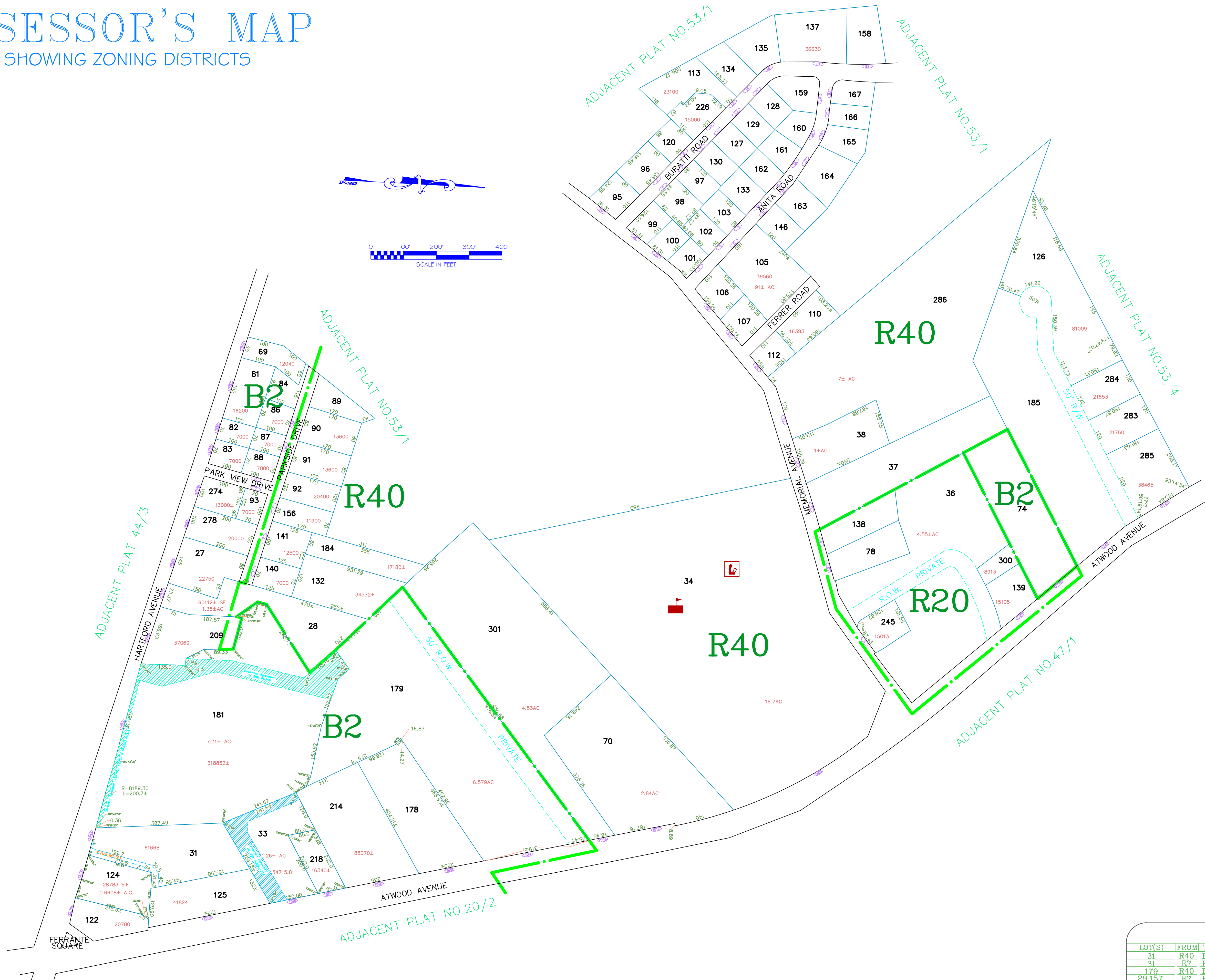
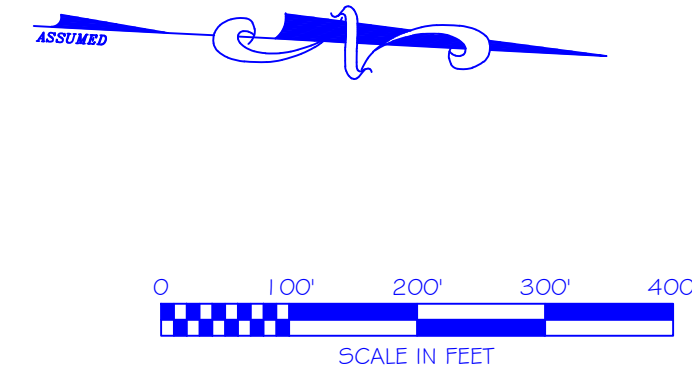


ASSESSOR'S MAP

SHOWING ZONING DISTRICTS

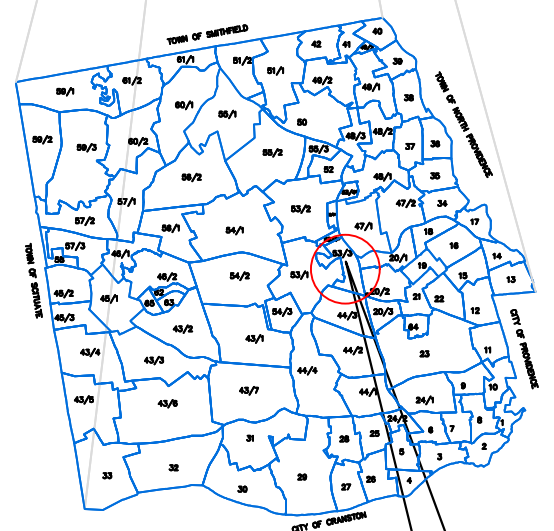
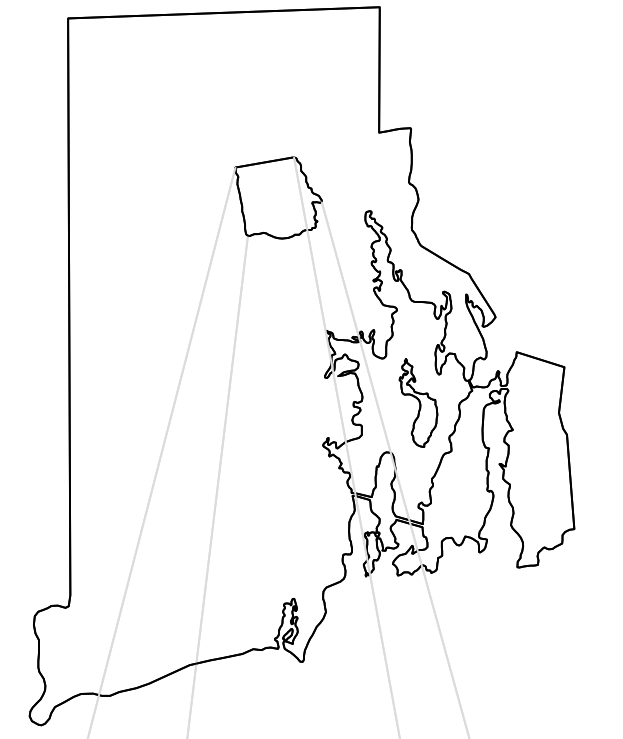
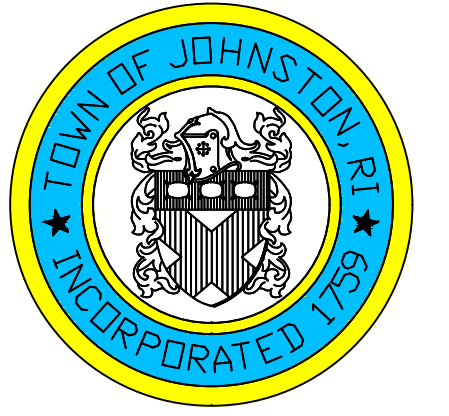


AMENDMENTS					
LOT(S)	FROM	TO	ORDIN. #	DATE	NOTE
31	R40	B2	462	4/13/81	--
31	R7	B2	553	11/13/84	--
179	R40	B2	807	3/12/90	--
29,157	R7	B2	874	9/14/92	--
180,181	R7	B2	874	9/14/92	--
30,33,143	R40	B2	940	4/26/95	--
74	R20	B2	1010	8/12/97	--

Assessor's Plat Number

53/3

STATE OF RHODE ISLAND
TOWN OF JOHNSTON
 PROVIDENCE COUNTY
 INCORPORATED 1759
 ASSESSOR'S OFFICE
 1385 HARTFORD AVENUE
 JOHNSTON, RHODE ISLAND
 02919



PLAT INDEX AREA

Scale: 1:150
 Revised By: Benjamin Ng
 Last updated: January 02, 2022
 Date printed: May 12, 2022

For copies of plat maps, please go to the DPW at 100 Irons Avenue Johnston Rhode Island, Thank you.

NOTE: This map was prepared for the use of the Town of Johnston for assessment and illustrative purposes only. It does not represent a survey of the premises. No liability is assumed as to the sufficiency or accuracy of the data delineated hereon.