

# ASSESSOR'S MAP

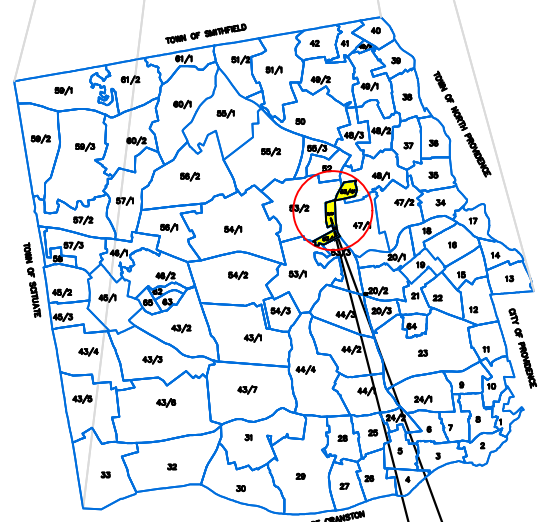
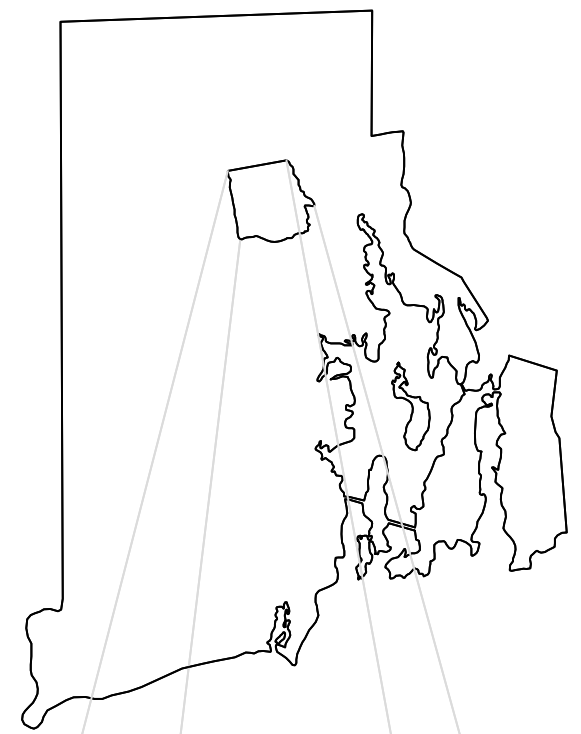
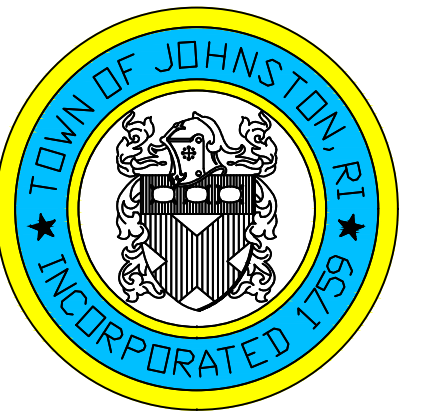
SHOWING ZONING DISTRICTS

Assessor's Plat Number

# 53/4

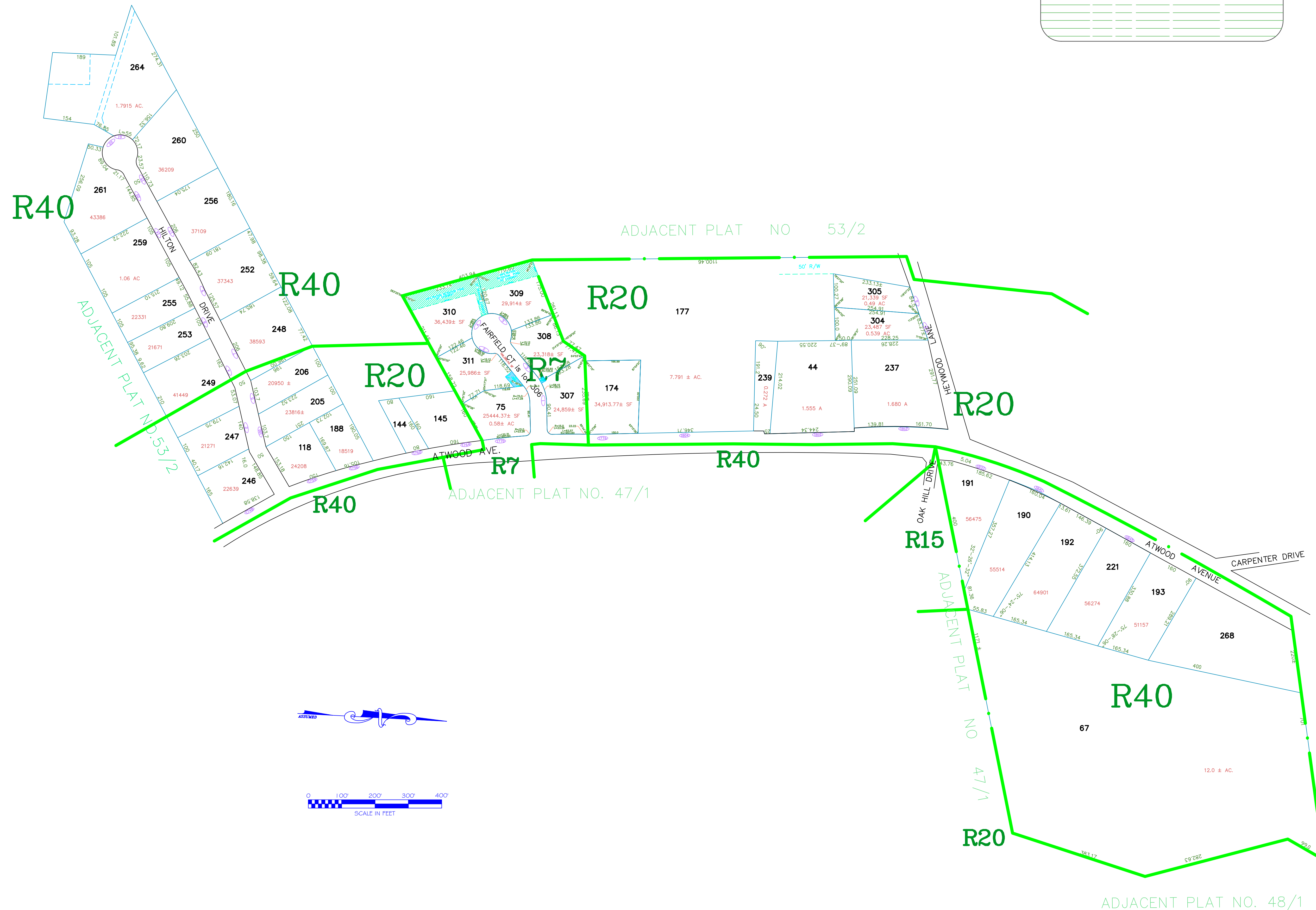
STATE OF RHODE ISLAND  
TOWN OF JOHNSTON  
PROVIDENCE COUNTY  
INCORPORATED 1759

ASSESSOR'S OFFICE  
1385 HARTFORD AVENUE  
JOHNSTON, RHODE ISLAND  
02919



PLAT INDEX AREA

AMENDMENTS					
LOT(S)	FROM	TO	ORDIN. #	DATE	NOTE
75	R20	R7	2008-1712	08/08	With Stipulations
75	R7	R7	2008-2512	08/08	With Stipulations



Scale: 1:150  
Revised By: Benjamin Ng  
Last updated: January 02, 2022  
Date printed: May 12, 2022

For copies of plat maps, please go to the DPW at 100 Irons Avenue Johnston Rhode Island, Thank you.

NOTE: This map was prepared for the use of the Town of Johnston for assessment and illustrative purposes only. It does not represent a survey of the premises. No liability is assumed as to the sufficiency or accuracy of the data delineated hereon.