

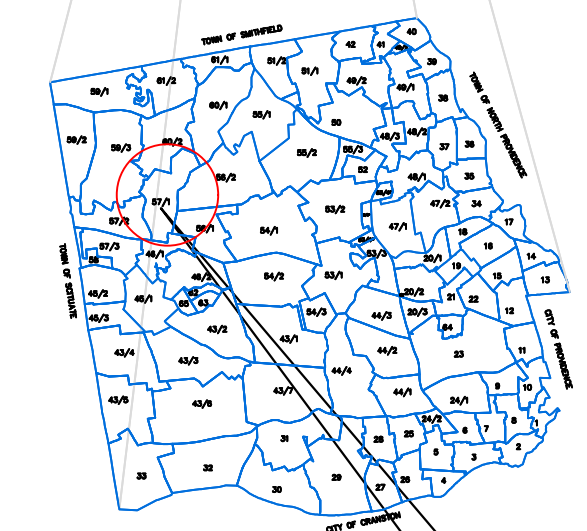
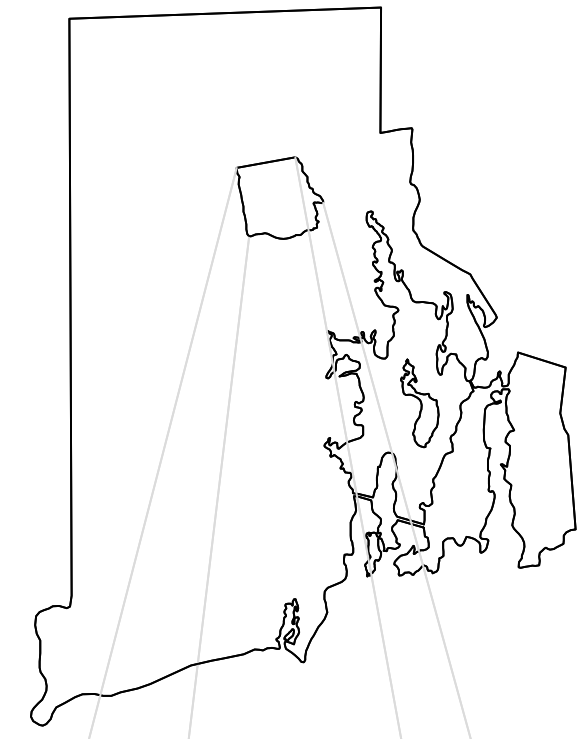
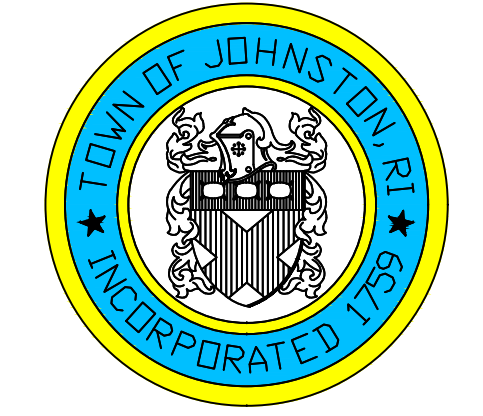
ASSESSOR'S MAP

SHOWING ZONING DISTRICTS

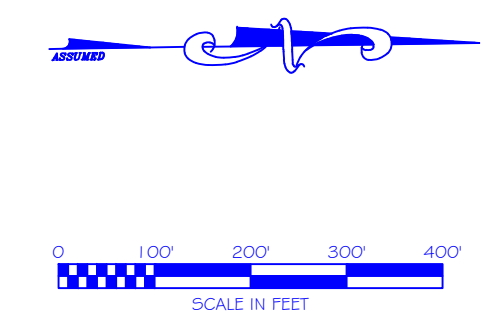
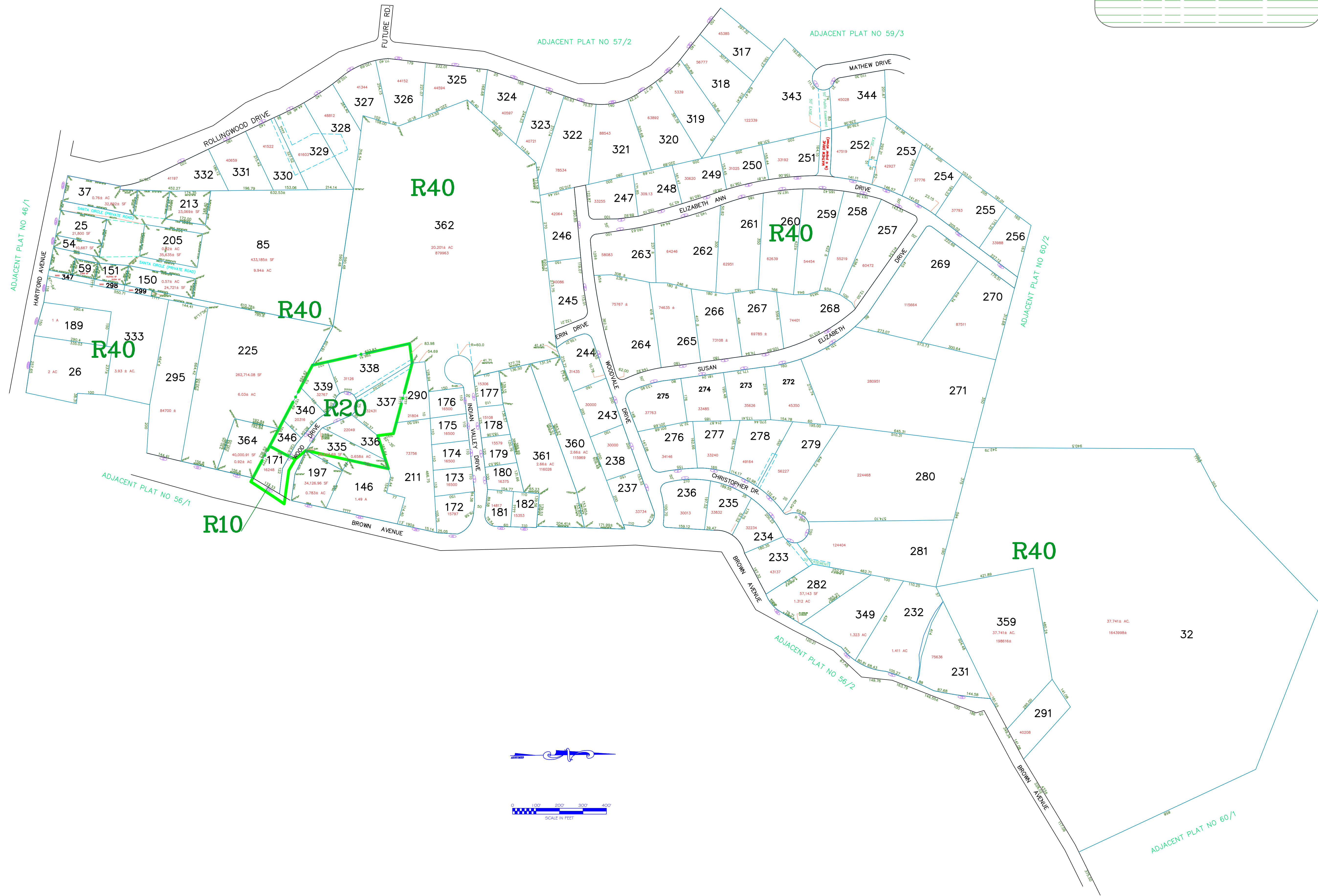
AMENDMENTS					
LOT(S)	FROM	TO	ORDIN. #	DATE	NOTE
27, 221	R40	R20	784	7/10/89	-
171	R40	R10	863	5/11/92	-

Assessor's Plat Number
57/1

STATE OF RHODE ISLAND
TOWN OF JOHNSTON
PROVIDENCE COUNTY
INCORPORATED 1759
ASSESSOR'S OFFICE
1385 HARTFORD AVENUE
JOHNSTON, RHODE ISLAND
02919



PLAT INDEX AREA



Scale: 1:200
Revised By: Benjamin Ng
Last updated: January 02, 2022
Date printed: May 20, 2022

For copies of plat maps, please go to the DPW at 100 Irons Avenue Johnston Rhode Island, Thank you.

NOTE: This map was prepared for the use of the Town of Johnston for assessment and illustrative purposes only. It does not represent a survey of the premises. No liability is assumed as to the sufficiency or accuracy of the data delineated hereon.