

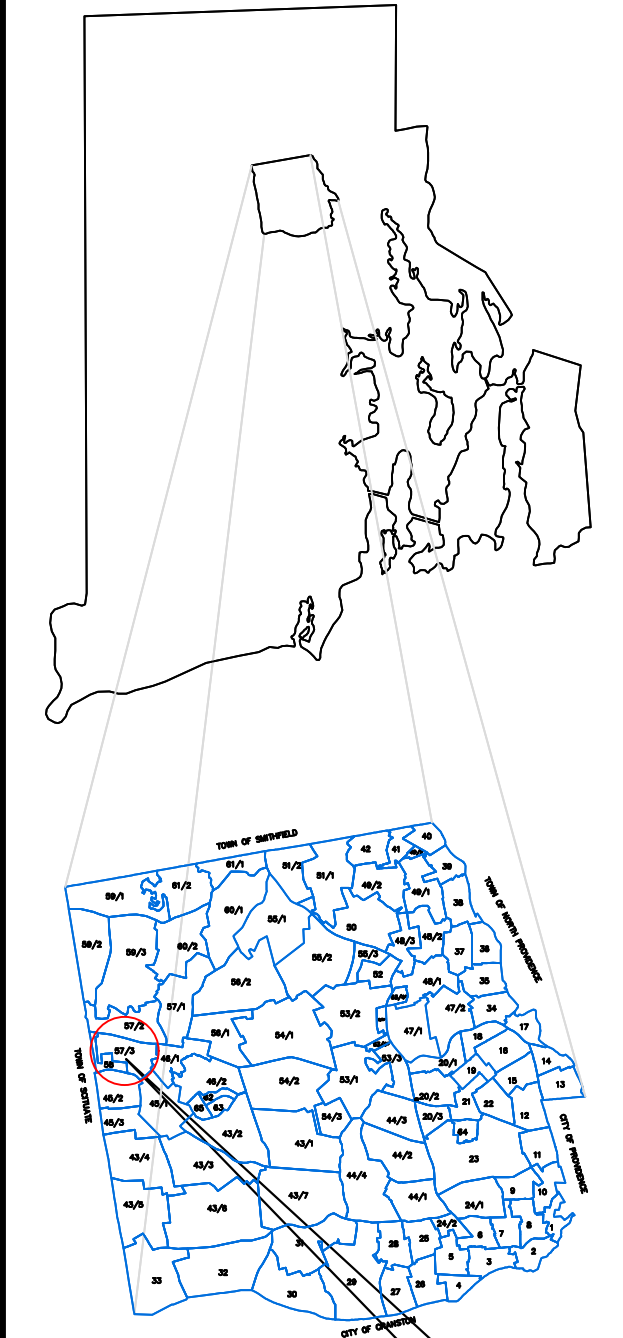
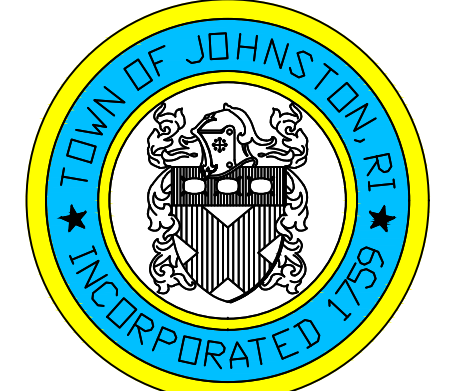
# ASSESSOR'S MAP

SHOWING ZONING DISTRICTS

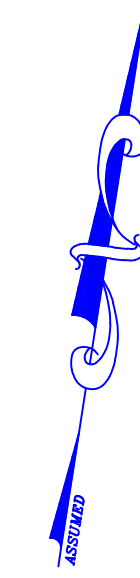
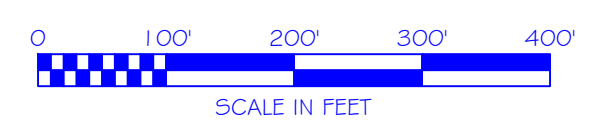
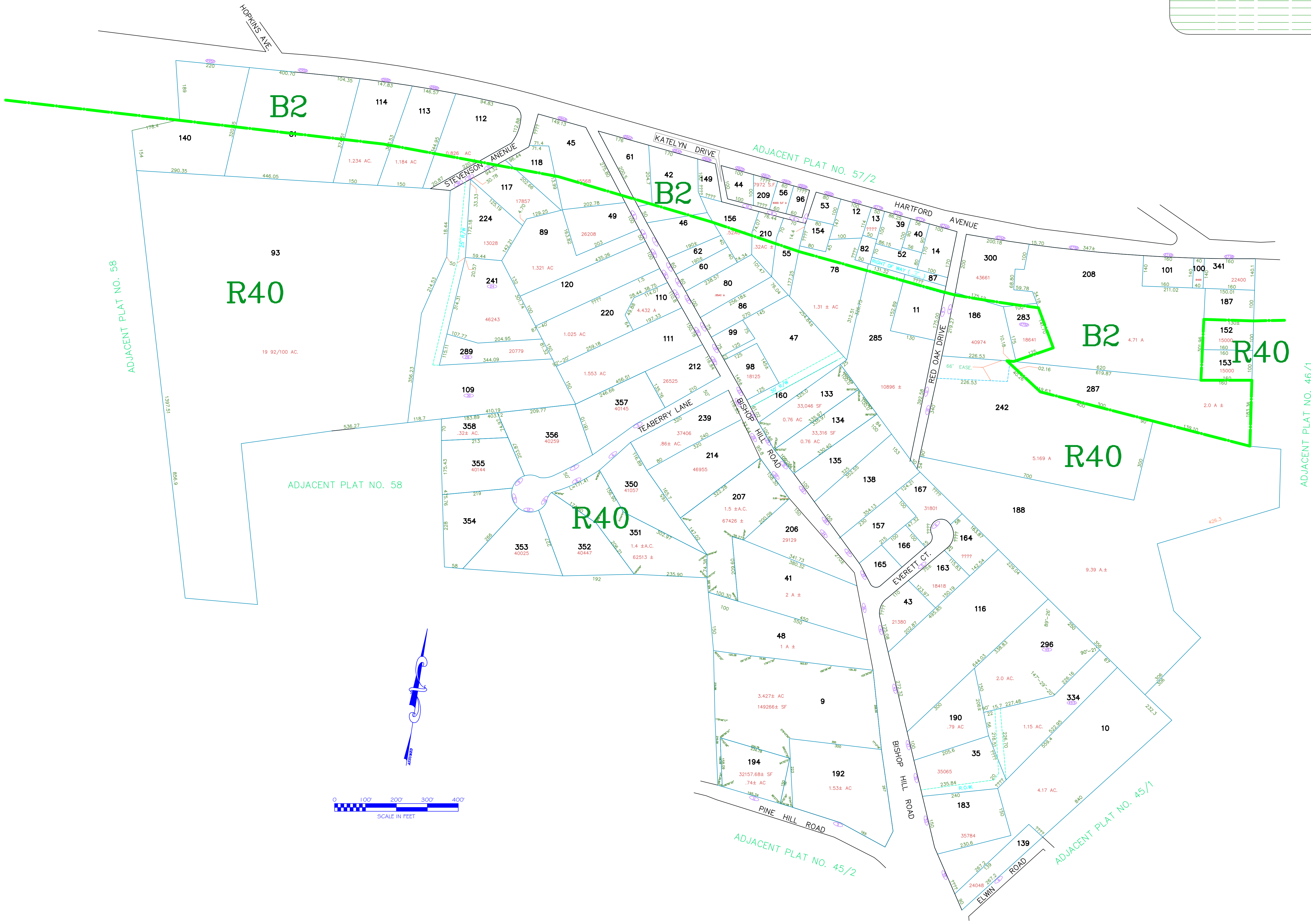
AMENDMENTS					
LOT(S)	FROM	TO	ORDIN. #	DATE	NOTE
208, 287	R40	B2	2013-9	07/08/2013	-

Assessor's Plat Number  
**57/3**

STATE OF RHODE ISLAND  
**TOWN OF JOHNSTON**  
PROVIDENCE COUNTY  
INCORPORATED 1759  
ASSESSOR'S OFFICE  
1385 HARTFORD AVENUE  
JOHNSTON, RHODE ISLAND  
02919



PLAT INDEX AREA



Scale: 1:150  
Revised By: Benjamin Ng  
Last updated: January 02, 2022  
Date printed: May 12, 2022

For copies of plat maps, please go to the DPW at 100 Irons Avenue Johnston Rhode Island. Thank you.

NOTE: This map was prepared for the use of the Town of Johnston for assessment and illustrative purposes only. It does not represent a survey of the premises. No liability is assumed as to the sufficiency or accuracy of the data delineated hereon.