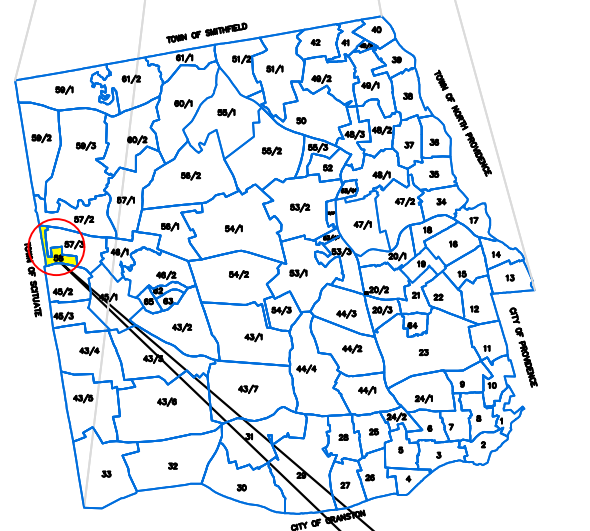
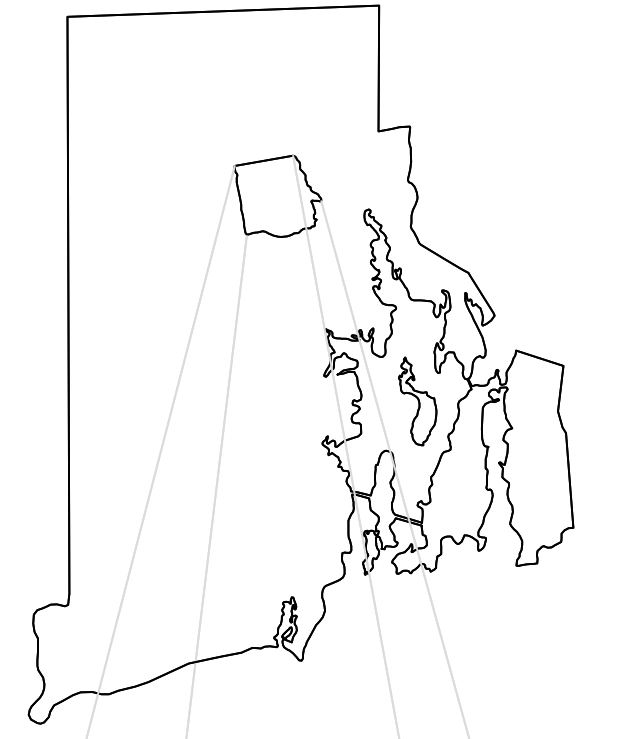
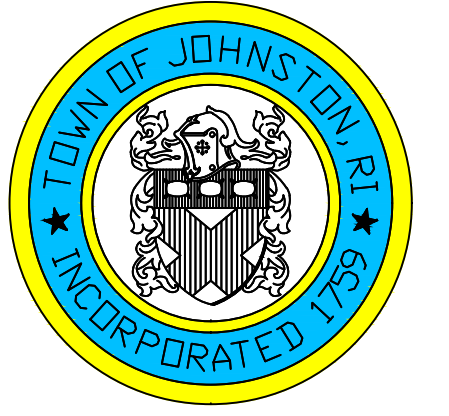


ASSESSOR'S MAP

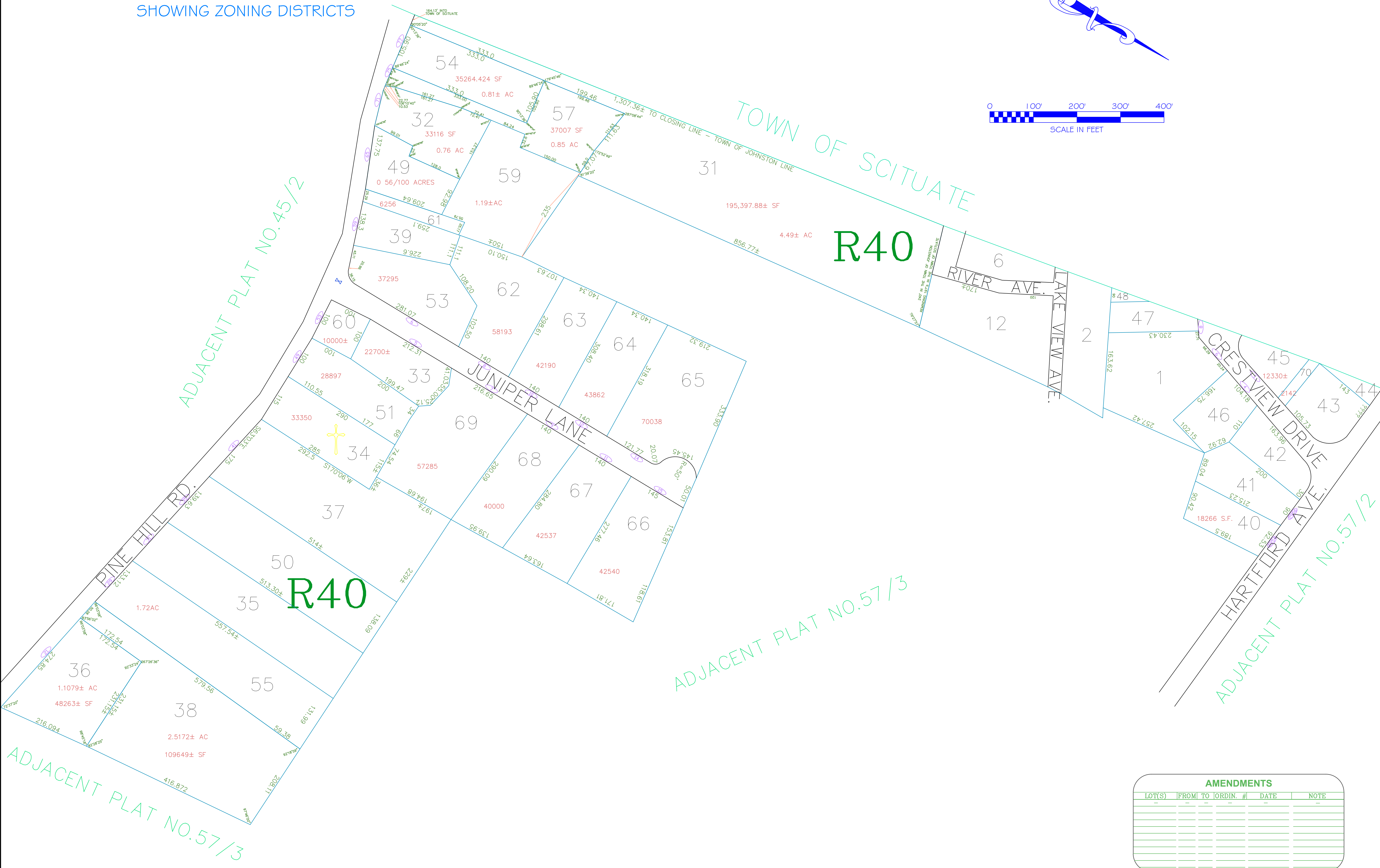
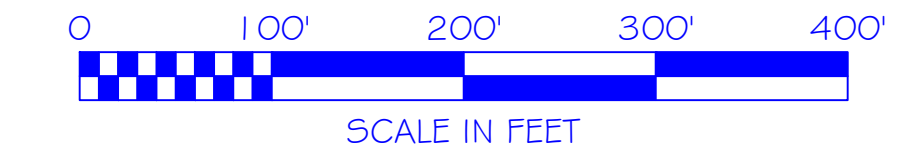
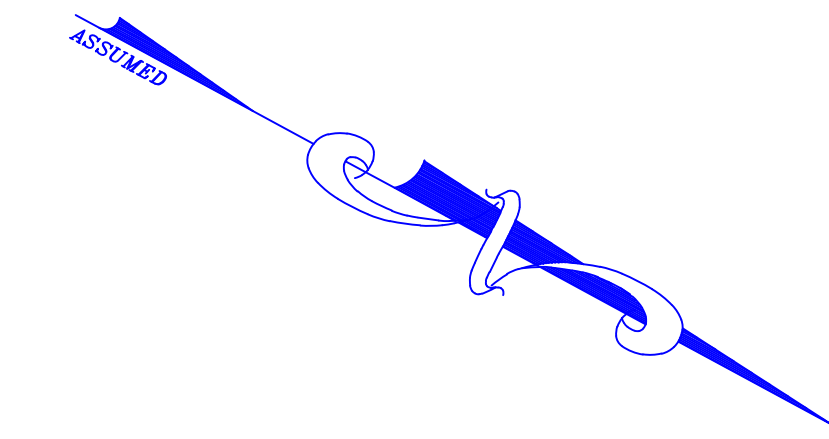
SHOWING ZONING DISTRICTS

Assessor's Plat Number
58

STATE OF RHODE ISLAND
TOWN OF JOHNSTON
PROVIDENCE COUNTY
INCORPORATED 1759
ASSESSOR'S OFFICE
1385 HARTFORD AVENUE
JOHNSTON, RHODE ISLAND
02919



PLAT INDEX AREA



AMENDMENTS					
LOT(S)	FROM	TO	ORDIN. #	DATE	NOTE

Scale: 1:100
Revised By: Benjamin Ng
Last updated: January 02, 2022
Date printed: May 12, 2022

For copies of plat maps, please go to the DPW at 100 Irons Avenue Johnston Rhode Island, Thank you.

NOTE: This map was prepared for the use of the Town of Johnston for assessment and illustrative purposes only. It does not represent a survey of the premises. No liability is assumed as to the sufficiency or accuracy of the data delineated hereon.