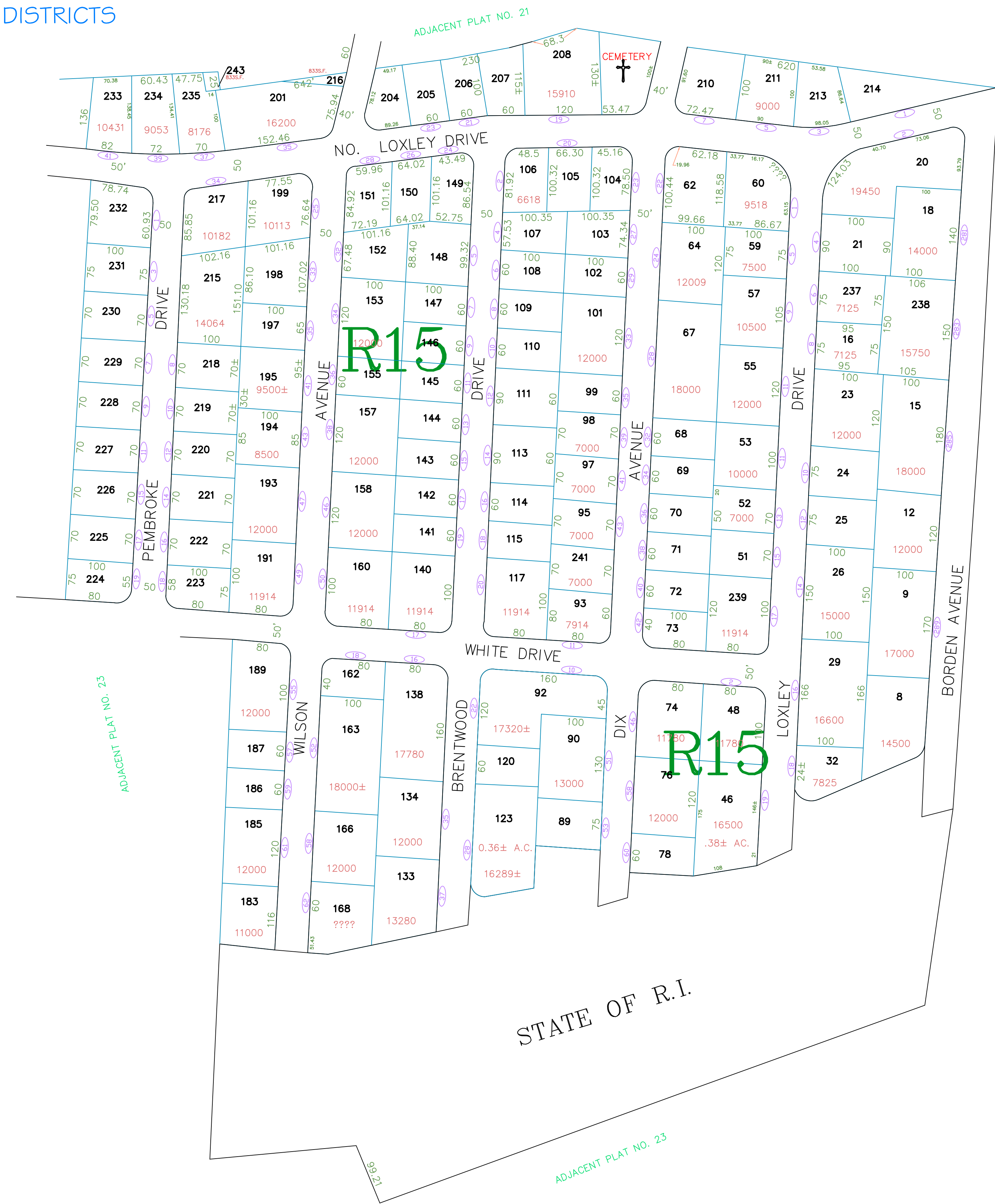


# ASSESSOR'S MAP

SHOWING ZONING DISTRICTS

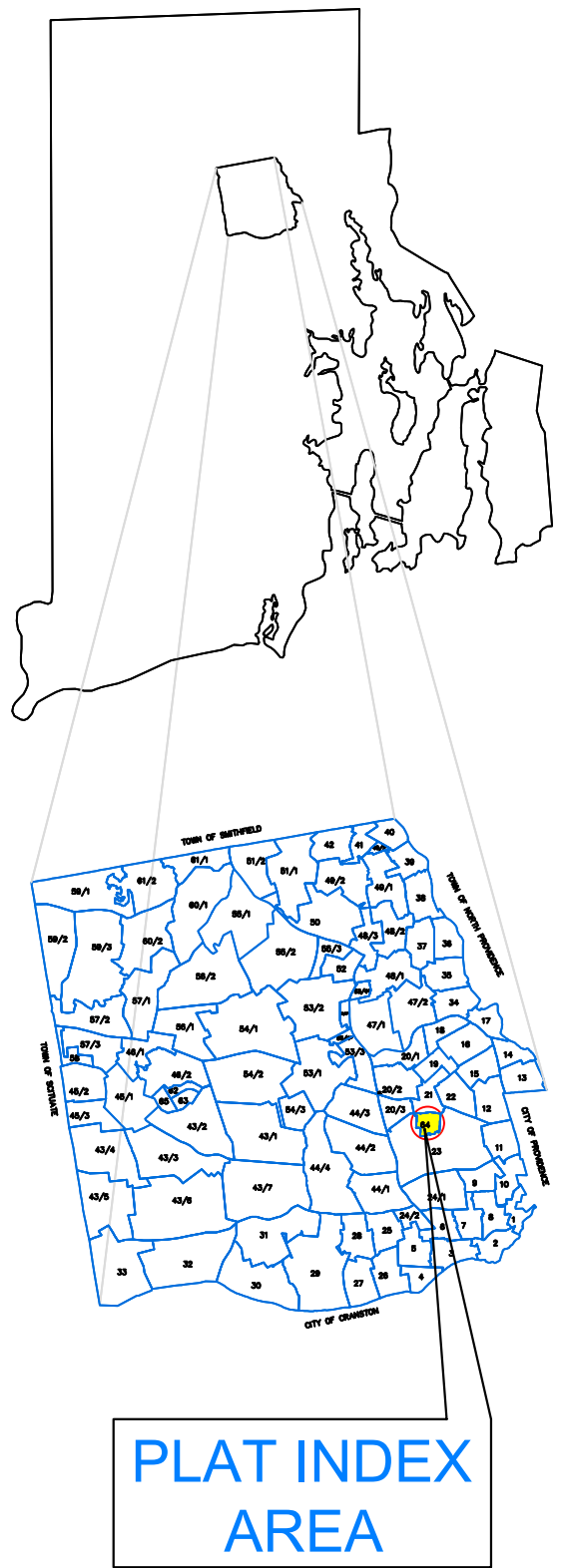
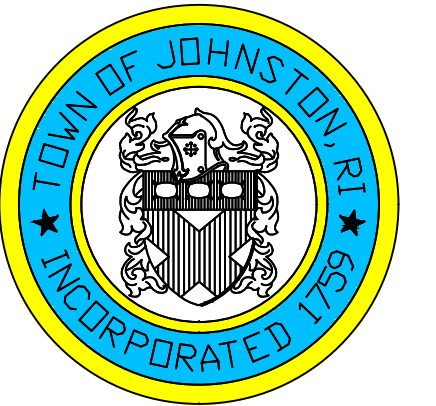


AMENDMENTS					
LOT(S)	FROM	TO	ORDIN. #	DATE	NOTE

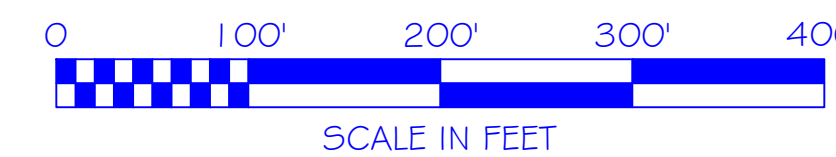
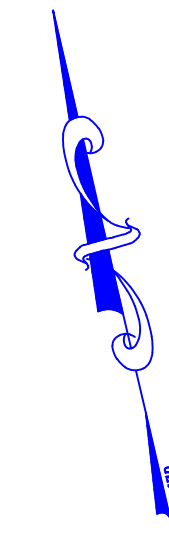
Assessor's Plat Number

# 64

STATE OF RHODE ISLAND  
**TOWN OF JOHNSTON**  
 PROVIDENCE COUNTY  
INCORPORATED 1759  
 ASSESSOR'S OFFICE  
 1385 HARTFORD AVENUE  
 JOHNSTON, RHODE ISLAND  
 02919



ADJACENT PLAT NO. 23



Scale: 1:100

Revised By: Benjamin Ng

Last updated: January 02, 2022

Date printed: May 09, 2022

For copies of plat maps, please go to the DPW at 100 Irons Avenue Johnston Rhode Island, Thank you.

NOTE: This map was prepared for the use of the Town of Johnston for assessment and illustrative purposes only. It does not represent a survey of the premises. No liability is assumed as to the sufficiency or accuracy of the data delineated hereon.