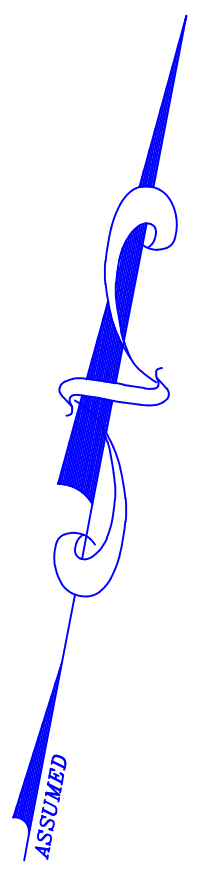
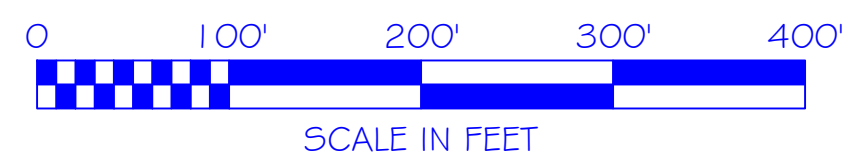
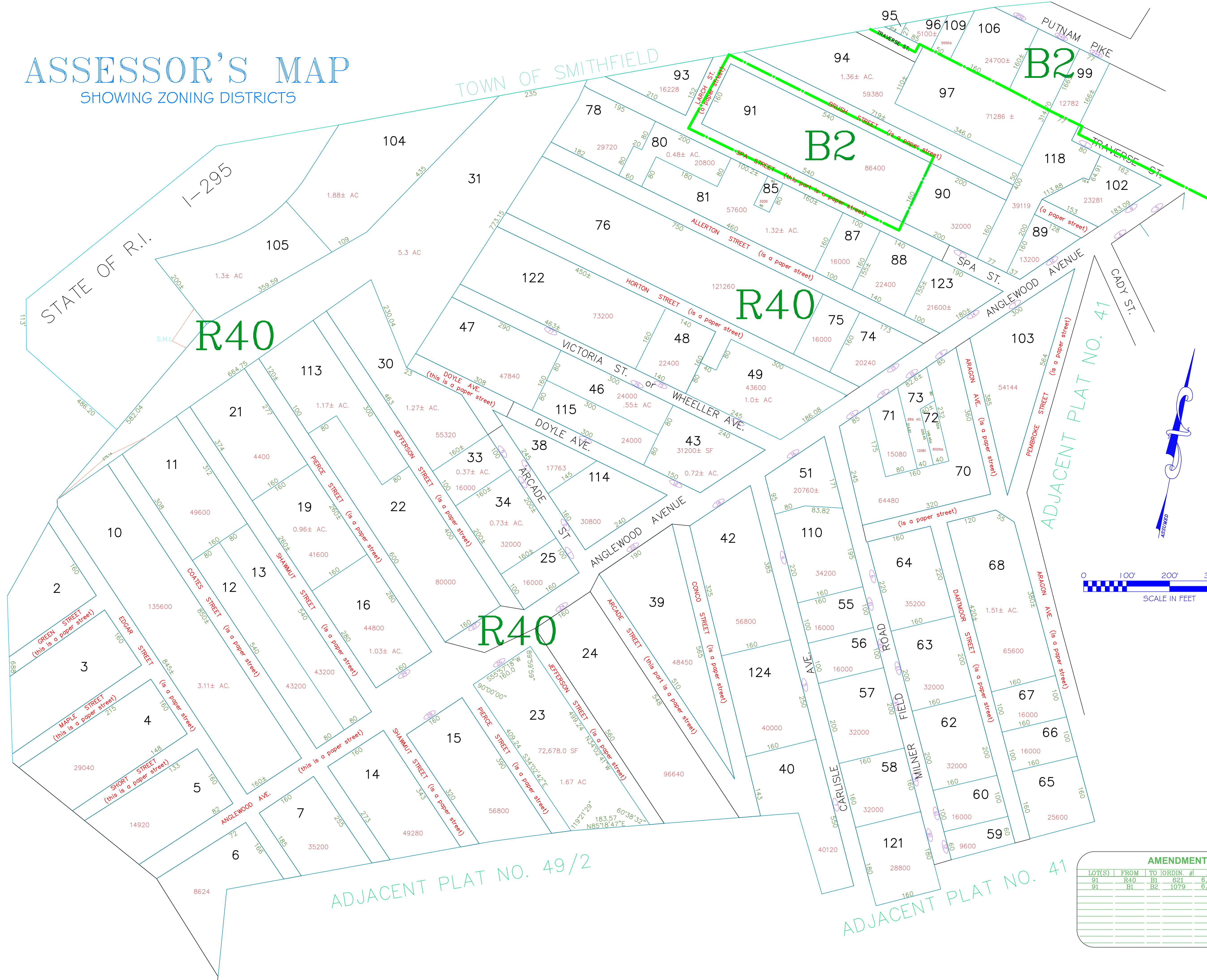


ASSESSOR'S MAP

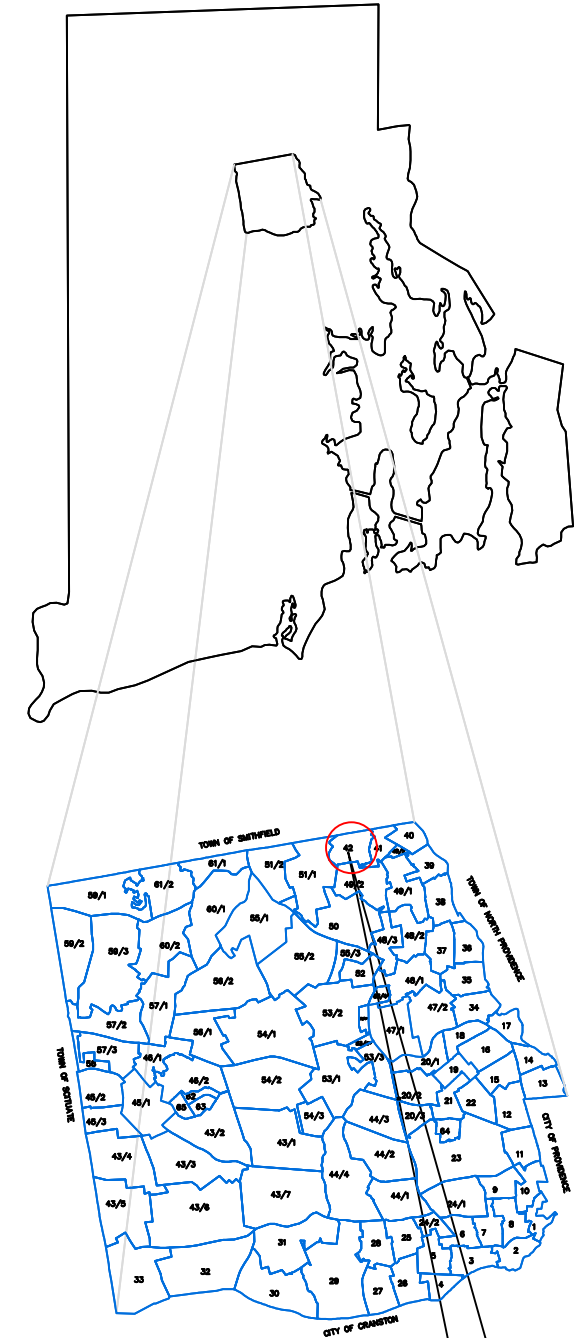
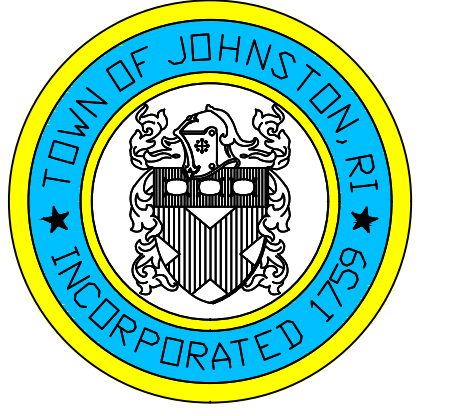
SHOWING ZONING DISTRICTS

ADJACENT PLAT NO. 51/1



Assessor's Plat Number
42

STATE OF RHODE ISLAND
TOWN OF JOHNSTON
PROVIDENCE COUNTY
INCORPORATED 1759
ASSESSOR'S OFFICE
1385 HARTFORD AVENUE
JOHNSTON, RHODE ISLAND
02919



PLAT INDEX AREA

Scale: 1:100
Revised By: Benjamin Ng
Last updated: January 02, 2022
Date printed: May 26, 2022

AMENDMENTS					
LOT(S)	FROM	TO	ORDIN. #	DATE	NOTE
91	R40	B1	621	6/23/86	WITH STIP.
91	B1	B2	1079	6/28/99	-

For copies of plat maps, please go to the DPW at 100 Irons Avenue Johnston Rhode Island, Thank you.

NOTE: This map was prepared for the use of the Town of Johnston for assessment and illustrative purposes only. It does not represent a survey of the premises. No liability is assumed as to the sufficiency or accuracy of the data delineated hereon.