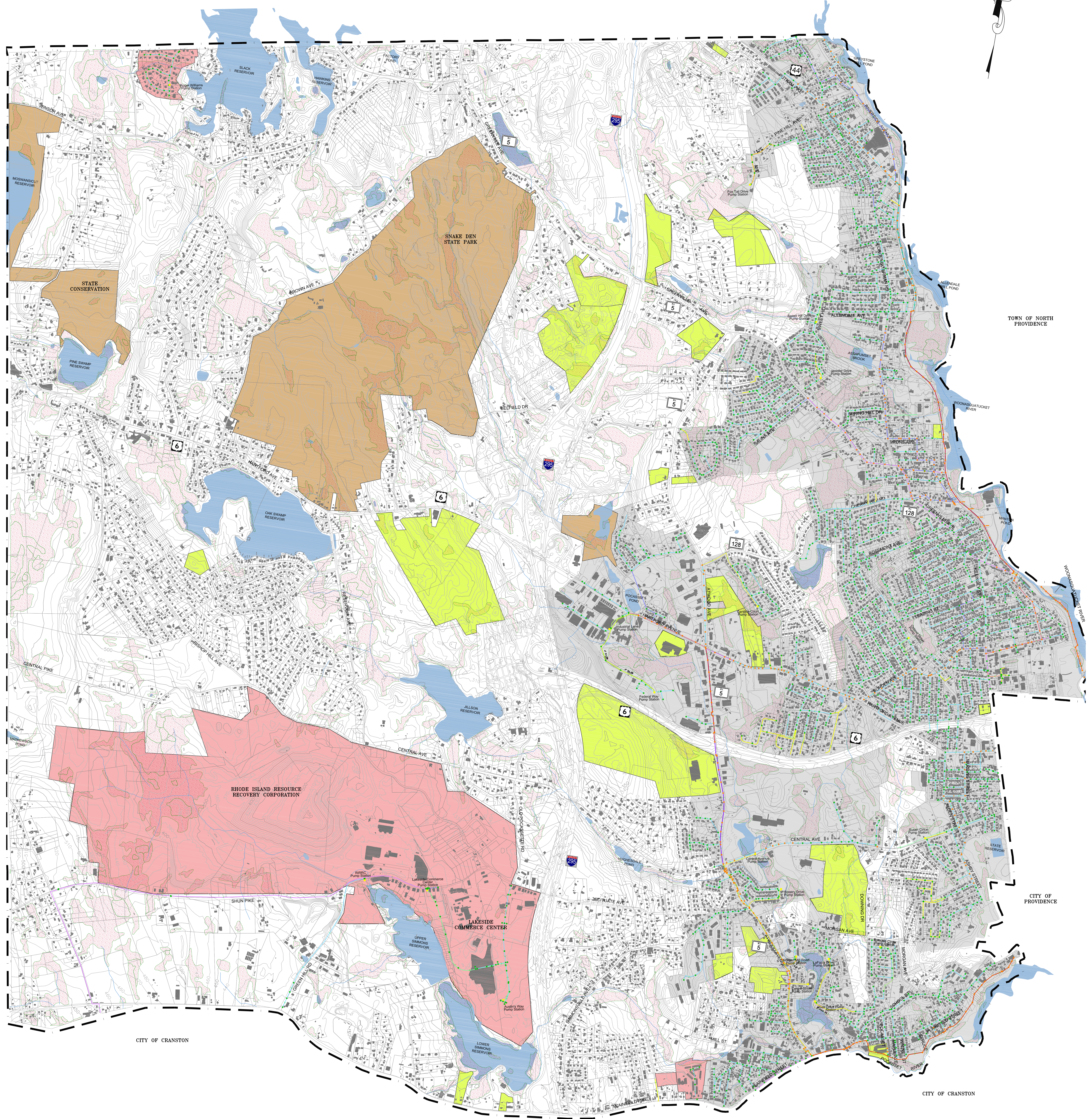
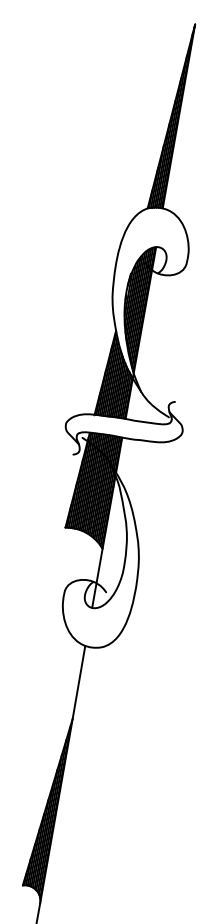


JOHNSTON SEWER EVALUATION AND FACILITY PLAN EXISTING SEWER INFRASTRUCTURE

TOWN OF SMITHFIELD

TOWN OF SMITHFIELD



TOWN OF NORTH PROVIDENCE

CITY OF PROVIDENCE

CITY OF CRANSTON

CITY OF CRANSTON

LEGEND

- | | | | |
|--|--|--|---|
| | EXISTING 3" AND 3.5" FORCE MAIN SEWER PIPE | | G.I.S. DELINEATED WETLANDS |
| | EXISTING 3" SEWER PIPE | | EXISTING SEWER SERVICED AREAS |
| | EXISTING 4" SEWER PIPE | | CONSERVATION AREAS |
| | EXISTING 6" SEWER PIPE | | SEWER SERVICE TO CITY OF CRANSTON OR SMITHFIELD |
| | EXISTING 8" SEWER PIPE | | AREAS OF DEVELOPMENT DURING THE 5-YR PLANNING HORIZON |
| | EXISTING 10" SEWER PIPE | | |
| | EXISTING 12" SEWER PIPE | | |
| | EXISTING 15" SEWER PIPE | | |
| | EXISTING 18" SEWER PIPE | | |
| | EXISTING 21" SEWER PIPE | | |
| | EXISTING 24" SEWER PIPE | | |
| | EXISTING 27" SEWER PIPE | | |
| | EXISTING 30" SEWER PIPE | | |
| | EXISTING 36" SEWER PIPE | | |
| | EXISTING 48" SEWER PIPE | | |
| | EXISTING PUMP STATION | | |
| | EXISTING NBC MANHOLE | | |
| | EXISTING JOHNSTON MANHOLE | | |



PARE CORPORATION
ENGINEERS - SCIENTISTS - PLANNERS
8 BLACKSTONE VALLEY PLACE
LINCOLN, RI 02865
401-334-4100

