

---

**APPENDIX C**

*Figures from 2007 Comprehensive Community Plan*



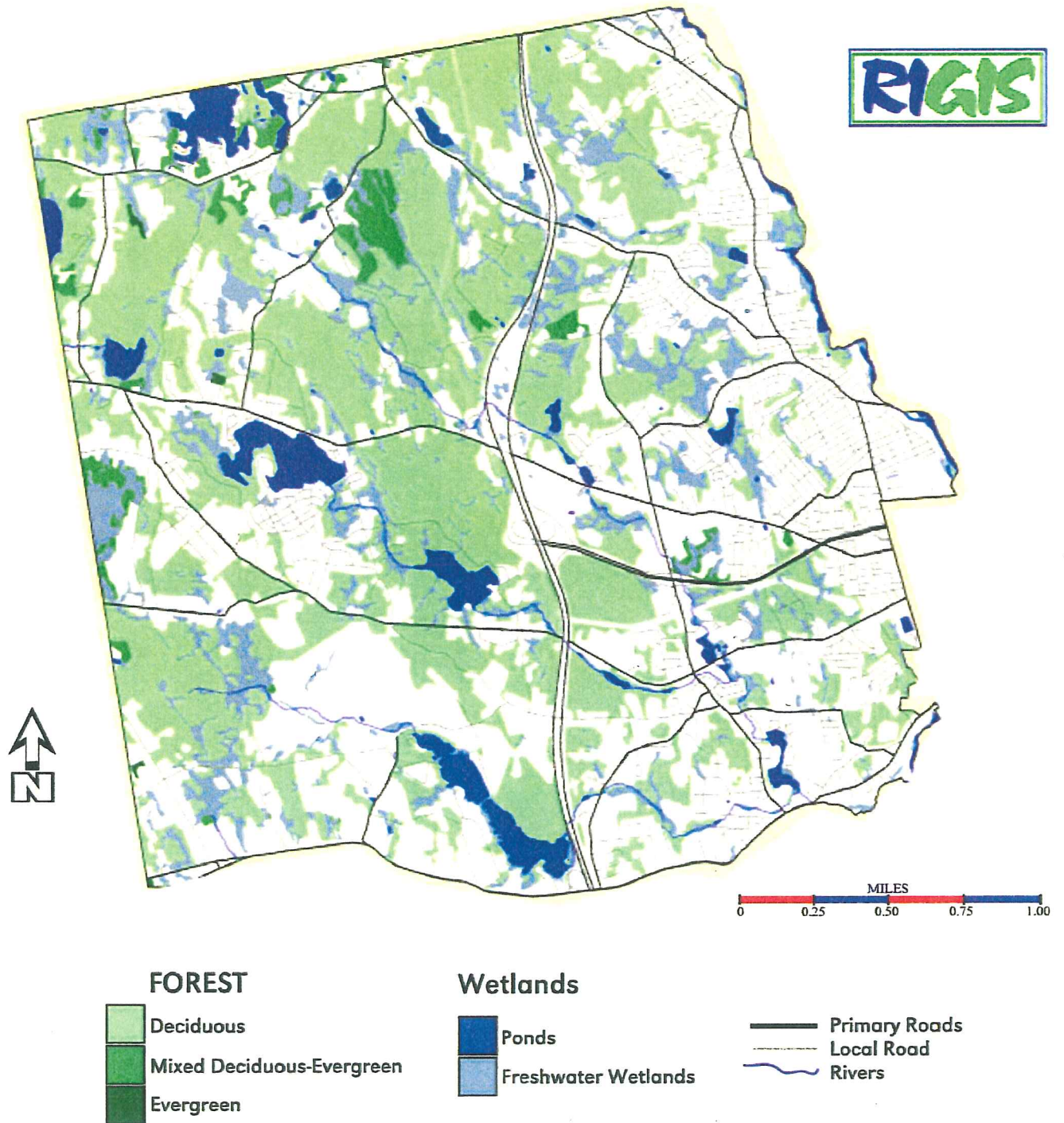
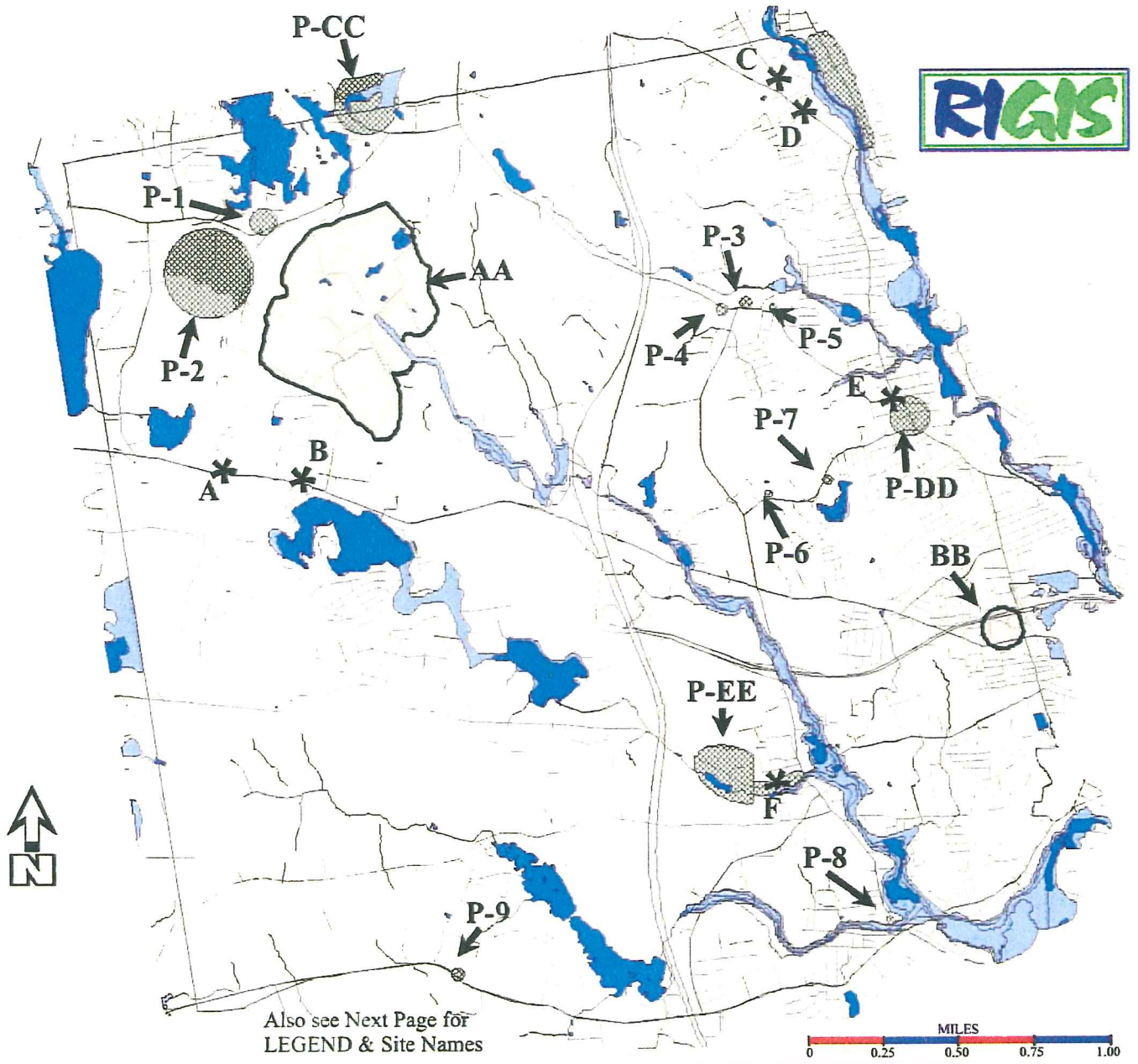


Figure 6-6. Forest and Wetland Resources, Johnston, RI










Also see Next Page for  
LEGEND & Site Names

- Historic District - Historic District listed on the National Historic Register as listed by the Rhode Island Historic Preservation Commission.
- Historic Site Candidate - Historic Site or District which is a candidate for listing on the National Historic Register by the Rhode Island Historic Preservation Commission.
- Historic Sites - Historic Site location including buildings and monuments listed on the National Historic Register as listed by the Rhode Island Historic Preservation Commission.
- Ponds and Reservoirs
- Floodplains
- Streams
- Local Roads
- Major Highways

Figure 6-10. Historic Sites, Johnston, RI



## LEGEND for Figure 6-10 (2). Historic Sites, Johnston, RI

- 
- |  |  |
|--|--|
|  Historic District - Historic District listed on the National Historic Register as listed by the Rhode Island Historic Preservation Commission.                                     |  Historic Site Candidate - Historic Site or District which is a candidate for listing on the National Historic Register by the Rhode Island Historic Preservation Commission. |
|  Historic Sites - Historic Site location including buildings and monuments listed on the National Historic Register as listed by the Rhode Island Historic Preservation Commission. |  Ponds and Reservoirs   |
|  |  Streams  |
|  |  Local Roads  |
|  |  Major Highways   |
- 

### Historic Sites listed on the National Register *Historic Site Locations including buildings and monuments.*

- A Cornell-Randall-Bailey Roadhouse  
also known as Shang Bailey Hotel  
2737 Hartford Avenue  
*Note: presently occupied by the Log Gift Shoppe*
- B Eddy Homestead  
2543 Hartford Avenue
- C Daniel Angell Homestead  
15 Dean Avenue
- D Farnum Homestead  
101 Putnam Avenue
- E Clemence-Irons Homestead  
38 George Waterman Road
- F Thomas H. Hughes Homestead  
423 Central Avenue

### Historic Districts listed on the National Register

- AA Brown Avenue Historic District  
Brown Avenue  
includes the historic Dame Farm,  
Waterman Farm, and Thomas Brown  
Farm
- BB Ochee Spring Soapstone Quarry  
767 Hartford Avenue

### Proposed Historic Site Candidates for listing on the National Register

- P-1 S. Winsor House  
Winsor Avenue
- P-2 Winsor Farm  
Winsor Avenue
- P-3 Mathewson House  
Greenville Avenue
- P-4 Mathewson House-Hotel  
Greenville Avenue
- P-5 Clemence House  
474 Greenville Avenue
- P-6 Evans House  
325 Cherry Hill Road
- P-7 Sessions-White House  
38 Cherry Hill Road
- P-8 James F. Simmons House  
Atwood Avenue
- P-9 Antioch Chapel  
Plainfield Pike

### Proposed Historic District Candidates for listing on the National Register

- P-CC Reaper Brook Industrial  
Archeological District  
Greenville Avenue
  - P-DD Greenville Avenue Historic District  
vicinity of 193 Greenville Avenue  
includes the Killey House  
at 266 Cherry Hill Road
  - P-EE Hughesdale Village Historic District  
Central Avenue
-

